

VEHICLE DESCRIPTION - VW Taigo Style Plus 1.0 TSI



First registration date
10/2023

VIN:
WVGZZZCS6RY012663

Colour:
Gray Metallic Normal gloss

Mileage (km):
52.841

Gear:
Automatic (7 Gears)

Fuel type:
Gasoline

Body type:
SUV

Number of doors:
5

Drive type:
FWD

Model year:
2021

Engine power:
81 kW

Number of seats:
5

Engine size (cc)
999

Interior:
Black Partial leatherette

VEHICLE DETAILS

Number of keys:
2

Number of license plates:
2

Registration certificate:
Part 1 & 2 present

Service documentation:
Yes

Inspection date:
09-06-2026

Last service (year/month):
2025/8

Mileage (km) at last service:
32.378

SUMMARY OF THE VEHICLE'S CONDITION

Is the car in a driveable condition:
Yes

Legal tire tread (minimum 1.6 mm):
Yes

WHEELS

 TYPE	SEASON	BRAND	POSITION	RIM	SIZE	TREAD
Fitted	Summer tires		Rear Left	Alloy rim	17"	5 mm
Fitted	Summer tires		Front Right	Alloy rim	17"	4 mm
Fitted	Summer tires		Front Left	Alloy rim	17"	4 mm
Fitted	Summer tires		Rear Right	Alloy rim	17"	5 mm

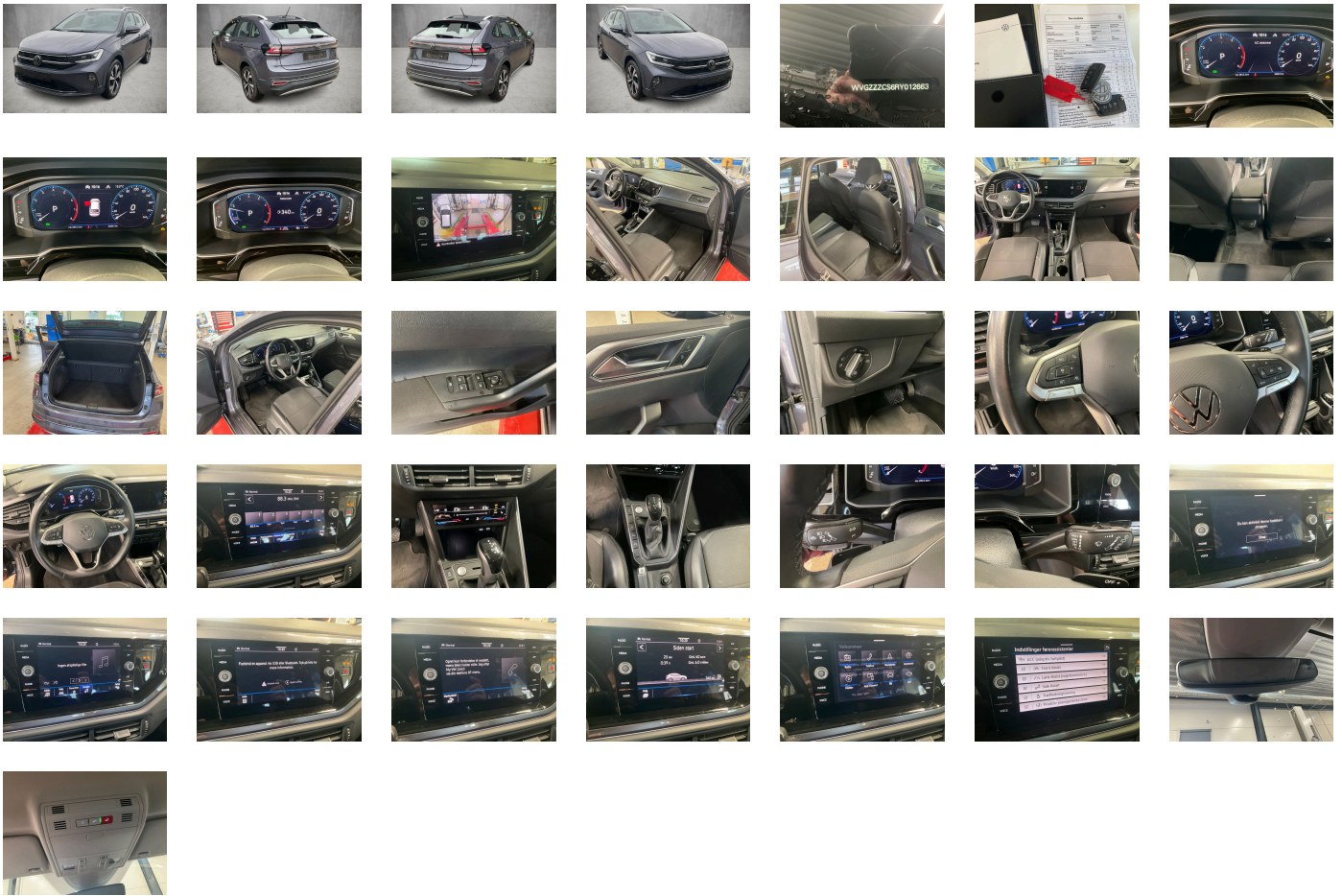
Legal tire tread (minimum 1.6 mm):

Yes

ACCESSORIES

Driving Mode Selection and electronic differential lock XDS, Park & Convenience assistance package, IQ.DRIVE assistance systems package, Lights & Vision package, Denmark: DK package f. 9AK-KA1-WF1(CS12**) -WLA/WLB(CS14**), Denmark: Convenience package forces 9S0-4I3-9ZV, Preparation for We Connect and We Connect Plus or VW Connect and VW Connect Plus, Radio "Ready 2 Discover" incl. Streaming & Internet, No special edition, Illuminated molding between headlamps, Standard wheel bolts, Vehicle class differentiation -2F0-, Rear exhaust tailpipe (standard), Hill start assist, Emission standard EU6 AP, Without trailer hitch, Driver and front passenger airbag with front passenger airbag deactivation, Activated carbon canister (Evaporative Emission Control System (EVAP)), Diversity antenna for FM reception, Exterior mirrors- power-adjustable- folding and heated- w/ front passenger exterior mirror lowering function, Exterior mirrors: aspherical on driver side-convex on front passenger side, Without alternative drive system, Front-wheel drive, App-Connect Wireless for Apple CarPlay and Android Auto, Sports equipment, Autonomous Emergency Braking Front Assist (for Adaptive Cruise Control ACC up to 210 km/h), Disc brakes in rear, Battery 320 A (49 Ah), Disc brakes in front, Body-colored exterior mirror housings, Standard battery/alternator capacity, Part set without country-specific prescriptive standard, Without tool kit and jack, Electronic Stability Control w/ driver steering recommendation- ABS- ASR- EDL- EDTC and trailer stabilization, Manual in Danish, Without heated washer nozzles, Driving Mode Selection, Chrome bezel for instrument cluster- vents- door handles- and gear shift, Operating permit- alteration, Silver-anodized roof rails, Standard roof, Rear shock absorption, Shock absorption in front, Electronic differential lock XDS, Without UN-ECE cybersecurity & software update, ECO function, Dual-clutch transmission DSG DQ200, Electronic immobilizer, Decorative inserts "Deep Iron Gray" for dashboard and front door trim panels, Without protective film for scuff plate, Park Assist with Park Distance Control, Proactive passenger protection system in combination with Front Assist, 2 USB-C ports in the front- 2 USB-C charging sockets on the center console in rear- charging capacity up to 45 W, Pamplona manufacturing sequence, Power windows, Pedestrian and cyclist monitoring, Standard pedal cluster, Automatic headlight control with LED separate daytime running light and exit and entry lighting, Fresh air intake system with combination filter, No special purpose vehicle- standard equipment, Alternator 140 A, Weight range 13 installation control only- no requirement forecast, Suspension range 39 installation control only- no requirement forecast, 3-cylinder SI engine 1.0 I, Adaptive Cruise Control ACC stop & go incl. speed limiter, Luggage compartment lighting, 7-speed automatic transmission or dual-clutch transmission DSG- note: PR family EDF, Hand brake lever handle in leather, Rear window wiper with intermittent control, Standard rear axle, Headliner, Unsplit rear bench seat- asymmetric split folding backrest, Air Care Climatronic 2 zone automatic climate control with enhanced air filter with activated carbon, IQ.LIGHT - LED matrix headlamps with LED separate daytime running light, Light unit in front footwell, Foamed dashboard, Auto-dimming interior rearview mirror, Hatchback, Multifunction camera, Standard climatic zones, Without dynamic road sign display, 3 head restraints in rear, Safety-optimized front head restraints, Initial standard fuel filling, Fuel system for fuel-injected SI engine (tropicalized), Rear view camera system, Refrigerant R1234yf, Transport protection film (minimum protection) with additional transport protection measures, Luggage compartment floor adjustable in 2 heights, Ambient lighting, Left-hand drive, 2 reading lights in front, Power steering, Non-folding front passenger seat backrest, Advanced high-beam control Dynamic Light Assist, Lumbar supports in front, Leather-wrapped multi-function steering wheel with shifting paddles, Driving on the right, 6 speakers, Height and longitudinally adjustable steering column, Dynamic headlight range control, Front center armrest- longitudinally adjustable- with storage compartment, Multi-color Digital Cockpit Pro- selection of different info profiles possible, Driver alert system, Not hot country, 3-cylinder SI engine 1.0 I TSI- 81 kW, "Standard Plus" version, Preparation for subsequent activation: Navigation feature "Discover Media" incl. Streaming & Internet, Rear fog light on one side- back-up light on both sides, Front fog lamps and cornering light, Online service- with OCU- with head unit coding- without engine immobilizer interconnection, Vehicles without special upgrade measures, Rear floor panel module- type 3, Trims for alloy wheels, 4 alloy wheels "Aberdeen"- 6.5J x 17- Black- diamond-turned surface, Radio, Non-smoker's package: Storage compartment and 12 V outlet in front, Regional code " ECE " for radio, Tire Pressure Monitoring System, Tires 205/55 R17 low rolling resistance, Tires without specification of tire brand, Tire Mobility Set: 12-volt compressor and tire sealant, Wheelbase, 3-point seat belts in front with height adjustment and seat belt pretensioners, Emergency call service-10-year contract duration as of initial delivery- condition: mob. phone network available, Curtain airbags in front and rear- side airbags in front- center airbag, Gearshift knob in leather, LED rear combination lamps, Service indicator 30 000 km or 2 years (variable), Warning signal and warning light for front and rear seat belts not fastened, 3-point seat belts for the outer rear seats, 3-point seat belt for center rear seat, Inserts of front seats and outer rear seats in fabric "Style", Front seats with height adjustment, Heated front seats, Start-stop system with regenerative braking, Single-tone horn, Control of campaigns, Illuminated vanity mirrors in sun visors, Without voice control, Lane change system Side Assist and Rear Traffic Alert, Semi-automated driving assistance Travel Assist and lane keeping system Lane Assist, Green heat-insulating glass windows on sides and in rear, Body-colored bumpers- air intake and radiator grille with chrome trims- rear bumper with chrome trim, Front stabilizer bar, Storage compartment under front seat(s), Without headlamp washer system, Rain sensor, Elimination of nameplate for engine designation on luggage compartment lid, Keyless locking and starting system Keyless Access without SAFELock, Type approval country Denmark, Carrier frequency 433.92 MHz-434.42 Mhz, Door and side trim panel, Rear overhang- medium, 4 doors, Digital radio reception DAB+, Special identification label for EC for M1 passenger vehicles, Warning triangle, Surround lighting with welcome light, Sports comfort seats in front, Mobile phone interface with inductive charging feature, LongLife Service Regime, Laminated safety glass windshield- heat-insulating, Warning lamp for washer fluid level, Without second battery, Without additional tires, Carpet mats in front and rear, Decorative trims, ISOFIX anchors for child seats on outer rear bench seats and on front passenger seat- compatible for i-Size, Without auxiliary heater/parking heater, Equipment options subset for Denmark

PICTURES



Picture viewer: <https://fm.bilsalg.dk/business/picturebrowser?t=full&guid=62ab4610-4a71-4f6c-a539-4827a8a8214e&carid=21287612>

OVERVIEW OF DAMAGES AND SHORTAGES

No damages or shortages

ELECTRICAL AND MECHANICAL CONDITION

N° LOCATION	TYPE	NOTES
1	Is the car drivable	Yes