

VEHICLE DESCRIPTION - Audi Q5 Prestige 2.0 50 TFSI e PHEV



First registration date
10/2023

VIN:
WAUZZZFY3P2174803

Colour:
Green Metallic Normal gloss

Mileage (km):
42.254

Gear:
Automatic (7 Gears)

Fuel type:
Hybrid petrol

Body type:
SUV

Number of doors:
5

Drive type:
4WD

Model year:
2020-2025

Engine power:
220 kW

Number of seats:
5

Engine size (cc)
1984

Interior:
Black Fabric

VEHICLE DETAILS

Number of keys:
2

Number of license plates:
2

Registration certificate:
Part 1 present

Service documentation:
No

Inspection date:
04-06-2026

Last service (year/month):

Mileage (km) at last service:

SUMMARY OF THE VEHICLE'S CONDITION

Is the car in a driveable condition:
Yes

Legal tire tread (minimum 1.6 mm):
Yes

WHEELS

TYPE	SEASON	BRAND	POSITION	RIM	SIZE	TREAD
Fitted	Winter tires		Front Left	Alloy rim	17"	4 mm
Fitted	Winter tires		Rear Right	Alloy rim	17"	5 mm
Fitted	Winter tires		Rear Left	Alloy rim	17"	5 mm
Fitted	Winter tires		Front Right	Alloy rim	17"	4 mm
Extra Wheel	Summer tires		Rear Left	Alloy rim	18"	5 mm
Extra Wheel	Summer tires		Front Right	Alloy rim	18"	5 mm
Extra Wheel	Summer tires		Front Left	Alloy rim	18"	5 mm
Extra Wheel	Summer tires		Rear Right	Alloy rim	18"	5 mm

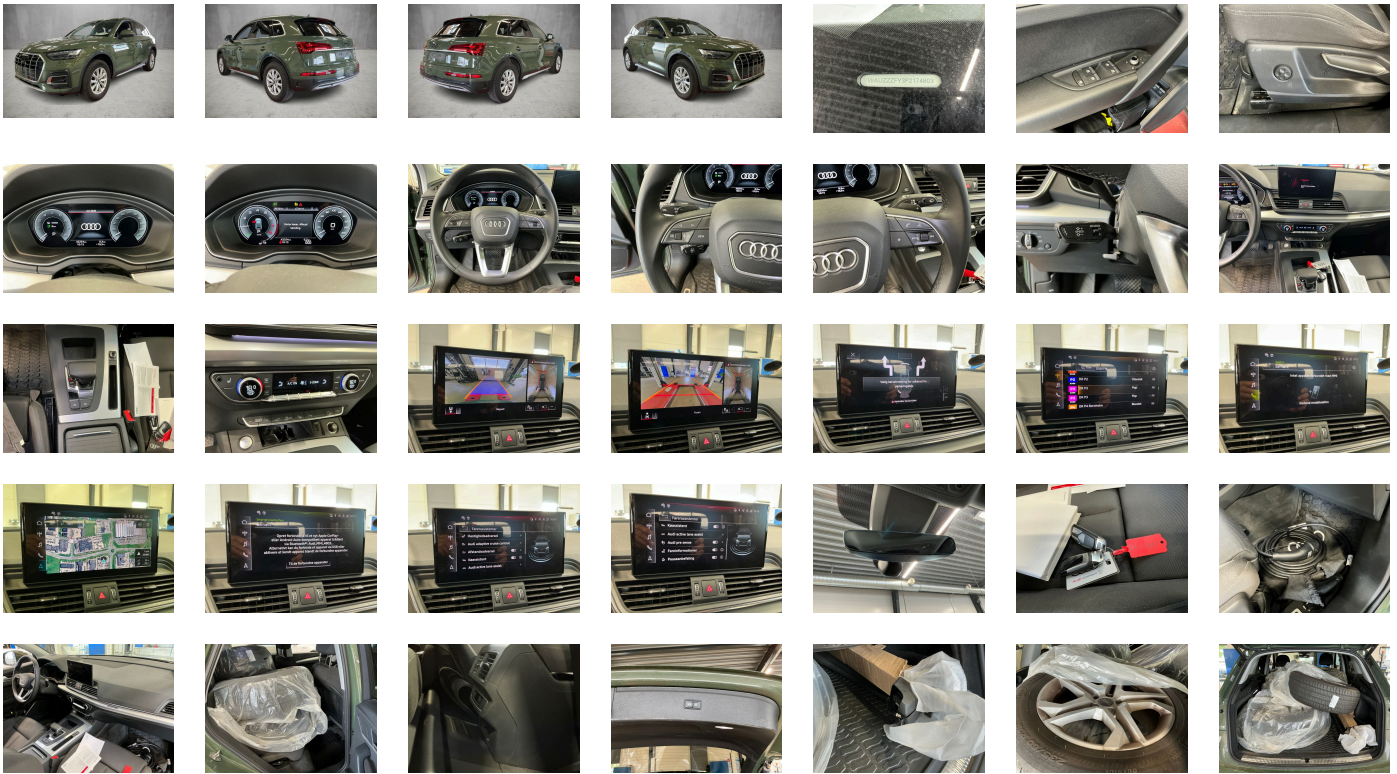
Legal tire tread (minimum 1.6 mm):

Yes

ACCESSORIES

Assist package Park, Assist package Tour, Matrix LED headlights and LED rear lights and headlight cleaning system, Equipment package for Denmark, Comfort package II for Denmark, Business package for Denmark, Internal control code, Internal control code, Internal control code, No special edition, Wheel bolts- anti-theft, Vehicle class differentiation -FY0/FYF-, Emission standard EU6 AP, Basic, Preparation for trailer hitch, Airbags- front, front passenger airbag can be deactivated, Without Storage package, Exterior mirrors- electrically adjustable- heated and folding- automatically dimming on both sides, Left exterior mirror- aspherical, Acoustic vehicle alerting system, Right exterior mirror- aspherical, Hybrid propulsion system PHEV, quattro, advanced, Audi pre sense city, Disc brakes in rear- 17-inch (ECE), Battery 380 A (68 Ah), Disk brakes- front- 17-inch (ECE), Exterior mirror housings in body color, Beverage holders, Part set without country-specific prescriptive standard, Vehicle tool kit (without vehicle jack), Manual in Danish, Audi drive select, Operating permit- alteration, Standard, Audi connect navigation & infotainment, Smartphone interface, Data module- Europe, Audi connect emergency call & service with Audi connect remote & control, Without Car2X, Standard suspension, Aluminum roof rails with roof rack detection system, Without roof insert (standard roof), Accent surfaces- Matt Black, Without decorative films/emblems, Insert for the filling up of unleaded fuel, Without step, Electronic immobilizer, Inlays- Micrometallic- Silver, Door sill trims with aluminum inlays- front, Park assist with parking system plus, Without extended safety system, Standard manufacturing sequence, Standard pedal cluster, Without fire extinguisher, Standard suspension, Extended pedestrian protection, Separate daytime running light, Preparation for functions on demand, Hold assist, Without preparation for VTS (vehicle tracking system), No special purpose vehicle- standard equipment, Without danger alarm system, Without alternator, tiptronic, Weight range 11 installation control only- no requirement forecast, Weight category front axle weight range 7, 4-cylinder SI engine 2.0 l unit 06N.E, Luggage compartment cover, Audi adaptive cruise control, Without garage door opener, S tronic (for all-wheel drive), quattro with ultra technology, Rear trim panel (ECE), Audi AG, Rear spoiler, Headlining in cloth in specific color, Rear seat bench plus, 3-zone deluxe automatic air conditioning, Matrix LED headlights with dynamic light sequencing and dynamic turn signal, Without head-up display, Electric motor (hybrid electric vehicle)- total system output 220 kW- unit 0ED.D, Instrument cluster- km/h speedometer, Interior mirror- automatically dimming- frameless, Box, With multifunction camera, Luggage compartment mat, Fuel tank, Manual child safety lock, Standard climatic zones, Camera-based traffic sign recognition, Without seat ventilation/massage seat, Without antenna amplifier, Head restraints- front, Increase in initial standard fuel filling, Category 0, Fuel system for SI engine with direct injection (FSI), Without special body measures, Without child seat anchora in front (ISOFIX), Surround view cameras, Refrigerant R1234yf, Without front license plate carrier, Adhesive film, Loading floor, Ambient Lighting package plus, Without wall mount, Country group A, Charging socket AC type 2, Left-hand drive, Electromechanical power steering, Matrix LED headlights with dynamic light sequencing and dynamic turn signal, e-tron charging system compact (AC) with domestic connector type K (Denmark), Industrial connector CEE 16A- 230V- long and straight- for the e-tron charging system, Charging cable for public charging- mode 3- 11 kW (AC), Loading sill protector- stainless steel, 4-way lumbar support for the front seats, Leather steering wheel- 3-spoke with multifunction plus, Driving on the right, Audi sound system, Axial and vertical adjustable steering column, Without leather, Comfort center armrest- front, Basic equipment variant, Audi virtual cockpit, Not hot country, SI engine, 4-cyl. SI engine 2.0 l/195 kW- hybrid- turbo FSI- system output 220 kW base engine is T4H, MMI navigation plus with MMI touch, Vehicles with special upgrade measures, Production wheels, Standard-production quality, Wheels- 5-twin-spoke dynamic- 8.0J x 18 235/60 R18 tires, Non-smoker version, Regional code " ECE " for radio, Tire pressure loss indicator, Tires 235/60 R18 103V super-low rolling resistance, Tires without specification of tire brand, Tire repair kit, Side airbags- front and head airbag system, Gearshift/selector lever handle, No self-collection, Labels in English and German, LED rear lights with dynamic light sequencing and dynamic turn signal, Without AdBlue tank, Clear glass, Luggage compartment lid- electrically opening and closing, Service indicator 30 000 km or 2 years (variable), Reinforced bumpers, Audi connect key, Seat belt reminder, Impressum cloth, Front seats- manually adjustable, Seat heating- front, With special labels safety certificates for Denmark, Recuperation, Two-tone horn, Sun visors- front, Without lane change assist, Audi active lane assist, Rear and side windows with heat-insulating glazing, Without roll-up sunshade, Control of series production, Headlight cleaning system, Passenger car design, Convenience key- without Safelock, Without integrated toll system, Type approval country Denmark, Carrier frequency 433.92 MHz-434.42 Mhz, Partition net, Transit coating (type 2), Digital Audio Broadcasting, Installation parts for four-cylinder engine, Without additional front underbody guard, Special identification label (EU), Model name as per new output designation, First-aid kit with warning triangle and high-visibility vests, Auxiliary air conditioning, Sport seats- front, Audi phone box light, Without additional warning lights, Floor mats- front and rear, Without heat accumulator/auxiliary heater, Windshield with heat-reflecting glass and acoustic glass, Without additional tires, Gloss package, ISOFIX child seat mounting and top tether for the outer rear seats, Without ignition/starter switch locking system- without steering lock, Standard electric, Without auxiliary heater/parking heater, Equipment options subset for Denmark

PICTURES



Picture viewer: <https://fm.bilsalg.dk/business/picturebrowser?t=full&guid=6fa38816-630f-41d7-9d39-03c05f0c6026&carid=21271867>

OVERVIEW OF DAMAGES AND SHORTAGES

No damages or shortages

ELECTRICAL AND MECHANICAL CONDITION

N° LOCATION	TYPE	NOTES
1	Is the car drivable	Yes