

VEHICLE DESCRIPTION - Seat Arona FR 1.0 TSI



First registration date
9/2023

VIN:
VSSZZKJXRR020500

Colour:
Red Normal gloss

Mileage (km):
27.514

Gear:
Automatic (7 Gears)

Fuel type:
Gasoline

Body type:
SUV

Number of doors:
5

Drive type:
FWD

Model year:
2021-2025

Engine power:
81 kW

Number of seats:
5

Engine size (cc)
999

Interior:

VEHICLE DETAILS

Number of keys:
2

Number of license plates:
2

Registration certificate:
Part 1 present

Service documentation:
Yes

Inspection date:
23-06-2026

Last service (year/month):
2025/9

Mileage (km) at last service:
18.009

SUMMARY OF THE VEHICLE'S CONDITION

Is the car in a driveable condition:
Yes

Legal tire tread (minimum 1.6 mm):
Yes

WHEELS

| TYPE | SEASON | BRAND | POSITION | RIM | SIZE | TREAD |
|--------|----------------|-------|-------------|-----------|------|-------|
| Fitted | All year tires | | Front Left | Alloy rim | 17" | 5 mm |
| Fitted | All year tires | | Rear Right | Alloy rim | 17" | 5 mm |
| Fitted | All year tires | | Rear Left | Alloy rim | 17" | 5 mm |
| Fitted | All year tires | | Front Right | Alloy rim | 17" | 5 mm |

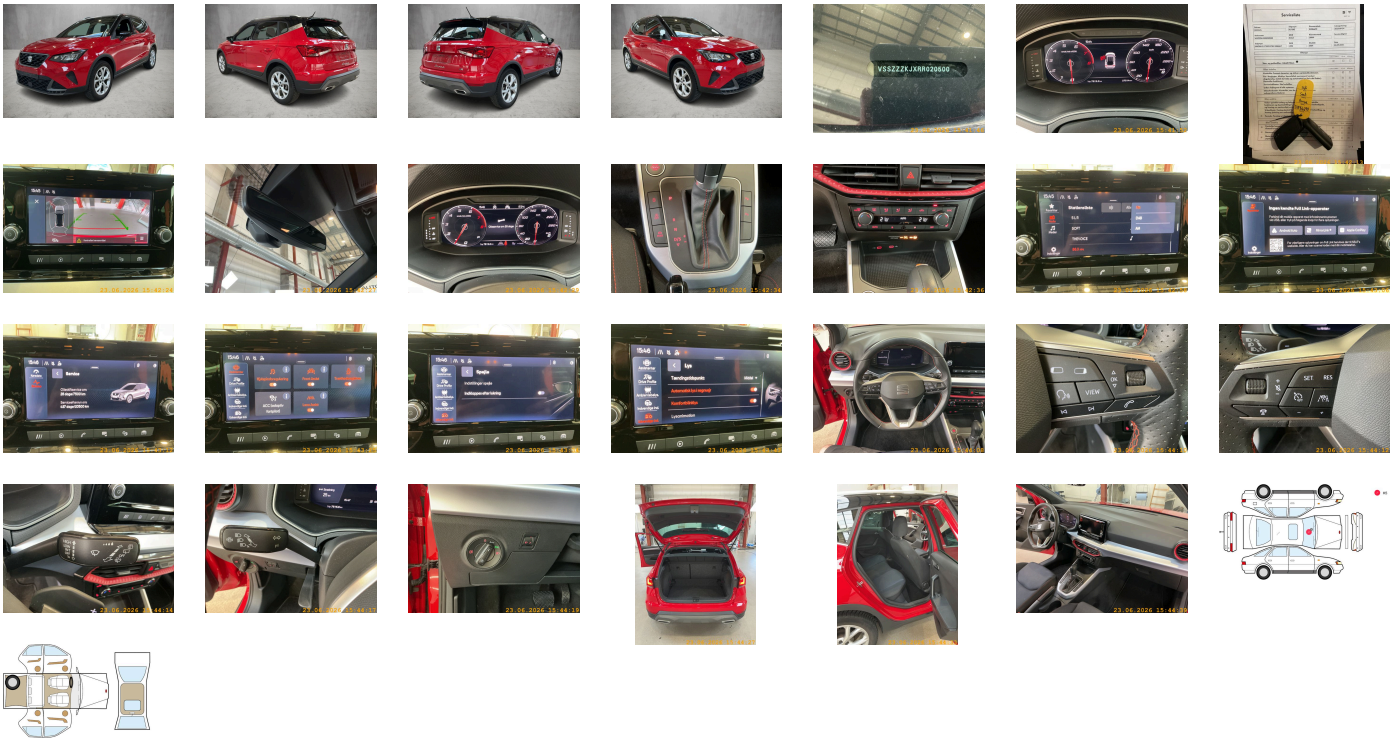
Legal tire tread (minimum 1.6 mm):

Yes

ACCESSORIES

Vision Plus package: Park Assist with rear view camera system, Safe & Driving package XL (in combination with "Media System"), Digital Cockpit, Keyless locking and starting system Keyless Access without SAFELock, Reduced price package, No special edition, Standard wheel bolts, Vehicle class differentiation -6F0-, Rear exhaust tailpipe (standard), Hill start assist, Emission standard EU6 AP, Without trailer hitch, Airbag on driver and front passenger side- without knee airbag- with front passenger airbag deactivation, Activated carbon canister (Evaporative Emission Control System (EVAP)), Antenna for AM/FM reception, Without applications, Exterior mirrors- power-folding/adjustment- heated, Left exterior mirror- convex, Right exterior mirror- convex, Without alternative drive system, Front-wheel drive, Wired & Wireless App-Connect, Top sports equipment, Forward collision warning incl. autonomous emergency braking- for adaptive cruise control "high", Disc brakes in rear (Geomet D), Battery 320 A (49 Ah), Disc brakes in front (Geomet D), Exterior mirror housings painted, Without special color trim, Part set without country-specific prescriptive standard, Tool kit, Electronic stability control (ESC), Manual in Danish, Without heated washer nozzles, Without CD/DVD for navigation, Without CD changer/CD player, Driving profile selection and conventional shock absorber, Chrome package, Operating permit- alteration, Bright roof rails, Without roof insert (standard roof), Rear shock absorption, Emblems, Shock absorption in front, Electronic differential lock XDS- dynamic traction support, Without UN-ECE cybersecurity & software update, ECO function, Installation differentiation for transmission DQ200 -- vehicle components --, Electronic immobilizer, Decorative inserts, Park assist, Without extended safety system, External- USB type C- only data socket(s), Standard manufacturing sequence, Power windows with comfort operation and circuit breaker, Without fire extinguisher, Extended and proactive pedestrian and cyclist protection, Standard pedal cluster, Vent, Separate daytime running light with automatic headlight control and manual Coming and Leaving Home feature, Fresh air intake system with combination filter, Antifreeze up to -25 degree Celsius tolerance up to -30 degree C, No special purpose vehicle- standard equipment, Special interior noise suppression, Alternator 140 A, Weight range 9 installation control only- no requirement forecast, Suspension range 31 installation control only- no requirement forecast, 3-cylinder SI engine 1.0 l unit 05CA, Without luggage nets/pockets on backrests, Luggage compartment cover- folding, Adaptive cruise control (with "follow-to-stop") and speed limiter, Luggage compartment trim (design 1), 7-speed automatic transmission "A7", Hand brake lever handle in leather, Rear spoiler, Rear window wiper and washer system with intermittent control, Standard rear axle, Unsplit molded headliner, Unsplit rear seat bench- split folding backrest, Climatronic with impact pressure control- CFC-free, LED headlamps, Without customized installation, Interior light in footwell, Instrument cluster- km/h speedometer, Standard dashboard, Breakaway interior rearview mirror- auto-dimming, MPV, With multifunction camera, Without mounting fixture in luggage compartment, Standard climatic zones, Without dynamic road sign display, Three rear head restraints, Front head restraints, Initial standard fuel filling, Fuel system for fuel-injected SI engine (tropicalized), Without special body measures, With rear view camera system (type 1), Refrigerant R1234yf, LED license plate lighting, Without surface protection- with additional transport protection measures, Special paint coating, Plane luggage/load compartment floor in rear, Interior ambient lighting- type 1, Left-hand drive, 2 reading lights in front, Power steering, Without backrest release for front seats, High-beam control, Without lumbar support in seat backrests, Leather-wrapped multi-function sports steering wheel with tiptronic, Driving on the right, 6 speakers (passive), Axial and vertical adjustable steering column, Standard air cleaner, Headlight range control, Without center armrest in front, Variant, Multi-function display/trip computer active info display "Entry", Driver alert system, Not hot country, 3-cylinder gasoline engine 1.0 l/81 kW TSI base engine: Tj4/TC5- "TSI"- "eTSI", "Standard Plus" version, Without navigation device, Rear fog lamp, Without front fog lamps, Online service- with OCU- without head unit coding- without engine immobilizer interconnection, Vehicles with special upgrade measures, Rear floor panel module- type 1, Trims for alloy wheels, Alloy wheels 6.5J x 17, Entry-level infotainment system Radio 2 (MIB3) 8.25-inch, Non-smoker's package, Regional code " ECE " for radio, Tire pressure monitoring system, Tires 205/55 R17 91V super-low rolling resistance- generation 2, Tires without specification of tire brand, Breakdown kit, Wheelbase, 3-point seat belts in front- with belt clamping device- without height adjustment, Pan-European emergency call service, Side airbag in front with curtain airbag, Gearshift knob/handle in leather, In-plant control of self-collection, LED rear combination lamp, Service indicator 30 000 km or 2 years (variable), Visual and acoustic seat belt reminder- electric contact in front and rear, 3-point seat belts- outer rear with ECE label, 3-point seat belt for center rear seat, Seat trim covers in fabric, Manual height adjustment for front seats, Seat heater for front seats separately controlled, Start-stop system with regenerative braking, Single-tone horn, Special price, Sun visors with mirror- airbag label on front passenger sun visor, Without voice control, Without lane change assist, Lane keeping system plus traffic jam assist, Side windows in heat-insulating glass- from B-pillar and rear window dark tinted, Protective side molding, Without special specifications, Comfort bumper- with chrome molding, Front stabilizer bar, Control of series production, Without drawers under front seats, Standard design, Without headlamp washer system, Windshield wiper intermittent control with light/rain sensor, Nameplate set, Central locking system Keyless Entry without SAFELock, Type approval country Denmark, Carrier frequency 433.92 MHz-434.42 Mhz, Door and side trim panel, 4 doors, Digital radio reception, Without additional front underbody guard, Special identification label for EC for M1 passenger vehicles, Type sign and company logo, Without delivery equipment, Rear overhang- short, Without first aid kit and warning triangle, Standard seats in front, Mobile phone interface, LongLife Service Regime, Without heat accumulator/auxiliary heater, Heat-reflecting windshield, Without washer fluid level indicator, Without second battery, Without additional tires, Without floor mats, Bright decorative trims, Additional body cover on wheel arch and side sill, Child seat anchors for child seat system ISOFIX, Without auxiliary heater/parking heater, Equipment options subset for Denmark

PICTURES



Picture viewer: <https://fm.bilsalg.dk/business/picturebrowser?t=full&guid=0f00fb40-7acf-4975-835a-1ad7d818646c&carid=21111595>

OVERVIEW OF DAMAGES AND SHORTAGES

| N° | LOCATION | TYPE | SEVERITY | INSURANCE | NOTES | DAMAGE GROUP |
|----|------------------|-------------|----------|-----------|------------------|--------------|
| 1 | Front Windscreen | Stone Chips | C5 | | Reporting needed | |



Severity explanation:

C0 = No damage / C1 = Simple preparation / C2 = Minor preparation needed / C3 = Can be smart repaired / C4 = Repair/spray paint / C5 = Need replacement

ELECTRICAL AND MECHANICAL CONDITION

| N° | LOCATION | TYPE | NOTES |
|----|---------------------|------|-------|
| 1 | Is the car drivable | Yes | |