

**VEHICLE DESCRIPTION - VW Golf Style 1.5 eTSI MHEV**



**First registration date:**  
9/2023

**VIN:**  
WWWZZZCD6RW110738

**Colour:**  
null Metallic Normal gloss

**Mileage (km):**  
24.826

**Gear:**  
Automatic (7 Gears)

**Fuel type:**  
Hybrid petrol

**Body type:**  
Hatchback

**Number of doors:**  
5

**Drive type:**  
FWD

**Model year:**  
2020-2024

**Engine power:**  
110 kW

**Number of seats:**  
5

**Engine size (cc):**  
1498

**Interior:**  
Dark grey Fabric

**VEHICLE DETAILS**

**Number of keys:**  
2

**Number of license plates:**  
2

**Registration certificate:**  
Part 1 & 2 present

**Service documentation:**  
Yes

**Inspection date:**  
26-05-2026

**Last service (year/month):**  
2024/10


**Mileage (km) at last service:**  
9.720

**SUMMARY OF THE VEHICLE'S CONDITION**

**Is the car in a driveable condition:**  
Yes

**Legal tire tread (minimum 1.6 mm):**  
Yes

## WHEELS

 TYPE	SEASON	BRAND	POSITION	RIM	SIZE	TREAD
Fitted	Summer tires		Front Left	Alloy rim	17"	5 mm
Fitted	Summer tires		Rear Right	Alloy rim	17"	6 mm
Fitted	Summer tires		Rear Left	Alloy rim	17"	6 mm
Fitted	Summer tires		Front Right	Alloy rim	17"	5 mm

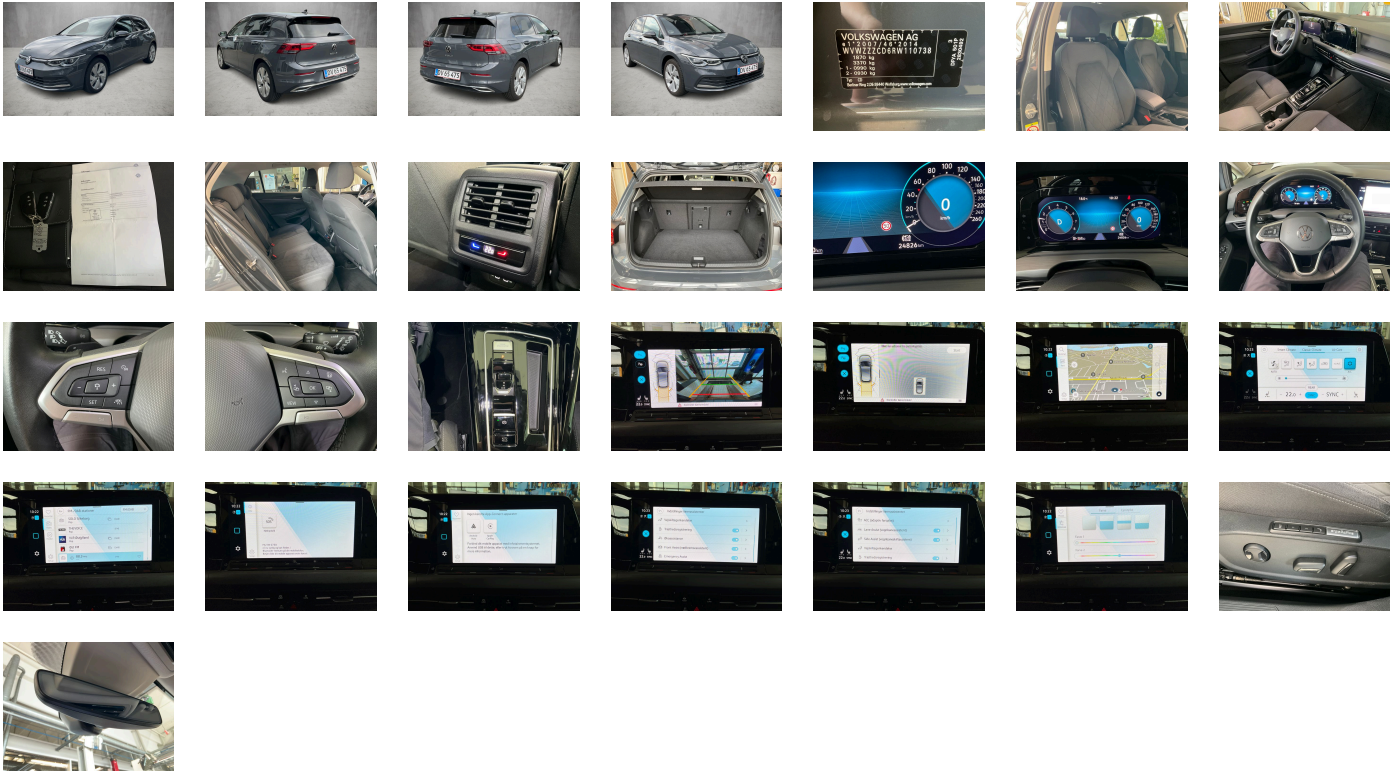
**Legal tire tread (minimum 1.6 mm):**

Yes

## ACCESSORIES




Driving on the right, Sports equipment, Part set without country-specific prescriptive standard, Type approval country Denmark, 4 alloy wheels "Nottingham" 7.5J x 17, Operating permit- alteration, 4-cylinder SI engine 1.5 l eTSI- 110 kW, Online service- with OCU- with head unit coding- without engine immobilizer interconnection, Driver alert system, Regional code " ECE " for radio, Without charging cable, No special edition, Standard paint coating, Basic equipment variant, No special purpose vehicle- standard equipment, Electronic engine sound, Vehicles without special upgrade measures, Without alcohol interlock, Car2X, Shock absorption in front, 7-speed automatic transmission or dual-clutch transmission DSG- note: PR family EDF, Tires 225/45 R17, Standard curb weight range, Battery 380 A (59 Ah) EFB+, Rear view camera system, Air Care Climatronic 3 zone automatic climate control w/ allergen filter- enhanced air filter a. controls in rear, Refrigerant R1234yf, Without head-up display, Hatchback, Without speed limiter, Left-hand drive, Suspension range 05 installation control only- no requirement forecast, Without UN-ECE cybersecurity & software update, Standard battery/alternator capacity, Emergency call service-10-year contract duration as of initial delivery- condition: mob. phone network available, Inserts of front seats and outer rear seats in ArtVelours microfleece, ergoActive seat with 14-way adjustment and memory feature on driver side, IQ.DRIVE assistance systems package incl. semi-automated vehicle assistance in a medical emergency Emergency Assist, Lights & Vision package incl. high-beam control Light Assist, LongLife Service Regime, Without voice control, Service indicator 30 000 km or 2 years (variable), Chrome elements on power mirror and window regulator switches- chrome trims on the vents, Multifunction camera, 30-color ambient lighting, Without dynamic road sign display, Digital radio reception DAB+, Sports comfort seats in front, Radio "Ready 2 Discover" incl. "Streaming & Internet", 4-cylinder SI engine 1.5 l, Illuminated molding between headlamps and illuminated door handle recesses, Without hill start assist/hill descent control/comfort driving assist, Electromechanical parking brake with Auto Hold function, Standard rear seat release, Instrument cluster with electronic speedometer- odometer and trip odometer- tachometer, 2 USB-C ports in the front- 2 USB-C charging sockets on the center console in rear- charging capacity up to 45 W, Standard pedal cluster, Extended pedestrian protection, Winter package, VE: rear view camera system- Keyless Access- Park Assist, Preparation for We Connect and We Connect Plus or VW Connect and VW Connect Plus, Front stabilizer bar, Rear stabilizer bar, Wheelbase, Dual-clutch transmission DSG DQ200, Standard manufacturing sequence, Without decals and emblems, Hybrid drive system mHEV, Elimination of nameplate for engine designation on luggage compartment lid, Four-link suspension, Rear exhaust tailpipe (standard), Carpet mats in front and rear, Manual in Danish, Weight range 3 installation control only- no requirement forecast, Standard climatic zones, Electronic Stability Control and electromechanical brake booster, Fuel system for fuel-injected SI engine, Without trailer hitch, Special identification label for EC for M1 passenger vehicles, Activated carbon canister (Evaporative Emission Control System (EVAP)), Tire Mobility Set: 12-volt compressor and tire sealant, Rear shock absorption- basic version 1, Surround lighting with welcome light, Disc brakes in rear, Electromechanical speed-sensitive power steering, Standard wheel bolts, ergoActive driver seat with power adjustment- memory feature and adjustable thigh support, Without additional front underbody guard, Tool kit, Warning triangle, Front-wheel drive, Electronic differential lock XDS, Disc brakes in front, Initial standard fuel filling, Vehicle class differentiation -5H0-, Leather multi-function steering wheel- heated- with shift paddles, Without locking and starting systems, Without Adaptive Chassis Control, Body-colored bumpers- air intake with chrome fin, Without additional tires, Without electric motor (hybrid), ISOFIX anchors for child seats on outer rear bench seats and on front passenger seat- compatible for i-Size, Without partition, Standard roof, Non-folding front passenger seat backrest, Door and side trim panel, Unsplit rear bench seat- asymmetric split folding backrest- with center armrest, 3-point seat belts in front with height adjustment and seat belt pretensioners, Without roof rails, 3 head restraints in rear, 3-point seat belts for the outer rear seats, Heated front seats, Emission standard EU6 AP, Without seat ventilation/massage seat, Tailgate/trunk lid unlocking from outside, Laminated safety glass windshield- heat- and sound-insulating, Oncoming vehicle braking when turning and swerve support, Green heat-insulating glass windows on sides and in rear, Keyless locking and starting system Keyless Access without SAFELOCK, Auto-dimming interior rearview mirror, Rear floor panel module- type 1, Driver and front passenger airbag with front passenger airbag deactivation, Chrome trim on the side window bottoms, Without special body measures, UWB-capable country and carrier frequency- 433.92 to 434.42 MHz, Exterior mirrors: aspherical on driver side-convex on front passenger side, Transport protection film (minimum protection) with additional transport protection measures, Decorative inserts "New Brushed Dark Metal" for dashboard and door trim panels in front, Illuminated vanity mirrors in sun visors, Safety-optimized front head restraints, Without fire extinguisher, Curtain airbags in front and rear- side airbags in front- center airbag, Front center armrest- height- and longitudinally adjustable, Body-colored exterior mirror housings and door handles, Travel Assist- Lane Assist and Emergency Assist, Headliner, Gearshift knob/handle in plastic, LED light unit in front footwell- selectable light color, Ext. mirrors- power-adjustable- folding a. heated- w/ memory feature a. front passenger ext. mirror lowering function, Electronic restriction of top speed, Electronic immobilizer, 12-V outlet in luggage compartment, Without heat accumulator/auxiliary heater, Multi-color Digital Cockpit Pro- selection of different info profiles possible, Tire Pressure Monitoring System, Start-stop system with regenerative braking, Park Assist with Park Distance Control, Preparation for subsequent activation: Navigation feature "Discover Media" incl. Streaming & Internet, Standard engine starter, Proactive passenger protection system in combination with Front Assist and Side Assist, Without mode 3 charging cable, Lane change system Side Assist- Rear Traffic Alert and exit warning system, Radio, Without second battery, High-beam control Light Assist, LED Plus headlamps, Lumbar supports in front- power- adjustable on driver side- massage feature on driver side, Auto. Emergency Braking Front Assist with Pedestrian and Cyclist Monitoring, Rain sensor, Dynamic headlight range control, 6+1 speakers, 2 LED reading lights in front and 2 in rear, Rear fog light on one side- back-up light on both sides, Adaptive Cruise Control ACC stop & go incl. speed limiter, LED rear combination lamps, Cornering light and poor weather light, Without headlamp washer system- with washer fluid level indicator, Two-tone horn, Diversity antenna for FM reception, Not hot country, Without preparation for two-way radio installation, Without preparation for rotating beacon/siren combination, Belt-driven integrated starter alternator 48 V 110 - 250 A, Automatic headlight control with LED separate daytime running light and entry and exit lighting, Non-smoker's package: Storage compartment and 12-V outlet in front, Without auxiliary heater/parking heater, Warning signal and warning light for front and rear seat belts not fastened, Automatically-heated washer nozzles in front, App-Connect Wireless for Apple CarPlay and Android Auto, Mobile phone interface with inductive charging feature, Operating voltage 12 V, Equipment options subset for Denmark

**PICTURES**



**Picture viewer:** <https://fm.bilsalg.dk/business/picturebrowser?t=full&guid=ce87d313-0b49-47e4-83bd-b3aca131833b&carid=21092665>

## OVERVIEW OF DAMAGES AND SHORTAGES

N°	LOCATION	TYPE	SEVERITY	INSURANCE	NOTES	DAMAGE GROUP
1	L. Roof Pillar, C-Pillar	Scratch	C3		Indvendig	
						
2	Rear Bumper	Scratch	C3			
						
3	L. Rear Quarter Panel	Scratch	C3			
						

Severity explanation:

C0 = No damage / C1 = Simple preparation / C2 = Minor preparation needed / C3 = Can be smart repaired / C4 = Repair/spray paint / C5 = Need replacement

## ELECTRICAL AND MECHANICAL CONDITION

N°	LOCATION	TYPE	NOTES
1	Is the car drivable	Yes	