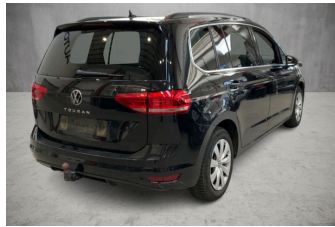


**VEHICLE DESCRIPTION - VW Touran Comfortline 1.5 TSI**



**First registration date:**  
6/2023

**VIN:**  
WVGZZZ1T8PW026391

**Colour:**  
Black Metallic Normal gloss

**Mileage (km):**  
69.184

**Gear:**  
Automatic (7 Gears)

**Fuel type:**  
Gasoline

**Body type:**  
MPV

**Number of doors:**  
5

**Drive type:**  
FWD

**Model year:**  
2015

**Engine power:**  
110 kW

**Number of seats:**  
7

**Engine size (cc):**  
1498

**Interior:**

**VEHICLE DETAILS**

**Number of keys:**  
2

**Number of license plates:**  
2

**Registration certificate:**  
Part 1 & 2 present

**Service documentation:**  
No

**Inspection date:**  
27-05-2026

**Last service (year/month):**

**Mileage (km) at last service:**

**SUMMARY OF THE VEHICLE'S CONDITION**

**Is the car in a driveable condition:**  
Yes

**Legal tire tread (minimum 1.6 mm):**  
Yes

## WHEELS

 TYPE	SEASON	BRAND	POSITION	RIM	SIZE	TREAD
Fitted	Winter tires		Front Left	Steel rim	16"	5 mm
Fitted	Winter tires		Front Right	Steel rim	16"	5 mm
Fitted	Winter tires		Rear Left	Steel rim	16"	5 mm
Fitted	Winter tires		Rear Right	Steel rim	16"	5 mm
Extra Wheel	Summer tires		Front Left	Steel rim	16"	4 mm
Extra Wheel	Summer tires		Front Right	Steel rim	16"	4 mm
Extra Wheel	Summer tires		Rear Left	Steel rim	16"	4 mm
Extra Wheel	Summer tires		Rear Right	Steel rim	16"	4 mm

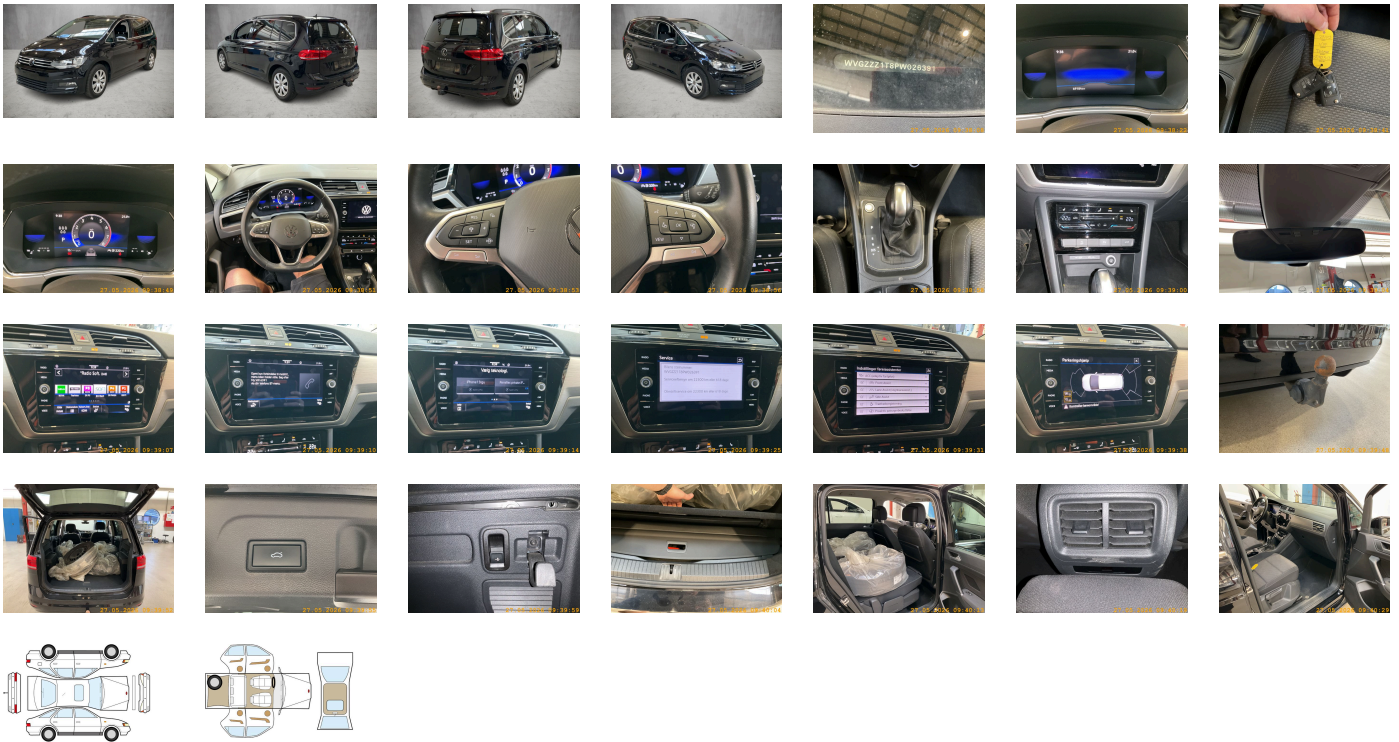
**Legal tire tread (minimum 1.6 mm):**

Yes

## ACCESSORIES

Driving on the right, Comfort equipment, Part set without country-specific prescriptive standard, Type approval country Denmark, Steel wheels 6.5J x 16, Operating permit- alteration, 4-cylinder SI engine 1.5 l TSI- 110 kW, Without ECO function, Online service- with OCU- with head unit coding- without engine immobilizer interconnection, Driver alert system, Regional code " ECE " for radio, No special edition, Standard paint coating, No special purpose vehicle- standard equipment, Vehicles without special upgrade measures, Shock absorption in front, 7-speed automatic transmission or dual-clutch transmission DSG- note: PR family EDF, Tires 205/60 R16 low rolling resistance, Battery 420 A (70 Ah), Without camera systems/accident sensors, Air Care Climatronic 3 zone automatic climate control w/ allergen filter- enhanced air filter a. controls in rear, Refrigerant R1234yf, LED license plate lighting, Without head-up display, MPV, Left-hand drive, Suspension range 07 installation control only- no requirement forecast, Standard battery/alternator capacity, eCall Emergency System, 4-cylinder SI engine 1.5 l unit 05E.D, Inserts in fabric "Lasano", Adaptive Cruise Control ACC stop & go up to 210 km/h and Automatic Emergency Braking Front Assist, 2 single seats in 3rd row of seats retractable into cargo area, Lane keeping system Lane Assist, Without child seat, LongLife Service Regime, Without voice control, Service indicator 30 000 km or 2 years (variable), Front vent and rotary light switch with chrome bezel, Multifunction camera, Drawers under front seats, Without add. lights (interior lighting), Without dynamic road sign display, Digital radio reception DAB+, Comfort seats in front, Radio "Ready 2 Discover" incl. "Streaming & Internet", Electromechanical parking brake with Auto Hold function, Instrument cluster with electronic speedometer- odometer and trip odometer- tachometer, 2 USB-C ports in the front- charging capacity up to 45 W, Standard pedal cluster, Pedestrian and cyclist monitoring as well as re-active hood, Tires without specification of tire brand, Winter package, Denmark: DK Package forces TL: PM4-8T6-7X2 CL: PM4-7X2-4ZB, Preparation for We Connect and We Connect Plus, Front stabilizer bar, Rear stabilizer bar, Wheelbase, Dual-clutch transmission DSG DQ200, Without decals and emblems, Without alternative drive system, Fuel tank, Elimination of nameplate for engine designation on luggage compartment lid, Rear exhaust tailpipe (standard), Without electronic steering column lock, Carpet mats in front and rear, Manual in Danish, Weight range 9 installation control only- no requirement forecast, Standard climatic zones, Electronic Stability Control w/ driver steering recommendation- ABS- ASR- EDL- EDTC and trailer stabilization, Fuel system for fuel-injected SI engine, Special identification label for EC for M1 passenger vehicles, Activated carbon canister (Evaporative Emission Control System (EVAP)), Tire Mobility Set: 12-volt compressor and tire sealant, Rear shock absorption- basic version 1, Folding trailer hitch- with electric release, Wheel trims, Electromechanical speed-sensitive power steering, Standard wheel bolts, Without additional front underbody guard, Tool kit, Warning triangle, Folding tables on the back of each front seat- articulated, Glove compartment with cooling system, Front-wheel drive, Disc brakes in front, Initial standard fuel filling, Without delivery equipment, Disc brakes in rear, Leather-wrapped multi-function steering wheel- heated, Without Adaptive Chassis Control, Body-colored bumpers, Allergen filter, Without additional tires, ISOFIX anchorage points (mounting fixture for child seats on rear seats), Without partition, Decorative inserts "Piano Black" for center console, Without roof insert (standard roof), Luggage compartment floor, Front passenger seat backrest completely folding- with table and fold-flat feature, Front seats with height adjustment, 3-point seat belts in front with height adjustment and seat belt pretensioners, Black roof rails, Luggage compartment cover with convenient open feature- extractable- removable and stowable, Without roll-up sunshade, 3-point seat belts with seat belt pretensioners in rear, License plate carrier in front and rear (ECE), Door and side trim panel in foam film and woven fabric, Heated front seats, Emission standard EU6 AP, Electric luggage compartment opening and closing, Laminated safety glass windshield- heat- and sound-insulating, Child safety lock, Keyless Start without SAFELock, Privacy glass for rear side windows and rear window, Auto-dimming interior rearview mirror, Storage compartment with cover on dashboard, Driver and front passenger airbag with front passenger airbag deactivation- including knee airbag on driver side, Curtain airbag system for front and rear passengers incl. side airbags in front, Chrome trims on the side windows, Carrier frequency 433.92 MHz-434.42 Mhz, 3 single seats in 2nd row of seats with armrest- 2 single seats in 3rd row of seats with Easy Fold, Transport protection film (minimum protection) with additional transport protection measures, Decorative inserts "New Brushed Design" for dashboard and door trim panels in front, Right exterior mirror- convex, Aspherical exterior mirror on driver side, Illuminated vanity mirrors in sun visors, Safety-optimized front head restraints- longitudinally and height adjustable, Without fire extinguisher, Without additional side body covers (stone guard), Front center armrest- height- and longitudinally adjustable- w/ removable storage compartment- 2 vents in rear, Body-colored exterior mirror housings and door handles, Lane keeping system Lane Assist, Black radiator grille with chrome trims on the fins, Autonomous Emergency Braking Front Assist (for Adaptive Cruise Control ACC up to 210 km/h), Without C-rails, Storm Gray headliner, Gearshift knob in leather, Gearshift boot for automatic transmission, Standard luggage compartment floor covering, Without interior light in footwell, Ext. mirrors- power-folding- auto-dimm. on driver side- surround lighting and front pass. ext. mirror lowering funct., Electronic immobilizer, 12-V outlet in center console in rear and in luggage compartment, Without heat accumulator/auxiliary heater, Multi-color Digital Cockpit- selection of different info profiles possible, Vehicle class differentiation -5T0-, Tire Pressure Monitoring System, Start-stop system with regenerative braking, Without protective film for scuff plate, Overhead storage compartments, Lumbar supports in front, Preparation for subsequent activation: Navigation feature "Discover Media" incl. Streaming & Internet, Proactive passenger protection system in combination with Front Assist and Side Assist, Park Distance Control - warning signals for obstacles in the front and rear, Lane change system Side Assist and Rear Traffic Alert, Radio, Alternator 140 A, Without light control, Halogen headlamps and turn signal lamps under one clear lens, Aut. headlight control with separate daytime running light- entry lighting and manual exit lighting, Rain sensor, Headlight range control, 8 speakers, Rear combination lamp- standard design, Interior lights with switch-off delay and dimmer- 2 reading lights in front and rear, Rear fog lamp, Adaptive Cruise Control ACC stop & go incl. speed limiter, Without additional instruments for distance measurement, Front fog lamps and cornering light, Warning lamp for washer fluid level, Headlamp washer system, Diversity antenna for FM reception, Not hot country, Without preparation for two-way radio installation, Without luggage compartment lighting, Without preparation for rotating beacon/siren combination, Non-smoker's package: Storage compartment and 12-V outlet in front, Without identification lights, Without auxiliary heater/parking heater, Warning tone and warning lamp for front seat belts not fastened- warning lamp for rear seat belts not fastened, Automatically-heated washer nozzles in front, App-Connect incl. App-Connect Wireless for Apple CarPlay and Android Auto, Mobile phone interface, Operating voltage 12 V, Equipment options subset for Denmark

**PICTURES**



**Picture viewer:** <https://fm.bilsalg.dk/business/picturebrowser?t=full&guid=6c5c5e75-8f43-400a-9510-42e145cb35a7&carid=21041297>

## OVERVIEW OF DAMAGES AND SHORTAGES

No damages or shortages

## ELECTRICAL AND MECHANICAL CONDITION

N° LOCATION	TYPE	NOTES
1	Is the car drivable	Yes