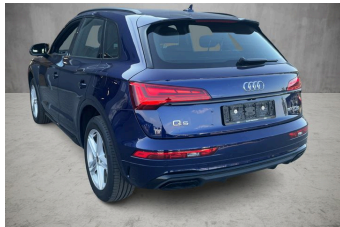


**VEHICLE DESCRIPTION - Audi Q5 S Line 2.0 50 TFSI e PHEV**



<b>First registration date:</b> 8/2023	<b>VIN:</b> WAUZZZFYP2169952
<b>Colour:</b> Blue Metallic Normal gloss	<b>Mileage (km):</b> 10.801
<b>Gear:</b> Automatic (7 Gears)	<b>Fuel type:</b> Hybrid petrol
<b>Body type:</b> SUV	<b>Number of doors:</b> 5
<b>Drive type:</b> 4WD	<b>Model year:</b> 2020-2025
<b>Engine power:</b> 220 kW	<b>Number of seats:</b> 5
<b>Engine size (cc):</b> 1984	<b>Interior:</b> Black Partial leatherette

**VEHICLE DETAILS**

<b>Number of keys:</b> 2	<b>Number of license plates:</b> 2	<b>Registration certificate:</b> Part 1 & 2 present	<b>Service documentation:</b> Yes
<b>Inspection date:</b> 03-06-2026	<b>Last service (year/month):</b> 2025/8	<b>Mileage (km) at last service:</b> 8.116	

**SUMMARY OF THE VEHICLE'S CONDITION**

<b>Is the car in a driveable condition:</b> Yes	<b>Legal tire tread (minimum 1.6 mm):</b> Yes
--	--

## WHEELS

TYPE	SEASON	BRAND	POSITION	RIM	SIZE	TREAD
Fitted	Summer tires		Front Left	Alloy rim	19"	5 mm
Fitted	Summer tires		Rear Right	Alloy rim	19"	5 mm
Fitted	Summer tires		Rear Left	Alloy rim	19"	5 mm
Fitted	Summer tires		Front Right	Alloy rim	19"	5 mm

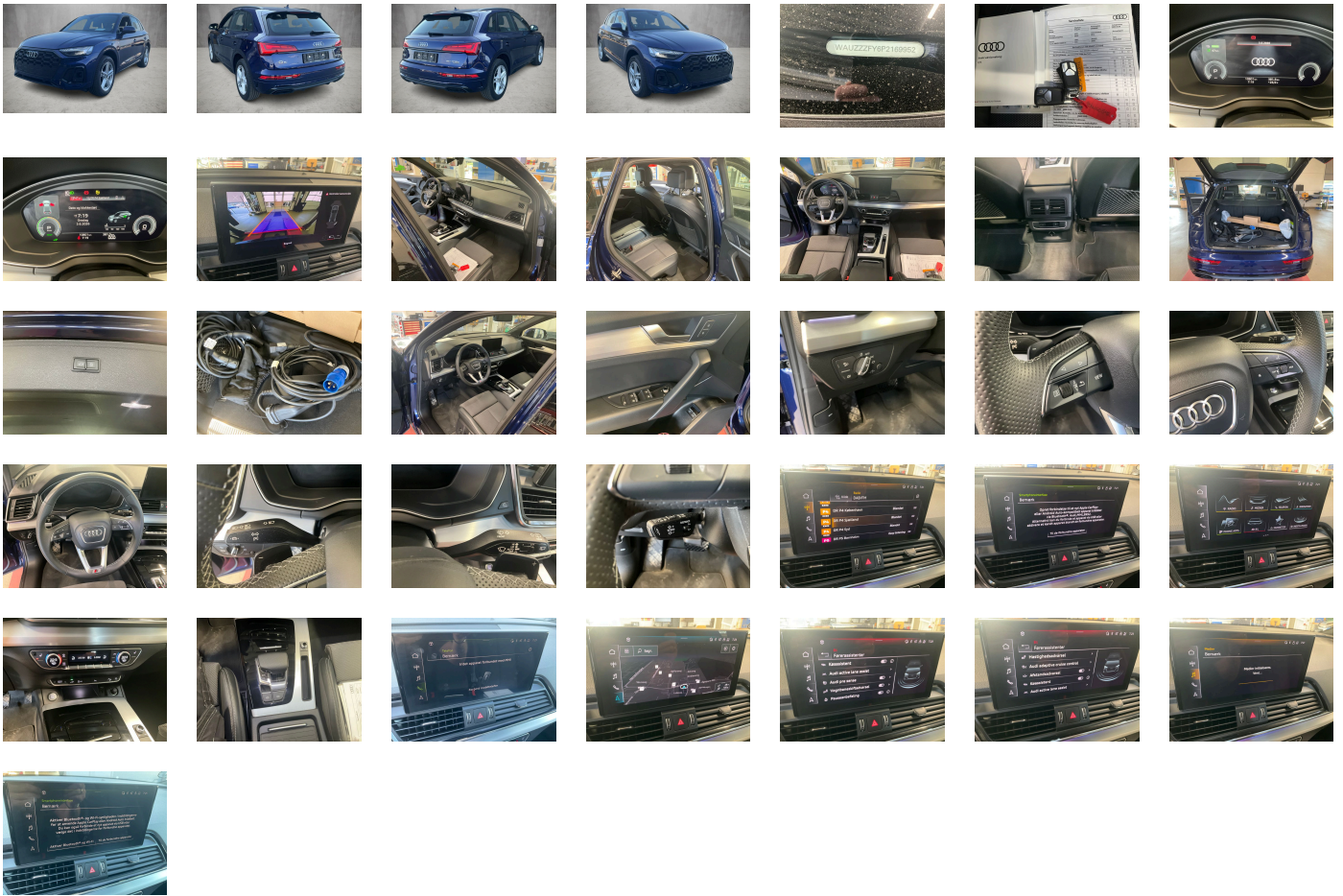
### Legal tire tread (minimum 1.6 mm):

Yes

## ACCESSORIES

Side assist incl. Audi pre sense rear, Assist package Tour, Convenience key with sensor-controlled release of lugg. comp. lid- electric luggage compartment lid, Matrix LED headlights and LED rear lights and headlight cleaning system, Equipment package for Denmark, Comfort package II for Denmark, Business package for Denmark, Equipment package for Germany, Interior S line, Internal control code, Internal control code, Internal control code, No special edition, Wheel bolts- anti-theft, Vehicle class differentiation -FY0/FYF-, Emission standard EU6 AP, Basic, Preparation for trailer hitch, Airbags- front, front passenger airbag can be deactivated, Storage and Luggage Compartment package, Exterior mirrors- electrically adjustable- heated and folding- automatically dimming on both sides, Left exterior mirror- aspherical, Acoustic vehicle alerting system, Right exterior mirror- aspherical, Hybrid propulsion system PHEV, quattro, S line, Audi pre sense city, Disc brakes in rear- 17-inch (ECE), Battery 380 A (68 Ah), Disk brakes- front- 17-inch (ECE), Exterior mirror housings in body color, Beverage holders, Part set without country-specific prescriptive standard, Vehicle tool kit (without vehicle jack), Manual in Danish, Audi drive select, Operating permit- alteration, Standard, Audi connect navigation & infotainment, Smartphone interface, Data module- Europe, Audi connect emergency call & service with Audi connect remote & control, Without Car2X, Standard suspension, Black roof rails with roof rack detection system, Without roof insert (standard roof), Accent surfaces- Gloss Black, Emblems, Insert for the filling up of unleaded fuel, Without step, Electronic immobilizer, Inlays- Matt Brushed Aluminum, Door sill trims with aluminum inlays- front- illuminated- S logo, Parking system plus, Audi pre sense rear, Standard manufacturing sequence, Without fire extinguisher, Standard suspension, Extended pedestrian protection, Standard pedal cluster, Separate daytime running light, Preparation for functions on demand, Hold assist, Without preparation for VTS (vehicle tracking system), No special purpose vehicle- standard equipment, Without danger alarm system, Without alternator, tiptronic, Weight range 11 installation control only- no requirement forecast, Weight category front axle weight range 7, 4-cylinder SI engine 2.0 l unit 06N.E, Luggage compartment cover, Audi adaptive cruise control, Without garage door opener, S tronic (for all-wheel drive), quattro with ultra technology, Rear trim panel (ECE), Audi AG, Roof spoiler, Headlining in cloth- Black, Rear seat bench plus, 3-zone deluxe automatic air conditioning, Matrix LED headlights with dynamic light sequencing and dynamic turn signal, Without head-up display, Electric motor (hybrid electric vehicle)- total system output 220 kW- unit 0ED.D, Instrument cluster- km/h speedometer, Interior mirror- automatically dimming- frameless, Box, With multifunction camera, Luggage compartment mat, Fuel tank, Manual child safety lock, Standard climatic zones, Camera-based traffic sign recognition, Without seat ventilation/massage seat, Without antenna amplifier, Variable head restraints for the front seats, Increase in initial standard fuel filling, Category 0, Fuel system for SI engine with direct injection (FSI), Without special body measures, Without child seat anchora in front (ISOFIX), Reversing camera, Refrigerant R1234yf, Without front license plate carrier, Adhesive film, Loading floor, Ambient Lighting package plus, Without wall mount, Country group A, Charging socket AC type 2, Left-hand drive, Electromechanical power steering, Matrix LED headlights with dynamic light sequencing and dynamic turn signal, e-tron charging system compact (AC) with domestic connector type K (Denmark), Industrial connector CEE 16A- 230V- long and straight- for the e-tron charging system, Charging cable for public charging- mode 3- 11 kW (AC), Loading sill protector- stainless steel, 4-way lumbar support for the front seats, Leather steering wheel- 3-spoke with multifunction plus, Driving on the right, Audi sound system, Axial and vertical adjustable steering column, Without leather, Comfort center armrest- front, Basic equipment variant, Audi virtual cockpit, Not hot country, SI engine, 4-cyl. SI engine 2.0 l/195 kW- hybrid- turbo FSI- system output 220 kW base engine is T4H, MMI navigation plus with MMI touch, Vehicles with special upgrade measures, Production wheels, Standard-production quality, Wheels- 5-twin-spoke star- S design- gloss turned finish- 8.0J x 19- 235/55 R19 tires, Non-smoker version, Regional code " ECE " for radio, Tire pressure loss indicator, Tires 235/55 R19 101W, Tires without specification of tire brand, Tire repair kit, Side airbags- front and head airbag system, Gearshift/selector lever handle, No self-collection, Labels in English and German, LED rear lights with dynamic light sequencing and dynamic turn signal, Without AdBlue tank, Clear glass, Luggage compartment lid- electrically opening and closing, Service indicator 30 000 km or 2 years ( variable ), Reinforced bumpers, Audi connect key, Seat heating- front, Seat belt reminder, Sequence cloth/leather combination, Front seats- manually adjustable, With special labels safety certificates for Denmark, Recuperation, Two-tone horn, Control of special edition prices, Sun visors- front, Side assist, Audi active lane assist, Rear and side windows with heat-insulating glazing, Without roll-up sunshade, Control of series production, Headlight cleaning system, Passenger car design, Convenience key- without Safelock, Without integrated toll system, Type approval country Denmark, Carrier frequency 433.92 MHz-434.42 Mhz, Partition net, Transit coating (type 2), Digital Audio Broadcasting, Installation parts for four-cylinder engine, Without additional front underbody guard, Special identification label (EU), Model name as per new output designation, First-aid kit with warning triangle and high-visibility vests, Auxiliary air conditioning, Sport seats- front, Audi phone box light, Without additional warning lights, Without heat accumulator/auxiliary heater, Windshield with heat-reflecting glass and acoustic glass, Without additional tires, Floor mats- front and rear, Black Styling package, ISOFIX child seat mounting and top tether for the outer rear seats, Without ignition/starter switch locking system- without steering lock, Standard electric, Without auxiliary heater/parking heater, Equipment options subset for Denmark

**PICTURES**



**Picture viewer:** <https://fm.bilsalg.dk/business/picturebrowser?t=full&guid=4c580b75-7bc9-485a-b244-8ccc37396fa8&carid=21034006>

## OVERVIEW OF DAMAGES AND SHORTAGES

No damages or shortages

## ELECTRICAL AND MECHANICAL CONDITION

N° LOCATION	TYPE	NOTES
1	Is the car drivable	Yes