

VEHICLE DESCRIPTION - Škoda Kodiaq Style 1.5 TSI ACT



First registration date:
7/2023

VIN:
TMBJB7NS6R8502222

Colour:
White Metallic Normal gloss

Mileage (km):
55.475

Gear:
Automatic (7 Gears)

Fuel type:
Gasoline

Body type:
SUV

Number of doors:
5

Drive type:
FWD

Model year:
2021-2024

Engine power:
110 kW

Number of seats:
5

Engine size (cc):
1498

Interior:

VEHICLE DETAILS

Number of keys:
2

Number of license plates:
2

Registration certificate:
Part 1 & 2 present

Service documentation:
Yes

Inspection date:
01-05-2026

Last service (year/month):
2025/1


Mileage (km) at last service:
30.418

SUMMARY OF THE VEHICLE'S CONDITION

Is the car in a driveable condition:
Yes

Legal tire tread (minimum 1.6 mm):
Yes

WHEELS

|  TYPE | SEASON | BRAND | POSITION | RIM | SIZE | TREAD |
|---|--------------|-------|-------------|-----------|------|-------|
| Fitted | Summer tires | | Front Left | Alloy rim | 19" | 5 mm |
| Fitted | Summer tires | | Rear Right | Alloy rim | 19" | 5 mm |
| Fitted | Summer tires | | Rear Left | Alloy rim | 19" | 5 mm |
| Fitted | Summer tires | | Front Right | Alloy rim | 19" | 5 mm |

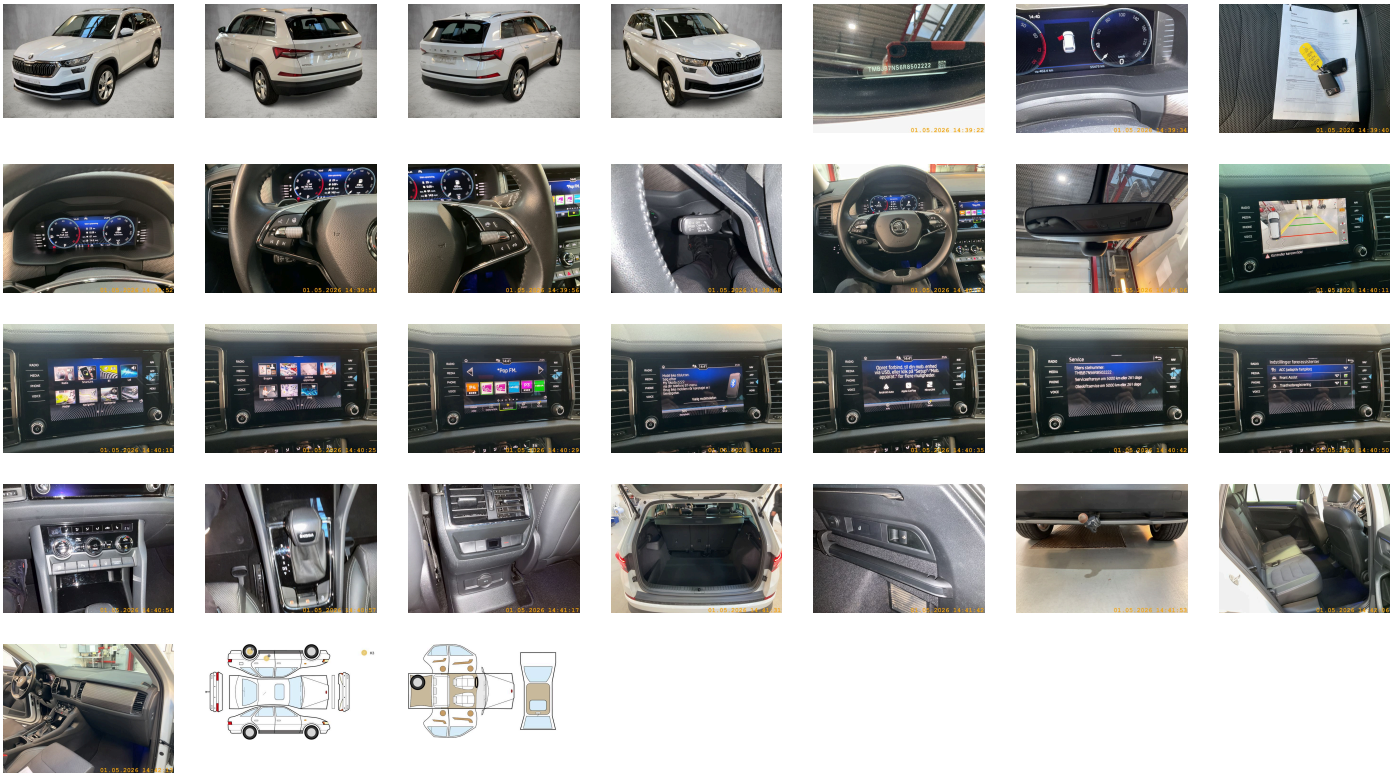
Legal tire tread (minimum 1.6 mm):

Yes

ACCESSORIES



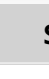

Driving on the right, Sports equipment, Part set without country-specific prescriptive standard, Type approval country Denmark, Operating permit- alteration, 4-cylinder SI engine 1.5 l/110 kW TSI base engine is TJ7/N09/T9F/T57/T0D, Without ECO function, Remote Access / Remote Access + Online Infotainment, Driver alert system, Regional code " ECE " for radio, No special edition, Standard paint coating, Control of series production (deviating in-plant control), Variant, No special purpose vehicle- standard equipment, Without electronic engine sound measures, Shock absorption in front, 7-speed automatic transmission, Tires 235/50 R19 99V, Without bracket, Curb weight range 1, Rear axle weight- type 1, Battery 420 A (70 Ah), With rear view camera system (type 2), Climatronic (3-zone) with air conditioning control panel in rear, Refrigerant R1234yf, Without head-up display, Hatchback, Left-hand drive, Suspension range 03 installation control only- no requirement forecast, Without adapter, Standard battery/alternator capacity, Emergency call system eCall+, Seat trim covers in fabric + leather, LongLife Service Regime, Voice control, Service indicator 30 000 km or 2 years (variable), Chrome package, Without multifunction camera, Drawers under front seats, Interior ambient lighting- type 1, Without dynamic road sign display, DAB - Digital radio reception, Comfort seats in front, 4-cylinder SI engine 1.5 l unit 05E.A, Hill start assist, Parking brake, Mechanical rear seat release, Alloy wheels 7J x 19 "TRIGLAV", Instrument cluster- km/h speedometer, USB front, Standard pedal cluster, Extended and proactive pedestrian protection, Tires without specification of tire brand, Remote Access 1 year, Front stabilizer bar, Rear stabilizer bar, Wheelbase, Standard manufacturing sequence, Installation differentiation for transmission DQ381 -- vehicle components --, Without decals and emblems, Without alternative drive system, Vehicle class differentiation -55A-, Nameplate set in basic style, With electronic steering column lock, Floor mats in front and rear, Manual in Danish, Weight range 6 installation control only- no requirement forecast, Standard climatic zones, Electronic stability control (ESC), Fuel system for fuel-injected SI engine, Special identification label for EC for M1 passenger vehicles, Activated carbon canister (Evaporative Emission Control System (EVAP)), Breakdown kit, Rear shock absorption- basic version 1, Trailer hitch mechanically swiveling and power-detachable, Trims for alloy wheels, Speed-related variable steering assist (Servotronic), Standard wheel bolts, Without additional front underbody guard, Tool kit, Without folding table on front seat backrest, Front-wheel drive, Disc brakes in front, Initial standard fuel filling, Without delivery equipment, Additional exterior noise suppression, Disc brakes in rear, Leather-wrapped multi-function steering wheel- heated- with tiptronic, Without locking and starting systems, Without "drive select", Standard bumpers, Without additional tires, Fuel filler cap, Child seat anchors for child seat system ISOFIX, Without partition, 3-point seat belt for center rear seat, Without roof insert (standard roof), Without luggage/load compartment floor, Without child seat anchora in front (ISOFIX), Without backrest release for front seats, Manual height adjustment for front seats, Storage compartments with cover in trunkside panel, 3-point seat belts in front- with tensioner and height adjustment, Bright roof rails, Three rear head restraints, Luggage compartment cover- sliding, Without additional noise suppression measures for passenger compartment, Without load-through hatch, Without roll-up sunshade, 3-point seat belts- outer rear with ECE label, Without trash bin, Door and side trim panel in leather, Seat heater for front seats separately controlled, Emission standard EU6 AP, Without protective side molding, Without seat ventilation/massage seat, Tailgate/trunk lid unlocking from outside, Heat-reflecting windshield, Manual child safety lock, Central locking system Keyless Entry without SAFELOCK, "SUNSET", Breakaway interior rearview mirror- auto-dimming, Driver knee airbag, Luggage pockets on backrest, Side airbag in front with curtain airbag, Bright decorative trims, Without special body measures, Carrier frequency 433.92 MHz-434.42 Mhz, Roof spoiler, Rear seat bench/backrest- split folding, Transport protection film with additional transport protection measures, Decorative inserts, Right exterior mirror- convex, Left exterior mirror- convex, Sun visors with mirror- illuminated, Front head restraints, Without fire extinguisher, Center armrest in front, Exterior mirror housings and various add-on parts in body color, Without lane keeping system, Forward collision warning incl. autonomous emergency braking- for adaptive cruise control "high", Without tie down straps/net/pocket, Unsplit molded headliner, Without mud flap, Gearshift knob/handle in leather, Luggage compartment floor covering in needle-punched nonwoven, Interior light in footwell in front and rear, Exterior mirrors- auto-dimming- power-folding/adjustable/heated, Electronic immobilizer, 12-volt socket(s), Without heat accumulator/auxiliary heater, Tire pressure monitoring system, Start-stop system with regenerative braking, Scuff plates in door apertures, Overhead storage compartment, Manually adjustable lumbar support in front seats, Radio Bolero, Without extended safety system, Park distance control in front and rear, Without lane change assist, Optional infotainment system (MIB3), Without second battery, Alternator 140 A, High-beam control, LED headlamps, Separate daytime running light with automatic headlight control and manual Coming and Leaving Home feature, Windshield wiper intermittent control with light/rain sensor, Key for locking system with remote control, Headlight range control, 8 speakers (passive), 2 reading lights in front, Rear fog lamp, Adaptive cruise control (with "follow-to-stop") and speed limiter, LED rear combination lamp- variable lighting functions- special styling, Front fog lamps, Washer fluid level indicator, Headlamp washer system, Two-tone horn, Antenna for FM reception only- diversity, Not hot country, Luggage compartment lamp, Without additional malfunction display, Comfort telephony with LTE and wireless charging, Non-smoker's package, Without auxiliary heater/parking heater, Visual and acoustic seat belt reminder- electric contact, Virtual Cockpit, Additional retro-reflectors (door area), Heated washer nozzles in front, "SMART LINK" (wireless for Apple), Operating voltage 12 V, Equipment options subset for Denmark

PICTURES



Picture viewer: <https://fm.bilsalg.dk/business/picturebrowser?t=full&guid=e55ca2c2-d720-42f8-9bbd-c7aaf0d327a9&carid=21001937>

OVERVIEW OF DAMAGES AND SHORTAGES

| N° | LOCATION | TYPE | SEVERITY | INSURANCE | NOTES | DAMAGE GROUP |
|----|---|---|----------|-----------|-------|--------------|
| 1 | L. Rear Door | Dent | C3 | | | |
| |  |  | | | | |
| 2 | L. Rear Rim | Scratch | C3 | | | |
| |  |  | | | | |

Severity explanation:

C0 = No damage / C1 = Simple preparation / C2 = Minor preparation needed / C3 = Can be smart repaired / C4 = Repair/spray paint / C5 = Need replacement

ELECTRICAL AND MECHANICAL CONDITION

| N° | LOCATION | TYPE | NOTES |
|----|---------------------|------|-------|
| 1 | Is the car drivable | Yes | |