

VEHICLE DESCRIPTION - Škoda Scala Life 1.0 TSI



First registration date:
6/2023

VIN:
TMBER7NWX3150529

Colour:
Gray Metallic Normal gloss

Mileage (km):
43.797

Gear:
Automatic (7 Gears)

Fuel type:
Gasoline

Body type:
Hatchback

Number of doors:
5

Drive type:
FWD

Model year:
2018-2024

Engine power:
81 kW

Number of seats:
5

Engine size (cc):
999

Interior:

VEHICLE DETAILS

Number of keys:
2

Number of license plates:
2

Registration certificate:
Not present

Service documentation:
Yes

Inspection date:
26-06-2026

Last service (year/month):
2025/9

Mileage (km) at last service:
29.951

SUMMARY OF THE VEHICLE'S CONDITION

Is the car in a driveable condition:
Yes

Legal tire tread (minimum 1.6 mm):
Yes

WHEELS

 TYPE	SEASON	BRAND	POSITION	RIM	SIZE	TREAD
Fitted	Summer tires		Front Left	Steel rim	16"	5 mm
Fitted	Summer tires		Front Right	Steel rim	16"	5 mm
Fitted	Summer tires		Rear Left	Steel rim	16"	5 mm
Fitted	Summer tires		Rear Right	Steel rim	16"	5 mm
Extra Wheel	Winter tires		Front Left	Alloy rim	16"	6 mm
Extra Wheel	Winter tires		Front Right	Alloy rim	16"	6 mm
Extra Wheel	Winter tires		Rear Left	Alloy rim	16"	6 mm
Extra Wheel	Winter tires		Rear Right	Alloy rim	16"	6 mm

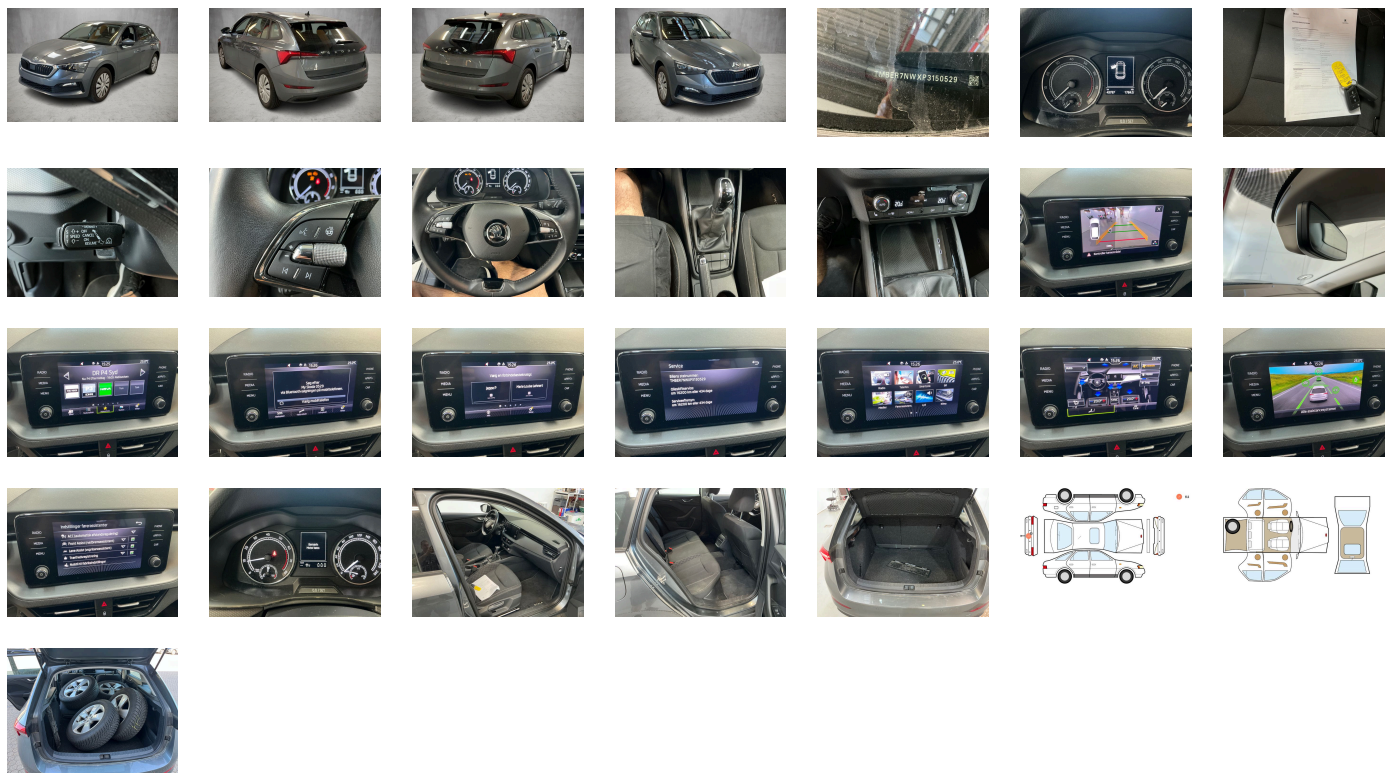
Legal tire tread (minimum 1.6 mm):

Yes

ACCESSORIES

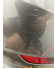


"ADAPTIVE CRUISE CONTROL" to 210km/hour, Easy Start (without SAFE function), rear view camera system, 2-spoke multifunction leather heated steering wheel, Pack 1 Scala, Care connect 1 year, WLTP Blocking, No special edition, Standard wheel bolts, Without adapter, Vehicle class differentiation -655-, Hill hold control, Emission standard EU6 AP, Trailer hitch preparation, Driver knee airbag, Activated carbon canister (Evaporative Emission Control System (EVAP)), Spectacle storage compartment/bracket, Antenna for FM reception only- diversity, Exterior mirrors- power-adjustable/heated, Left exterior mirror- convex, Right exterior mirror- convex, Without alternative drive system, Front-wheel drive, MirrorLink, Ambition, "FRONT ASSIST" incl. adaptive cruise control, Disc brakes in rear (Geomet D), Battery 380 A (59 Ah) EFB+, Disc brakes in front (Geomet D), Outside door mirrors and door handles in body color, Part set without country-specific prescriptive standard, With trim panel, Tool kit, Electronic stability control (ESC), Manual in Danish, Heated washer nozzles in front, Without "drive select", Black Piano, Operating permit- alteration, Without roof rails/roof load rack, Without roof insert (standard roof), Rear shock absorption- basic version 1, Without decorative films/emblems, Shock absorption in front, Without ECO function, Installation differentiation for transmission DQ200 -- vehicle components --, Electronic immobilizer, Decorative inserts Grained Black, Without protective film for scuff plate, Rear parking sensors, Without extended safety system, 2 USB Typ-C vorne, Standard manufacturing sequence, Power windows with comfort operation and circuit breaker, Without fire extinguisher, Without additional malfunction display, Extended and proactive pedestrian and cyclist protection, Standard pedal cluster, Interiorbars and air vents frame Black glossy, Separate daytime running light with automatic headlight control and manual Coming and Leaving Home feature, Fresh air intake system with combination filter, Antifreeze up to -25 degree Celsius tolerance up to -30 degree C, No special purpose vehicle- standard equipment, Without additional noise suppression measures for passenger compartment, Alternator 140 A, Weight range 12 installation control only- no requirement forecast, Suspension range 06 installation control only- no requirement forecast, 3-cylinder SI engine 1.0 l unit 05C.A, Luggage compartment cover, Luggage net, Adaptive cruise control (for DSG) with Speedlimiter, Additional exterior noise suppression, 7-speed automatic transmission, Glove compartment door with light, Without bracket, Long rear window with spoiler, Rear window wiper and washer system with intermittent control, Standard rear axle, Rear axle weight- type 1, Grey ceiling, Unsplit rear seat bench- split folding backrest, Climatronic with impact pressure control- CFC-free, Full LED Headlights, Instrument cluster- km/h speedometer, Breakaway interior rearview mirror- auto-dimming, Spaceback, With multifunction camera, Without two-sided floor surface, Without refrigerator/glove compartment cooling system, Mounting fixture in luggage compartment, Without folding table on front seat backrest, Standard climatic zones, Without dynamic road sign display, Three rear head restraints, Hight-adjustable head restraints for front seats, Initial standard fuel filling, Fuel system for fuel-injected SI engine (tropicalized), With rear view camera system (type 2), Radiator grille with chrome molding, Refrigerant R1234yf, Transport protection film with additional transport protection measures, Standard paint coating, Without luggage/load compartment floor, Without add. lights (interior lighting), Left-hand drive, Power steering, Without backrest release for front seats, Curb weight range 1, Without light control, Manually adjustable lumbar support in front seats, 2-spoke multifunction leather heated steering wheel, Driving on the right, 8 speakers (passive), Axial and vertical adjustable steering column, Dynamic headlight range control (self-adjusting while driving), Center armrest in front "Jumbo Box", Basic equipment variant, Boardcomputer Maxidot, Center console, Driver alert system, Not hot country, 3-cylinder SI engine 1.0 l/81 kW TSI base engine is TJ4/TC5, "Standard Plus" version, Without navigation device, Front fog lamps, Remote Access / Pro-active service, Rear floor panel module- type 3, Steel wheels cover Tecton 16", Steel wheels 6x16" ET 40 "Tecton", Radio Bolero 8", Non-smoker's package, Regional code " ECE " for radio, Tire pressure monitoring system, With umbrella, Tires 205/55 R16 91V super-low rolling resistance, Tires without specification of tire brand, Breakdown kit, Wheelbase, 3-point seat belts in front- with tensioner and height adjustment, Emergency call system eCall+, Side airbag in front with curtain airbag, Gearshift knob/handle in leather, LED rear combination lamp- dynamic turn signal- special styling, Tailgate without electrical opening, Service indicator 30 000 km or 2 years (variable), Visual and acoustic seat belt reminder- electric contact, 3-point seat belts- outer rear with ECE label, 3-point seat belt for center rear seat, Seat Ambition, Manual height adjustment for front seats, Seat heater for front seats separately controlled, Key for locking system with remote control, Start-stop system with regenerative braking, Single-tone horn, Sun visors with mirror and airbag label on front passenger side, Without voice control, Without lane change assist, Spurhalte assist, Side and rear windows in heat-insulating glass, Without protective side molding, Without socket, Body-colored bumpers, Front stabilizer bar, Without drawers under front seats, Without headlamp washer system, Windshield wiper intermittent control with light/rain sensor, Nameplate set in basic style, Without waste bin, Central locking system Keyless Go without SAFELock, Type approval country Denmark, Carrier frequency 433.92 MHz-434.42 Mhz, Without partition, Door panels with upholstery, 4 doors, DAB - Digital radio reception, Additional front underbody guard, Special identification label for EC for M1 passenger vehicles, Without delivery equipment, Rear overhang- medium, Standard Seats, Bluetooth, LongLife Service Regime, Without heat accumulator/auxiliary heater, Heat-reflecting windshield, Without washer fluid level indicator, Without second battery, Without floor mats, Standard decorative trims, Without additional side body covers (stone guard), Child seat anchors f. child seat system i-Size- 2x top tether and child seat anchors in front on front passenger side, Without electronic steering column lock, Without auxiliary heater/parking heater, Equipment options subset for Denmark

PICTURES



Picture viewer: <https://fm.bilsalg.dk/business/picturebrowser?t=full&guid=9097e7ed-1a42-49cd-85b2-acca319a8a64&carid=20983538>

OVERVIEW OF DAMAGES AND SHORTAGES

N°	LOCATION	TYPE	SEVERITY	INSURANCE	NOTES	DAMAGE GROUP
1		Mangler			indlevering af hjul	
2	Rear Bumper	Scratch	C4		Reporting needed	
						

Severity explanation:

C0 = No damage / C1 = Simple preparation / C2 = Minor preparation needed / C3 = Can be smart repaired / C4 = Repair/spray paint / C5 = Need replacement

ELECTRICAL AND MECHANICAL CONDITION

N°	LOCATION	TYPE	NOTES
1	Is the car drivable	Yes	