

VEHICLE DESCRIPTION - VW T-Cross Style 1.5 TSI



First registration date:
8/2023

VIN:
WVGZZC13PY141738

Colour:
Gray Normal gloss

Mileage (km):
49.041

Gear:
Automatic (7 Gears)

Fuel type:
Gasoline

Body type:
SUV

Number of doors:
5

Drive type:
FWD

Model year:
2018-2024

Engine power:
110 kW

Number of seats:
5

Engine size (cc):
1498

Interior:

VEHICLE DETAILS

Number of keys:
2

Number of license plates:
2

Registration certificate:
Part 1 & 2 present

Service documentation:
Yes

Inspection date:
27-05-2026

Last service (year/month):
2025/4


Mileage (km) at last service:
29.804

SUMMARY OF THE VEHICLE'S CONDITION

Is the car in a driveable condition:
Yes

Legal tire tread (minimum 1.6 mm):
Yes

WHEELS

 TYPE	SEASON	BRAND	POSITION	RIM	SIZE	TREAD
Fitted	Summer tires		Rear Left	Alloy rim	17"	6 mm
Fitted	Summer tires		Front Right	Alloy rim	17"	6 mm
Fitted	Summer tires		Front Left	Alloy rim	17"	6 mm
Fitted	Summer tires		Rear Right	Alloy rim	17"	6 mm
Extra Wheel	Winter tires		Rear Left	Steel rim	16"	8 mm
Extra Wheel	Winter tires		Front Right	Steel rim	16"	8 mm
Extra Wheel	Winter tires		Front Left	Steel rim	16"	8 mm
Extra Wheel	Winter tires		Rear Right	Steel rim	16"	8 mm

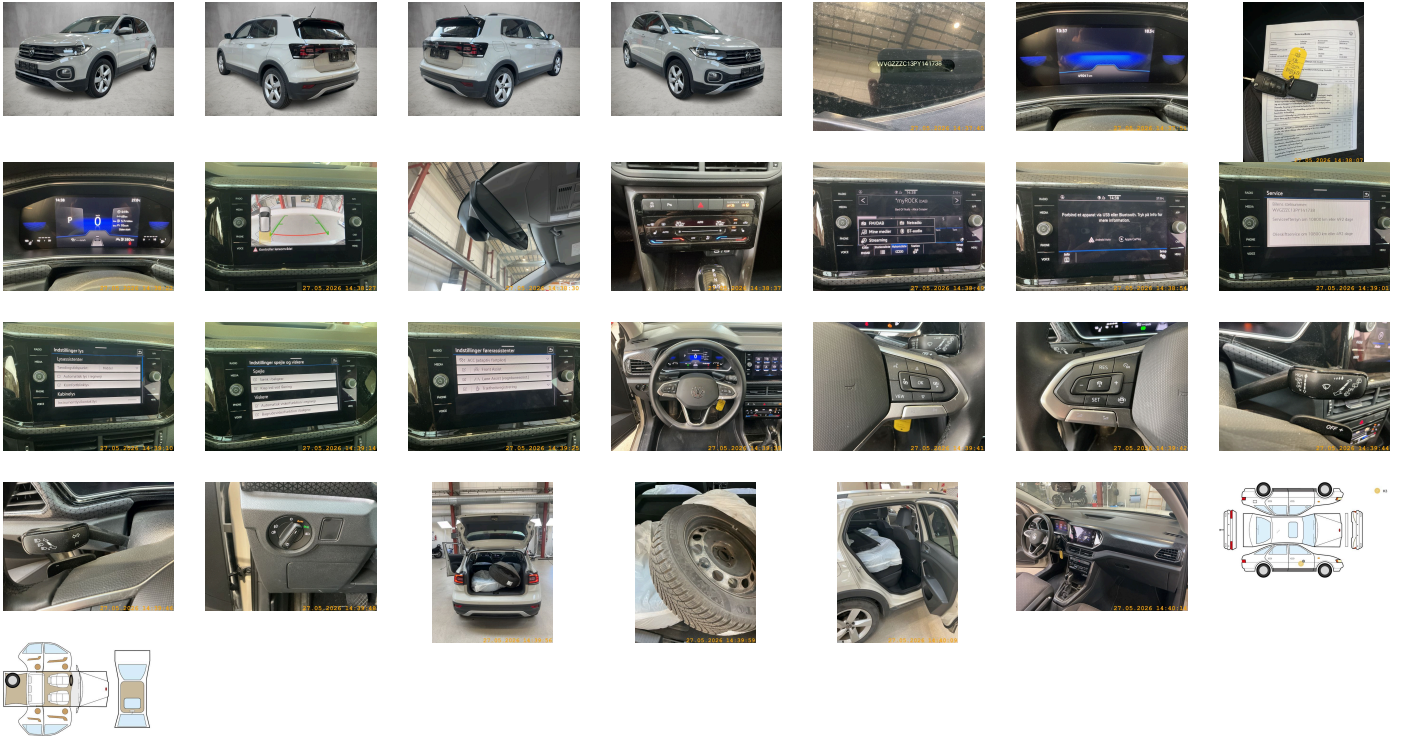
Legal tire tread (minimum 1.6 mm):

Yes

ACCESSORIES



Driving on the right, "Standard Plus" version, Category 0, Executive equipment, Part set without country-specific prescriptive standard, Type approval country Denmark, Operating permit- alteration, 4-cylinder SI engine 1.5 l TSI- 110 kW, Without ECO function, Online service- with OCU- with head unit coding- without engine immobilizer interconnection, Driver alert system, Regional code " ECE " for radio, No special edition, No special purpose vehicle- standard equipment, Vehicles without special upgrade measures, Shock absorption in front, 7-speed automatic transmission or dual-clutch transmission DSG- note: PR family EDF, Battery 380 A (59 Ah) EFB+, Tires 205/55 R17- rolling resistance class A, Rear view camera system, Refrigerant R1234yf, Hatchback, Left-hand drive, Suspension range 27 installation control only- no requirement forecast, Standard battery/alternator capacity, Emergency call service, no registration required- service is activated upon delivery, 4-cylinder SI engine 1.5 l unit 05E.D, Inserts of front seats and outer rear seats in fabric "Style", Adaptive Cruise Control ACC up to 210 km/h and Autonomous Emergency Braking Front Assist, Lights & Vision package, Without proactive passenger protection system, LongLife Service Regime, Without voice control, Service indicator 30 000 km or 2 years (variable), Chrome package, Multifunction camera, Drawer under right front seat, Ambient lighting, Without dynamic road sign display, Digital radio reception DAB+, Sports comfort seats in front, Radio "Ready 2 Discover" incl. "Streaming & Internet", Control of campaigns, Equipment change, Vehicles without proactive passenger protection system, Hill start assist, Instrument cluster with electronic speedometer- odometer and trip odometer- tachometer, 2 USB-C ports in the front- 2 USB-C charging sockets on the center console in rear- charging capacity up to 45 W, Standard pedal cluster, Pedestrian and cyclist monitoring, Tires without specification of tire brand, Winter package, Denmark: Comfort package forces 9WX-7P4-9ZV-4KF-6YD, Denmark: DK Package TL forces PLA-WW1-PH3 CL/HL forces PLA-KA1-PH3, Preparation for We Connect and We Connect Plus, Front stabilizer bar, 4 doors, Wheelbase, Dual-clutch transmission DSG DQ200, Pamplona manufacturing sequence, Without decals and emblems, Without alternative drive system, Elimination of nameplate for engine designation on luggage compartment lid, Standard rear axle, Rear exhaust tailpipe (standard), Carpet mats in front and rear, Manual in Danish, Weight range 14 installation control only- no requirement forecast, Standard climatic zones, Rear overhang- short, Electronic Stability Control w/ driver steering recommendation- ABS- ASR- EDL- EDTC and trailer stabilization, Fuel system for fuel-injected SI engine (tropicalized), Without trailer hitch, Special identification label for EC for M1 passenger vehicles, Activated carbon canister (Evaporative Emission Control System (EVAP)), Tire Mobility Set: 12-volt compressor and tire sealant, Rear shock absorption- heavy-duty version, Disc brakes in rear, Trims for alloy wheels, Power steering, Standard wheel bolts, Without additional front underbody guard, Without tool kit and jack, Warning triangle, Front-wheel drive, Disc brakes in front, Initial standard fuel filling, Without delivery equipment, Vehicle class differentiation -2GC-, Height and longitudinally adjustable steering column, Leather-wrapped multi-function steering wheel with shifting paddles, Without Adaptive Chassis Control, Body-colored bumpers- radiator grille w/ chrome trim and fin- light elements with chrome bezel, Fresh air intake system with combinationfilter, Without additional tires, ISOFIX anchors for child seats on outer rear bench seats and on front passenger seat- compatible for i-Size, 3-point seat belt for center rear seat, Without roof insert (standard roof), Luggage compartment floor adjustable in 2 heights, Completely folding front passenger seat backrest, Front seats with height adjustment, Unsplit rear bench seat- sliding- asymmetric split folding backrest, 3-point seat belts in front with height adjustment and seat belt pretensioners, 3 head restraints in rear, Silver-anodized roof rails, Luggage compartment cover, 3-point seat belts with seat belt pretensioners for the outer rear seats, License plate carrier in front and rear (ECE), Door and side trim panel, Heated front seats, Emission standard EU6 AP, Laminated safety glass windshield- heat-insulating, Central locking system without SAFELock- with radio remote control and 2 remote control folding keys, Privacy glass for rear side windows and rear window, Auto-dimming interior rearview mirror, Rear floor panel module- type 1, Power windows, Driver and front passenger airbag with front passenger airbag deactivation, Map pockets on the back of each front seat, Curtain airbag system for front and rear passengers incl. side airbags in front, Chrome trim on the side window bottoms, Glove compartment door with light, 4 alloy wheels "Chesterfield" 6.5) x 17, Carrier frequency 433.92 MHz-434.42 Mhz, Transport protection film (minimum protection) with additional transport protection measures, Decorative inserts "Lizard" for dashboard, Right exterior mirror- convex, Aspherical exterior mirror on driver side, Vanity mirrors in sun visors, Safety-optimized front head restraints, Without adhesive film, Front center armrest- longitudinally adjustable- with storage compartment- 2 USB charging sockets in rear, Body-colored exterior mirror housings and door handles, Lane keeping system Lane Assist, Autonomous Emergency Braking Front Assist (for Adaptive Cruise Control ACC up to 210 km/h), Headliner, Hand brake lever handle in leather, Gearshift knob in leather, Lamps in front footwell, Without additional seals outside, Exterior mirrors- power-adjustable- folding and heated- w/ front passenger exterior mirror lowering function, Electronic immobilizer, Without heat accumulator/auxiliary heater, Multi-color Digital Cockpit- selection of different info profiles possible, Tire Pressure Monitoring System, Start-stop system with regenerative braking, Without protective film for scuff plate, Lumbar supports in front, Preparation for subsequent activation: Navigation feature "Discover Media" incl. Streaming & Internet, Without extended safety system, Park Distance Control - warning signals for obstacles in the front and rear, Without lane change assist, Radio, LED headlamps for low beam and high beam, Without second battery, Alternator 140 A, Without light control, Aut. headlight control with separate daytime running light- entry lighting and manual exit lighting, Rear window wiper with intermittent control, Rain sensor, Dynamic headlight range control, 6 speakers, LED interior lights with switch-off delay and dimmer- 2 LED reading lights in front and rear, Rear fog light on one side- back-up light on both sides, Adaptive Cruise Control ACC stop & go incl. speed limiter, LED rear combination lamps (except turn signals a. back-up lamps)- with side marker lamp, Front fog lamps and cornering light, Warning lamp for washer fluid level, Without headlamp washer system, Single-tone horn, Diversity antenna for FM reception, Not hot country, Air Care Climatronic 2 zone automatic climate control with enhanced air filterwith activated carbon, Luggage compartment lighting, Non-smoker's package: 12-V outlet in front, Warning signal and warning light for front and rear seat belts not fastened, Automatically-heated washer nozzles in front, App-Connect incl. App-Connect Wireless for Apple CarPlay and Android Auto, Mobile phone interface with inductive charging feature, Equipment options subset for Denmark

PICTURES



Picture viewer: <https://fm.bilsalg.dk/business/picturebrowser?t=full&guid=7606bbf3-628b-40c5-b6df-9c34b9ee1278&carid=20968670>

OVERVIEW OF DAMAGES AND SHORTAGES

N°	LOCATION	TYPE	SEVERITY	INSURANCE	NOTES	DAMAGE GROUP
1	R. Front Door	Dent	C3			
						

Severity explanation:

C0 = No damage / C1 = Simple preparation / C2 = Minor preparation needed / C3 = Can be smart repaired / C4 = Repair/spray paint / C5 = Need replacement

ELECTRICAL AND MECHANICAL CONDITION

N°	LOCATION	TYPE	NOTES
1	Is the car drivable	Yes	