

VEHICLE DESCRIPTION - Seat León FR 1.5 eTSI MHEV



First registration date:
7/2023

VIN:
VSSZZKLXPR059506

Colour:
Red Metallic Normal gloss

Mileage (km):
39.586

Gear:
Automatic (7 Gears)

Fuel type:
Hybrid petrol

Body type:
Estate Wagon

Number of doors:
5

Drive type:
FWD

Model year:
2020

Engine power:
110 kW

Number of seats:
5

Engine size (cc):
1498

Interior:
Dark grey Fabric

VEHICLE DETAILS

Number of keys:
2

Number of license plates:
2

Registration certificate:
Part 1 & 2 present

Service documentation:
Yes

Inspection date:
15-05-2026

Last service (year/month):
2025/6

Mileage (km) at last service:
27.636

SUMMARY OF THE VEHICLE'S CONDITION

Is the car in a driveable condition:
Yes

Legal tire tread (minimum 1.6 mm):
Yes

WHEELS

 TYPE	SEASON	BRAND	POSITION	RIM	SIZE	TREAD
Fitted	Summer tires		Front Left	Alloy rim	17"	5 mm
Fitted	Summer tires		Rear Right	Alloy rim	17"	5 mm
Fitted	Summer tires		Rear Left	Alloy rim	17"	5 mm
Fitted	Summer tires		Front Right	Alloy rim	17"	5 mm

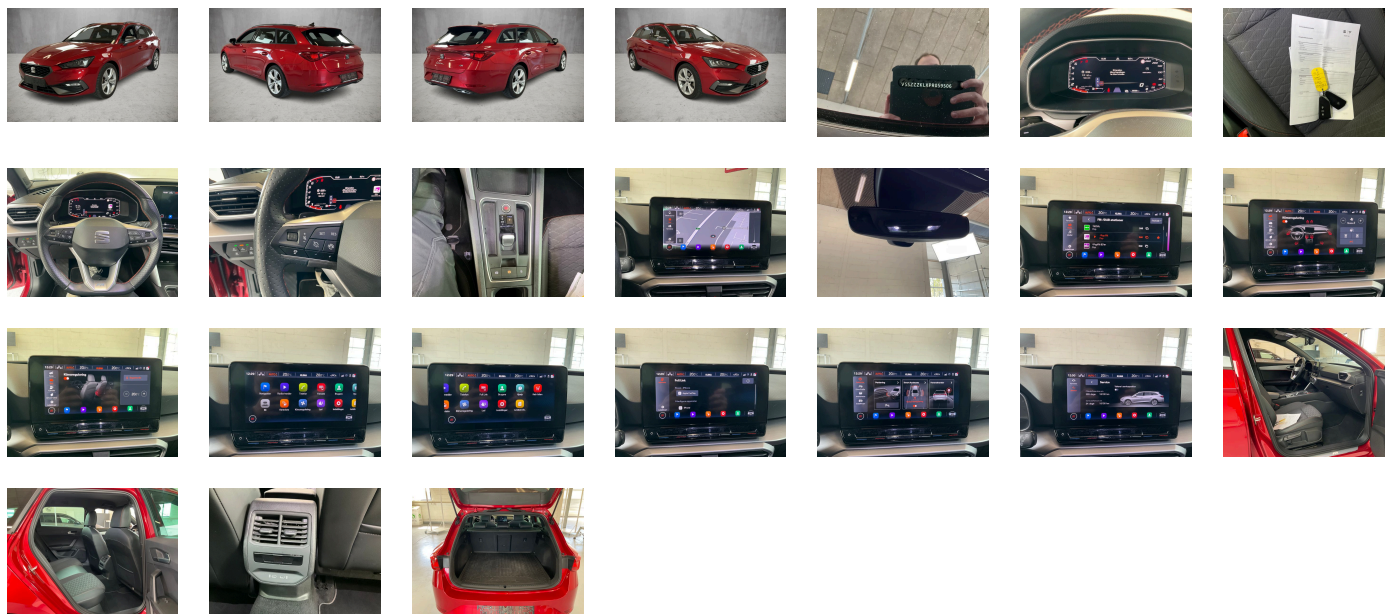
Legal tire tread (minimum 1.6 mm):

Yes

ACCESSORIES





Driving on the right, In-plant control of self-collection, Exclusive sports equipment FR, Part set without country-specific prescriptive standard, Type approval country Denmark, Alloy wheels 7.5J x 17, Operating permit- alteration, 4-cylinder gasoline engine 1.5 l/110 kW mild hybrid- TSI base engine: TJ7- eTSI, Online service- with OCU- with head unit coding- without engine immobilizer interconnection, Driver alert system, Regional code " ECE " for radio, Without charging cable, No special edition, Control of series production, Without customized installation, Basic equipment variant, No special purpose vehicle- standard equipment, Without antenna amplifier, Standard electronic engine sound, Vehicles without special upgrade measures, Without Car2X, Shock absorption in front, 7-speed automatic transmission "A7", Tires 225/45 R17 91W, Without Connect package 1, Battery 380 A (59 Ah) EFB+, Without camera systems/accident sensors, Climatronic (3-zone) with air conditioning control panel in rear, Refrigerant R1234yf, Without head-up display, Station wagon LEON Sportstourer, Left-hand drive, Suspension range 13 installation control only- no requirement forecast, Standard battery/alternator capacity, Pan-European emergency call service, Seat trim covers in fabric, LongLife Service Regime, Voice control, Service indicator 30 000 km or 2 years (variable), Chrome package, With multifunction camera, Drawer under left front seat, Interior ambient lighting-type 1, With dynamic road sign display, Digital radio reception, Standard seats in front, Decorative inserts for console, 4-cylinder SI engine 1.5 l unit 05E.A, Without hill start assist/hill descent control/comfort driving assist, Parking brake, Mechanical rear seat release, Instrument cluster- km/h speedometer, External- USB type C data socket(s) and charging socket(s), Standard pedal cluster, 48-V electric system, Scuff plates in door apertures (illuminated), Tires without specification of tire brand, Front stabilizer bar, Without rear stabilizer bar, Wheelbase, Installation differentiation for transmission DQ200 -- vehicle components --, Standard manufacturing sequence, Hybrid drive MHEV "eTSI", Nameplate set in basic style, Standard rear axle, Without floor mats, Manual in Danish, Weight range 7 installation control only- no requirement forecast, Standard climatic zones, Without special specifications, Brake control system for vehicles with electric drive (ESC and electromechanical brake booster), Fuel system for fuel-injected SI engine, Without trailer hitch, Special identification label for EC for M1 passenger vehicles, Activated carbon canister (Evaporative Emission Control System (EVAP)), Breakdown kit, Rear shock absorption- sports version, Without surround lighting/welcome light (mirror), Disc brakes in rear, Speed-related variable steering assist (Servotronic), Standard wheel bolts, Without mass damper for steering wheel, Without additional front underbody guard, Tool kit, Without first aid kit and warning triangle, Front-wheel drive, Electronic differential lock XDS- dynamic traction support, Disc brakes in front (Geomet D), Initial standard fuel filling, Without delivery equipment, Vehicle class differentiation -5FN-, Leather-wrapped multi-function steering wheel- heated- with tiptronic, Without locking and starting systems, Driving profile selection and conventional shock absorber, Sports bumpers, Labels in Danish- Finish and Swedish, Without additional tires, Type sign and company logo, Without electric motor (hybrid), Child seat anchors f. child seat system i-Size- 2x top tether and child seat anchors in front on front passenger side, Without partition, 3-point seat belt for center rear seat, Without roof insert (standard roof), Variable luggage/load compartment floor, Without backrest release for front seats, Part-leather door and side trim panel, Manual height adjustment for front seats, Unsplit rear seat bench- split folding backrest- with center armrest, 3-point seat belts- front, Black roof rails, Three rear head restraints, Luggage compartment cover- sliding, Without additional noise suppression measures for passenger compartment, 3-point seat belts- outer rear with ECE label, Front license plate carrier (large), Seat heater for front seats separately controlled, Emission standard EU6 AP, Without seat ventilation/massage seat, Tailgate/trunk lid unlocking from outside, Heat-reflecting windshield, With emergency steering support with turn assist, Central locking system Keyless Go without SAFELOCK, Side windows in heat-insulating glass- from B-pillar and rear window dark tinted, Breakaway interior rearview mirror- auto-dimming, Standard dashboard, Rear floor panel module- type 4, Power windows with comfort operation and circuit breaker, Airbag on driver and front passenger side- without knee airbag- with front passenger airbag deactivation, Luggage pockets on backrest, Standard decorative trims, Luggage compartment trim- with storage compartments, Without special body measures, UWB-capable country and carrier frequency- 433.92 to 434.42 MHz, Exterior mirrors: convex on driver side- convex on front passenger side, Rear spoiler, Without surface protection- with additional transport protection measures, Folding grab handles- multi-piece, Sun visors with mirror- illuminated- with airbag label on sun visor and B-pillar, Front head restraints, Without fire extinguisher, Side airbag in front with curtain airbag and interaction airbag in front, Without additional side body covers (stone guard), Center armrest in front, Exterior mirror housings painted, Emblems, Lane keeping system, Unsplit molded headliner, Without gearshift knob/handle, Exterior mirrors- power-folding/ adjustable- heated- w/ front passenger exterior mirror lowering function, Electronic immobilizer, 12-volt socket in luggage boot, Without heat accumulator/auxiliary heater, Without preparation for VTS (vehicle tracking system), Freely programmable instrument cluster Medium, Tire pressure monitoring system, Start-stop system with regenerative braking, Manually adjustable lumbar support in front seats, Navigation system - High, Without extended safety system, Park distance control, Without lane change assist, Without mode 3 charging cable, Data storage device for EU- integrated, Optional infotainment system (MIB3), Without second battery, High-beam control, LED headlamps, Forward collision warning with warning and braking reaction to vehicles- pedestrians and cyclists, Rear window wiper and washer system with intermittent control, Windshield wiper intermittent control with light/rain sensor, Headlight range control, Speakers in front and rear, LED rear combination lamp, Two reading lights in front- two in rear, Rear fog lamp, Adaptive cruise control (with "follow-to-stop") and speed limiter, Front fog lamps, Without headlamp washer system- without washer fluid level indicator, Single-tone horn, Antenna for FM reception only- diversity, Not hot country, Belt-driven integrated starter alternator 48 V 110 - 250 A, Separate daytime running light with automatic headlight control and automat. Coming and Leaving Home feature, Non-smoker's package, Without auxiliary heater/parking heater, Visual and acoustic seat belt reminder- electric contact in front and rear, Without heated washer nozzles, Mirror Link plus Wireless "App" plus RSE (preparation), Mobile phone interface, Operating voltage 12 V, Equipment options subset for Denmark

PICTURES



Picture viewer: <https://fm.bilsalg.dk/business/picturebrowser?t=full&guid=de57ea07-328b-42cd-9594-7cfcdb39349e&carid=20934873>

OVERVIEW OF DAMAGES AND SHORTAGES

N°	LOCATION	TYPE	SEVERITY	INSURANCE	NOTES	DAMAGE GROUP
1	L. Front Quarter Panel	Rep Defect	C4		Reporting needed	
						
2	Rear Bumper	Scratch	C3			
						

Severity explanation:

C0 = No damage / C1 = Simple preparation / C2 = Minor preparation needed / C3 = Can be smart repaired / C4 = Repair/spray paint / C5 = Need replacement

ELECTRICAL AND MECHANICAL CONDITION

N°	LOCATION	TYPE	NOTES
1	Is the car drivable	Yes	