

VEHICLE DESCRIPTION - Cupra Formentor High 1.5 TSI



First registration date:
7/2023

VIN:
VSSZZZKMRR004033

Colour:
Red Metallic Normal gloss

Mileage (km):
43.472

Gear:
Automatic (7 Gears)

Fuel type:
Gasoline

Body type:
SUV

Number of doors:
5

Drive type:
FWD

Model year:
2020-2024

Engine power:
110 kW

Number of seats:
5

Engine size (cc):
1498

Interior:

VEHICLE DETAILS

Number of keys:
2

Number of license plates:
2

Registration certificate:
Part 1 & 2 present

Service documentation:
Yes

Inspection date:
30-04-2026

Last service (year/month):
2025/6

Mileage (km) at last service:
30.113

SUMMARY OF THE VEHICLE'S CONDITION

Is the car in a driveable condition:
Yes

Legal tire tread (minimum 1.6 mm):
Yes

WHEELS

 TYPE	SEASON	BRAND	POSITION	RIM	SIZE	TREAD
Fitted	Winter tires		Front Left	Alloy rim	18"	5 mm
Fitted	Winter tires		Front Right	Alloy rim	18"	5 mm
Fitted	Winter tires		Rear Left	Alloy rim	18"	5 mm
Fitted	Winter tires		Rear Right	Alloy rim	18"	5 mm
Extra Wheel	Summer tires		Front Left	Alloy rim	19"	5 mm
Extra Wheel	Summer tires		Front Right	Alloy rim	19"	5 mm
Extra Wheel	Summer tires		Rear Left	Alloy rim	19"	5 mm
Extra Wheel	Summer tires		Rear Right	Alloy rim	19"	5 mm

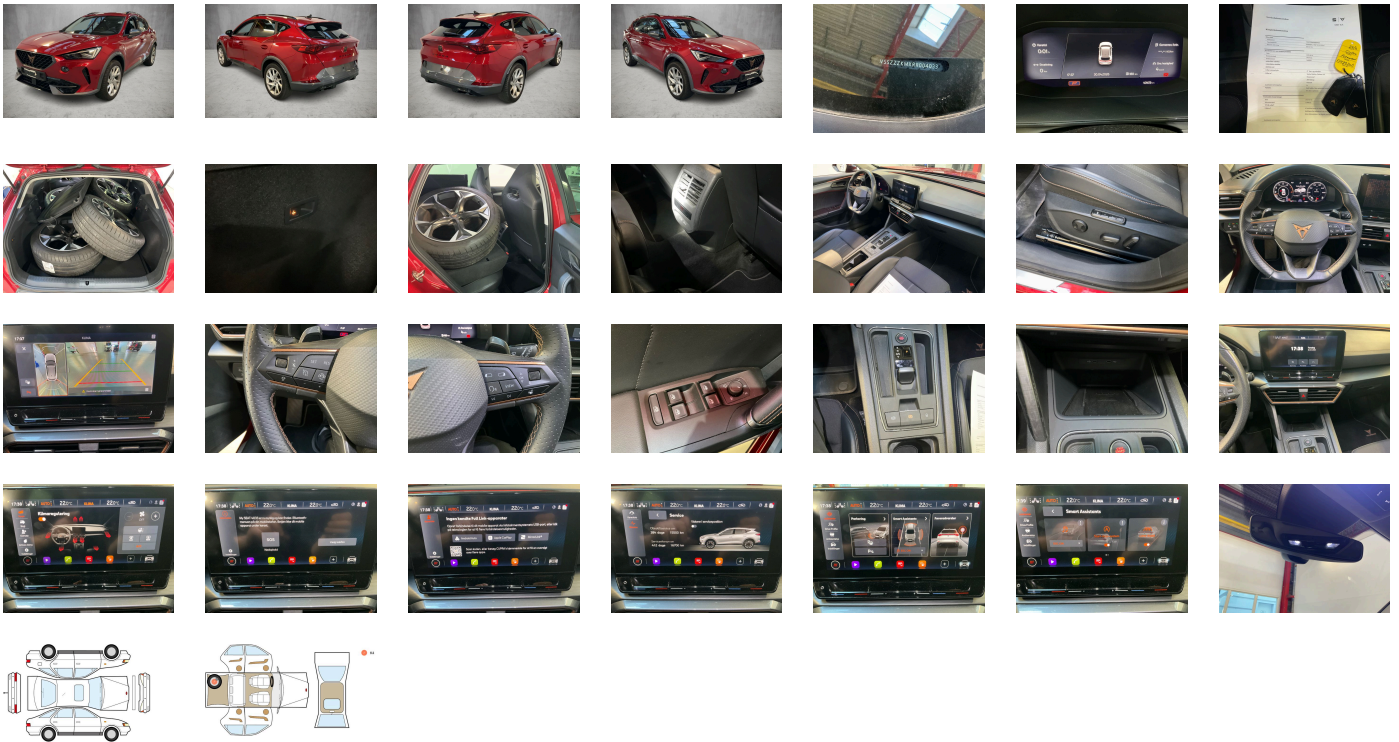
Legal tire tread (minimum 1.6 mm):

Yes

ACCESSORIES






Trailer hitch aftermarket equipment- power-folding, Driving on the right, In-plant control of self-collection, Comfort sports equipment Formentor, Part set without country-specific prescriptive standard, Type approval country Denmark, Operating permit- alteration, Alloy wheels 8J x 19, 4-cylinder gasoline engine 1.5 l/110 kW TSI-base engine: TJ7/N09/T9F- "TSI", Online service- with OCU- without head unit coding- without engine immobilizer interconnection, Driver alert system, Regional code "ECE" for radio, Without charging cable, No special edition, Control of series production, Without customized installation, Basic equipment variant, No special purpose vehicle- standard equipment, Antenna amplifier type 1, Standard electronic engine sound, Vehicles without special upgrade measures, Without Car2X, Shock absorption in front, 7-speed automatic transmission "A7", Battery 420 A (70 Ah), With front and rear view camera system and two side cameras, Climatronic (3-zone) with air conditioning control panel in rear, Refrigerant R1234yf, Without head-up display, MPV Formentor, Left-hand drive, Suspension range 05 installation control only- no requirement forecast, Standard battery/alternator capacity, Pan-European emergency call service, Seat trim covers in fabric, Connectivity Box: wireless charging station + mobile phone signal booster, Area View, Parking steering assistant, LED Interior Lighting package: glove compartment- footwell- stor. comp.- multicolor ambient lighting all around, Trailer hitch preparation, 19-inch alloy wheels "Exclusive" 38/3- machined- Matte Sports Black, Matrix LED, LongLife Service Regime, Voice control, Service indicator 30 000 km or 2 years (variable), Chrome package, With multifunction camera, Drawer under right front seat, Interior ambient lighting- type 2, Without dynamic road sign display, Digital radio reception, Sports seats in front, Decorative inserts for console, 4-cylinder SI engine 1.5 l unit 05E.A, Parking brake, Standard rear seat release, Instrument cluster- km/h speedometer, External- USB type C data socket(s) and charging socket(s), Standard pedal cluster, Standard electric, Scuff plates in door apertures (illuminated), Tires without specification of tire brand, Black fabric racing shell seats with power adjustment and memory feature (incl. Winter package), Front stabilizer bar, Rear stabilizer bar, Wheelbase, Standard manufacturing sequence, Installation differentiation for transmission DQ381 -- vehicle components --, Without alternative drive system, Without nameplate set (without model designation), 4-link rear suspension, Rear exhaust tailpipe (standard), Without floor mats, Manual in Danish, Weight range 4 installation control only- no requirement forecast, Standard climatic zones, Without special specifications, Brake control system for vehicles without electric drive (ESC and electromechanical brake booster), Fuel system for fuel-injected SI engine, Special identification label for EC for M1 passenger vehicles, Activated carbon canister (Evaporative Emission Control System (EVAP)), Breakdown kit, Rear shock absorption- basic version 1, With welcome light (mirror), Disc brakes in rear, Dynamic steering, Wheel bolts with anti-theft protection (unlockable), Without mass damper for steering wheel, Without additional front underbody guard, Tool kit, Without first aid kit and warning triangle, Front-wheel drive, Electronic differential lock XDS- dynamic traction support, Disc brakes in front, Initial standard fuel filling, Without delivery equipment, Vehicle class differentiation -5FF-, Leather-wrapped multi-function steering wheel- heated- with tiptronic, Without locking and starting systems, Driving profile selection and conventional shock absorber, Sports bumpers, Without additional tires, Type sign and company logo, Without electric motor (hybrid), Child seat anchors f. child seat system i-Size- 2x top tether and child seat anchors in front on front passenger side, Without partition, 3-point seat belt for center rear seat, Without roof insert (standard roof), Variable luggage/load compartment floor, Without backrest release for front seats, Head restraint for front seat, Part-leather door and side trim panel, Unsplit rear seat bench- split folding backrest- with center armrest, Power seat adjustment with memory feature for left seat- right seat manually height-adjustable, 3-point seat belts- front, Black roof rails, Three rear head restraints, Without additional noise suppression measures for passenger compartment, 3-point seat belts- outer rear with ECE label, Front license plate carrier (large), Seat heater for front seats separately controlled, Emission standard EU6 AP, Without seat ventilation/massage seat, Tailgate/trunk lid unlocking from outside, Heat-reflecting windshield, Side windows in heat-insulating glass- from B-pillar and rear window dark tinted, With emergency steering support with turn assist, Keyless locking and starting system Keyless Advanced without SAFELOCK, Breakaway interior rearview mirror- auto-dimming, Rear floor panel module- type 1, Power windows with comfort operation and circuit breaker, Airbag on driver and front passenger side- knee airbag on driver/front pass. side- with front pass. airbag deactivated., Luggage pockets on backrest, Black decorative trims, Luggage compartment trim- with storage compartments, Without special body measures, UWB-capable country and carrier frequency- 433.92 to 434.42 MHz, Exterior mirrors: convex on driver side- convex on front passenger side, Rear spoiler, Without surface protection- with additional transport protection measures, Decorative inserts, Sun visors with mirror- illuminated- with airbag label on sun visor and B-pillar, Without fire extinguisher, Side airbag in front and rear- with curtain airbag and interaction airbag in front, Center armrest in front, Exterior mirror housings painted, Emblems, Lane keeping system, Unsplit molded headliner, Without gearshift knob/handle, Exterior mirrors with memory feature- power-folding/adjustable- separately heated, Electronic immobilizer, Without socket, Without heat accumulator/auxiliary heater, Without preparation for VTS (vehicle tracking system), Freely programmable instrument cluster Medium, Tire pressure monitoring system, Start-stop system with regenerative braking, Power-adjustable lumbar support for left front seat, Without CD/DVD for navigation, Without navigation device, With extended safety system (proactive passenger protection system- basic and front), Park assist, Without lane change assist, Without mode 3 charging cable, Optional infotainment system (MIB3), Without second battery, Alternator 140 A, Matrix beam, LED headlamps with variable light distribution, Forward collision warning with warning and braking reaction to vehicles- pedestrians and cyclists, Rear window wiper and washer system with intermittent control, Windshield wiper intermittent control with light/rain sensor, Dynamic headlight range control (self-adjusting while driving), Speakers in front and rear, Two reading lights in front- two in rear, Rear fog lamp, Adaptive cruise control (with "follow-to-stop") and speed limiter, LED rear combination lamp- dynamic turn signal, Front fog lamps, Without headlamp washer system- without washer fluid level indicator, Single-tone horn, Antenna for FM reception only- diversity, Not hot country, Tires 245/40 R19 94W super-low rolling resistance- generation 2, Comfort telephony with LTE and wireless charging, Separate daytime running light with automatic headlight control and automat. Coming and Leaving Home feature, Non-smoker's package, Without auxiliary heater/parking heater, Visual and acoustic seat belt reminder- electric contact in front and rear, Without heated washer nozzles, Mirror Link plus Wireless "App" plus RSE (preparation), 230-V inverter and outlet for Europe, Equipment options subset for Denmark

PICTURES



Picture viewer: <https://fm.bilsalg.dk/business/picturebrowser?t=full&guid=bc07c211-1d24-4e14-9bea-657520f00e9a&carid=20845012>

OVERVIEW OF DAMAGES AND SHORTAGES

N°	LOCATION	TYPE	SEVERITY	INSURANCE	NOTES	DAMAGE GROUP
1	Spare Tyre	Scratch	C4		Reporting needed Ridser på 2 alufælge	
						

Severity explanation:

C0 = No damage / C1 = Simple preparation / C2 = Minor preparation needed / C3 = Can be smart repaired / C4 = Repair/spray paint / C5 = Need replacement

ELECTRICAL AND MECHANICAL CONDITION

N°	LOCATION	TYPE	NOTES
1	Is the car drivable	Yes	