

VEHICLE DESCRIPTION - Škoda Scala Ambition 1.0 TSI



First registration date:
7/2023

VIN:
TMBER7NW1P3073548

Colour:
Gray Metallic Normal gloss

Mileage (km):
48.058

Gear:
Manual (6 Gears)

Fuel type:
Gasoline

Body type:
Hatchback

Number of doors:
5

Drive type:
FWD

Model year:
2018-2024

Engine power:
81 kW

Number of seats:
5

Engine size (cc):
999

Interior:
Black Fabric

VEHICLE DETAILS

Number of keys:
2

Number of license plates:
2

Registration certificate:
Part 1 & 2 present

Service documentation:
Yes

Inspection date:
15-04-2026

Last service (year/month):
2025/5


Mileage (km) at last service:
30.005

SUMMARY OF THE VEHICLE'S CONDITION

Is the car in a driveable condition:
Yes

Legal tire tread (minimum 1.6 mm):
Yes

WHEELS

 TYPE	SEASON	BRAND	POSITION	RIM	SIZE	TREAD
Fitted	Summer tires		Front Left	Steel rim	16"	4 mm
Fitted	Summer tires		Rear Right	Steel rim	16"	4 mm
Fitted	Summer tires		Rear Left	Steel rim	16"	4 mm
Fitted	Summer tires		Front Right	Steel rim	16"	4 mm

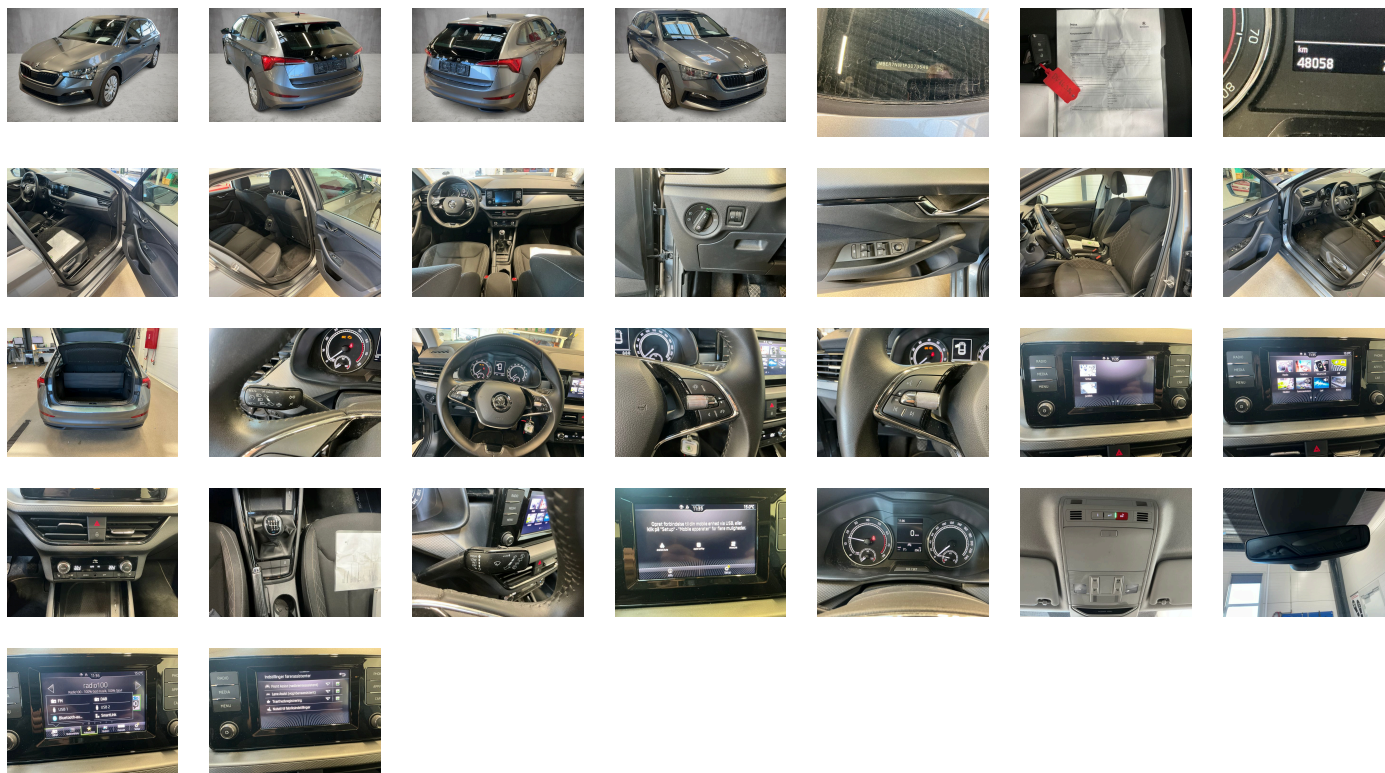
Legal tire tread (minimum 1.6 mm):

Yes

ACCESSORIES





Driving on the right, Standard version, Ambition, Part set without country-specific prescriptive standard, Type approval country Denmark, Operating permit-alteration, Steel wheels 6jx16" ET 40 "Tecton", 3-cylinder SI engine 1.0 l/81 kW TSI base engine is TJ4/TC5, Without ECO function, Remote Access / Pro-active service, Driver alert system, Regional code " ECE " for radio, No special edition, Standard paint coating, Variant, No special purpose vehicle- standard equipment, 6-speed manual transmission, Shock absorption in front, Tires 205/55 R16 91V super-low rolling resistance, Without bracket, Curb weight range 1, Rear axle weight- type 1, Radio Swing 6-5", Battery 380 A (59 Ah) EFB+, Without camera systems/accident sensors, Refrigerant R1234yf, With trim panel, Spaceback, Left-hand drive, Suspension range 05 installation control only- no requirement forecast, Without adapter, With umbrella, Emergency call system eCall+, Seat Ambition, LongLife Service Regime, Without voice control, Service indicator 30 000 km or 2 years (variable), Black Piano, With multifunction camera, Without drawers under front seats, Without add. lights (interior lighting), Without dynamic road sign display, DAB - Digital radio reception, Standard Seats, 3-cylinder SI engine 1.0 l unit 05C.A, Hill hold control, Instrument cluster- km/h speedometer, 2 USB Typ-C vorne, Standard pedal cluster, Extended and proactive pedestrian and cyclist protection, Tires without specification of tire brand, Care connect 1 year, Front stabilizer bar, 4 doors, Wheelbase, Installation differentiation for transmission MQ 200_GA -- vehicle components --, Standard manufacturing sequence, Without alternative drive system, Nameplate set in basic style, Standard rear axle, Without electronic steering column lock, Without floor mats, Manual in Danish, Weight range 12 installation control only- no requirement forecast, Standard climatic zones, Rear overhang-medium, Electronic stability control (ESC), Fuel system for fuel-injected SI engine (tropicalized), Antifreeze up to -25 degree Celsius tolerance up to -30 degree C, Trailer hitch preparation, Special identification label for EC for M1 passenger vehicles, Activated carbon canister (Evaporative Emission Control System (EVAP)), Breakdown kit, Rear shock absorption- basic version 1, Disc brakes in rear (Geomet D), Steel wheels cover Tecton 16", Power steering, Standard wheel bolts, Additional front underbody guard, Tool kit, Without folding table on front seat backrest, Without refrigerator/glove compartment cooling system, Front-wheel drive, Disc brakes in front (Geomet D), Initial standard fuel filling, Without delivery equipment, Additional exterior noise suppression, Axial and vertical adjustable steering column, Without "drive select", Body-colored bumpers, Fresh air intake system with combinationfilter, Multi-function steering wheel, Child seat anchors f. child seat system i-Size- 2x top tether and child seat anchors in front on front passenger side, Without partition, 3-point seat belt for center rear seat, Center console, Without roof insert (standard roof), Without luggage/load compartment floor, Without backrest release for front seats, Hight-adjustable head restraints for front seats, Door panels with upholstery, Manual height adjustment for front seats, Unsplit rear seat bench- split folding backrest, Mounting fixture in luggage compartment, 3-point seat belts in front- with tensioner and height adjustment, Three rear head restraints, Long rear window with spoiler, Without roof rails/roof load rack, Luggage compartment cover, Without additional noise suppression measures for passenger compartment, 3-point seat belts- outer rear with ECE label, Seat heater for front seats separately controlled, Emission standard EU6 AP, Without protective side molding, Tailgate without electrical opening, Heat-reflecting windshield, Central locking w/ radio remote control-interior controls- without SAFELOCK, Side and rear windows in heat-insulatingglass, Breakaway interior rearview mirror- auto-dimming, Rear floor panel module- type 3, Power windows with comfort operation andcircuit breaker, Driver knee airbag, Side airbag in front with curtain airbag, Without waste bin, Standard decorative trims, Glove compartment door with light, Carrier frequency 433.92 MHz-434.42 Mhz, Transport protection film with additional transport protection measures, Decorative inserts Grained Black, Right exterior mirror- convex, Left exterior mirror- convex, Sun visors with mirror and airbag label on front passenger side, Without fire extinguisher, Without additional side body covers (stone guard), Center armrest in front "Jumbo Box", Outside door mirrors and door handles inbody color, Without decorative films/emblems, Spurhalte assist, Radiator grille with chrome molding, "FRONT ASSIST" - radar scan.of the spacein front of the car- incl.City ANB- without "ADAPTIVE CRUISE ASSISTANT", Interiorbars and air vents frame Black glossy, Luggage net, Grey ceiling, Gearshift knob/handle in leather, Without two-sided floor surface, Exterior mirrors- power-adjustable/ heated, Electronic immobilizer, Without socket, Without heat accumulator/auxiliary heater, Tire pressure monitoring system, Vehicle class differentiation -655-, Start-stop system with regenerative braking, Without protective film for scuff plate, Spectacle storage compartment/bracket, Manually adjustable lumbar support in front seats, Without navigation device, Without extended safety system, Without park distance control, Without lane change assist, Basic LED Headlights, Without second battery, Alternator 140 A, Without light control, Separate daytime running light with automatic headlight control and manual Coming and Leaving Home feature, Rear window wiper and washer system with intermittent control, Windshield wiper intermittent control with light sensor, Key for locking system with remote control, Headlight range control, 4 speakers (passive), Electronic cruise control + Speedlimiter, LED rear combination lamp- dynamic turn signal- special styling, Front fog lamps, Without washer fluid level indicator, Without headlamp washer system, Single-tone horn, Antenna for FM reception only- diversity, Not hot country, Climatronic with impact pressure control- CFC-free, Without additional malfunction display, Non-smoker's package, Without auxiliary heater/parking heater, Visual and acoustic seat belt reminder- electric contact, Boardcomputer Maxidot, Heated washer nozzles in front, Without "Multimedia" in vehicle, Bluetooth, Equipment options subset for Denmark

PICTURES



Picture viewer: <https://fm.bilsalg.dk/business/picturebrowser?t=full&guid=8a4e0a57-59c6-47e0-bd2e-d5b2cbfcd0f5&carid=20844955>

OVERVIEW OF DAMAGES AND SHORTAGES

N°	LOCATION	TYPE	SEVERITY	INSURANCE	NOTES	DAMAGE GROUP
1	Front Windscreen	Stone Chips	C5		Reporting needed	
						
2	L. Roof Pillar, B-Pillar	Scratch	C4		Reporting needed	Group 1
3	L. Roof Pillar, B-Pillar	Dent	C4		Reporting needed Indvendig	
						

Severity explanation:

C0 = No damage / C1 = Simple preparation / C2 = Minor preparation needed / C3 = Can be smart repaired / C4 = Repair/spray paint / C5 = Need replacement

ELECTRICAL AND MECHANICAL CONDITION

N°	LOCATION	TYPE	NOTES
1	Is the car drivable	Yes	