

**VEHICLE DESCRIPTION - Cupra Formentor High 2.0 TSI**



**First registration date:**  
7/2023

**VIN:**  
VSSZZK3RR003581

**Colour:**  
null Normal gloss

**Mileage (km):**  
32.940

**Gear:**  
Automatic (7 Gears)

**Fuel type:**  
Gasoline

**Body type:**  
SUV

**Number of doors:**  
5

**Drive type:**  
4WD

**Model year:**  
2020-2024

**Engine power:**  
140 kW

**Number of seats:**  
5

**Engine size (cc):**  
1984

**Interior:**  
Black Partial leatherette

**VEHICLE DETAILS**

**Number of keys:**  
2

**Number of license plates:**  
2

**Registration certificate:**  
Part 1 & 2 present

**Service documentation:**  
Yes

**Inspection date:**  
22-04-2026

**Last service (year/month):**  
2025/7


**Mileage (km) at last service:**  
24.209

**SUMMARY OF THE VEHICLE'S CONDITION**

**Is the car in a driveable condition:**  
Yes

**Legal tire tread (minimum 1.6 mm):**  
Yes

## WHEELS

 TYPE	SEASON	BRAND	POSITION	RIM	SIZE	TREAD
Fitted	All year tires		Front Left	Alloy rim	18"	5 mm
Fitted	All year tires		Rear Right	Alloy rim	18"	5 mm
Fitted	All year tires		Rear Left	Alloy rim	18"	5 mm
Fitted	All year tires		Front Right	Alloy rim	18"	5 mm

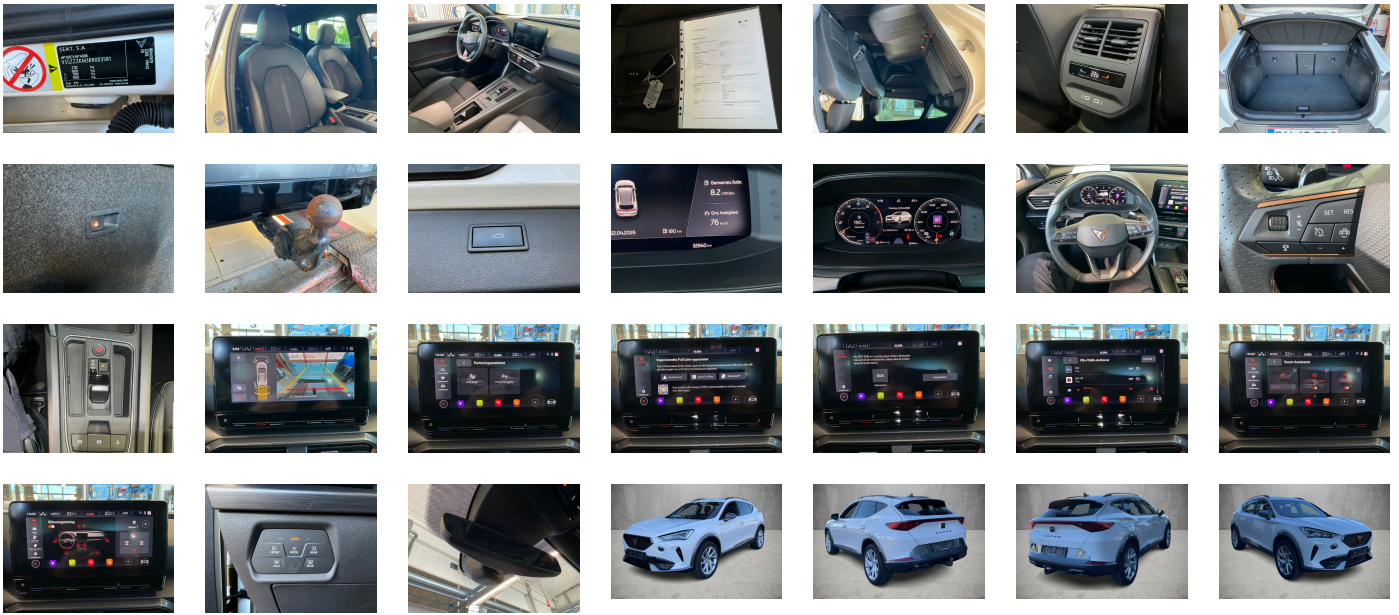
**Legal tire tread (minimum 1.6 mm):**

Yes

## ACCESSORIES

Trailer hitch aftermarket equipment- power-folding, Driving on the right, In-plant control of self-collection, Comfort sports equipment Formentor, Part set without country-specific prescriptive standard, Type approval country Denmark, Alloy wheels 8J x 18, Operating permit- alteration, 4-cyl. gasoline engine 2.0 I/140 kW-homogeneous- base engine: T06/T2C/T2J/ T2W/T3I/T4U/T50/T5H/T6E/T8J/TD3/T5V- TSI, Online service- with OCU- without head unit coding- without engine immobilizer interconnection, Driver alert system, Regional code " ECE " for radio, Without charging cable, No special edition, Control of series production, Without customized installation, Basic equipment variant, No special purpose vehicle- standard equipment, Without antenna amplifier, Standard electronic engine sound, Vehicles without special upgrade measures, Without Car2X, Shock absorption in front, 7-speed automatic transmission- four- wheel drive A7A, Battery 420 A (70 Ah), Tires 245/45 R18 96W super-low rolling resistance- generation 2 (polymer coating), With rear view camera system (type 2), Climatronic (3-zone) with air conditioning control panel in rear, Refrigerant R1234yf, Without head-up display, MPV Formentor, Left-hand drive, Suspension range 07 installation control only- no requirement forecast, Standard battery/alternator capacity, Pan-European emergency call service, Seat trim covers in fabric, Black interior (headliner), Sensor-controlled luggage compartment opening and closing, 18-inch spare wheel as temporary spare wheel, Parking steering assistant, BeatsAudio: premium speakers + subwoofer + 340-W amplifier + surround technology, Trailer hitch preparation, LongLife Service Regime, Voice control, Service indicator 30 000 km or 2 years ( variable ), Chrome package, With multifunction camera, Drawer under right front seat, Interior ambient lighting- type 1, Without dynamic road sign display, Digital radio reception, Standard seats in front, Decorative inserts for console, 4-cylinder SI engine 2.0 I unit 06Q.A 888evo4, Parking brake, Mechanical rear seat release, Instrument cluster- km/h speedometer, External- USB type C data socket(s) and charging socket(s), Standard pedal cluster, Standard electric, Scuff plates in door apertures (illuminated), Tires without specification of tire brand, Front stabilizer bar, Rear stabilizer bar, Wheelbase, Standard manufacturing sequence, Installation differentiation for transmission DQ381 -- vehicle components --, Without alternative drive system, Without nameplate set (without model designation), 4-link rear suspension, Rear exhaust tailpipe (standard), Without floor mats, Manual in Danish, Weight range 7 installation control only- no requirement forecast, Standard climatic zones, Without special specifications, Brake control system for vehicles without electric drive (ESC and electromechanical brake booster), Fuel system for fuel-injected SI engine, Special identification label for EC for M1 passenger vehicles, Activated carbon canister (Evaporative Emission Control System (EVAP)), Space-saving spare wheel for temporary use- radial tire (5-hole), Rear shock absorption- basic version 1, With welcome light (mirror), Disc brakes in rear, Dynamic steering, Wheel bolts with anti-theft protection (unlockable), Without mass damper for steering wheel, Without additional front underbody guard, Tool kit and jack, Without first aid kit and warning triangle, Four-wheel drive, Electronic differential lock XDS- dynamic traction support, Disc brakes in front, Initial standard fuel filling, Without delivery equipment, Vehicle class differentiation -5FF-, Leather-wrapped multi-function steering wheel- heated- with tiptronic, Without locking and starting systems, Driving profile selection and conventional shock absorber, Sports bumpers, Without additional tires, Type sign and company logo, Without electric motor (hybrid), Child seat anchors f. child seat system i-Size- 2x top tether and child seat anchors in front on front passenger side, Without partition, 3-point seat belt for center rear seat, Without roof insert (standard roof), Variable luggage/load compartment floor, Without backrest release for front seats, Part-leather door and side trim panel, Manual height adjustment for front seats, Unsplit rear seat bench- split folding backrest- with center armrest, 3-point seat belts- front, Black roof rails, Three rear head restraints, Without additional noise suppression measures for passenger compartment, 3-point seat belts- outer rear with ECE label, Front license plate carrier (large), Seat heater for front seats separately controlled, Emission standard EU6 AP, Without seat ventilation/massage seat, Sensor-controlled luggage compartment opener, Heat-reflecting windshield, With emergency steering support with turn assist, Side windows in heat-insulating glass- from B-pillar and rear window dark tinted, Keyless locking and starting system Keyless Advanced without SAFELOCK, Breakaway interior rearview mirror- auto-dimming, Rear floor panel module- type 1, Power windows with comfort operation and circuit breaker, Airbag on driver and front passenger side- knee airbag on driver/front pass. side- with front pass. airbag deactivated., Luggage pockets on backrest, Black decorative trims, Luggage compartment trim- with storage compartments, Without special body measures, UWB-capable country and carrier frequency- 433.92 to 434.42 MHz, Exterior mirrors: convex on driver side- convex on front passenger side, Rear spoiler, Front head restraints, Without surface protection- with additional transport protection measures, Decorative inserts, Sun visors with mirror- illuminated- with airbag label on sun visor and B-pillar, Without fire extinguisher, Side airbag in front and rear- with curtain airbag and interaction airbag in front, Center armrest in front, Exterior mirror housings painted, Emblems, Lane keeping system, Unsplit molded headliner, Without gearshift knob/handle, Exterior mirrors- power-folding/ adjustable- heated- w/ front passenger exterior mirror lowering function, Electronic immobilizer, Without socket, Without heat accumulator/auxiliary heater, Without preparation for VTS (vehicle tracking system), Freely programmable instrument cluster Medium, Tire pressure monitoring system, Start-stop system with regenerative braking, Manually adjustable lumbar support in front seats, Without CD/DVD for navigation, Without navigation device, With extended safety system (proactive passenger protection system- basic and front), Park assist, Without lane change assist, Without mode 3 charging cable, Optional infotainment system (MIB3), Without second battery, Alternator 140 A, High-beam control, LED headlamps with lens, Forward collision warning with warning and braking reaction to vehicles- pedestrians and cyclists, Rear window wiper and washer system with intermittent control, Windshield wiper intermittent control with light/rain sensor, Dynamic headlight range control (self-adjusting while driving), Two reading lights in front- two in rear, Rear fog lamp, Adaptive cruise control (with "follow-to-stop") and speed limiter, LED rear combination lamp- dynamic turn signal, Front fog lamps, Without headlamp washer system- without washer fluid level indicator, Single-tone horn, Antenna for FM reception only- diversity, Not hot country, Separate daytime running light with automatic headlight control and automat. Coming and Leaving Home feature, Non-smoker's package, Without auxiliary heater/parking heater, Visual and acoustic seat belt reminder- electric contact in front and rear, Without heated washer nozzles, Sound system with subwoofer "branded" design 2, Mirror Link plus Wireless "App" plus RSE (preparation), Mobile phone interface, 230-V inverter and outlet for Europe, Equipment options subset for Denmark

**PICTURES**



**Picture viewer:** <https://fm.bilsalg.dk/business/picturebrowser?t=full&guid=731148c4-5fca-44c8-95ed-0eb06d523ca4&carid=20831326>

## OVERVIEW OF DAMAGES AND SHORTAGES

No damages or shortages

## ELECTRICAL AND MECHANICAL CONDITION

N° LOCATION	TYPE	NOTES
1	Is the car drivable	Yes