

VEHICLE DESCRIPTION - Seat León FR 1.5 eTSI MHEV



First registration date:
7/2023

VIN:
VSSZZKL1RR002727

Colour:
Red Normal gloss

Mileage (km):
19.350

Gear:
Automatic (7 Gears)

Fuel type:
Hybrid petrol

Body type:
Estate Wagon

Number of doors:
5

Drive type:
FWD

Model year:
2020

Engine power:
110 kW

Number of seats:
5

Engine size (cc):
1498

Interior:

VEHICLE DETAILS

Number of keys:
2

Number of license plates:
2

Registration certificate:
Part 1 present

Service documentation:
No

Inspection date:
05-06-2026

Last service (year/month):

Mileage (km) at last service:

SUMMARY OF THE VEHICLE'S CONDITION

Is the car in a driveable condition:
Yes

Legal tire tread (minimum 1.6 mm):
Yes

WHEELS

TYPE	SEASON	BRAND	POSITION	RIM	SIZE	TREAD
Fitted	Summer tires		Front Left	Alloy rim	17"	5 mm
Fitted	Summer tires		Rear Right	Alloy rim	17"	5 mm
Fitted	Summer tires		Rear Left	Alloy rim	17"	5 mm
Fitted	Summer tires		Front Right	Alloy rim	17"	5 mm

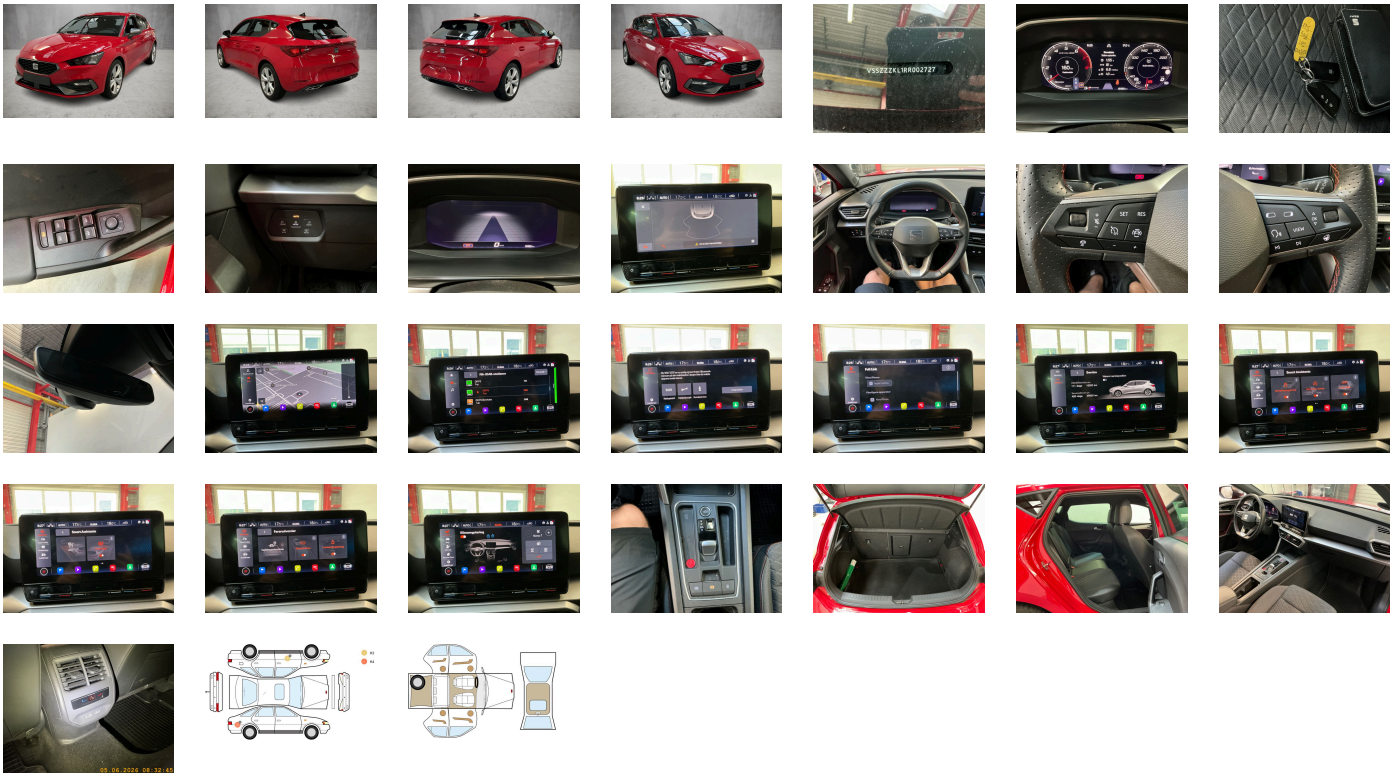
Legal tire tread (minimum 1.6 mm):

Yes

ACCESSORIES







Activated carbon canister (Evaporative Emission Control System (EVAP)), Antenna for FM reception only- diversity, Exterior mirrors- power-folding/adjustable- heated-w/ front passenger exterior mirror lowering function, Standard electronic engine sound, Exterior mirrors: convex on driver side- convex on front passenger side, Hybrid drive MHEV "eTSI", Front-wheel drive, Mirror Link plus Wireless "App" plus RSE (preparation), Exclusive sports equipment FR, Forward collision warning with warning and braking reaction to vehicles- pedestrians and cyclists, Disc brakes in rear, Battery 380 A (59 Ah) EFB+, Disc brakes in front (Geomet D), Exterior mirror housings painted, Standard battery/alternator capacity, Part set without country-specific prescriptive standard, Tool kit, Brake control system for vehicles with electric drive (ESC and electromechanical brake booster), Manual in Danish, Operating voltage 12 V, Without heated washer nozzles, Data storage device for EU- integrated, Driving profile selection and conventional shock absorber, Chrome package, Operating permit- alteration, Without Connect package 1, Without Car2X, Without roof rails/roof load rack, Without roof insert (standard roof), Rear shock absorption- sports version, Emblems, Shock absorption in front, Electronic differential lock XDS- dynamic traction support, Installation differentiation for transmission DQ200 -- vehicle components --, Electronic immobilizer, Decorative inserts for console, Scuff plates in door apertures (illuminated), Park distance control, Without extended safety system, External- USB type C data socket(s) and charging socket(s), Standard manufacturing sequence, Power windows with comfort operation and circuit breaker, Without fire extinguisher, Standard pedal cluster, Separate daytime running light with automatic headlight control and automat. Coming and Leaving Home feature, Parking brake, Without preparation for VTS (vehicle tracking system), No special purpose vehicle- standard equipment, Without additional noise suppression measures for passenger compartment, Belt-driven integrated starter alternator 48 V 110 - 250 A, Weight range 5 installation control only- no requirement forecast, Suspension range 13 installation control only- no requirement forecast, 4-cylinder SI engine 1.5 l unit 05E.A, Luggage pockets on backrest, Luggage compartment cover- folding, Adaptive cruise control (with "follow-to-stop") and speed limiter, Comfort luggage compartment trim, 7-speed automatic transmission "A7", Rear spoiler, Rear window wiper and washer system with intermittent control, Folding grab handles- multi-piece, Standard rear axle, Unsplit molded headliner, Unsplit rear seat bench- split folding backrest- with center armrest, Climatronic (3-zone) with air conditioning control panel in rear, LED headlamps, Without head-up display, Without electric motor (hybrid), Without customized installation, Instrument cluster- km/h speedometer, Standard dashboard, Breakaway interior rearview mirror- auto-dimming, Hatchback LEON 5 doors, With multifunction camera, Standard climatic zones, With dynamic road sign display, Without seat ventilation/massage seat, Three rear head restraints, Without antenna amplifier, Front head restraints, Initial standard fuel filling, Fuel system for fuel-injected SI engine, Without special body measures, Without camera systems/accident sensors, Refrigerant R1234yf, Front license plate carrier (large), Without surface protection- with additional transport protection measures, Without luggage/load compartment floor, Interior ambient lighting- type 1, Left-hand drive, Two reading lights in front- two in rear, Speed-related variable steering assist (Servotronic), Without backrest release for front seats, High-beam control, Without charging cable, Without mode 3 charging cable, Manually adjustable lumbar support in front seats, Leather-wrapped multi-function steering wheel- heated- with tiptronic, Driving on the right, Speakers in front and rear, Headlight range control, Center armrest in front, Basic equipment variant, Freely programmable instrument cluster Medium, Driver alert system, Not hot country, 4-cylinder gasoline engine 1.5 l/110 kW mild hybrid- TSI base engine: TJ7- eTSI, Navigation system - High, Rear fog lamp, Front fog lamps, Online service- with OCU- with head unit coding- without engine immobilizer interconnection, Vehicles without special upgrade measures, Rear floor panel module- type 1, Alloy wheels 7.5J x 17, Optional infotainment system (MIB3), Non-smoker's package, Regional code " ECE " for radio, Tire pressure monitoring system, Tires 225/45 R17 91W, Tires without specification of tire brand, Breakdown kit, Wheelbase, 3-point seat belts- front, Pan-European emergency call service, Side airbag in front with curtain airbag and interaction airbag in front, Without gearshift knob/handle, In-plant control of self-collection, LED rear combination lamp, Tailgate/trunk lid unlocking from outside, Service indicator 30 000 km or 2 years (variable), Without locking and starting systems, Visual and acoustic seat belt reminder- electric contact in front and rear, 3-point seat belts- outer rear with ECE label, 3-point seat belt for center rear seat, Seat trim covers in fabric, Manual height adjustment for front seats, Seat heater for front seats separately controlled, Start-stop system with regenerative braking, Single-tone horn, Sun visors with mirror- illuminated- with airbag label on sun visor and B-pillar, Voice control, Without lane change assist, Lane keeping system, Side windows in heat-insulating glass- from B-pillar and rear window dark tinted, Without special specifications, Without socket, Sports bumpers, Without rear stabilizer bar, Front stabilizer bar, Control of series production, Without drawers under front seats, Without headlamp washer system- without washer fluid level indicator, Windshield wiper intermittent control with light/rain sensor, Nameplate set in basic style, Without mass damper for steering wheel, Central locking system Keyless Go without SAFELock, Type approval country Denmark, UWB-capable country and carrier frequency- 433.92 to 434.42 MHz, Without partition, Vehicle class differentiation -5FN-, With emergency steering support with turn assist, No special edition, Standard wheel bolts, Without hill start assist/hill descent control/comfort driving assist, Emission standard EU6 AP, Without trailer hitch, Airbag on driver and front passenger side- without knee airbag- with front passenger airbag deactivation, Special identification label for EC for M1 passenger vehicles, Part-leather door and side trim panel, Digital radio reception, Without additional front underbody guard, Type sign and company logo, Without delivery equipment, Without first aid kit and warning triangle, Without surround lighting/welcome light (mirror), Standard seats in front, Standard rear seat release, Mobile phone interface, LongLife Service Regime, Without heat accumulator/auxiliary heater, Heat-reflecting windshield, Without second battery, Without additional tires, Without floor mats, Standard decorative trims, Without additional side body covers (stone guard), Child seat anchors f. child seat system i-Size- 2x top tether and child seat anchors in front on front passenger side, 48-V electric system, Without auxiliary heater/parking heater, Equipment options subset for Denmark

PICTURES



Picture viewer: <https://fm.bilsalg.dk/business/picturebrowser?t=full&guid=713cd201-9c6b-4baa-bde9-2947d749fa99&carid=20828723>

OVERVIEW OF DAMAGES AND SHORTAGES

N°	LOCATION	TYPE	SEVERITY	INSURANCE	NOTES	DAMAGE GROUP
1	R. Rear Quarter Panel	Dent	C4		Reporting needed	
						
2	L. Front door	Dent	C3			
						

Severity explanation:

C0 = No damage / C1 = Simple preparation / C2 = Minor preparation needed / C3 = Can be smart repaired / C4 = Repair/spray paint / C5 = Need replacement

ELECTRICAL AND MECHANICAL CONDITION

N°	LOCATION	TYPE	NOTES
1	Is the car drivable	Yes	