

VEHICLE DESCRIPTION - Audi A4 S Line Plus 2.0 40 TFSI MHEV



First registration date:
6/2023

VIN:
WAUZZZF44PA079640

Colour:
Gray Metallic Normal gloss

Mileage (km):
18.414

Gear:
Automatic (7 Gears)

Fuel type:
Hybrid petrol

Body type:
Estate Wagon

Number of doors:
5

Drive type:
FWD

Model year:
2019-2024

Engine power:
150 kW

Number of seats:
5

Engine size (cc):
1984

Interior:
Black Fabric

VEHICLE DETAILS

Number of keys:
2

Number of license plates:
2

Registration certificate:
Part 1 & 2 present

Service documentation:
No

Inspection date:
08-06-2026

Last service (year/month):

Mileage (km) at last service:

SUMMARY OF THE VEHICLE'S CONDITION

Is the car in a driveable condition:
Yes

Legal tire tread (minimum 1.6 mm):
Yes

WHEELS

 TYPE	SEASON	BRAND	POSITION	RIM	SIZE	TREAD
Fitted	Winter tires		Front Left	Steel rim	16"	6 mm
Fitted	Winter tires		Rear Right	Steel rim	16"	7 mm
Fitted	Winter tires		Rear Left	Steel rim	16"	7 mm
Fitted	Winter tires		Front Right	Steel rim	16"	6 mm
Extra Wheel	Summer tires		Rear Left	Alloy rim	18"	5 mm
Extra Wheel	Summer tires		Front Right	Alloy rim	18"	5 mm
Extra Wheel	Summer tires		Front Left	Alloy rim	18"	5 mm
Extra Wheel	Summer tires		Rear Right	Alloy rim	18"	5 mm

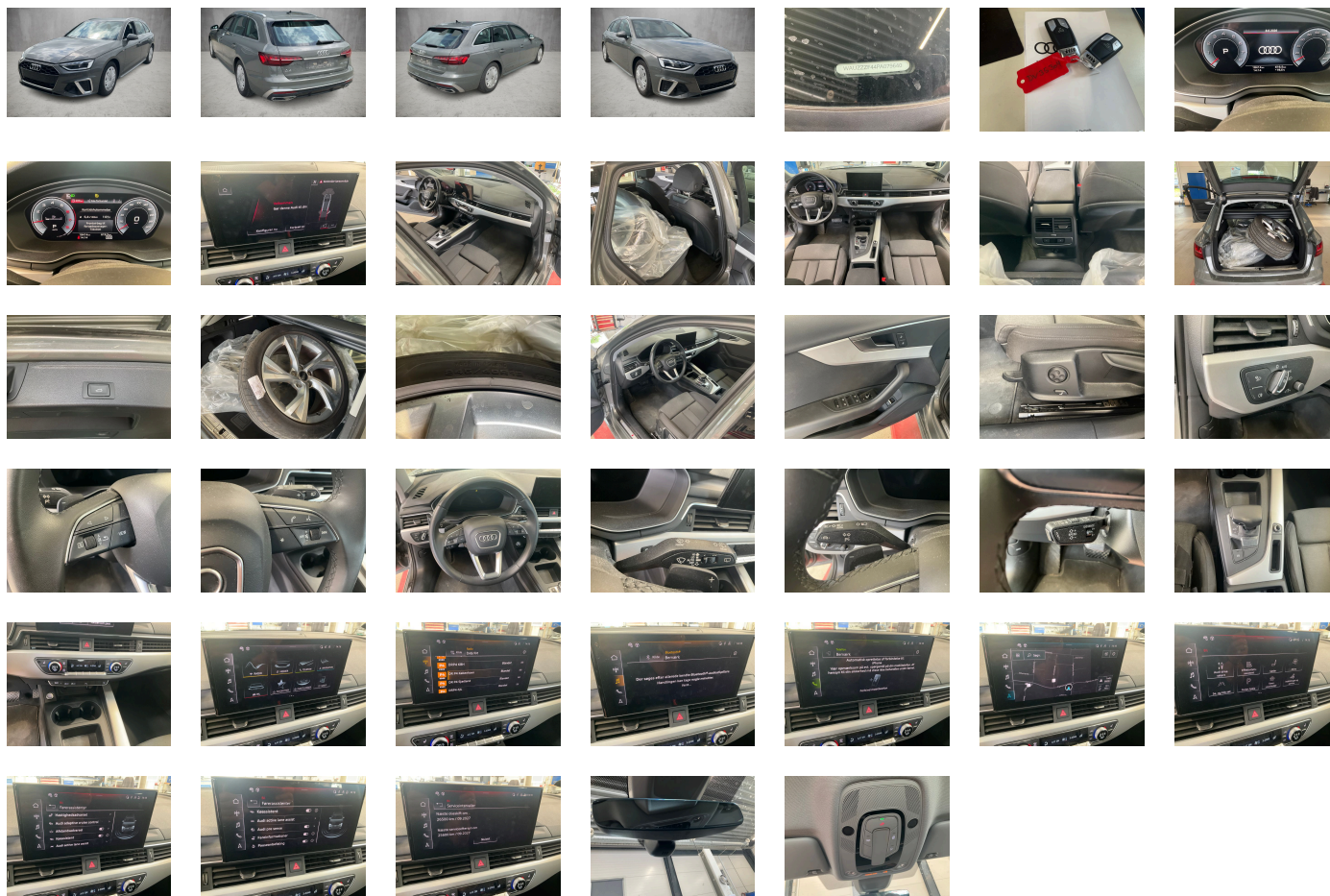
Legal tire tread (minimum 1.6 mm):

Yes

ACCESSORIES








Assist package Tour, LED headlights and LED rear lights with dynamic turn signal in rear, Equipment package for Denmark, Equipment package for Denmark, Internal control code, Internal control code, Internal control code, Internal control code, No special edition, Roof in body color, Standard wheel bolts, Vehicle class differentiation -8W0/8WA-, Standard exhaust system, Emission standard EU6 AP, Basic, Preparation for trailer hitch, Airbags- front, front passenger airbag can be deactivated, Without Storage package, Exterior mirrors- electrically adjustable and heated, Left exterior mirror- aspherical, Exterior mirrors on the right- (large field of view)- convex, Mild hybrid, Front-wheel drive, Without "Multimedia" in vehicle, S line, Audi pre sense city, Disk brakes- rear- 16-inch (ECE), Battery 380 A (68 Ah), Disk brakes- front- 16-inch (ECE), Exterior mirror housings in body color, Without special color trim, Standard battery/alternator capacity, Part set without country-specific prescriptive standard, Vehicle tool kit, Manual in Danish, Audi drive select, Operating permit- alteration, Standard, Audi connect navigation & infotainment, Preparation for smartphone interface, Data module- Europe, Audi connect emergency call & service with Audi connect remote & control, Without Car2X, Sport suspension, Roof rails in aluminum, Without roof insert (standard roof), Accent surfaces- Matt Black, Without decorative films/emblems, Insert for the filling up of unleaded fuel, Electronic immobilizer, Inlays- diamond paint finish- Silver Gray, Door sill trims with aluminum inlays- front- illuminated- S logo, Parking system plus, Without extended safety system, Standard manufacturing sequence, Without fire extinguisher, Extended pedestrian protection, Standard pedal cluster, Separate daytime running light, Preparation for functions on demand, Electromechanical parking brake, Without front spoiler, Without preparation for VTS (vehicle tracking system), No special purpose vehicle- standard equipment, Belt-driven integrated starter alternator 12 V- 130 - 200 A, tiptronic, Weight range 7 installation control only- no requirement forecast, Weight category front axle weight range 8, 4-cylinder SI engine 2.0 l unit 06N.A 888evo4, Audi adaptive cruise control, Without garage door opener, Luggage compartment trim (design 2), S tronic, Top speed limited to 210 km/h, Without rear differential, Rear trim panel (ECE), Audi AG, Without rear spoiler, Headlining in cloth in specific color, Split-folding rear seat backrest, 3-zone deluxe automatic air conditioning, LED headlights, Without head-up display, Instrument cluster- km/h speedometer, Interior mirror- automatically dimming- frameless, Wagon/Avant, With multifunction camera, Luggage compartment mat, Fuel tank with increased capacity, Child-proof lock, Standard climatic zones, Camera-based traffic sign recognition, Without seat ventilation/massage seat, Without antenna amplifier, Head restraints- front, Initial standard fuel filling, Top speed limited to 210 km/h, Fuel system for SI engine with direct injection (FSI), Without special body measures, Without child seat anchora in front (ISOFIX), Without camera systems/accident sensors, Refrigerant R1234yf, Front license plate carrier, Adhesive film, Loading floor, Interior lighting, Country group A, Left-hand drive, Electromechanical power steering, Without backrest release for front seats, High beam assistant, Lumbar support- pneumatically adjustable with massage function for the front seats, Leather steering wheel- 3-spoke with multifunction plus, Driving on the right, 8 loudspeakers, Without leather, Engine cover, Comfort center armrest- front, Basic equipment variant, Audi virtual cockpit plus, Not hot country, SI engine, 4-cyl. SI eng. 2.0 l/150 kW (16V) turbo FSI- homogen.- base eng. TR6/T2A/T2C/T3/T12/T66/T4X/T12/T5V/TC1/T1F/T4E/T4M, Without neck heating, MMI navigation plus with MMI touch, Seat belts in Black, Vehicles with special upgrade measures, Production wheels, Standard-production quality, Wheels- 5-Y-spoke- S design- 8.0J x 18- 245/40 R18 tires, Non-smoker version, Regional code " ECE " for radio, Tire pressure loss indicator, Tires with optimized rolling resistance- speed-limited- 245/40 R18, Tires without specification of tire brand, Tire repair kit, Side airbags- front and head airbag system, No self-collection, Labels in English and German, LED rear lights plus, Without AdBlue tank, Rear window- rear door and side windows in clear glass, Luggage compartment lid- electrically opening and closing, Service indicator 30 000 km or 2 years (variable), Bumpers- S line, Without locking and starting systems, Seat belt reminder, System cloth, Front seats- manually adjustable, Seat heating- front, With special labels safety certificates for Denmark, Start-stop system, Two-tone horn, Control (in-plant), Sun visors- front, Without lane change assist, Audi active lane assist, Rear and side windows with heat-insulating glazing, Without roll-up sunshade, Control of series production, Without headlamp washer system, Passenger car design, Body-colored door handles, Remote control key- without Safelock, Without integrated toll system, Type approval country Denmark, Carrier frequency 433.92 MHz-434.42 Mhz, Transit coating (type 1), Digital Audio Broadcasting, Installation parts for four-cylinder engine, Without additional front underbody guard, Special identification label (EU), Model name as per new output designation, First-aid kit with warning triangle and high-visibility vests, Without preconditioning, Sport seats- front, Audi phone box light, Without additional warning lights, Without wind deflector, Without heat accumulator/auxiliary heater, Windshield with heat-reflecting glass and acoustic glass, Without additional tires, Floor mats- front and rear, Gloss package, Additional stone guard body covers, ISOFIX child seat mounting and top tether for the outer rear seats, Without ignition/starter switch locking system- without steering lock, Standard electric, Without auxiliary heater/parking heater, Equipment options subset for Denmark

PICTURES



Picture viewer: <https://fm.bilsalg.dk/business/picturebrowser?t=full&guid=cbc74799-8c3a-4ac2-8fb9-6738cfc260d&carid=20716379>

OVERVIEW OF DAMAGES AND SHORTAGES

N°	LOCATION	TYPE	SEVERITY	INSURANCE	NOTES	DAMAGE GROUP
1	R. Rear Door  	Scratch	C4		Reporting needed	Group 1
2	R. Front Door, Handle  	Scratch	C4		Reporting needed	Group 1
3	R. Front Door  	Dent	C4		Reporting needed	Group 1
4	R. Front Door  	Scratch	C4		Reporting needed	Group 1

Severity explanation:

C0 = No damage / C1 = Simple preparation / C2 = Minor preparation needed / C3 = Can be smart repaired / C4 = Repair/spray paint / C5 = Need replacement

ELECTRICAL AND MECHANICAL CONDITION

N°	LOCATION	TYPE	NOTES
1	Is the car drivable	Yes	