

VEHICLE DESCRIPTION - VW T-ROC R Line Plus 1.5 TSI



First registration date: 6/2023	VIN: WVGZZA1ZPV678318
Colour: Black Metallic Normal gloss	Mileage (km): 87.194
Gear: Automatic (7 Gears)	Fuel type: Gasoline
Body type: SUV	Number of doors: 5
Drive type: FWD	Model year: 2021-2025
Engine power: 110 kW	Number of seats: 5
Engine size (cc): 1498	Interior: Dark grey Partial leatherette

VEHICLE DETAILS

Number of keys: 2	Number of license plates: 2	Registration certificate: Part 1 & 2 present	Service documentation: No
Inspection date: 29-06-2026	Last service (year/month):	Mileage (km) at last service:	

SUMMARY OF THE VEHICLE'S CONDITION

Is the car in a driveable condition: Yes	Legal tire tread (minimum 1.6 mm): Yes
--	--

WHEELS

 TYPE	SEASON	BRAND	POSITION	RIM	SIZE	TREAD
Fitted	Winter tires		Front Left	Alloy rim	16"	4 mm
Fitted	Winter tires		Front Right	Alloy rim	16"	5 mm
Fitted	Winter tires		Rear Right	Alloy rim	16"	5 mm
Fitted	Winter tires		Rear Left	Alloy rim	16"	4 mm
Extra Wheel	Summer tires		Rear Right	Alloy rim	18"	5 mm
Extra Wheel	Summer tires		Rear Left	Alloy rim	18"	5 mm
Extra Wheel	Summer tires		Front Left	Alloy rim	18"	5 mm
Extra Wheel	Summer tires		Front Right	Alloy rim	18"	5 mm

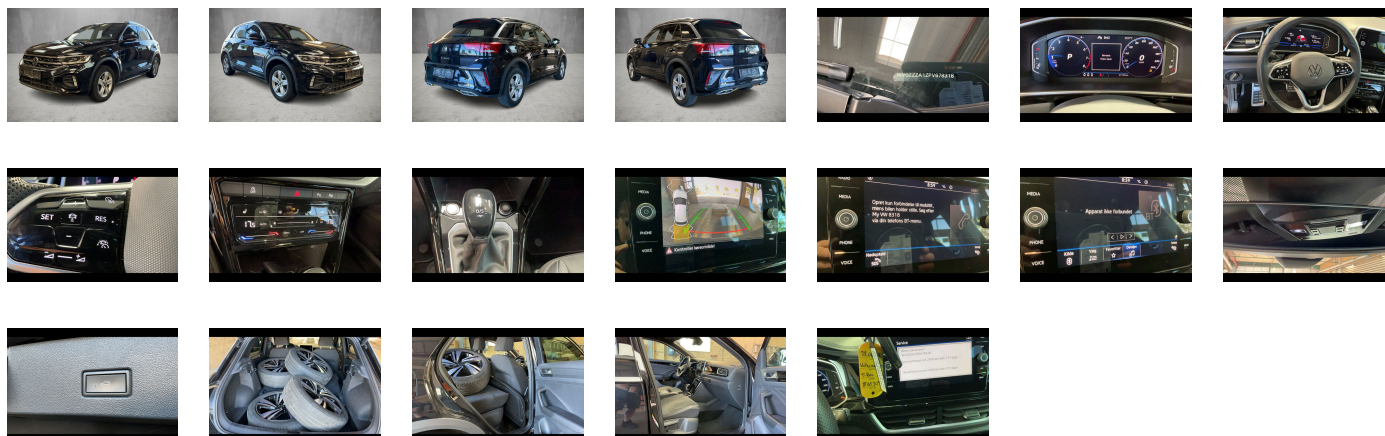
Legal tire tread (minimum 1.6 mm):

Yes

ACCESSORIES







4 doors, Front stabilizer bar, Wheelbase, Without rear stabilizer bar, Dual-clutch transmission DSG DQ200, Standard manufacturing sequence, Without alternative drive system, Without decals and emblems, Vehicle class differentiation -2GA-, Standard rear axle, Elimination of nameplate for engine designation on luggage compartment lid, Rear exhaust tailpipe (standard), Carpet mats in front and rear, Manual in Danish, Standard climatic zones, Weight range 4 installation control only- no requirement forecast, Fuel system for fuel-injected SI engine, Electronic Stability Control w/ driver steering recommendation- ABS- ASR- EDL- EDTC and trailer stabilization, Without trailer hitch, Activated carbon canister (Evaporative Emission Control System (EVAP)), Special identification label for EC for M1 passenger vehicles, Tire Mobility Set: 12-volt compressor and tire sealant, Surround lighting with welcome light, Electromechanical speed-sensitive power steering, Trims for alloy wheels, Wheel locks with extended theft protection, Tool kit, Without additional front underbody guard, Warning triangle, Without folding table on front seat backrest, Elimination of cooling system of glove compartment, Front-wheel drive, Initial standard fuel filling, Disc brakes in front, Without electric motor (hybrid), Disc brakes in rear, Without Adaptive Chassis Control, Bumpers in "R-Line" style, Leather-wrapped multi-function sports steering wheel- heated- with touch control and shifting paddles, Without additional tires, ISOFIX anchorage points (mounting fixture for 2 child seats on rear bench seat), Without partition, Without roof insert (standard roof), Height-adjustable and removable luggage compartment floor, Completely folding front passenger seat backrest, Door and side trim panel in foam film- insert in leatherette, Asymmetric split folding rear seat backrest- with center armrest, Front seats with height adjustment- ergoActive driver seat with longitudinally adjustable thigh support, 3-point seat belts in front with height adjustment and seat belt pretensioners, Silver-anodized roof rails, 3 head restraints in rear, 3-point seat belts with seat belt pretensioners for the outer rear seats, Heated front seats, Emission standard EU6 AP, Laminated safety glass windshield- heat-insulating, Keyless locking and starting system Keyless Access without SAFELOCK, Privacy glass for rear side windows and rear window, Auto-dimming interior rearview mirror, Rear floor panel module- type 7, Power windows, Driver and front passenger airbag with front passenger airbag deactivation, Curtain airbag system for front and rear passengers incl. side airbags in front, Body-colored door lower parts, Without special body measures, Carrier frequency 433.92 MHz-434.42 MHz, Easy Open & Close - sensor controlled luggage compartment opening and closing with remote unlocking, Exterior mirrors: aspherical on driver side- convex on front passenger side, Transport protection film (minimum protection) with additional transport protection measures, Decorative inserts "Lava Stone Black" for dashboard-center console and front door trim panels, Illuminated vanity mirrors in sun visors, Safety-optimized front head restraints, Without fire extinguisher, Center armrest in front, Exterior mirror housings in roof color, Travel Assist- Lane Assist and Emergency Assist, Autonomous Emergency Braking Front Assist (for Adaptive Cruise Control ACC up to 210 km/h), Black headliner, Gearshift knob in leather, Light unit in front footwell, Exterior mirrors- power-adjustable- folding- and heated- with memory feature, Electronic immobilizer, Without socket, Without heat accumulator/auxiliary heater, Tire Pressure Monitoring System, Start-stop system with regenerative braking, Front scuff plates with "R-Line" logo, Preparation for subsequent activation: Navigation feature "Discover Media" incl. Streaming & Internet, Without extended safety system, Park Assist with Park Distance Control, Without lane change assist, Radio, High-beam control Light Assist, Alternator 140 A, Lumbar supports in front- power- adjustable on driver side- massage feature on driver side, LED Plus headlamps with LED separate daytime running light, Rear window wiper with intermittent control, Rain sensor, Dynamic headlight range control, 6 speakers, 2 LED reading lights in front and 2 in rear, Adaptive Cruise Control ACC stop & go incl. speed limiter, Rear fog light on one side- back-up light on both sides, Dark Red LED rear combination lamps, Warning lamp for washer fluid level, Cornering light and poor weather light, Without headlamp washer system, Single-tone horn, Not hot country, Diversity antenna for FM reception, Air Care Climatronic 2 zone automatic climate control with enhanced air filter with activated carbon, Without preparation for two-way radio installation, Automatic headlight control with LED separate daytime running light and exit and entry lighting, Non-smoker's package: Storage compartment and 12 V outlet in front, Without auxiliary heater/parking heater, Warning signal and warning lamp for front and rear seat belts not fastened, Multi-color Digital Cockpit Pro- selection of different info profiles possible, Automatically-heated washer nozzles in front, Retro-reflectors in all doors, Brake pad wear indicator, App-Connect incl. App-Connect Wireless for Apple CarPlay and Android Auto, Operating voltage 12 V, Mobile phone interface, R-line equipment, Driving on the right, Type approval country Denmark, Part set without country-specific prescriptive standard, Operating permit- alteration, 4 alloy wheels "Nevada" 7J x 18- Black- diamond-turned surface, 4-cylinder SI engine 1.5 l TSI- 110 kW, No special edition, Without ECO function, Online service- with OCU- with head unit coding- without engine immobilizer interconnection, Driver alert system, Regional code " ECE " for radio, Without vehicle inlet, Without charging cable, No special purpose vehicle- standard equipment, Standard paint coating, Basic equipment variant, Shock absorption in front, 7-speed automatic transmission or dual-clutch transmission DSG- note: PR family EDF, Electronic engine sound, Vehicles with special upgrade measures, Battery 380 A (59 Ah) EFB+, Hatchback, Rear view camera system, Refrigerant R1234yf, Suspension range 03 installation control only- no requirement forecast, Left-hand drive, 4-cylinder SI engine 1.5 l unit 05E.D, Inserts of front seats and outer rear seats in ArtVelours microfleece, Standard battery/alternator capacity, Emergency call service, no registration required- service is activated upon delivery, Seat Comfort package incl. ergoActive seat on driver side, Easy Open package without SAFELOCK, "Nevada" 7J x 18- Black- diamond-turned- tires 215/50 R18, LED Plus headlamps, Tires 215/50 R18, Sports comfort seats in front, LongLife Service Regime, Without voice control, Service indicator 30 000 km or 2 years (variable), Chrome elements on rotary light switch- power mirror switch- window regulator switches, vents with chrome frames, Multifunction camera, Drawer under right front seat, White ambient lighting, Without dynamic road sign display, Digital radio reception DAB+, Radio "Ready 2 Discover" incl. "Streaming & Internet", Control of campaigns, Equipment change, Instrument cluster with electronic speedometer- odometer and trip odometer- tachometer, 2 USB-C ports in the front- 2 USB-C charging sockets on the center console in rear- charging capacity up to 45 W, Rear shock absorption- chassis with increased ride height, Without exterior ambient lighting, Hill start assist, Electromechanical parking brake with Auto Hold function, Tires without specification of tire brand, Pedals in brushed stainless steel, Pedestrian Monitoring, VE: IQ.DRIVE package without proactive passenger protection system forces SW9, No German text in language code de_VW, Preparation for We Connect and We Connect Plus, Equipment options subset for Denmark

PICTURES



Picture viewer: <https://fm.bilsalg.dk/business/picturebrowser?t=full&guid=fc2ba83d-d00a-4513-b5e4-e9a43fd96a0c&carid=20702283>

OVERVIEW OF DAMAGES AND SHORTAGES

N°	LOCATION	TYPE	SEVERITY	INSURANCE	NOTES	DAMAGE GROUP
1	Hood	Scratch	C4		Reporting needed	
						
2	Front Bumper	Scratch	C4		Reporting needed	
						
3	R. Front Quarter Panel	Dent	C3			
						

Severity explanation:

C0 = No damage / C1 = Simple preparation / C2 = Minor preparation needed / C3 = Can be smart repaired / C4 = Repair/spray paint / C5 = Need replacement

ELECTRICAL AND MECHANICAL CONDITION

N°	LOCATION	TYPE	NOTES
1	Is the car drivable	Yes	