

VEHICLE DESCRIPTION - VW T-ROC R Line 1.5 TSI



First registration date: 6/2023	VIN: WVGZZA1ZPK009889
Colour: White Normal gloss	Mileage (km): 51.194
Gear: Automatic (7 Gears)	Fuel type: Gasoline
Body type: Cabriolet	Number of doors: 2
Drive type: FWD	Model year: 2021-2025
Engine power: 110 kW	Number of seats: 4
Engine size (cc): 1498	Interior: Dark grey Partial leatherette

VEHICLE DETAILS

Number of keys: 2	Number of license plates: 2	Registration certificate: Part 1 & 2 present	Service documentation: No
Inspection date: 18-05-2026	Last service (year/month):	Mileage (km) at last service:	

SUMMARY OF THE VEHICLE'S CONDITION

Is the car in a driveable condition: Yes	Legal tire tread (minimum 1.6 mm): Yes
--	--

WHEELS

 TYPE	SEASON	BRAND	POSITION	RIM	SIZE	TREAD
Fitted	Summer tires		Rear Left	Alloy rim	19"	6 mm
Fitted	Summer tires		Front Right	Alloy rim	19"	6 mm
Fitted	Summer tires		Front Left	Alloy rim	19"	6 mm
Fitted	Summer tires		Rear Right	Alloy rim	19"	6 mm
Extra Wheel	Winter tires		Rear Left	Steel rim	16"	7 mm
Extra Wheel	Winter tires		Front Right	Steel rim	16"	7 mm
Extra Wheel	Winter tires		Front Left	Steel rim	16"	7 mm
Extra Wheel	Winter tires		Rear Right	Steel rim	16"	7 mm

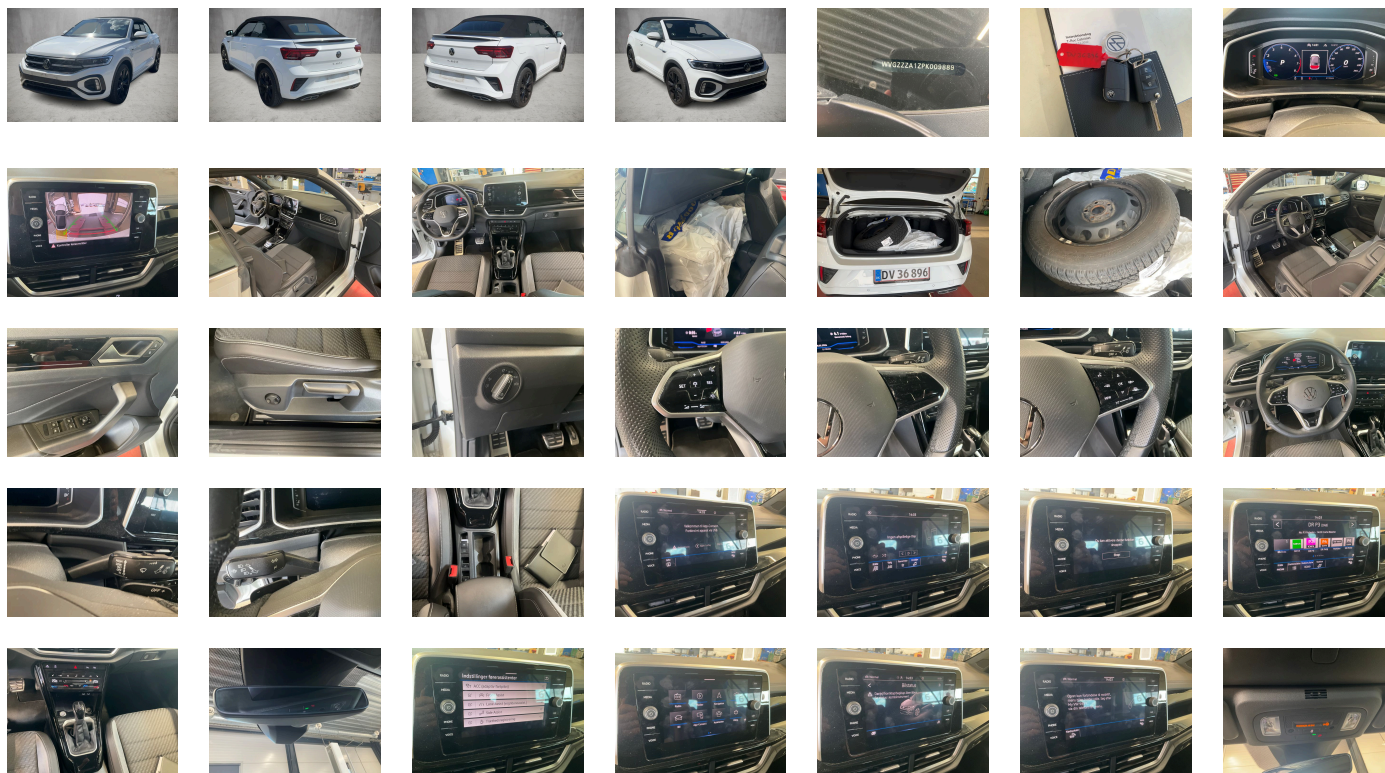
Legal tire tread (minimum 1.6 mm):

Yes

ACCESSORIES







Driving on the right, R-line equipment, Part set without country-specific prescriptive standard, Type approval country Denmark, Operating permit- alteration, 4 alloy wheels "Misano" 8J x 19- Black, 4-cylinder SI engine 1.5 l TSI- 110 kW, ECO function, Online service- with OCU- with head unit coding- without engine immobilizer interconnection, Driver alert system, Regional code " ECE " for radio, Without vehicle inlet, Without charging cable, No special edition, Standard paint coating, Basic equipment variant, No special purpose vehicle- standard equipment, Electronic engine sound, Vehicles with special upgrade measures, Shock absorption in front, 7-speed automatic transmission or dual-clutch transmission DSG- note: PR family EDF, Tires 225/40 R19, Battery 380 A (59 Ah) EFB+, Rear view camera system, Refrigerant R1234yf, Cabriolet, Left-hand drive, Suspension range 15 installation control only- no requirement forecast, Standard battery/alternator capacity, Emergency call service, no registration required- service is activated upon delivery, Inserts in fabric "R-Line"- inner sides of bolsters in ArtVelours microfleece, 4-cylinder SI engine 1.5 l unit 05E.D, "Misano" 8J x 19- Black- tires 225/40 R19, LED performance headlamps, LongLife Service Regime, Without voice control, Service indicator 30 000 km or 2 years (variable), Chrome elements on rotary light switch- power mirror switch- window regulator switches, vents with chrome frames, Multifunction camera, White ambient lighting, Without dynamic road sign display, Digital radio reception DAB+, Sports comfort seats in front, Radio "Ready 2 Discover" incl. "Streaming & Internet", Equipment change, Without exterior ambient lighting, Electromechanical parking brake with Auto Hold function, Pedestrian Monitoring, Instrument cluster with electronic speedometer- odometer and trip odometer- tachometer, 2 USB-C ports in the front- 2 USB-C charging sockets on the center console in rear- charging capacity up to 45 W, Pedals in brushed stainless steel, Winter package, Denmark: Denmark package A8C forces KA1-4I3-7P1 A9I forces KA1-4I3-9IJ, VE: Driver Assistance package without 7W4 forces SW9, Preparation for We Connect and We Connect Plus, 2 doors, Rear stabilizer bar, Wheelbase, Dual-clutch transmission DSG DQ200, Standard manufacturing sequence, Without alternative drive system, Vehicle class differentiation -2GK-, Four-link suspension, Rear exhaust tailpipe (standard), Carpet mats in front and rear, Manual in Danish, Weight range 4 installation control only- no requirement forecast, Standard climatic zones, Electronic Stability Control w/ driver steering recommendation- ABS- ASR- EDL- EDTC and trailer stabilization, Fuel system for fuel-injected SI engine, Without trailer hitch, Special identification label for EC for M1 passenger vehicles, Activated carbon canister (Evaporative Emission Control System (EVAP)), Tire Mobility Set: 12-volt compressor and tire sealant, Sports suspension, Surround lighting with welcome light, Trims for alloy wheels, Progressive steering, Wheel locks with extended theft protection, Without additional front underbody guard, Tool kit, Warning triangle, Without folding table on front seat backrest, Elimination of cooling system of glove compartment, Front-wheel drive, Disc brakes in front, Initial standard fuel filling, Disc brakes in rear, Driving Mode Selection, Bumpers in "R" style, Leather-wrapped multi-function sports steering wheel- heated- with touch control and shifting paddles, Without additional tires, Without electric motor (hybrid), ISOFIX anchorage points (mounting fixture for 2 child seats on rear bench seat), Without partition, Electro-hydraulic fabric convertible top, Entry aid Easy Entry, Symmetrically split-folding rear seat backrest, Door and side trim panel in foam film- insert in leatherette, Front seats with height adjustment, Rear head restraints, 2-point seat belts with seat belt pretensioners in rear, Heated front seats, Emission standard EU6 AP, Tailgate/trunk lid unlocking from outside, Laminated safety glass windshield- heat-insulating, Keyless locking and starting system Keyless Access without SAFELock, Rear floor panel module- type 2, Power windows, Driver and front passenger airbag with front passenger airbag deactivation, Combined curtain and side airbags in front, Black door lower parts- with chrome trim, Without special body measures, Carrier frequency 433.92 MHz-434.42 Mhz, Exterior mirrors: aspherical on driver side- convex on front passenger side, Transport protection film (minimum protection) with additional transport protection measures, Decorative inserts "Lava Stone Black" for dashboard- center console and front door trim panels, Illuminated vanity mirrors in sun visors, Safety-optimized front head restraints, Center armrest in front, Body-colored exterior mirror housings and door handles, Travel Assist- Lane Assist and Emergency Assist, Autonomous Emergency Braking Front Assist (for Adaptive Cruise Control ACC up to 210 km/h), Exterior mirrors- power-adjustable- folding and heated- with memory feature, Electronic immobilizer, Without heat accumulator/auxiliary heater, Tire Pressure Monitoring System, Start-stop system with regenerative braking, Front scuff plates with "R-Line" logo, Power-adjustable lumbar supports in front, Without CD/DVD for navigation, Wind deflector, Preparation for subsequent activation: Navigation feature "Discover Media" incl. Streaming & Internet, Without extended safety system, Park Assist with Park Distance Control, Lane change system Side Assist, Radio, Alternator 140 A, High-beam control Light Assist, LED Plus headlamps with LED separate daytime running light, Rain sensor, Dynamic headlight range control, 6 speakers, Rear fog light on one side- back-up light on both sides, Adaptive Cruise Control ACC stop & go incl. speed limiter, Dark Red LED rear combination lamps, Cornering light and poor weather light, Warning lamp for washer fluid level, Without headlamp washer system, Single-tone horn, Diversity antenna for FM reception, Not hot country, Air Care Climatronic 2 zone automatic climate control with enhanced air filter with activated carbon, Without preparation for two-way radio installation, Mobile phone interface "Comfort" with inductive charging feature, Automatic headlight control with LED separate daytime running light and exit and entry lighting, Multi-color Digital Cockpit Pro- selection of different info profiles possible, Non-smoker's package: Storage compartment and 12-V outlet in front, Without auxiliary heater/parking heater, Warning signal and warning lamp for front and rear seat belts not fastened, Automatically-heated washer nozzles in front, Brake pad wear indicator, App-Connect incl. App-Connect Wireless for Apple CarPlay and Android Auto, Operating voltage 12 V, Equipment options subset for Denmark

PICTURES



Picture viewer: <https://fm.bilsalg.dk/business/picturebrowser?t=full&guid=f95ad1e1-ea87-433b-9ed0-31465a11bf0d&carid=20655771>

OVERVIEW OF DAMAGES AND SHORTAGES

N°	LOCATION	TYPE	SEVERITY	INSURANCE	NOTES	DAMAGE GROUP
1	L. Rear Quarter Panel, List	Scratch	C5		Reporting needed	Group 1
						
2	Rear Bumper	Scratch	C4		Reporting needed	Group 1
						
3	L. Front Rim	Scratch	C4		Reporting needed	
						

Severity explanation:

C0 = No damage / C1 = Simple preparation / C2 = Minor preparation needed / C3 = Can be smart repaired / C4 = Repair/spray paint / C5 = Need replacement

ELECTRICAL AND MECHANICAL CONDITION

N°	LOCATION	TYPE	NOTES
1	Is the car drivable	Yes	