

**VEHICLE DESCRIPTION - Škoda Kamiq 1.0 TSI**



<b>First registration date:</b> 6/2023	<b>VIN:</b> TMBGR7NW3P3129191
<b>Colour:</b> Black Metallic Normal gloss	<b>Mileage (km):</b> 48.318
<b>Gear:</b> Manual (6 Gears)	<b>Fuel type:</b> Gasoline
<b>Body type:</b> SUV	<b>Number of doors:</b> 5
<b>Drive type:</b> FWD	<b>Model year:</b> 2019-2024
<b>Engine power:</b> 81 kW	<b>Number of seats:</b> 5
<b>Engine size (cc):</b> 999	<b>Interior:</b> Black Fabric

**VEHICLE DETAILS**

<b>Number of keys:</b> 2	<b>Number of license plates:</b> 2	<b>Registration certificate:</b> Part 1 & 2 present	<b>Service documentation:</b> Yes
<b>Inspection date:</b> 08-05-2026	<b>Last service (year/month):</b> 2025/4	<b>Mileage (km) at last service:</b> 30.679	

**SUMMARY OF THE VEHICLE'S CONDITION**

<b>Is the car in a driveable condition:</b> Yes	<b>Legal tire tread (minimum 1.6 mm):</b> Yes
--	--

## WHEELS

TYPE	SEASON	BRAND	POSITION	RIM	SIZE	TREAD
Fitted	Summer tires		Front Left	Alloy rim	16"	5 mm
Fitted	Summer tires		Rear Right	Alloy rim	16"	5 mm
Fitted	Summer tires		Rear Left	Alloy rim	16"	5 mm
Fitted	Summer tires		Front Right	Alloy rim	16"	5 mm

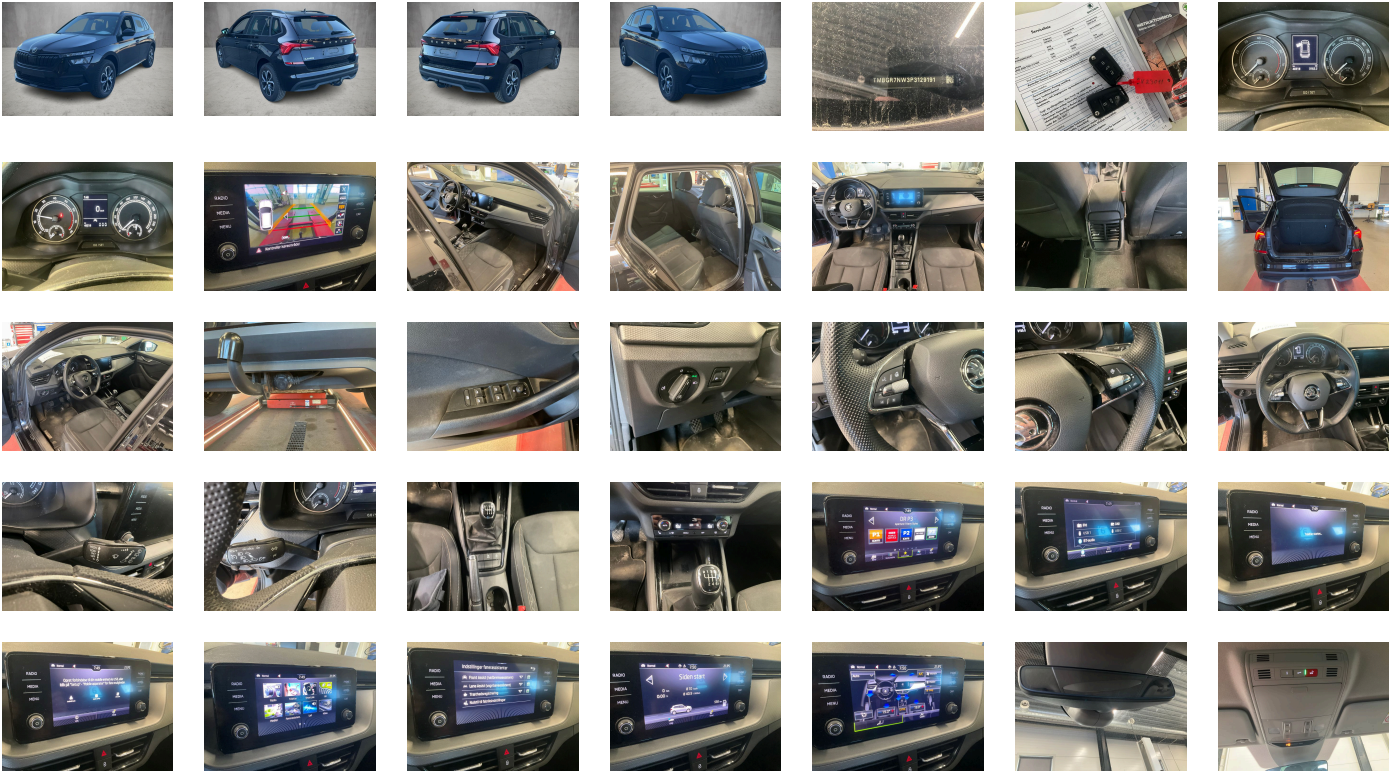
### Legal tire tread (minimum 1.6 mm):

Yes

## ACCESSORIES









Trailer hitch aftermarket equipment- removable and lockable, Driving on the right, "Standard Plus" version, Ambition, Part set without country-specific prescriptive standard, Type approval country Denmark, Operating permit- alteration, Alloy wheels 6J x 16" ET38 "Hoedus Aero", 3-cylinder SI engine 1.0 I/81 kW TSI base engine is TJ4/TC5, ECO function, Remote Access / Pro-active service, Driver alert system, Regional code " ECE " for radio, No special edition, Standard paint coating, Basic equipment variant, No special purpose vehicle- standard equipment, 6-speed manual transmission, Shock absorption in front, Tires 205/60 R16 92V, Without bracket, Curb weight range 1, Rear axle weight- type 1, Radio Bolero 8", Battery 380 A (59 Ah) EFB+, With rear view camera system (type 2), Refrigerant R1234yf, With trim panel, Crossover, Left-hand drive, Suspension range 24 installation control only- no requirement forecast, Without adapter, With umbrella, Emergency call system eCall+, Seat Ambition, Add-on parts on bumpers black grained- without sill covers, rear view camera system, 3-spoke sport multifunction leather heated steering wheel, LongLife Service Regime, Without voice control, Service indicator 30 000 km or 2 years ( variable ), Black Piano, With multifunction camera, Without drawers under front seats, Without add. lights (interior lighting), Without dynamic road sign display, DAB - Digital radio reception, Standard Seats, 3-cylinder SI engine 1.0 I unit 05C.A, Rear shock absorption, Without hill hold control, Instrument cluster- km/h speedometer, 2 USB Typ-C vorne, Standard pedal cluster, Extended and proactive pedestrian and cyclist protection, Tires without specification of tire brand, Dynamic package, Care connect 1 year, Front stabilizer bar, 4 doors, Wheelbase, Installation differentiation for transmission MQ 200\_GA -- vehicle components --, Standard manufacturing sequence, Without alternative drive system, Nameplate set in basic style, Standard rear axle, Without electronic steering column lock, Without floor mats, Manual in Danish, Weight range 12 installation control only- no requirement forecast, Standard climatic zones, Rear overhang- short, Electronic stability control (ESC), Fuel system for fuel-injected SI engine (tropicalized), Antifreeze up to -25 degree Celsius tolerance up to -30 degree C, Special identification label for EC for M1 passenger vehicles, Activated carbon canister (Evaporative Emission Control System (EVAP)), Breakdown kit, Disc brakes in rear (Geomet D), Trims for alloy wheels, Power steering, Standard wheel bolts, Additional front underbody guard, Tool kit, Without folding table on front seat backrest, Without refrigerator/glove compartment cooling system, Front-wheel drive, Disc brakes in front (Geomet D), Initial standard fuel filling, Without delivery equipment, Additional exterior noise suppression, Axial and vertical adjustable steering column, Drive Mode Select without Chassis Presets, Standard bumpers, Fresh air intake system with combinationfilter, Leather-wrapped multi-function steering wheel- heated, Child seat anchors f. child seat system i-Size- 2x top tether and child seat anchors in front on front passenger side, Without partition, 3-point seat belt for center rear seat, Center console, Without roof insert (standard roof), Without luggage/load compartment floor, Without backrest release for front seats, Hight-adjustable head restraints for front seats, Door panels with upholstery, Manual height adjustment for front seats, Unsplit rear seat bench- split folding backrest, Mounting fixture in luggage compartment, 3-point seat belts in front- with tensioner and height adjustment, Three rear head restraints, Standard tailgate, Black roof rails, Luggage compartment cover, Without additional noise suppression measures for passenger compartment, 3-point seat belts- outer rear with ECE label, Seat heater for front seats separately controlled, Emission standard EU6 AP, Without protective side molding, Tailgate without electrical opening, Heat-reflecting windshield, Central locking system Keyless Go without SAFELock, Sunset, Breakaway interior rearview mirror- auto-dimming, Rear floor panel module- type 1, Power windows with comfort operation andcircuit breaker, Driver knee airbag, Side airbag in front with curtain airbag, Without waste bin, Standard decorative trims, Glove compartment door with light, Carrier frequency 433.92 MHz-434.42 Mhz, Transport protection film with additional transport protection measures, Decorative inserts Grained Black, Right exterior mirror- convex, Left exterior mirror- convex, Sun visors with mirror and airbag label on front passenger side, Without fire extinguisher, Without additional side body covers (stone guard), Center armrest in front "Jumbo Box", Outside door mirrors in black color, Without decorative films/emblems, Spurhalte assist, Radiator grille - black, "FRONT ASSIST" - radar scan.of the spacein front of the car- incl.City ANB- without "ADAPTIVE CRUISE ASSISTANT", Interiorbars and air vents frame Black glossy, Luggage net, Grey ceiling, Gearshift knob/handle in leather, Without two-sided floor surface, Exterior mirrors- power-adjustable/ heated, Electronic immobilizer, Without socket, Without heat accumulator/auxiliary heater, Tire pressure monitoring system, Vehicle class differentiation -655-, Start-stop system with regenerative braking, Without protective film for scuff plate, Spectacle storage compartment/bracket, Manually adjustable lumbar support in front seats, Without navigation device, Without extended safety system, Rear parking sensors, Without lane change assist, Without second battery, Alternator 140 A, Without light control, LED headlamps (without corner light- without fog lights), Separate daytime running light with automatic headlight control and manual Coming and Leaving Home feature, Rear window wiper and washer system with intermittent control, Windshield wiper intermittent control with light sensor, Key for locking system with remote control, Headlight range control, 8 speakers (passive), Electronic cruise control + Speedlimiter, LED rear combination lamp- dynamic turn signal- special styling, Without front fog lamps, Without washer fluid level indicator, Without headlamp washer system, Single-tone horn, Antenna for FM reception only- diversity, Not hot country, Climatronic with impact pressure control- CFC-free, Without additional malfunction display, Bluetooth with Wireless Charging (LTE), Non-smoker's package, Without auxiliary heater/parking heater, Visual and acoustic seat belt reminder- electric contact, Boardcomputer Maxidot, Heated washer nozzles in front, MirrorLink, Equipment options subset for Denmark

**PICTURES**



**Picture viewer:** <https://fm.bilsalg.dk/business/picturebrowser?t=full&guid=922c7189-ce57-4383-8e5e-c85e7d3a5d24&carid=20655640>

## OVERVIEW OF DAMAGES AND SHORTAGES

N°	LOCATION	TYPE	SEVERITY	INSURANCE	NOTES	DAMAGE GROUP
1	Front Windscreen	Stone Chips	C5		Reporting needed	
						
2	Cabin	Cleaning	C4			
						
3	L. Rear Door	Dent	C3			
						

Severity explanation:

C0 = No damage / C1 = Simple preparation / C2 = Minor preparation needed / C3 = Can be smart repaired / C4 = Repair/spray paint / C5 = Need replacement

## ELECTRICAL AND MECHANICAL CONDITION

N°	LOCATION	TYPE	NOTES
1	Is the car drivable	Yes	