

**VEHICLE DESCRIPTION - VW Polo Life 1.0 TSI**



**First registration date:**  
6/2023

**VIN:**  
WWWZZAWZPU055125

**Colour:**  
Beige Normal gloss

**Mileage (km):**  
29.010

**Gear:**  
Manual (5 Gears)

**Fuel type:**  
Gasoline

**Body type:**  
Hatchback

**Number of doors:**  
5

**Drive type:**  
FWD

**Model year:**  
2021

**Engine power:**  
70 kW

**Number of seats:**  
5

**Engine size (cc):**  
999

**Interior:**  
Dark grey Fabric

**VEHICLE DETAILS**

**Number of keys:**  
2

**Number of license plates:**  
2

**Registration certificate:**  
Part 1 & 2 present

**Service documentation:**  
Yes

**Inspection date:**  
01-06-2026

**Last service (year/month):**  
2025/9

**Mileage (km) at last service:**  
20.311

**SUMMARY OF THE VEHICLE'S CONDITION**

**Is the car in a driveable condition:**  
Yes

**Legal tire tread (minimum 1.6 mm):**  
Yes

## WHEELS

TYPE	SEASON	BRAND	POSITION	RIM	SIZE	TREAD
Fitted	All year tires		Rear Left	Steel rim	15"	5 mm
Fitted	All year tires		Front Right	Steel rim	15"	6 mm
Fitted	All year tires		Front Left	Steel rim	15"	6 mm
Fitted	All year tires		Rear Right	Steel rim	15"	5 mm

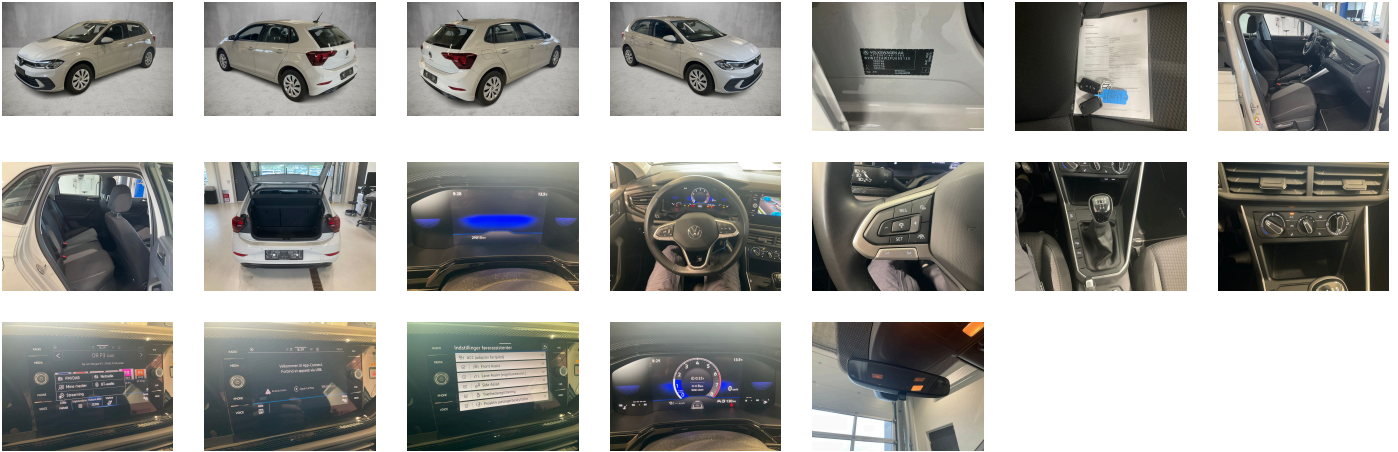
### Legal tire tread (minimum 1.6 mm):

Yes

## ACCESSORIES

Rear overhang- short, 4 doors, Front stabilizer bar, Wheelbase, Manual transmission MQ200, South Africa manufacturing sequence, Without alternative drive system, Without decals and emblems, Standard rear axle, Elimination of nameplate for engine designation on luggage compartment lid, Rear exhaust tailpipe (standard), Without floor mats, Manual in Danish, Standard climatic zones, Weight range 8 installation control only- no requirement forecast, Fuel system for fuel-injected SI engine, Electronic Stability Control w/ driver steering recommendation- ABS- ASR- EDL and EDTC, Without trailer hitch, Activated carbon canister (Evaporative Emission Control System (EVAP)), Special identification label for EC for M1 passenger vehicles, Tire Mobility Set: 12-volt compressor and tire sealant, Rear shock absorption, Drum brakes in rear, Power steering, Wheel trims, Standard wheel bolts, Tool kit and jack, Without additional front underbody guard, Warning triangle, Vehicle class differentiation - 2G0- for build status Europe, Front-wheel drive, Without differential lock, Initial standard fuel filling, Disc brakes in front (Geomet D), Delivery equipment- water border, Height and longitudinally adjustable steering column, Leather multi-function steering wheel, Without Adaptive Chassis Control, Body-colored bumpers- radiator grille with chrome trim, Fresh air intake system with combination filter, Without additional tires, License plate carrier in front and rear (ECE), ISOFIX anchors for child seats on outer rear bench seats and on front passenger seat- compatible for i-Size, 3-point seat belt for center rear seat, Without roof insert (standard roof), Luggage compartment floor, Non-folding front passenger seat backrest, Front seats with height adjustment, Unsplit rear bench seat- asymmetric split folding backrest, 3 head restraints in rear, 3-point seat belts in front with height adjustment and seat belt pretensioners, Luggage compartment cover, 3-point seat belts with seat belt pretensioners for the outer rear seats, 4 Steel wheels 5.5J x 15, Heated front seats, Door and side trim panel, Emission standard EU6 AP, Laminated safety glass windshield- heat-insulating, Central locking system without SAFELock- with radio remote control and 2 remote control folding keys, Green heat-insulating glass windows on sides and in rear, Dimming interior rearview mirror, Foamed dashboard, Rear floor panel module- type 1, Power windows, Map pockets on the back of each front seat, Driver and front passenger airbag with front passenger airbag deactivation, Without adhesive film, Without special body measures, Carrier frequency 433.92 MHz-434.42 Mhz, Transport protection film (minimum protection) with additional transport protection measures, Decorative inserts "Lava Stone Black" for dashboard and front door trim panels, Right exterior mirror- convex, Aspherical exterior mirror on driver side, Illuminated vanity mirrors in sun visors, Safety-optimized front head restraints, Curtain airbags in front and rear- side airbags in front- center airbag, Front center armrest- longitudinally adjustable- with storage compartment, Body-colored exterior mirror housings and door handles, Semi-automated driving assistance Travel Assist and lane keeping system Lane Assist, Autonomous Emergency Braking Front Assist (for Adaptive Cruise Control ACC up to 210 km/h), Ceramique headliner, Hand brake lever handle in leather, Gearshift knob in leather, Without interior light in footwell, Exterior mirrors- power-adjustable- folding and heated- w/ front passenger exterior mirror lowering function, Electronic immobilizer, Without heat accumulator/auxiliary heater, Multi-color Digital Cockpit- selection of different info profiles possible, Tire Pressure Monitoring System, Start-stop system with regenerative braking, Without protective film for scuff plate, Without lumbar support in seat backrests, Preparation for subsequent activation: Navigation feature "Discover Media" incl. Streaming & Internet, Proactive passenger protection system in combination with Front Assist, Park Assist with Park Distance Control, Lane change system Side Assist and Rear Traffic Alert, Radio, Without second battery, Without light control, Alternator 140A, LED headlamps with LED separate daytime running light, Rear window wiper with intermittent control, Windshield wiper intermittent control with light sensor, Headlight range control, 6 speakers, Interior lights with switch-off delay and dimmer- 2 reading lights in front and 2 in rear, Adaptive Cruise Control ACC incl. speed limiter, Rear fog lamp for driving on the right, LED rear combination lamps, Warning lamp for washer fluid level, Without front fog lamps, Without headlamp washer system, Single-tone horn, Not hot country, Diversity antenna for FM reception, Air conditioning system with enhanced air filter with activated carbon, Luggage compartment lighting, Automatic headlight control with exit and entry lighting, Non-smoker's package: Storage compartment and 12-V outlet in front, Without auxiliary heater/parking heater, Warning signal and warning light for front and rear seat belts not fastened, Without heated washer nozzles, App-Connect incl. App-Connect Wireless for Apple CarPlay and Android Auto, Mobile phone interface, Life, Driving on the right, Standard version, Type approval country Denmark, Part set without country-specific prescriptive standard, Operating permit- alteration, 3-cylinder SI engine 1.0 l TSI- 70 kW, No special edition, Without ECO function, Online service- with OCU- with head unit coding- without engine immobilizer interconnection, Driver alert system, Regional code " ECE " for radio, No special purpose vehicle- standard equipment, Shock absorption in front, 5-speed manual transmission, Vehicles with special upgrade measures, Battery 320 A (49 Ah), Tires 185/65 R15 low rolling resistance, Hatchback, Without camera systems/accident sensors, Refrigerant R1234yf, Suspension range 04 installation control only- no requirement forecast, Left-hand drive, Inserts of front seats and outer rear seats in fabric "Life", Standard battery/alternator capacity, Emergency call service, no registration required- service is activated upon delivery, Park & Convenience assistance package, IQ.DRIVE assistance systems package, Standard seats in front, LongLife Service Regime, Without voice control, Service indicator 30 000 km or 2 years (variable), Chrome package, Multifunction camera, Storage compartment for Manual under left front seat, Without add. lights (interior lighting), Without dynamic road sign display, Digital radio reception DAB+, Radio "Ready 2 Discover" incl. "Streaming & Internet", 3-cylinder SI engine 1.0 l, Instrument cluster with electronic speedometer- odometer and trip odometer- tachometer, 2 USB-C ports in the front- 2 USB-C charging sockets on the center console in rear- charging capacity up to 45 W, Without exterior ambient lighting, Hill start assist, Tires without specification of tire brand, Standard pedal cluster, Pedestrian and cyclist monitoring, Preparation for We Connect and We Connect Plus, N/A

**PICTURES**



**Picture viewer:** <https://fm.bilsalg.dk/business/picturebrowser?t=full&guid=03c246f1-0cc4-481c-8ec2-13762acd1b05&carid=20619335>

## OVERVIEW OF DAMAGES AND SHORTAGES

No damages or shortages

## ELECTRICAL AND MECHANICAL CONDITION

N° LOCATION	TYPE	NOTES
1	Is the car drivable	Yes