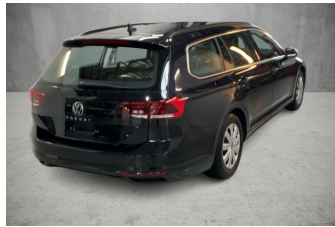
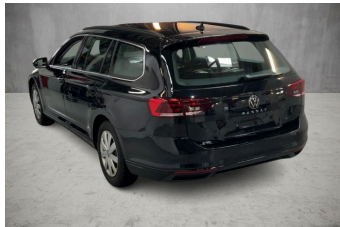


VEHICLE DESCRIPTION - VW Passat Business 1.5 TSI



First registration date:
6/2023

VIN:
WVWZZZ3CZPE069172

Colour:
Black Metallic Normal gloss

Mileage (km):
39.816

Gear:
Automatic (7 Gears)

Fuel type:
Gasoline

Body type:
Estate Wagon

Number of doors:
5

Drive type:
FWD

Model year:
2019-2024

Engine power:
110 kW

Number of seats:
5

Engine size (cc):
1498

Interior:

VEHICLE DETAILS

Number of keys:
2

Number of license plates:
2

Registration certificate:
Part 1 & 2 present

Service documentation:
No

Inspection date:
03-06-2026

Last service (year/month):

Mileage (km) at last service:

SUMMARY OF THE VEHICLE'S CONDITION

Is the car in a driveable condition:
Yes

Legal tire tread (minimum 1.6 mm):
Yes

WHEELS

 TYPE	SEASON	BRAND	POSITION	RIM	SIZE	TREAD
Fitted	Winter tires		Rear Left	Steel rim	16"	6 mm
Fitted	Winter tires		Front Right	Steel rim	16"	6 mm
Fitted	Winter tires		Front Left	Steel rim	16"	6 mm
Fitted	Winter tires		Rear Right	Steel rim	16"	6 mm
Extra Wheel	Summer tires		Rear Left	Alloy rim	17"	5 mm
Extra Wheel	Summer tires		Front Right	Alloy rim	17"	5 mm
Extra Wheel	Summer tires		Front Left	Alloy rim	17"	5 mm
Extra Wheel	Summer tires		Rear Right	Alloy rim	17"	5 mm

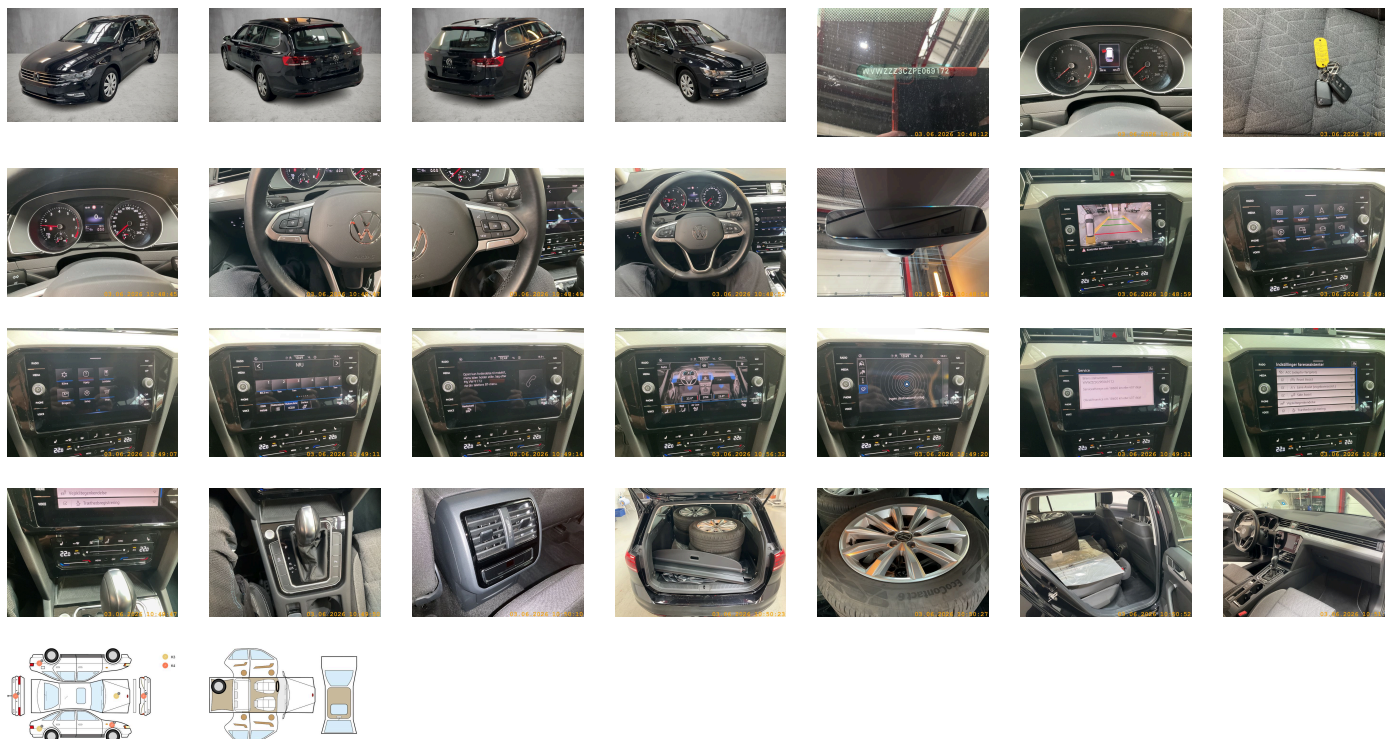
Legal tire tread (minimum 1.6 mm):

Yes

ACCESSORIES













Wheelbase, Dual-clutch transmission DSG DQ200, Standard manufacturing sequence, Without alternative drive system, Fuel tank with a volume of 66 l, Elimination of nameplate for engine designation on luggage compartment lid, Rear exhaust tailpipe (standard), With electronic steering column lock, Carpet mats in front and rear, Manual in Danish, Standard climatic zones, Weight range 2 installation control only- no requirement forecast, Fuel system for fuel-injected SI engine, Electronic Stability Control and electromechanical brake booster, Without trailer hitch, Activated carbon canister (Evaporative Emission Control System (EVAP)), Special identification label for EC for M1 passenger vehicles, Elimination of Tire Mobility Set, Rear shock absorption- basic version 1, Electromechanical speed-sensitive power steering, Wheel locks with extended theft protection, Mass damper for steering wheel- 36 Hz, Tool kit, Without additional front underbody guard, First aid kit and warning triangle, Front-wheel drive, Without differential lock, Initial standard fuel filling, Disc brakes in front, Without electric motor (hybrid), Without delivery equipment, Disc brakes in rear, Without locking and starting systems, Leather multi-function steering wheel with shifting paddles, Without Adaptive Chassis Control, Bumpers with body-colored decorative trims, Plastic loading edge protection, Without additional tires, License plate carrier in front and rear (ECE), ISOFIX anchorage points for mounting of 2 child seats on rear bench seat- also for i-Size child seats, 3-point seat belt for center rear seat, Without partition, Decorative inserts "Piano Black" for center console, Without roof insert (standard roof), Folding luggage compartment floor, Non-folding front passenger seat backrest, Door and side trim panel in foam film and woven fabric, Unsplit rear bench seat- asymmetric folding backrest- center armrest with storage comp. and load-through hatch, Front seats with height adjustment- ergoComfort seat on driver side- with electrical backrest adjustment, 3-point seat belts in front with height adjustment and seat belt pretensioners, Black roof rails, 3 head restraints in rear, Luggage compartment cover extractable and removable, Without roll-up sunshade, 3-point seat belts with seat belt pretensioners for the outer rear seats, Heated front seats, Body-colored lower side trims, Emission standard EU6 AP, Without seat ventilation/massage seat, Remote unlocking for tailgate/trunk lid, Laminated safety glass windshield- heated (w/o wires)- infrared-reflecting windshield- sound-insulating, Child safety lock, Keyless Start without SAFELOCK, Green heat-insulating glass windows on sides and in rear, Auto-dimming interior rearview mirror, 2 beverage holders in front with cover, Driver and front passenger airbag with front passenger airbag deactivation- including knee airbag on driver side, Without front passenger seat control, Curtain airbag system for front and rear passengers incl. side airbags in front, Chrome trims on the side windows, Without special body measures, Carrier frequency 433.92 MHz-434.42 Mhz, Without rear spoiler, Transport protection film (minimum protection) with additional transport protection measures, Decorative inserts "Cross Hatch" for dashboard and door trim panels, Right exterior mirror- convex, Aspherical exterior mirror on driver side, Illuminated vanity mirror in sun visors- extractable sun visors, Safety-optimized front head restraints- longitudinally and height adjustable, Without fire extinguisher, Front center armrest- height- and longitudinally adjustable- w/ storage comp.- 2 vents w/ chrome louvers in rear, Travel Assist- Lane Assist and Emergency Assist, Autonomous Emergency Braking Front Assist (for Adaptive Cruise Control ACC up to 210 km/h), Without tie down straps/net/pocket, Mistral Gray headliner, Gearshift knob in leather, Textile luggage compartment lining, LED light unit in front footwell, Ext. mirror w/surround lighting a. front passenger ext. mirror lowering function- folding/heated-auto-dimming on dr. side, Electronic immobilizer, 12 V outlet in center console in rear and in luggage compartment, Without heat accumulator/auxiliary heater, Without preparation for VTS (vehicle tracking system), Tire Pressure Monitoring System, Start-stop system with regenerative braking, Plastic scuff plates in door apertures, Lumbar supports in front- power-adjustable on driver side, Without CD/DVD for navigation, Standard engine starter, Navigation system "Discover Media" incl. Streaming & Internet, Proactive passenger protection system in combination with Front Assist and Side Assist, Park Distance Control - warning signals for obstacles in the front and rear, Lane change system Side Assist and Rear Traffic Alert, Vehicle class differentiation -3G0-, Radio, Without second battery, High-beam control Light Assist, Alternator 140 A, LED headlamps with LED separate daytime running light, Aut. headlight control with separate daytime running light- entry lighting and manual exit lighting, Rain sensor, Headlight range control, 8 speakers, Interior lights with switch-off delay and dimmer- 2 LED reading lights in front and 2 in rear, Adaptive Cruise Control ACC stop & go incl. speed limiter, Rear fog light on one side- back-up light on both sides, LED rear combination lamps, LED front fog lamps and cornering light, Without headlamp washer system, Two-tone horn, Not hot country, Diversity antenna for FM reception, Without integrated toll system, Without preparation for two-way radio installation, Non-smoker's package: Storage compartment and 12 V outlet in front, Without preparation for rotating beacon/siren combination, Mobile phone interface "Comfort" with inductive charging feature, Without auxiliary heater/parking heater, Warning signal and warning lamp for front and rear seat belts not fastened, Multi-function display "Premium" with multi-color display, Automatically-heated washer nozzles in front, LED entry/warning lights in front doors, Without "Multimedia" in vehicle, Operating voltage 12 V, Category 0, Business, Driving on the right, Type approval country Denmark, Part set without country-specific prescriptive standard, Operating permit- alteration, 4 alloy wheels "London" 7J x 17, 4-cylinder SI engine 1.5 l TSI- 110 kW, No special edition, Without ECO function, Online service- with OCU- with head unit coding- without engine immobilizer interconnection, Driver alert system, Regional code " ECE " for radio, Without vehicle inlet, Without charging cable, No special purpose vehicle- standard equipment, Standard paint coating, Basic equipment variant, Shock absorption in front, 7-speed automatic transmission or dual-clutch transmission DSG- note: PR family EDF, Electronic engine sound, Vehicles with special upgrade measures, Battery 380 A (59 Ah) EFB+, AirStop® tires 215/55 R17- rolling resistance class A, Wagon, Rear view camera system, Air Care Climatronic 3 zone automatic climate control w/ allergen filter-enhanced air filter a. controls in rear, Refrigerant R1234yf, Without head-up display, Left-hand drive, Suspension range 31 installation control only- no requirement forecast, Inserts of front seats and outer rear seats in fabric "Business", Standard battery/alternator capacity, Emergency call service, no registration required- service is activated upon delivery, Heated (without wires) and infrared-reflecting windshield, "London" 7J x 17- AirStop® tires 215/55 R17, Rear seat area package with air conditioning and power system, Proactive passenger protection system and lane change system Side Assist, Travel Assist incl. Emergency Assist, Winter package, Comfort seats in front, Without child seat, LongLife Service Regime, Without voice control, Service indicator 30 000 km or 2 years (variable), Front vent and rotary light switch illuminated- with chrome bezel, Multifunction camera, Without add. lights (interior lighting), Dynamic Road Sign Display, Digital radio reception DAB+, Small navigation system M&I (Media & Internet package), 4-cylinder SI engine 1.5 l, Instrument cluster with electronic speedometer- odometer and trip odometer- tachometer, 2 USB-C ports in the front- 1 USB-C charging socket on the center console in rear- charging capacity up to 45 W, Hill Start Assist, Electromechanical parking brake with Auto Hold function, Without clock, Tires without specification of tire brand, Without garage door opener, Standard pedal cluster, Pedestrian Monitoring, VE: NCAP package, DK: Package forces WFA-7X2-KA2 (TL) forces KA2-8G1-PGW-6XI (starting w/ CL), Preparation for We Connect and We Connect Plus, Equipment options subset for Denmark

PICTURES



Picture viewer: <https://fm.bilsalg.dk/business/picturebrowser?t=full&guid=5d8164b8-5d3e-4b81-8092-22903ec131ea&carid=20596152>

OVERVIEW OF DAMAGES AND SHORTAGES

N°	LOCATION	TYPE	SEVERITY	INSURANCE	NOTES	DAMAGE GROUP
1	Front Bumper	Scratch	C4		Reporting needed	Group 1
						
2	Rear Bumper	Scratch	C4		Reporting needed	
						
3	L. Rear Quarter Panel	Dent	C4		Reporting needed	
						
4	R. Front Quarter Panel	Scratch	C4		Reporting needed	Group 1
						
5	Hood	Stone Chips	C3			
						
6	R. Rear Quarter Panel	Dent	C3			
						

Severity explanation:

C0 = No damage / C1 = Simple preparation / C2 = Minor preparation needed / C3 = Can be smart repaired / C4 = Repair/spray paint / C5 = Need replacement

ELECTRICAL AND MECHANICAL CONDITION

N°	LOCATION	TYPE	NOTES
1	Is the car drivable	Yes	