

VEHICLE DESCRIPTION - VW Multivan Life 1.4 TSI eHybrid PHEV



First registration date:
6/2023

VIN:
WV2ZZZST7PH013561

Colour:
Gray Metallic Normal gloss

Mileage (km):
87.484

Gear:
Automatic (6 Gears)

Fuel type:
Hybrid petrol

Body type:
Minibus

Number of doors:
5

Drive type:
FWD

Model year:
2021

Engine power:
160 kW

Number of seats:
7

Engine size (cc):
1395

Interior:
Grey Fabric

VEHICLE DETAILS

Number of keys:
2

Number of license plates:
2

Registration certificate:
Part 1 present

Service documentation:
Yes

Inspection date:
06-06-2026

Last service (year/month):
2026/3

Mileage (km) at last service:
84.393

SUMMARY OF THE VEHICLE'S CONDITION

Is the car in a driveable condition:
Yes

Legal tire tread (minimum 1.6 mm):
Yes

WHEELS

 TYPE	SEASON	BRAND	POSITION	RIM	SIZE	TREAD
Fitted	Summer tires		Front Left	Alloy rim	17"	4 mm
Fitted	Summer tires		Rear Right	Alloy rim	17"	4 mm
Fitted	Summer tires		Rear Left	Alloy rim	17"	4 mm
Fitted	Summer tires		Front Right	Alloy rim	17"	4 mm

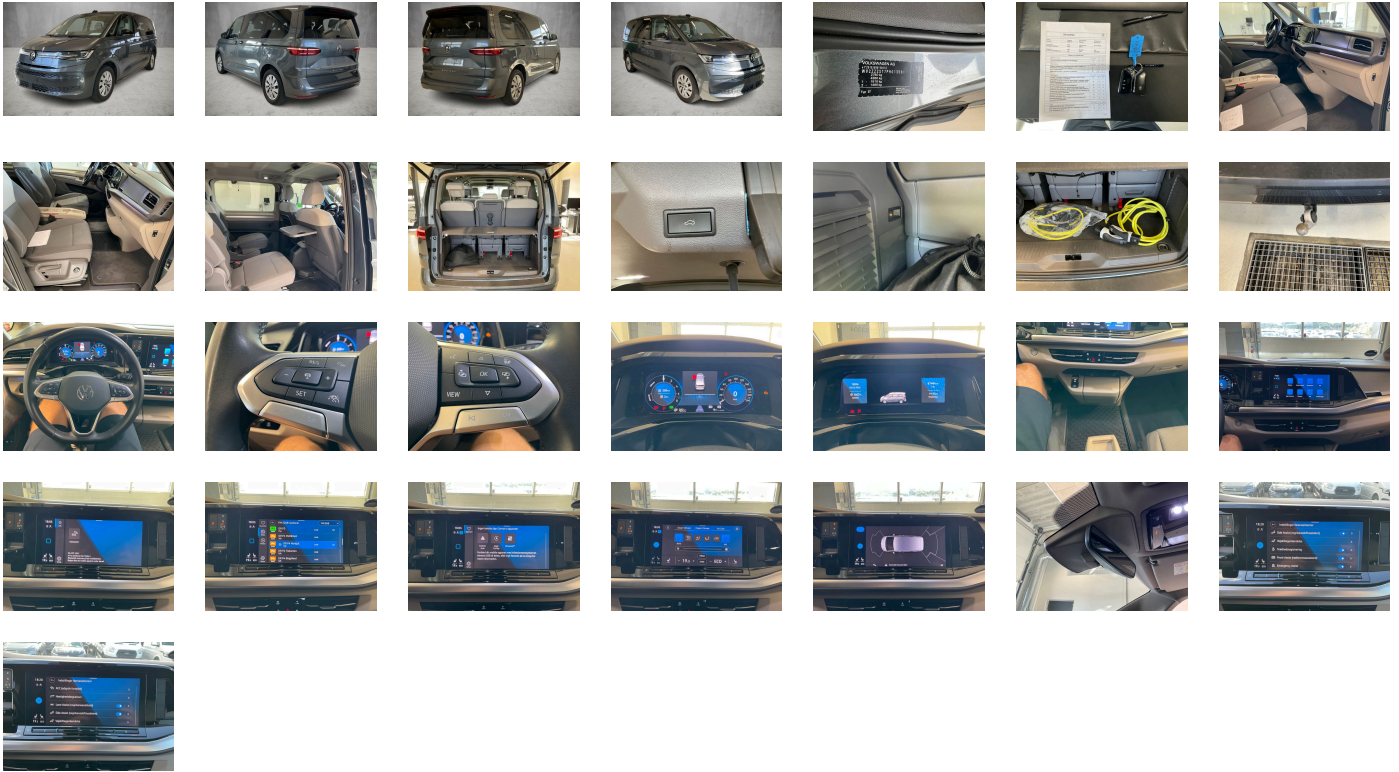
Legal tire tread (minimum 1.6 mm):

Yes

ACCESSORIES

Rear overhang- short, Installation differentiation for transmission DQ400 -- vehicle components --, Weight category front axle weight range 3, Hybrid propulsion system PHEV, Without underride guard, Carpet mats in cab, Manual in Danish, Standard climatic zones, Weight range 4 installation control only- no requirement forecast, Fuel system for fuel-injected SI engine- injection system without fuel return, Electronic Stability Control and electromechanical brake booster, Standard suspension and shock absorption, Special identification label for EC for M1 passenger vehicles, Without spare wheel, Labels without country group, 17-inch disc brakes in front and 16-inch disc brakes in rear, Folding trailer hitch- with electric release (incl. trailer stabilization), Speed-sensitive power steering (Servotronic), Hub cap for alloy wheels, Lockable wheel bolts, Tool kit and Tire Mobility Set (in the storage compartments in the luggage compartment), First aid kit with warning triangle and safety vest, Multi-function table/center console with 3 beverage holders- slidable in the entire vehicle, Front-wheel drive, Initial standard fuel filling, Vehicle class differentiation -7T0-, Leather-covered multifunction steering wheel with shift paddles- heated, Without Driving Mode Selection "Drive Select", Lock carrier cover in plastic, "Multivan" nameplate in the center of the luggage compartment lid (for UK), Without additional tires, Without partition, Without panoramic glass sunroof, Without storage compartments in trunk, 3-point seat belts in front- with pretensioner/lap belt pretensioner and height adjustment, Tailgate with power opening and closing, Seat on the right with height adjustment and 2-way head restraint in 1st row of seats, Seat on the left with height adjustment and 2-way head restraint in 1st row of seats, Load compartment partition (load: 20 kg) with bag hooks and luggage net, 3 single seats in 3rd row of seats, Additional interior noise suppression measures, 3-point seat belts on outer rear seats- seat belt pretens. on outer seats w/ECE label- preten. only 2nd and 3rd row, Seat heater for both seats in cab- left and right individually controllable, Emission standard Euro 6d ISC-FCM (in-service conformity - fuel consumption monitoring), 2 single seats in driving direction in 2nd row of seats, Without seat ventilation, Tailgate/trunk lid power closing, Window in sliding door on the left, Swerve support and oncoming vehicle braking when turning, Laminated safety glass windshield- heat- and sound-insulating, Central locking system with Keyless Start- without SAFELock, Window in sliding door on the right, Auto-dimming breakaway interior rearview mirror, Armrests on driver and front passenger seat on both sides- with power-adjust. lumbar support and folding table, Driver and front passenger airbags with front passenger airbag deactivation, Glove compartment with illumination, Reinforced velour carpet floor covering in passenger compartment, UWB-capable country and carrier frequency- 433.92 to 434.42 MHz, Without additional tray areas in cab, Transport protection measures including surface protection film on the hood and on the roof, Decorative inserts "Dark Silver Brushed", Sliding door on the left with power latching, Sliding door on the right with power latching, Sun visors w/ vanity mirror- illumin.- ticket holder on driver side- w/ airbag warning label on sun visor and B-pillar, Without fire extinguisher, Side and curtain airbags for driver and front pass.- curtain airbags for outer seats in rear- center airbag in front, Armrests on both sides of seats (remov. and repositionable) and fold. tables on backside of seats in 2nd row of seats, 2 preparations for armrests on inner side of seats in 3rd row of seats, Exterior mirror housing in High-Gloss Black, Semi-automated driving assistance Travel Assist including lane keeping system Lane Assist and Emergency Assist, Illuminated molding between headlamps, Without mud flap, Charging cable- Mode 2- type 2/K (6 A), Charging cable for alternating-current charging station (Mode 3), Lane change system Side Assist incl. Blind Spot Monitor- Rear Traffic Alert and exit warning system, Electronic immobilizer, Digital Cockpit Pro, Tire Pressure Monitoring System (as per EU type approval), Radio "Ready 2 Discover" with 25.4-cm (10-inch) color touch screen incl. Streaming & Internet, Proactive passenger protection system (basic and front), Park Distance Control in front and rear, Optional infotainment system (MIB3), Advanced high-beam control Dynamic Light Assist for LED matrix headlamps, DC-DC converter 3.0 kW, IQ.LIGHT LED matrix headlamps with LED separate daytime running light, Auto. Emergency Braking Front Assist with Pedestrian and Cyclist Monitoring, Windshield wiper intermittent control with rain sensor, Dynamic headlight range control with dynamic cornering light, 2 vehicle keys, 8 speakers (passive), Adaptive Cruise Control ACC stop & go with speed limiter, Without additional instruments for distance measurement, LED rear combination lamps, Poor weather light (including cornering light), Not hot country, Without emergency alarm system for taxi/private hire car, 3-zone Air Care Climatronic with additional control panel in passenger compartment (not in the Beach model), Without preparation for two-way radio installation, Separate daytime running light with automatic headlight control- exit lighting and entry lighting, Mobile phone interface Comfort with inductive charging feature, Non-smoker's package, Without identification lights, Without fuel-fired auxiliary heater, Warning signal and warning lamp for front and rear seat belts not fastened, Surround lighting in door area, App-Connect incl. App-Connect Wireless for Apple CarPlay and Android Auto, "Life", Driving on the right, Type approval country Denmark, Part set without country-specific prescriptive standard, Operating permit- alteration, 4-cylinder SI engine 1.4 l/110 kW TSI- hybrid base engine is TH8/T9D, No special edition, Preparation for online services, Driver alert system, Regional code " ECE " for radio, No special purpose vehicle- standard equipment, Registration for maximum 7 seats, 6-speed dual-clutch transmission DSG, V2X, Standard curb weight range, Front axle weight- standard, Rear axle weight- standard, Without interface for external use, Tires 235/55 R17 103H XL- low rolling resistance, Battery 380 A (68 Ah), Multivan, Without camera systems/accident sensors, Without head-up display, Left-hand drive, Bi-color seat trim covers in fabric "Ribella", Standard battery/alternator, eCall Emergency System, Adaptive Cruise Control ACC stop & go with speed limiter incl. V2X, Dark-tinted window glasses in rear, Drawers under the outer seats in the passenger compartment and 2 waste bins, Voice control, Service indicator 15 000 km or 1 year (fix), Without aluminum/chrome package, Multifunction camera, Surround lighting on the tailgate and 30-color ambient lighting- including footwell lighting for 2nd row of seats, Dynamic Road Sign Display, Digital radio reception, Preparation for We Connect and We Connect Plus, Control (in-plant), 4-cylinder SI engine 1.4 l unit 04E.C, Instrument cluster- display in km/h, 2 USB-C ports in the front- 4 USB-C charging sockets in the passenger compartment, Tires without specification of tire brand, 4 alloy wheels "Dundrod" 6.5J x 17- Silver, Pedal cluster, Denmark, Semi-automated driving assistance Travel Assist and Emergency Assist, IQ.LIGHT - LED matrix headlamps, 7-seater package = 2-2-3- w/ 4 armrests (on both sides) and 2 folding tables in the 2nd row of seats, Power luggage compartment lid (opening/closing), Equipment options subset for Central Eur ope

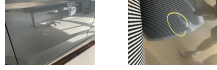
PICTURES



Picture viewer: <https://fm.bilsalg.dk/business/picturebrowser?t=full&guid=f9ce810d-d026-4ab9-8bf8-1271a0af8676&carid=20596149>

OVERVIEW OF DAMAGES AND SHORTAGES

N°	LOCATION	TYPE	SEVERITY	INSURANCE	NOTES	DAMAGE GROUP
1	R. Rear Door	Dent	C3			



Severity explanation:

C0 = No damage / C1 = Simple preparation / C2 = Minor preparation needed / C3 = Can be smart repaired / C4 = Repair/spray paint / C5 = Need replacement

ELECTRICAL AND MECHANICAL CONDITION

N°	LOCATION	TYPE	NOTES
1	Is the car drivable	Yes	