

**VEHICLE DESCRIPTION - Audi Q5 S Line Midnight Edition 2.0 40 TDI MHEV**



|   |   |
|---|---|
| <b>First registration date:</b><br>6/2023         | <b>VIN:</b><br>WAUZZZFY6P2122128                  |
| <b>Colour:</b><br>Dark gray Metallic Normal gloss | <b>Mileage (km):</b><br>39.907                    |
| <b>Gear:</b><br>Automatic (7 Gears)               | <b>Fuel type:</b><br>Hybrid diesel                |
| <b>Body type:</b><br>SUV                          | <b>Number of doors:</b><br>5                      |
| <b>Drive type:</b><br>4WD                         | <b>Model year:</b><br>2020-2025                   |
| <b>Engine power:</b><br>150 kW                    | <b>Number of seats:</b><br>5                      |
| <b>Engine size (cc):</b><br>1968                  | <b>Interior:</b><br>Dark grey Partial leatherette |

**VEHICLE DETAILS**

|                                       |   |  |                                      |
|---------------------------------------|---|--|--------------------------------------|
| <b>Number of keys:</b><br>2           | <b>Number of license plates:</b><br>2       | <b>Registration certificate:</b><br>Part 1 & 2 present | <b>Service documentation:</b><br>Yes |
| <b>Inspection date:</b><br>04-05-2026 | <b>Last service (year/month):</b><br>2025/7 | <b>Mileage (km) at last service:</b><br>25.958         |                                      |

**SUMMARY OF THE VEHICLE'S CONDITION**

|  |  |
|--|--|
| <b>Is the car in a driveable condition:</b><br>Yes | <b>Legal tire tread (minimum 1.6 mm):</b><br>Yes |
|--|--|

## WHEELS

|  TYPE | SEASON       | BRAND | POSITION    | RIM       | SIZE | TREAD |
|---|--------------|-------|-------------|-----------|------|-------|
| Fitted  | Summer tires |       | Rear Left   | Alloy rim | 19"  | 4 mm  |
| Fitted  | Summer tires |       | Front Right | Alloy rim | 19"  | 3 mm  |
| Fitted  | Summer tires |       | Front Left  | Alloy rim | 19"  | 3 mm  |
| Fitted  | Summer tires |       | Rear Right  | Alloy rim | 19"  | 4 mm  |

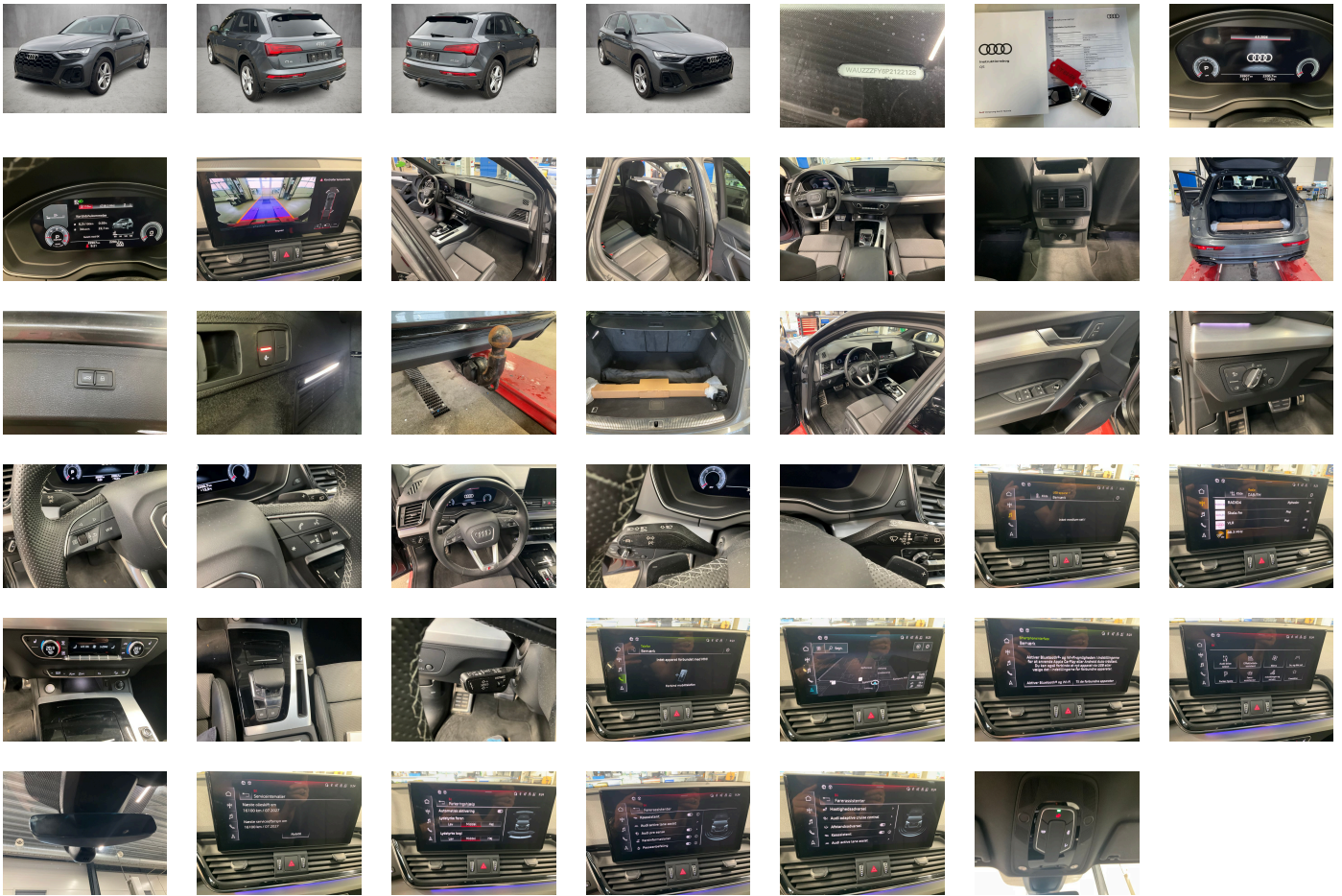
### Legal tire tread (minimum 1.6 mm):

Yes

## ACCESSORIES



Trailer hitch, Special identification label (EU), Tire repair kit, Disc brakes in rear- 17-inch (ECE), Disk brakes- front- 17-inch (ECE), Wheel bolts- anti-theft, Standard suspension, Without additional front underbody guard, Vehicle tool kit (without vehicle jack), First-aid kit with warning triangle and high-visibility vests, Installation parts for four-cylinder engine, Leather steering wheel- 3-spoke with multifunction plus, quattro, Increase in initial standard fuel filling, Axial and vertical adjustable steering column, Audi connect key, Filler neck module 1 without insert, Audi drive select, Labels in English and German, Reinforced bumpers, Loading sill protector- stainless steel, Without additional tires, Model name as per new output designation, Without electric motor (hybrid), ISOFIX child seat mounting and top tether for the outer rear seats, Partition net, Without roof insert (standard roof), Loading floor, Without child seat anchora in front (ISOFIX), Front seats- manually adjustable, Passenger car design, Split-folding rear seat backrest, Black roof rails with roof rack detection system, Luggage compartment cover, Without roll-up sunshade, Seat heating- front, Emission standard EU6 AP, Without seat ventilation/massage seat, Luggage compartment lid- electrically opening and closing, Windshield with heat-reflecting glass and acoustic glass, Manual child safety lock, Convenience key- without Safelock, Rear and side windows with heat-insulating glazing, Interior mirror- automatically dimming- frameless, Beverage holders, Airbags- front, front passenger airbag can be deactivated, Side airbags- front and head airbag system, Black Styling package, Without special body measures, Carrier frequency 433.92 MHz-434.42 Mhz, Roof spoiler, Adhesive film, Left exterior mirror- aspherical, Inlays- Matt Brushed Aluminum, Sun visors- front, Head restraints- front, Without fire extinguisher, Comfort center armrest- front, Exterior mirror housings in Black, Emblems, Audi active lane assist, Audi pre sense city, Headlining in cloth- Black, Luggage compartment mat, Right exterior mirror- aspherical, Rear trim panel (ECE), Without front license plate carrier, Exterior mirrors- electrically adjustable- heated and folding- automatically dimming on both sides, Electronic immobilizer, Electric auxiliary air heater, Gearshift/selector lever handle, Without preparation for VTS (vehicle tracking system), Without leather, Vehicle class differentiation -FY0/FYF-, Tire pressure loss indicator, Start-stop system, 4-way lumbar support for the front seats, MMI navigation plus with MMI touch, Without extended safety system, Parking system plus, Without lane change assist, Without mains cable for industrial connector for the e-tron charging system, Without charging cable for public charging (AC)- mode 3, Matrix LED headlights with dynamic light sequencing and dynamic turn signal, Matrix LED headlights with dynamic light sequencing and dynamic turn signal, Separate daytime running light, Audi adaptive cruise control, LED rear lights with dynamic light sequencing and dynamic turn signal, Headlight cleaning system, Two-tone horn, Not hot country, 3-zone deluxe automatic air conditioning, Without integrated toll system, Belt-driven integrated starter alternator 12 V- 130 - 200 A, Non-smoker version, Without auxiliary heater/parking heater, Seat belt reminder, Audi virtual cockpit plus, Without additional warning lights, Audi sound system, Audi phone box light, Equipment options subset for Denmark, Standard-production quality, Driving on the right, No self-collection, Audi AG, Category 0, S line, Part set without country-specific prescriptive standard, Type approval country Denmark, Wheels- 5-twin-spoke star- S design- gloss turned finish- 8.0J x 19- 235/55 R19 tires, Operating permit- alteration, 4-cyl. turbo diesel engine 2.0 l/150 kW (4V) TDI- common rail base engine is T6F/T98/T48/T4T/T1T/T1H, Regional code " ECE " for radio, Without vehicle inlet, Without e-tron charging system compact (AC)- without mains cable for domestic connector, No special edition, Control of series production, AdBlue tank with increased capacity, Basic equipment variant, Preparation for functions on demand, Production wheels, Country group A, No special purpose vehicle- standard equipment, Without preconditioning, Without antenna amplifier, quattro with ultra technology, Without acoustic vehicle alerting system, Vehicles with special upgrade measures, Accent surfaces- Gloss Black, Without Car2X, S tronic (for all-wheel drive), Tires 235/55 R19 101W, Audi connect navigation & infotainment, Smartphone interface, Audi connect emergency call & service with Audi connect remote & control, Diesel engine, Data module- Europe, Battery 380 A (68 Ah), Reversing camera, Refrigerant R1234yf, Without head-up display, Box, Left-hand drive, Without wall mount, Transit coating (type 2), Sequence cloth/leather combination, Assist package Tour, Matrix LED headlights and LED rear lights and headlight cleaning system, Without Storage package, Service indicator 30 000 km or 2 years ( variable ), With multifunction camera, Sun protection glass- tinted, Ambient Lighting package plus, Camera-based traffic sign recognition, Without step, Digital Audio Broadcasting, Electromechanical power steering, Sport seats- front, Control of special edition prices, 4-cylinder diesel engine 2.0 l unit 05LA, Hold assist, Instrument cluster- km/h speedometer, Without garage door opener, Stainless steel pedals and footrest, Standard electric, Extended pedestrian protection, Door sill trims with aluminum inlays- front- illuminated- S logo, Without danger alarm system, Tires without specification of tire brand, Equipment package for Denmark, Comfort package II for Denmark, Business package for Denmark, Equipment package for Germany, Interior S line, Internal control code, Internal control code, Internal control code, Standard, Standard manufacturing sequence, Fuel system for diesel engine, tiptronic, Weight category front axle weight range 5, Mild hybrid, With special labels safety certificates for Denmark, Fuel tank with increased capacity, Without ignition/starter switch locking system- without steering lock, Floor mats- front and rear, Manual in Danish, Weight range 7 installation control only- no requirement forecast, Standard climatic zones, Basic, Sport suspension

**PICTURES**



**Picture viewer:** <https://fm.bilsalg.dk/business/picturebrowser?t=full&guid=aed03a1c-a413-4ea5-a554-9d5fc655005e&carid=20596143>

## OVERVIEW OF DAMAGES AND SHORTAGES

| N° | LOCATION  | TYPE  | SEVERITY | INSURANCE | NOTES            | DAMAGE GROUP |
|----|---|---|----------|-----------|------------------|--------------|
| 1  | Front Windscreen  | Stone Chips   | C5       |           | Reporting needed |              |
|    |  |  |          |           |                  |              |

Severity explanation:

C0 = No damage / C1 = Simple preparation / C2 = Minor preparation needed / C3 = Can be smart repaired / C4 = Repair/spray paint / C5 = Need replacement

## ELECTRICAL AND MECHANICAL CONDITION

| N° | LOCATION            | TYPE | NOTES |
|----|---------------------|------|-------|
| 1  | Is the car drivable | Yes  |       |