

**VEHICLE DESCRIPTION - Škoda Karoq Style 1.5 TSI**



**First registration date:**  
6/2023

**VIN:**  
TMBJR7NU1P5057707

**Colour:**  
Black Metallic Normal gloss

**Mileage (km):**  
23.851

**Gear:**  
Automatic (7 Gears)

**Fuel type:**  
Gasoline

**Body type:**  
SUV

**Number of doors:**  
5

**Drive type:**  
FWD

**Model year:**  
2022

**Engine power:**  
110 kW

**Number of seats:**  
5

**Engine size (cc):**  
1498

**Interior:**  
Black Fabric

**VEHICLE DETAILS**

**Number of keys:**  
2

**Number of license plates:**  
2

**Registration certificate:**  
Part 1 & 2 present

**Service documentation:**  
Yes

**Inspection date:**  
23-06-2026

**Last service (year/month):**  
2025/6


**Mileage (km) at last service:**  
15.501

**SUMMARY OF THE VEHICLE'S CONDITION**

**Is the car in a driveable condition:**  
Yes

**Legal tire tread (minimum 1.6 mm):**  
Yes

## WHEELS

|  TYPE | SEASON       | BRAND | POSITION    | RIM       | SIZE | TREAD |
|---|--------------|-------|-------------|-----------|------|-------|
| Fitted  | Summer tires |       | Front Left  | Alloy rim | 18"  | 5 mm  |
| Fitted  | Summer tires |       | Rear Right  | Alloy rim | 18"  | 5 mm  |
| Fitted  | Summer tires |       | Rear Left   | Alloy rim | 18"  | 5 mm  |
| Fitted  | Summer tires |       | Front Right | Alloy rim | 18"  | 5 mm  |

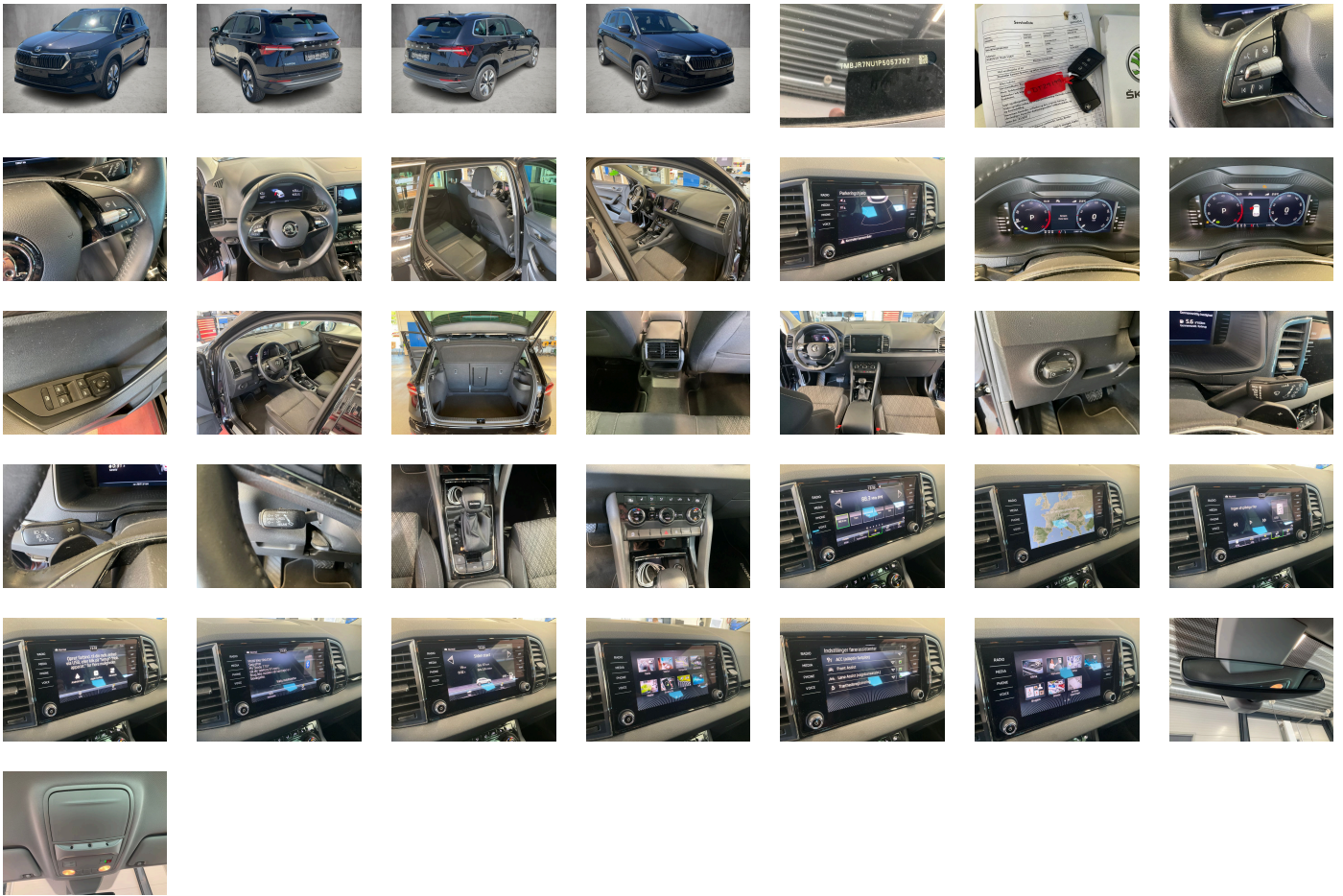
### Legal tire tread (minimum 1.6 mm):

Yes

## ACCESSORIES





"KESSY FULL" with alarm and SAFE system, Remote Access 1 year, No special edition, Standard wheel bolts, Without adapter, Vehicle class differentiation -5EP-, Rear exhaust tailpipe (standard), Hill start assist, Emission standard EU6 AP, Trailer hitch preparation, Driver knee airbag, Activated carbon canister (Evaporative Emission Control System (EVAP)), Storage compartment package 3, Glasses storage compartment, Antenna for FM reception only- diversity, Exterior mirrors- auto-dimming- power-folding/adjustable/heated, Left exterior mirror- convex, Standard electronic engine sound, Right exterior mirror- convex, Without alternative drive system, Front-wheel drive, "SMART LINK" (wireless for Apple), Luxury equipment, Forward collision warning incl. autonomous emergency braking- for adaptive cruise control "high", Disc brakes in rear, Battery 420 A (70 Ah), Disc brakes in front, Exterior mirror housings and various add-on parts in body color, Standard battery/alternator capacity, Part set without country-specific prescriptive standard, Tool kit, Electronic stability control (ESC), Manual in Danish, Operating voltage 12 V, Brake pad wear indicator, Heated windscreen washer nozzles, Driving profile selection and conventional shock absorber, Chrome package (type 2), Operating permit- alteration, Bright roof rails, Without roof insert (standard roof), Rear shock absorption- chassis with increased ride height, Without decorative films/emblems, Shock absorption in front, Without load-through hatch, ECO function, Installation differentiation for transmission DQ200 -- vehicle components --, Anti-theft alarm system- interior monitoring- backup horn and towing protection, Decorative inserts, Door sills (front), Without emblem package, Park distance control system (parking sensors rear), Without extended safety system, External- USB type C- only data socket(s), Standard manufacturing sequence, Power windows with comfort operation and circuit breaker, Without additional malfunction display, Extended and proactive pedestrian protection, Standard pedal cluster, Separate daytime running light with automatic headlight control and manual Coming and Leaving Home feature, Parking brake, No special purpose vehicle- standard equipment, Without additional noise suppression measures for passenger compartment, Alternator 140 A, Weight range 6 installation control only- no requirement forecast, Suspension range 10 installation control only- no requirement forecast, 4-cylinder SI engine 1.5 l unit 05E.D, Without tie down straps/net/pocket, Adaptive cruise control (with "follow-to-stop") and speed limiter, Additional exterior noise suppression, 7-speed automatic transmission, Without bracket, Rear spoiler, Rear window wiper and washer system with intermittent control, Folding grab handles- multi-piece, Standard rear axle, Rear axle weight- type 1, Unsplit rear seat bench- split folding backrest- with center armrest, Climatronic with impact pressure control- CFC-free, LED headlamps, Without electric motor (hybrid), Without interior light in footwell, Instrument cluster- km/h speedometer, Inside rear view mirror automatically dimming, MPV, With multifunction camera, Luggage compartment floor covering in flat needle-punched nonwoven, Manual child safety lock, Without storage compartments in trunk, Without folding table on front seat backrest, Standard climatic zones, Without dynamic road sign display, 3rd rear headrest, Front head restraints, Initial standard fuel filling, Fuel system for fuel-injected SI engine, Without special body measures, Without child seat anchora in front (ISOFIX), Without camera systems/accident sensors, Radiator grille, Refrigerant R1234yf, Transport protection film with additional transport protection measures, Standard paint coating, Without luggage/load compartment floor, Without add. lights (interior lighting), Without vehicle inlet, Left-hand drive, Two reading lights in front- two in rear, Speed-related variable steering assist (Servotronic), Without backrest release for front seats, Curb weight range 1, Without light control, Driver and passenger seat with lumbar support, 2 spoke multi-function leather steering wheel with heating and with DSG paddles, Driving on the right, Additional 4 loudspeakers rear, Air cleaner for dusty regions, Headlight range control, Front armrest "JUMBO BOX", Basic equipment variant, "Virtual Cockpit", "DRIVER ALERT" - driver alert system, Not hot country, 4-cylinder SI engine 1.5 l/110 kW TSI base engine is TJ7/N09/T9F/T57/T0D, Radio Bolero, Rear fog lamp, Front fog lights, Remote Access / Remote Access + Online Infotainment, Rear floor panel module- type 7, Aero hubcaps black, Alloy wheels "PROCYON" 7J x 18" - 4 pcs, Infotainment Bolero/Amundsen/Columbus (MIB3), Non-smoker's package, Regional code " ECE " for radio, Tyre pressure monitoring, Tires 215/50 R18 92W, Tires without specification of tire brand, Breakdown kit, Wheelbase, 3-point seat belts in front- with tensioner and height adjustment, Emergency call system eCall+, Curtain airbags and side airbags front, Gearshift knob/handle in leather, LED rear combination lamp- variable lighting functions- special styling, Tailgate/trunk lid release from inside (electrically), Service indicator 30 000 km or 2 years ( variable ), Passenger seat-belt warning light (for all passengers), 3-point seat belts- outer rear with ECE label, Seat trim covers in fabric, Manual height adjustment for front seats, Heated front seats, Key for locking system with remote control, Start-stop system with regenerative braking, Two-tone horn, Sun visors with illuminated vanity mirror on driver and front passenger side, Voice control, Without lane change assist, Lane Assist (without HOD), "SUNSET", Without supertone system and tone sequence control, 12-volt socket in luggage boot, Standard bumpers, Without rear stabilizer bar, Front stabilizer bar, Headlamp washer system, Windshield wiper intermittent control with light/rain sensor, Without mud flap, Nameplate set in basic style, Fuel filler cap, "KESSY FULL" with SAFE system, Type approval country Denmark, Carrier frequency 433.92 MHz-434.42 Mhz, Without partition, Door and side trim panel, 4 doors, DAB - Digital radio reception, Without additional front underbody guard, Special identification label for EC for M1 passenger vehicles, Without delivery equipment, Comfort seats in front, Mechanical rear seat release, Comfort telephony with LTE and wireless charging, Additional retro-reflectors (door area), LongLife Service Regime, Without heat accumulator/auxiliary heater, Heat-reflecting windshield, Washer fluid level indicator, Textile floor mats, Bright decorative trims, Wheel arches, Child seat anchors for child seat system ISOFIX, Without auxiliary heater/parking heater, Equipment options subset for Denmark

**PICTURES**



**Picture viewer:** <https://fm.bilsalg.dk/business/picturebrowser?t=full&guid=886fdda8-a818-4e66-91ff-d686d00013e4&carid=20596108>

## OVERVIEW OF DAMAGES AND SHORTAGES

| N° | LOCATION               | TYPE  | SEVERITY  | INSURANCE | NOTES            | DAMAGE GROUP |
|----|------------------------|---|---|-----------|------------------|--------------|
| 1  | R. Rear Door, Inside   | Scratch   | C4  |           | Reporting needed |              |
|    |                        |  |  |           |                  |              |
| 2  | R. Front Quarter Panel | Dent  | C3  |           |                  |              |
|    |                        |  |  |           |                  |              |

Severity explanation:

C0 = No damage / C1 = Simple preparation / C2 = Minor preparation needed / C3 = Can be smart repaired / C4 = Repair/spray paint / C5 = Need replacement

## ELECTRICAL AND MECHANICAL CONDITION

| N° | LOCATION            | TYPE | NOTES |
|----|---------------------|------|-------|
| 1  | Is the car drivable | Yes  |       |