

VEHICLE DESCRIPTION - VW Polo Style 1.0 TSI



First registration date:
6/2023

VIN:
WWWZZAWZPU049056

Colour:
Gray Metallic Normal gloss

Mileage (km):
76.269

Gear:
Automatic (7 Gears)

Fuel type:
Gasoline

Body type:
Hatchback

Number of doors:
5

Drive type:
FWD

Model year:
2021

Engine power:
81 kW

Number of seats:
5

Engine size (cc):
999

Interior:
Dark grey Fabric

VEHICLE DETAILS

Number of keys:
2

Number of license plates:
2

Registration certificate:
Part 1 present

Service documentation:
Yes

Inspection date:
16-06-2026

Last service (year/month):
2025/11

Mileage (km) at last service:
60.443

SUMMARY OF THE VEHICLE'S CONDITION

Is the car in a driveable condition:
Yes

Legal tire tread (minimum 1.6 mm):
Yes

WHEELS

TYPE	SEASON	BRAND	POSITION	RIM	SIZE	TREAD
Fitted	Summer tires		Front Left	Alloy rim	15"	6 mm
Fitted	Summer tires		Rear Right	Alloy rim	15"	6 mm
Fitted	Summer tires		Rear Left	Alloy rim	15"	6 mm
Fitted	Summer tires		Front Right	Alloy rim	15"	6 mm

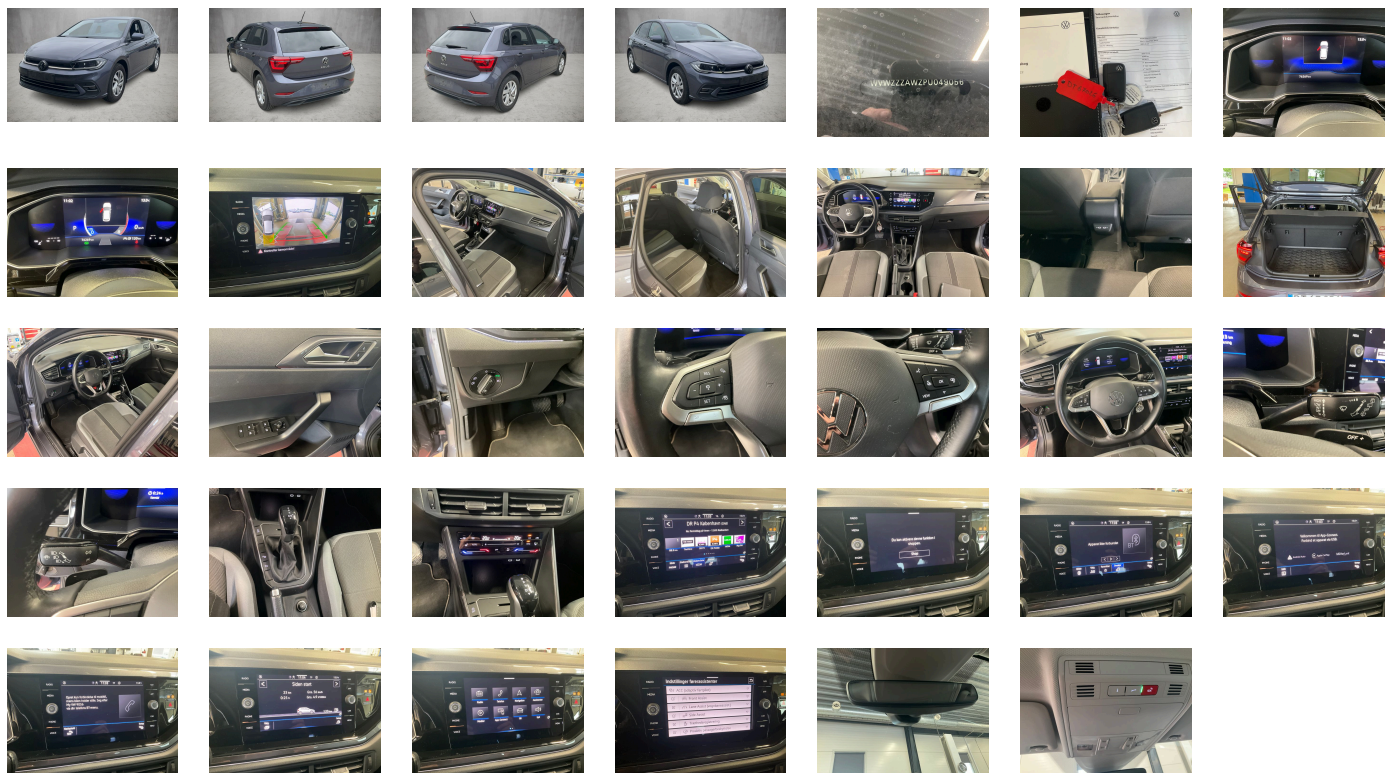
Legal tire tread (minimum 1.6 mm):

Yes

ACCESSORIES


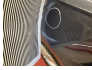
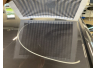






Rear overhang- short, 4 doors, Front stabilizer bar, Wheelbase, Dual-clutch transmission DSG DQ200, South Africa manufacturing sequence, Without alternative drive system, Without decals and emblems, Standard rear axle, Elimination of nameplate for engine designation on luggage compartment lid, Rear exhaust tailpipe (standard), Carpet mats in front and rear, Manual in Danish, Standard climatic zones, Weight range 8 installation control only- no requirement forecast, Fuel system for fuel-injected SI engine, Electronic Stability Control w/ driver steering recommendation- ABS- ASR- EDL and EDTC, Without trailer hitch, Activated carbon canister (Evaporative Emission Control System (EVAP)), Special identification label for EC for M1 passenger vehicles, Tire Mobility Set: 12-volt compressor and tire sealant, Rear shock absorption, Disc brakes in rear, Power steering, Trims for alloy wheels, Standard wheel bolts, Tool kit and jack, Without additional front underbody guard, Warning triangle, Vehicle class differentiation - 2G0- for build status Europe, Front-wheel drive, Without differential lock, Initial standard fuel filling, Disc brakes in front, Delivery equipment- water border, Height and longitudinally adjustable steering column, Leather multi-function steering wheel with shifting paddles, Without Adaptive Chassis Control, Body-colored bumpers- radiator grille and air intake with chrome trim, Fresh air intake system with combination filter, Without additional tires, License plate carrier in front and rear (ECE), ISOFIX anchors for child seats on outer rear bench seats and on front passenger seat- compatible for i-Size, 3-point seat belt for center rear seat, Without roof insert (standard roof), Luggage compartment floor, Non-folding front passenger seat backrest, Front seats with height adjustment, Unsplit rear bench seat- asymmetric split folding backrest, 3 head restraints in rear, 3-point seat belts in front with height adjustment and seat belt pretensioners, Luggage compartment cover, 3-point seat belts with seat belt pretensioners for the outer rear seats, Heated front seats, Door and side trim panel, Emission standard EU6 AP, Laminated safety glass windshield- heat-insulating, Central locking system without SAFELock- with radio remote control and 2 remote control folding keys, Privacy glass for rear side windows and rear window, Auto-dimming interior rearview mirror, Foamed dashboard, Rear floor panel module- type 1, Power windows, Map pockets on the back of each front seat, Driver and front passenger airbag with front passenger airbag deactivation, Without adhesive film, Without special body measures, Carrier frequency 433.92 MHz-434.42 Mhz, Transport protection film (minimum protection) with additional transport protection measures, Decorative inserts "Deep Iron Gray" for dashboard and front door trim panels, Right exterior mirror- convex, Aspherical exterior mirror on driver side, Illuminated vanity mirrors in sun visors, Safety-optimized front head restraints, Curtain airbags in front and rear- side airbags in front- center airbag, Front center armrest- longitudinally adjustable- with storage compartment, Body-colored exterior mirror housings and door handles, Semi-automated driving assistance Travel Assist and lane keeping system Lane Assist, Autonomous Emergency Braking Front Assist (for Adaptive Cruise Control ACC up to 210 km/h), Ceramique headliner, Hand brake lever handle in leather, Gearshift knob in leather, Light unit in front footwell, Exterior mirrors- power-adjustable- folding and heated- w/ front passenger exterior mirror lowering function, Electronic immobilizer, Without heat accumulator/auxiliary heater, Multi-color Digital Cockpit- selection of different info profiles possible, Tire Pressure Monitoring System, Start-stop system with regenerative braking, Without protective film for scuff plate, Lumbar supports in front, Preparation for subsequent activation: Navigation feature "Discover Media" incl. Streaming & Internet, Proactive passenger protection system in combination with Front Assist, Park Assist with Park Distance Control, Lane change system Side Assist and Rear Traffic Alert, Radio, Without second battery, Advanced high-beam control Dynamic Light Assist for LED matrix headlamps, Alternator 140 A, IQ.LIGHT - LED matrix headlamps with LED separate daytime running light, Rear window wiper with intermittent control, Rain sensor, Dynamic headlight range control, 6 speakers, LED interior lights with switch-off delay and dimmer- 2 LED reading lights in front and 2 in rear, Adaptive Cruise Control ACC stop & go incl. speed limiter, Rear fog lamp for driving on the right, LED rear combination lamps with dynamic turn signal, Warning lamp for washer fluid level, Front fog lamps and cornering light, Without headlamp washer system, Single-tone horn, Not hot country, Diversity antenna for FM reception, Air Care Climatronic 2 zone automatic climate control with enhanced air filter with activated carbon, Luggage compartment lighting, Automatic headlight control with exit and entry lighting, Non-smoker's package: Storage compartment and 12 V outlet in front, Without auxiliary heater/parking heater, Warning signal and warning light for front and rear seat belts not fastened, Without heated washer nozzles, App-Connect incl. App-Connect Wireless for Apple CarPlay and Android Auto, Mobile phone interface, Style, Driving on the right, "Standard Plus" version, Type approval country Denmark, Part set without country-specific prescriptive standard, Operating permit- alteration, 3-cylinder SI engine 1.0 l TSI- 81 kW, No special edition, Without ECO function, Online service- with OCU- with head unit coding- without engine immobilizer interconnection, Driver alert system, Regional code " ECE " for radio, No special purpose vehicle- standard equipment, Shock absorption in front, 7-speed automatic transmission or dual-clutch transmission DSG- note: PR family EDF, Vehicles with special upgrade measures, Battery 320 A (49 Ah), Tires 185/65 R15 low rolling resistance, Hatchback, Rear view camera system, Refrigerant R1234yf, Suspension range 06 installation control only- no requirement forecast, Left-hand drive, Inserts of front seats and outer rear seats in fabric "Style", Standard battery/alternator capacity, Emergency call service, no registration required- service is activated upon delivery, Park & Convenience assistance package, IQ.DRIVE assistance systems package, Sports comfort seats in front, LongLife Service Regime, Without voice control, Service indicator 30 000 km or 2 years (variable), Ambient lighting, Chrome elements on power mirror and window regulator switches- on front vents on driver and fr. passenger side, Multifunction camera, Storage compartment for Manual under left front seat, Without dynamic road sign display, Digital radio reception DAB+, Radio "Ready 2 Discover" incl. "Streaming & Internet", 3-cylinder SI engine 1.0 l, 4 alloy wheels "Ronda" 5.5J x 15- painted in Adamantium Silver, Instrument cluster with electronic speedometer- odometer and trip odometer- tachometer, 2 USB-C ports in the front- 2 USB-C charging sockets on the center console in rear- charging capacity up to 45 W, Illuminated molding between headlamps, Hill start assist, Tires without specification of tire brand, Standard pedal cluster, Pedestrian and cyclist monitoring, Denmark: DK package Basic forces: WLA-WF1-4KF, Style/GTI: WLB-9AK-4KF, Life/R-Line: WLA-9AK-4KF, Lights & Vision package, VE: special goodwill 2023 I, Preparation for We Connect and We Connect Plus, Equipment options subset for Denmark

PICTURES



Picture viewer: <https://fm.bilsalg.dk/business/picturebrowser?t=full&guid=35628210-7c21-4b7c-aba1-2fca1c861759&carid=20589767>

OVERVIEW OF DAMAGES AND SHORTAGES

N°	LOCATION	TYPE	SEVERITY	INSURANCE	NOTES	DAMAGE GROUP
1	L. Front Quarter Panel	Dent	C3			
						
2	Roof	Dent	C3			
						
3	Rear Bumper	Scratch	C3			
						
4	L. Rear Door	Dent	C3			
						

Severity explanation:

C0 = No damage / C1 = Simple preparation / C2 = Minor preparation needed / C3 = Can be smart repaired / C4 = Repair/spray paint / C5 = Need replacement

ELECTRICAL AND MECHANICAL CONDITION

N°	LOCATION	TYPE	NOTES
1	Is the car drivable	Yes	