

VEHICLE DESCRIPTION - Audi Q2 Prestige 1.5 35 TFSI



First registration date:
6/2023

VIN:
WAUZZZGA0PA034408

Colour:
null Metallic Normal gloss

Mileage (km):
26.602

Gear:
Automatic (7 Gears)

Fuel type:
Gasoline

Body type:
SUV

Number of doors:
5

Drive type:
FWD

Model year:
2020

Engine power:
110 kW

Number of seats:
5

Engine size (cc):
1498

Interior:

VEHICLE DETAILS

Number of keys:
2

Number of license plates:
2

Registration certificate:
Part 1 present

Service documentation:
Yes

Inspection date:
24-06-2026

Last service (year/month):
2025/7

Mileage (km) at last service:
21.513

SUMMARY OF THE VEHICLE'S CONDITION

Is the car in a driveable condition:
Yes

Legal tire tread (minimum 1.6 mm):
Yes

WHEELS

 TYPE	SEASON	BRAND	POSITION	RIM	SIZE	TREAD
Fitted	Summer tires		Front Left	Alloy rim	17"	5 mm
Fitted	Summer tires		Rear Right	Alloy rim	17"	5 mm
Fitted	Summer tires		Rear Left	Alloy rim	17"	5 mm
Fitted	Summer tires		Front Right	Alloy rim	17"	5 mm

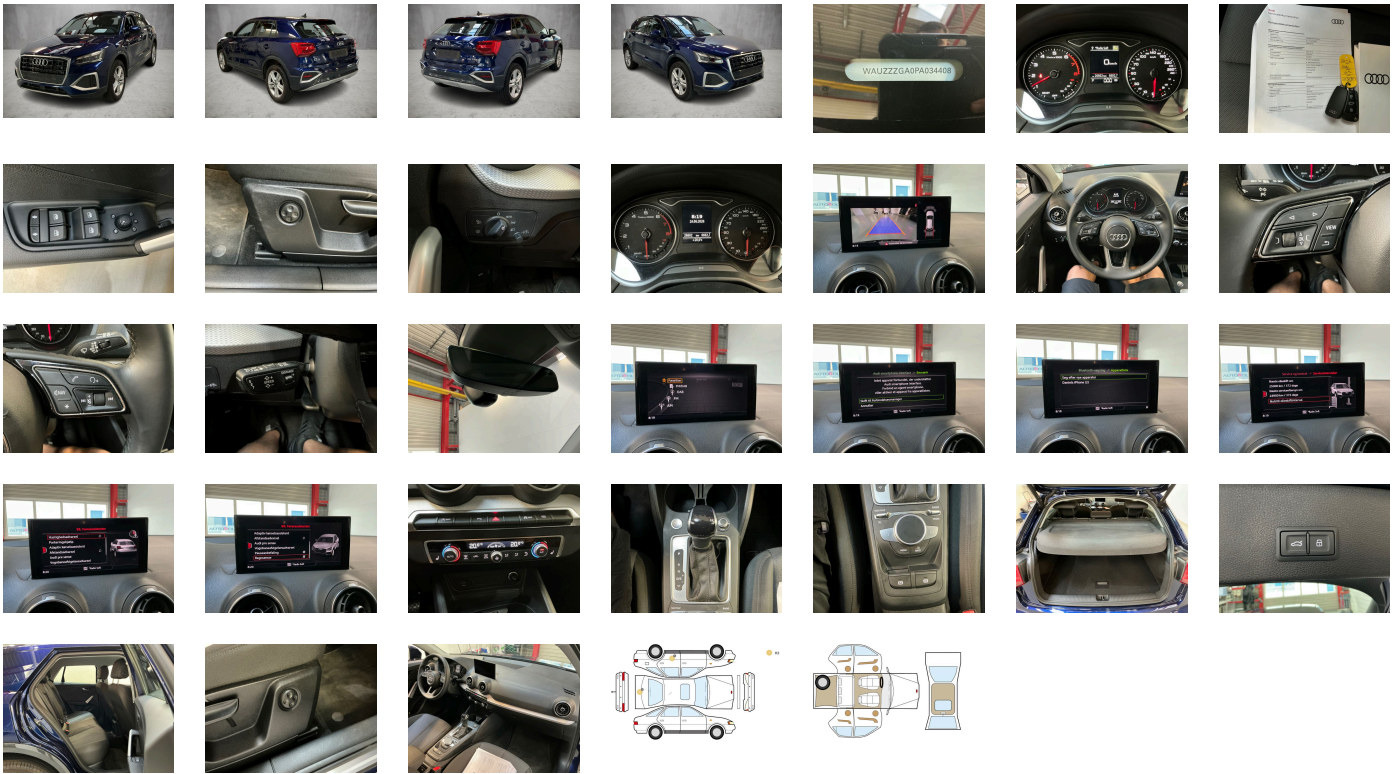
Legal tire tread (minimum 1.6 mm):

Yes

ACCESSORIES





5 doors, Front stabilizer bar, Wheelbase, Without rear stabilizer bar, Standard, Installation differentiation for transmission DQ200 -- vehicle components --, Standard manufacturing sequence, Without alternative drive system, With special labels safety certificates for Denmark, Vehicle class differentiation -GA0-, Standard rear axle, Exhaust tailpipes, Floor mats- front and rear, Without special color trim, Manual in Danish, Standard climatic zones, Weight range 3 installation control only- no requirement forecast, Fuel system for fuel-injected SI engine, Electronic Stabilization Control ESC, Activated carbon canister (Evaporative Emission Control System (EVAP)), Special identification label (EU), Tire repair kit, Standard suspension, Preparation for trailer hitch, Progressive steering, Standard wheel bolts, Vehicle tool kit, Without additional front underbody guard, First-aid kit with warning triangle, Without folding table on front seat backrest, Without refrigerator/glove compartment cooling system, Front-wheel drive, Leather steering wheel- 3-spoke with multifunction plus, Initial standard fuel filling, Disk brakes- front- 15-inch, Without electric motor (hybrid), Disk brakes- rear- 15-inch, Without Audi drive select, Bumpers- advanced- in contrasting paint finish, Labels in English and German, Without additional tires, Model name as per new output designation, ISOFIX and top tether for outer rear seats, Without partition, Without roof insert (standard roof), ISOFIX child seat mounting for the front passenger seat, Without backrest release for front seats, Front passenger seat- height-adjustable, Rear seat backrest- folding, Omission of roof rails, Three rear head restraints, Wheels- 5-twin-spoke- 7.0J x 17- 215/55 R17 tires, Seat heating- front, Emission standard EU6 AP, Luggage compartment lid- electrically opening and closing, Windshield with gray tinted sunshield, Child-proof lock- electrically operated, Convenience key- without Safelock, Rear and side windows with heat-insulating glazing, Interior mirror- automatically dimming- frameless, Rear floor panel module- type 7, Window controls, Airbags- front, front passenger airbag can be deactivated, Side airbags- front and head airbag system, Standard trim strips, Without special body measures, Carrier frequency 433.92 MHz-434.42 Mhz, Roof spoiler, Adhesive film, Inlays- diamond paint finish- Silver Gray, Exterior mirrors on the right- (large field of view)- convex, Left exterior mirror- aspherical, Head restraints- front, Without fire extinguisher, Comfort center armrest- front, Without decorative films/emoles, Exterior mirror housings in body color, Sideblades in body color, Lane departure warning, Audi pre sense front for adaptive cruise control, Headlining in cloth in specific color, Luggage compartment mat, Rear trim panel (ECE), Front license plate carrier, Exterior mirrors- electrically adjustable- heated and folding- automatically dimming on both sides, Electronic immobilizer, Without heat accumulator/auxiliary heater, Gearshift/selector lever handle, Without preparation for VTS (vehicle tracking system), Without leather, Tire pressure loss indicator, Start-stop system with recuperation, Door sill trims with aluminum inlays- front, 4-way lumbar support for the front seats, Without wind deflector, Navigation preparation, Without extended safety system, Parking system plus, Without lane change assist, Matrix LED headlights with dynamic light sequencing and dynamic turn signal, Alternator 140 A, Matrix LED headlights with dynamic light sequencing and dynamic turn signal, Separate daytime running light, Rear window wiper and washer system with intermittent control, 6 loudspeakers, Adaptive cruise control, Rear fog lamps, LED rear lights with dynamic turn signal, Washer fluid level indicator, Without headlamp washer system, Two-tone horn, Not hot country, Deluxe automatic air conditioning, Non-smoker's package, Without neck heating, Without auxiliary heater/parking heater, Seat belt reminder, Driver information system with color display, Brake pad wear indicator, Audi phone box light, No self-collection, Audi AG, advanced, Standard-production quality, Driving on the right, Type approval country Denmark, Part set without country-specific prescriptive standard, Operating permit- alteration, 4-cylinder SI engine 1.5 l/110 kW TSI base engine is TJ7/N09/T9F/T57/T0D, No special edition, Without ECO function, Audi connect remote & control (for MMI radio plus), Regional code " ECE " for radio, Without vehicle inlet, Without charging cable, No special purpose vehicle- standard equipment, Control of series production, Without customized installation, Basic equipment variant, Production wheels, Shock absorption in front, S tronic, Without antenna amplifier, Vehicles with special upgrade measures, Tires 215/55 R17 94V, Infotainment computer, Without Audi connect navigation & infotainment, SI engine, Battery 420 A (70 Ah), Box, Reversing camera, Refrigerant R1234yf, Without head-up display, Suspension range 04 installation control only- no requirement forecast, Left-hand drive, 4-cylinder SI engine 1.5 l unit 05E.D, Script cloth, Transit coating (type 1), Standard battery/alternator capacity, Without call feature, Matrix LED headlights and LED rear lights, Comfort package plus, Infotainment package connectivity, Assist package Park, Standard seats- front, Without Storage package, LongLife Service Regime, Service indicator 30 000 km or 2 years (variable), Without aluminum look in the interior, With multifunction camera, Interior lighting, Without dynamic road sign display, Digital Audio Broadcasting, Control of special edition prices, Instrument cluster- km/h speedometer, Hold assist, Smartphone interface, Standard rear seat release, Tires without specification of tire brand, Standard pedal cluster, Extended and proactive pedestrian and cyclist protection, Equipment package for Denmark, Equipment package for Denmark, Internal control code, Internal control code, Internal control code, Equipment options subset for Denmark

PICTURES



Picture viewer: <https://fm.bilsalg.dk/business/picturebrowser?t=full&guid=7bc64f87-0ff6-4442-b87a-37300b3846b0&carid=20567792>

OVERVIEW OF DAMAGES AND SHORTAGES

N°	LOCATION	TYPE	SEVERITY	INSURANCE	NOTES	DAMAGE GROUP
1	Rear Hood 	Dent 	C3			
2	L. Rear Door 	Scratch 	C3			

Severity explanation:

C0 = No damage / C1 = Simple preparation / C2 = Minor preparation needed / C3 = Can be smart repaired / C4 = Repair/spray paint / C5 = Need replacement

ELECTRICAL AND MECHANICAL CONDITION

N°	LOCATION	TYPE	NOTES
1	Is the car drivable	Yes	