

VEHICLE DESCRIPTION - VW T-Cross Life Plus 1.0 TSI



First registration date:
6/2023

VIN:
WVGZZC1ZPY110169

Colour:
Beige Normal gloss

Mileage (km):
16.474

Gear:
Automatic (7 Gears)

Fuel type:
Gasoline

Body type:
SUV

Number of doors:
5

Drive type:
FWD

Model year:
2018-2024

Engine power:
81 kW

Number of seats:
5

Engine size (cc):
999

Interior:
Black Fabric

VEHICLE DETAILS

Number of keys:
2

Number of license plates:
2

Registration certificate:
Part 1 present

Service documentation:
Yes

Inspection date:
24-06-2026

Last service (year/month):
2025/7


Mileage (km) at last service:
12.239

SUMMARY OF THE VEHICLE'S CONDITION

Is the car in a driveable condition:
Yes

Legal tire tread (minimum 1.6 mm):
Yes

WHEELS

 TYPE	SEASON	BRAND	POSITION	RIM	SIZE	TREAD
Fitted	Summer tires		Front Left	Alloy rim	16"	6 mm
Fitted	Summer tires		Rear Right	Alloy rim	16"	6 mm
Fitted	Summer tires		Rear Left	Alloy rim	16"	6 mm
Fitted	Summer tires		Front Right	Alloy rim	16"	6 mm

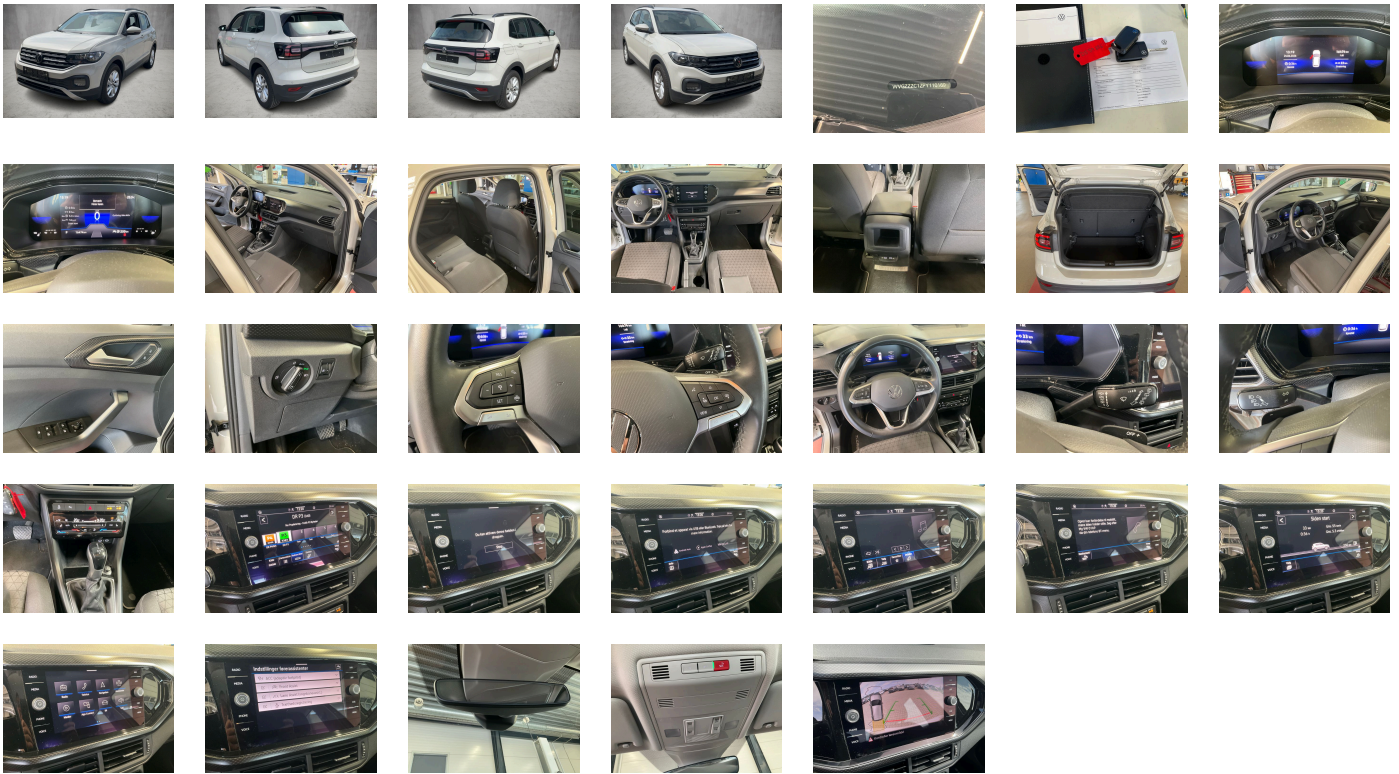
Legal tire tread (minimum 1.6 mm):

Yes

ACCESSORIES

Rear overhang- short, 4 doors, Front stabilizer bar, Wheelbase, Dual-clutch transmission DSG DQ200, Pamplona manufacturing sequence, Without alternative drive system, Without decals and emblems, Standard rear axle, Elimination of nameplate for engine designation on luggage compartment lid, Rear exhaust tailpipe (standard), Without floor mats, Manual in Danish, Standard climatic zones, Weight range 14 installation control only- no requirement forecast, Fuel system for fuel-injected SI engine (tropicalized), Electronic Stability Control w/ driver steering recommendation- ABS- ASR- EDL- EDC and trailer stabilization, Without trailer hitch, Activated carbon canister (Evaporative Emission Control System (EVAP)), Special identification label for EC for M1 passenger vehicles, Tire Mobility Set: 12-volt compressor and tire sealant, Rear shock absorption- heavy-duty version, Disc brakes in rear, Power steering, Trims for alloy wheels, Standard wheel bolts, Without tool kit and jack, Without additional front underbody guard, Warning triangle, Front-wheel drive, Initial standard fuel filling, Disc brakes in front, Without delivery equipment, Height and longitudinally adjustable steering column, Vehicle class differentiation -2GC-, Leather multi-function steering wheel with shifting paddles, Without Adaptive Chassis Control, Body-colored bumpers- radiator grille with chrome trim and fin, Fresh air intake system with combination filter, Without additional tires, License plate carrier in front and rear (ECE), ISOFIX anchors for child seats on outer rear bench seats and on front passenger seat- compatible for i-Size, 3-point seat belt for center rear seat, Without roof insert (standard roof), Luggage compartment floor adjustable in 2 heights, Completely folding front passenger seat backrest, Front seats with height adjustment, Unsplit rear bench seat- sliding- asymmetric split folding backrest, 3 head restraints in rear, 3-point seat belts in front with height adjustment and seat belt pretensioners, Black roof rails, Luggage compartment cover, 3-point seat belts with seat belt pretensioners for the outer rear seats, 4 alloy wheels "Belmont" 6J x 16, Heated front seats, Door and side trim panel, Emission standard EU6 AP, Laminated safety glass windshield- heat-insulating, Central locking system without SAFELOCK- with radio remote control and 2 remote control folding keys, Green heat-insulating glass windows on sides and in rear, Auto-dimming interior rearview mirror, Rear floor panel module- type 1, Power windows, Map pockets on the back of each front seat, Driver and front passenger airbag with front passenger airbag deactivation, Curtain airbag system for front and rear passengers incl. side airbags in front, Glove compartment door with light, Black decorative trims, Without adhesive film, Carrier frequency 433.92 MHz-434.42 Mhz, Transport protection film (minimum protection) with additional transport protection measures, Decorative inserts "Pineapple" for dashboard, Right exterior mirror- convex, Aspherical exterior mirror on driver side, Vanity mirrors in sun visors, Safety-optimized front head restraints, Front center armrest- longitudinally adjustable- with storage compartment- 2 USB charging sockets in rear, Body-colored exterior mirror housings and door handles, Lane keeping system Lane Assist, Autonomous Emergency Braking Front Assist (for Adaptive Cruise Control ACC up to 210 km/h), Headliner, Hand brake lever handle in leather, Gearshift knob in leather, Without interior light in footwell, Without additional seals outside, Exterior mirrors- power-adjustable- folding and heated- w/ front passenger exterior mirror lowering function, Electronic immobilizer, Without heat accumulator/auxiliary heater, Multi-color Digital Cockpit- selection of different info profiles possible, Tire Pressure Monitoring System, Start-stop system with regenerative braking, Without protective film for scuff plate, Without lumbar support in seat backrests, Preparation for subsequent activation: Navigation feature "Discover Media" incl. Streaming & Internet, Without extended safety system, Park Distance Control - warning signals for obstacles in the front and rear, Without lane change assist, Radio, Without second battery, Without light control, Alternator 140 A, Halogen headlamps and turn signal lamps under one clear lens, Aut. headlight control with separate daytime running light- entry lighting and manual exit lighting, Rear window wiper with intermittent control, Rain sensor, Headlight range control, 6 speakers, Interior lights with switch-off delay and dimmer- 2 reading lights in front and rear, Adaptive Cruise Control ACC stop & go incl. speed limiter, Rear fog light on one side- back-up light on both sides, LED rear combination lamps (except turn signals and back-up lamps), Warning lamp for washer fluid level, Without front fog lamps, Without headlamp washer system, Single-tone horn, Not hot country, Diversity antenna for FM reception, Air Care Climatronic 2 zone automatic climate control with enhanced air filter with activated carbon, Luggage compartment lighting, Non-smoker's package: 12-V outlet in front, Warning signal and warning light for front and rear seat belts not fastened, Automatically-heated washer nozzles in front, Without "Multimedia" in vehicle, Mobile phone interface, Category 0, Executive equipment, Driving on the right, "Standard Plus" version, Type approval country Denmark, Part set without country-specific prescriptive standard, Operating permit- alteration, 3-cylinder SI engine 1.0 l TSI- 81 kW, No special edition, Without ECO function, Online service- with OCU- with head unit coding- without engine immobilizer interconnection, Driver alert system, Regional code " ECE " for radio, No special purpose vehicle- standard equipment, Shock absorption in front, 7-speed automatic transmission or dual-clutch transmission DSG- note: PR family EDF, Vehicles without special upgrade measures, Battery 320 A (49 Ah), Tires 205/60 R16- low rolling resistance, Hatchback, Rear view camera system, Refrigerant R1234yf, Left-hand drive, Suspension range 26 installation control only- no requirement forecast, Inserts of front seats and outer rear seats in fabric "Life", Standard battery/alternator capacity, Emergency call service, no registration required- service is activated upon delivery, Without proactive passenger protection system, Adaptive Cruise Control ACC up to 210 km/h and Autonomous Emergency Braking Front Assist, Lights & Vision package, Standard seats in front, LongLife Service Regime, Without voice control, Service indicator 30 000 km or 2 years (variable), Without aluminum/chrome package, Multifunction camera, Drawer under right front seat, Without add. lights (interior lighting), Without dynamic road sign display, Digital radio reception DAB+, Radio "Ready 2 Discover" incl. "Streaming & Internet", Control of campaigns, Equipment change, 3-cylinder SI engine 1.0 l, Instrument cluster with electronic speedometer- odometer and trip odometer- tachometer, 2 USB-C ports in the front- 2 USB-C charging sockets on the center console in rear- charging capacity up to 45 W, Hill start assist, Tires without specification of tire brand, Standard pedal cluster, Pedestrian and cyclist monitoring, Denmark: DK Package TL forces PLA-WW1-PH3 CL/HL forces PLA-KA1-PH3, Winter package, Preparation for We Connect and We Connect Plus, Equipment options subset for Denmark

PICTURES



Picture viewer: <https://fm.bilsalg.dk/business/picturebrowser?t=full&guid=47007af5-615b-40ae-acab-fa95e86e270f&carid=20549894>

OVERVIEW OF DAMAGES AND SHORTAGES

No damages or shortages

ELECTRICAL AND MECHANICAL CONDITION

N° LOCATION	TYPE	NOTES
1	Is the car drivable	Yes