

**VEHICLE DESCRIPTION - Audi A5 Prestige Plus 2.0 40 TFSI MHEV**



<b>First registration date:</b> 6/2023	<b>VIN:</b> WAUZZZF52PA058052
<b>Colour:</b> Dark gray Metallic Normal gloss	<b>Mileage (km):</b> 123.522
<b>Gear:</b> Automatic (7 Gears)	<b>Fuel type:</b> Hybrid petrol
<b>Body type:</b> Hatchback	<b>Number of doors:</b> 5
<b>Drive type:</b> FWD	<b>Model year:</b> 2020-2024
<b>Engine power:</b> 150 kW	<b>Number of seats:</b> 5
<b>Engine size (cc):</b> 1984	<b>Interior:</b> Dark grey Leather seating surfaces


**VEHICLE DETAILS**

<b>Number of keys:</b> 2	<b>Number of license plates:</b> 0	<b>Registration certificate:</b> Part 1 & 2 present	<b>Service documentation:</b> No
<b>Inspection date:</b> 08-06-2026	<b>Last service (year/month):</b>	<b>Mileage (km) at last service:</b>	

**SUMMARY OF THE VEHICLE'S CONDITION**

<b>Is the car in a driveable condition:</b> Yes	<b>Legal tire tread (minimum 1.6 mm):</b> Yes
--	--

## WHEELS

 TYPE	SEASON	BRAND	POSITION	RIM	SIZE	TREAD
Fitted	Winter tires		Front Left	Alloy rim	18"	5 mm
Fitted	Winter tires		Rear Right	Alloy rim	18"	6 mm
Fitted	Winter tires		Rear Left	Alloy rim	18"	6 mm
Fitted	Winter tires		Front Right	Alloy rim	18"	5 mm

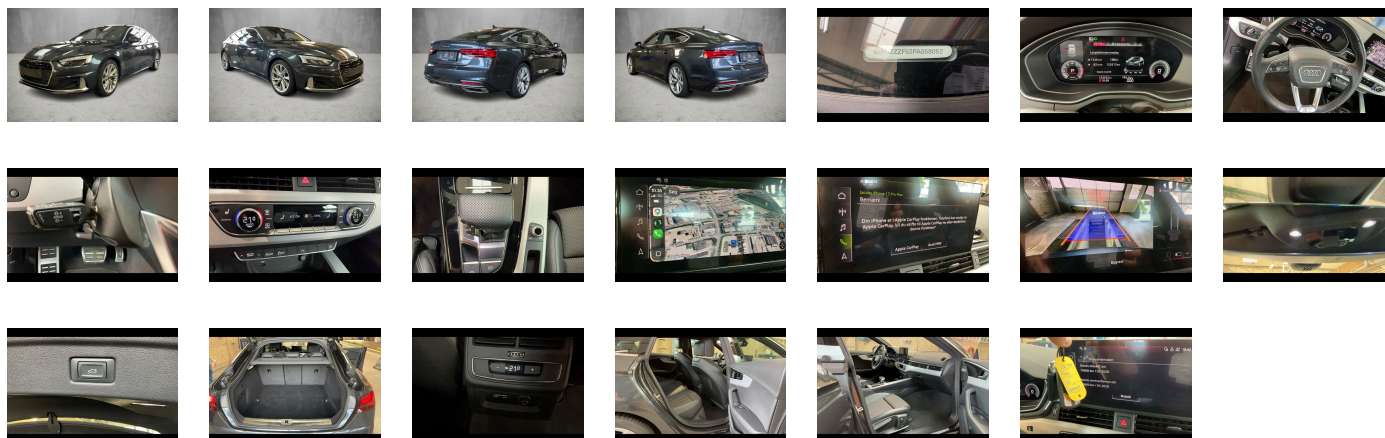
### Legal tire tread (minimum 1.6 mm):

Yes

## ACCESSORIES





Basic, Standard, Standard manufacturing sequence, tiptronic, Weight category front axle weight range 7, Mild hybrid, With special labels safety certificates for Denmark, Fuel tank with increased capacity, Standard exhaust system, Without ignition/starter switch locking system- without steering lock, Floor mats- front and rear, Without special color trim, Manual in Danish, Standard climatic zones, Weight range 6 installation control only- no requirement forecast, Fuel system for SI engine with direct injection (FSI), Standard suspension, Preparation for trailer hitch, Special identification label (EU), Tire repair kit, Disk brakes- rear- 16-inch (ECE), Disk brakes- front- 16-inch (ECE), Standard wheel bolts, Tool kit, Without additional front underbody guard, First-aid kit with warning triangle and high-visibility vests, Installation parts for four-cylinder engine, Front-wheel drive, Leather steering wheel- 3-spoke with multifunction plus, Initial standard fuel filling, Without locking and starting systems, Insert for the filling up of unleaded fuel, Audi drive select, Bumpers- advanced, Labels in English and German, Without additional tires, Omission of model name and output/technology logo, ISOFIX child seat mounting and top tether for the rear seats, Without roof insert (standard roof), Without child seat anchora in front (ISOFIX), Without luggage/load compartment floor, Without backrest release for front seats, Front seats- manually adjustable, Passenger car design, Rear seat system- 3-seater, Omission of roof rails, Without roll-up sunshade, Seat heating- front, Emission standard EU6 AP, Without seat ventilation/massage seat, Luggage compartment lid- electrically opening and closing, Windshield with heat-reflecting glass and acoustic glass, Manual child safety lock, Remote control key (without Safelock), Rear and side windows with heat-insulating glazing, Interior mirror- automatically dimming- frameless, Airbags- front, front passenger airbag can be deactivated, Side airbags- front and head airbag system, Gloss package, Luggage compartment trim (design 2), Without special body measures, Carrier frequency 433.92 MHz-434.42 Mhz, Without rear spoiler, Adhesive film, Without front spoiler, Exterior mirrors on the right- (large field of view)- convex, Left exterior mirror- aspherical, Inlays- Matt Brushed Aluminum, Sun visors- front, Variable head restraints for the front seats, Without fire extinguisher, Comfort center armrest- front, Without additional side body covers (stone guard), Emblems, Exterior mirror housings in body color, Roof in body color, Audi active lane assist, Body-colored door handles, Audi pre sense city, Headlining in cloth- Black, Luggage compartment mat, Rear trim panel (ECE), Front license plate carrier, Exterior mirrors- electrically adjustable- heated and folding- automatically dimming on both sides, Top speed limited to 210 km/h, Electronic immobilizer, Without heat accumulator/auxiliary heater, Without preparation for VTS (vehicle tracking system), Without leather, Vehicle class differentiation -8WB/8WC/8WF-, Tire pressure loss indicator, Start-stop system, Without wind deflector, MMI navigation plus with MMI touch, Audi pre sense rear and basic, Parking system plus, Side assist, Matrix LED headlights with dynamic turn signal, Lumbar support- pneumatically adjustable with massage function for the front seats, Matrix LED headlights with dynamic turn signal, Separate daytime running light, 8 loudspeakers, Audi adaptive cruise control, LED rear lights plus, Without headlamp washer system, Two-tone horn, Not hot country, 3-zone deluxe automatic air conditioning, Without integrated toll system, Belt-driven integrated starter alternator 12 V- 130 - 200 A, USB charging interfaces in the rear, Without neck heating, Without auxiliary heater/parking heater, Seat belt reminder, Audi virtual cockpit plus, Without additional warning lights, Without "Multimedia" in vehicle, Audi phone box light, No self-collection, Audi AG, Category 1, advanced, Standard-production quality, Driving on the right, Type approval country Denmark, Part set without country-specific prescriptive standard, Operating permit- alteration, SI engine, Tires with optimized rolling resistance- speed-limited- 245/40 R18, Battery 380 A (68 Ah), Data module- Europe, Sportsback, Reversing camera, Refrigerant R1234yf, Without head-up display, Left-hand drive, Sequence cloth/leather combination, Engine cover, Transit coating (type 1), Standard battery/alternator capacity, Matrix LED headlights and LED rear lights, Sports seats in front, Without Storage package, Service indicator 30 000 km or 2 years ( variable ), With multifunction camera, Clear glass, Interior lighting, Camera-based traffic sign recognition, Digital Audio Broadcasting, Electromechanical power steering, Control of special edition prices, 4-cylinder SI engine 2.0 l unit 06N.A 888evo4, Instrument cluster- km/h speedometer, Hold assist, Tires without specification of tire brand, Without garage door opener, Stainless steel pedals and footrest, Standard electric, Extended pedestrian protection, Door sill trims with aluminum inlays- front- illuminated- S logo, Equipment package for Denmark, Equipment package for Denmark, Interior S line, Internal control code, Internal control code, Internal control code, Internal control code, Equipment options subset for Denmark, Wheels- 5-V-spoke Y- 8.5J x 18- 245/40 R18 tires, 4-cyl. SI eng. 2.0 l/150 kW (16V) turbo FSI- homogen.- base eng. TR6/T2A/T2C/TC3/T12/T66/T4X/T12/T5V/TC1/T1F/T4E/T4M, No special edition, Regional code " ECE " for radio, No special purpose vehicle- standard equipment, Control of series production, Without AdBlue tank, Basic equipment variant, Preparation for functions on demand, Production wheels, Country group A, N.N.N. Type 1, S tronic, Without preconditioning, Without antenna amplifier, Without rear differential, Vehicles with special upgrade measures, Accent surfaces- Gloss Black, Without Car2X, Audi connect navigation & infotainment, Smartphone interface, Audi connect emergency call & service with Audi connect remote & control

**PICTURES**



**Picture viewer:** <https://fm.bilsalg.dk/business/picturebrowser?t=full&guid=c04b402c-5912-49e6-b7b3-8ebfe52ec87f&carid=20529145>

## OVERVIEW OF DAMAGES AND SHORTAGES

N°	LOCATION	TYPE	SEVERITY	INSURANCE	NOTES	DAMAGE GROUP
1	L. Mirror, Casing	Scratch	C4		Reporting needed	
						
2	Hood	Stone Chips	C3			
						
3	Roof	Stone Chips	C3			
						

Severity explanation:

C0 = No damage / C1 = Simple preparation / C2 = Minor preparation needed / C3 = Can be smart repaired / C4 = Repair/spray paint / C5 = Need replacement

## ELECTRICAL AND MECHANICAL CONDITION

N°	LOCATION	TYPE	NOTES
1	Is the car drivable	Yes	