

VEHICLE DESCRIPTION - Škoda Octavia Style 1.5 TSI e-TEC MHEV



First registration date:
5/2023

VIN:
TMBAR8NX2PY123566

Colour:
null Metallic Normal gloss

Mileage (km):
58.362

Gear:
Automatic (7 Gears)

Fuel type:
Hybrid petrol

Body type:
Hatchback

Number of doors:
5

Drive type:
FWD

Model year:
2020-2024

Engine power:
110 kW

Number of seats:
5

Engine size (cc):
1498

Interior:
Dark grey Fabric

VEHICLE DETAILS

Number of keys:
2

Number of license plates:
2

Registration certificate:
Part 1 & 2 present

Service documentation:
No

Inspection date:
05-05-2026

Last service (year/month):

Mileage (km) at last service:

SUMMARY OF THE VEHICLE'S CONDITION

Is the car in a driveable condition:
Yes

Legal tire tread (minimum 1.6 mm):
Yes

WHEELS

TYPE	SEASON	BRAND	POSITION	RIM	SIZE	TREAD
Fitted	Summer tires		Rear Left	Alloy rim	17"	5 mm
Fitted	Summer tires		Front Right	Alloy rim	17"	4 mm
Fitted	Summer tires		Front Left	Alloy rim	17"	4 mm
Fitted	Summer tires		Rear Right	Alloy rim	17"	5 mm

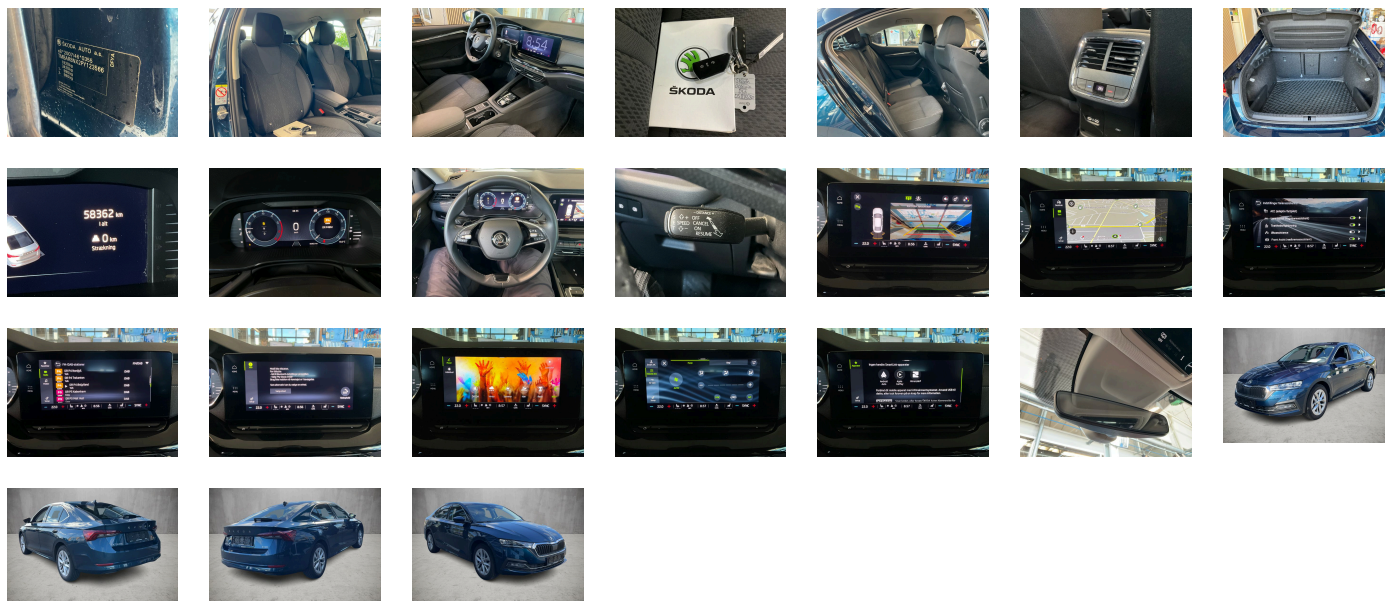
Legal tire tread (minimum 1.6 mm):

Yes

ACCESSORIES







Driving on the right, Luxury equipment, Part set without country-specific prescriptive standard, Type approval country Denmark, Operating permit- alteration, Alloy wheels "ROTARE AERO" 7J x 17" - 4 pcs, 4-cylinder SI engine 1.5 l/110 kW mild hybrid- TSI base engine is TJ7, Remote Access / Remote Access + Online Infotainment, "DRIVER ALERT" - driver alert system, Regional code " ECE " for radio, Without charging cable, No special edition, Standard paint coating, Basic equipment variant, No special purpose vehicle- standard equipment, Standard electronic engine sound, Vehicles without special upgrade measures, Without Car2X, Shock absorption in front, 7-speed automatic transmission, Tires 205/55 R17 91V Low Rolling Resistance, Without bracket, Curb weight range 1, Rear axle weight- type 1, Battery 420 A (70 Ah), "REAR VIEW", Climatronic (3-zone) with air conditioning control panel in rear, Refrigerant R1234yf, Without head-up display, Notchback, Left-hand drive, Suspension range 05 installation control only- no requirement forecast, Without adapter, Standard battery/alternator capacity, Emergency call system eCall+, Seat trim covers in fabric, 230V socket + 2x USB in front- 2x USB in rear (middle-console)- 1x USB in rear-view mirror, Without storage compartment package/box, LongLife Service Regime, Voice control, Service indicator 30 000 km or 2 years (variable), With multifunction camera, Interior ambient lighting and surround lighting, Without dynamic road sign display, DAB - Digital radio reception, Comfort seats in front (sports seats forRS), 4-cylinder SI engine 1.5 l unit 05E.A, Hill hold control, Parking brake, Mechanical rear seat release, Instrument cluster- km/h speedometer, 2x USB in front- 2x USB in rear (middle-console)-1x USB in rear-view mirror, Standard pedal cluster, Tire suppliers for EU countries, Remote Access + Infotainment Online 1 year, Front stabilizer bar, 4 doors, Without rear stabilizer bar, Wheelbase, Installation differentiation for transmission DQ200 -- vehicle components --, Standard manufacturing sequence, Hybrid drive system mHEV, Nameplate set in basic style, Standard rear axle, Rear exhaust tailpipe (standard), Floor mats in front and rear, Manual in Danish, Weight range 10 installation control only- no requirement forecast, Standard climatic zones, Brake control system for vehicles with electric drive (ESC and electromechanical brake booster), Fuel system for fuel-injected SI engine, Special identification label for EC for M1 passenger vehicles, Activated carbon canister (Evaporative Emission Control System (EVAP)), Breakdown kit, Rear shock absorption- basic version 1, Disc brakes in rear, Trailer hitch preparation, Trims for alloy wheels, Speed-related variable steering assist (Servotronic), Standard wheel bolts, Mass damper for steering wheel- XX Hz, Without additional front underbody guard, Tool kit, Without folding table on front seat backrest, Front-wheel drive, Electronic differential lock XDS- dynamic traction support, Disc brakes in front (Geomet D), Initial standard fuel filling (6L), Without delivery equipment, Additional exterior noise suppression, Vehicle class differentiation -5EN-, Leather-wrapped multi-function steering wheel with tiptronic, Without locking and starting systems, Without "drive select", Body-colored bumpers, Without additional tires, Without electric motor (hybrid), Child seat anchors f. child seat system i-Size- 2x top tether and child seat anchors in front on front passenger side, Without partition, 3-point seat belt for center rear seat, Center console, Without roof insert (standard roof), Without luggage/load compartment floor, Without backrest release for front seats, Manual height adjustment for front seats, Unsplit rear seat bench- split folding backrest- with center armrest, Storage compartments in trunk, 3-point seat belts in front- with tensioner and height adjustment, Without roof rails/roof load rack, Three rear head restraints, Luggage compartment cover- folding, Special interior noise suppression, Without ski bag, 3-point seat belts- outer rear with ECE label, Door and side trim panel, Seat heater for front seats separately controlled, Emission standard EU6 AP, Without seat ventilation/massage seat, Tailgate/trunk lid release, Heat-reflecting windshield, With emergency steering support with turn assist, Manual child safety lock, Side and rear windows in heat-insulatingglass, Keyless locking and starting system "Keyless Advanced" without SAFELock, Breakaway interior rearview mirror- auto-dimming, Dashboard- black- with PAD - Style- RS- Scout, RS grey stitching, Rear floor panel module- type 4, Power windows with comfort operation andcircuit breaker, Driver knee airbag, Chrome package, Without special body measures, UWB-capable country and carrier frequency- 433.92 to 434.42 MHz, Exterior mirrors: convex on driver side- convex on front passenger side, Without rear spoiler, Transport protection film with additional transport protection measures, Decorative insert "PIANO BLACK", Sun visors with illuminated vanity mirror on driver and front passenger side, Front head restraints, Side airbag in front with curtain airbagand interaction airbag in front, Additional stone guard body covers, Center armrest in front, Exterior mirror housings and various add-on parts in body color, Lane Assist (without HOD), Vent, Without tie down straps/net/pocket, Unsplit molded headliner, Without mud flap, Without gearshift knob/handle, Luggage compartment floor covering "Comfort", Interior light in footwell in front and rear, Exterior rear view mirrors, glass el. adjusted-auto dimming (driver)- heated- housing el. powerf.- board.spot(w. KA6), Without speed limiter, Electronic immobilizer, 12-volt socket in luggage boot, Without heat accumulator/auxiliary heater, FPK Display, Tire pressure monitoring system, Start-stop system with regenerative braking, Scuff plates in door apertures, Manually adjustable lumbar support in front seats, Navi Columbus + Web Radio, "CREW PROTECT ASSIST" (proactive passenger protection system- basic and front), Park distance control, Without lane change assist, Without mode 3 charging cable, Optional infotainment system (MIB3), Without second battery, High-beam control, LED headlamps, Windshield wiper intermittent control with light/rain sensor, "FRONT ASSIST" - with warning and braking reaction to vehicles- pedestrians and cyclists, Separate daytime running light, Rear window wiper "AERO", Headlight range control, 8 speakers (passive), Rear fog light on one side- back-up light on both sides, Adaptive cruise control (with "follow-to-stop") and speed limiter, LED rear combination lamp- variable lighting functions- special styling, Front fog lamp and cornering lamp, Without headlamp washer system, Two-tone horn, Antenna for FM reception only- diversity, Not hot country, Luggage compartment lighting, Belt-driven integrated starter alternator 48 V 110 - 250 A, Without additional malfunction display, Comfort telephony with LTE and wireless charging, Without supertone system and tone sequence control, Without auxiliary heater/parking heater, Visual and acoustic seat belt reminder- electric contact in front and rear, Additional retro-reflectors (door area), Heated winscreen washer nozzles, "SMART LINK" (wired and wireless connect), 230-V inverter and outlet for Europe, Equipment options subset for Denmark

PICTURES



Picture viewer: <https://fm.bilsalg.dk/business/picturebrowser?t=full&guid=b8ab0e06-0824-4cbd-8f7d-03838ce40abc&carid=20518955>

OVERVIEW OF DAMAGES AND SHORTAGES

N°	LOCATION	TYPE	SEVERITY	INSURANCE	NOTES	DAMAGE GROUP
1	Other	Hole	C5		Reporting needed Isolerings måtte	
						
2	Rear Hood	Scratch	C3			
						
3	Other	Loose	C3		Nøgle	
						
4	R. Rear Door	Dent	C3			
						
5	L. Rear Quarter Panel	Scratch	C3			
						
6	Rear Bumper	Scratch	C3			
						

Severity explanation:

C0 = No damage / C1 = Simple preparation / C2 = Minor preparation needed / C3 = Can be smart repaired / C4 = Repair/spray paint / C5 = Need replacement

ELECTRICAL AND MECHANICAL CONDITION

N°	LOCATION	TYPE	NOTES
1	Is the car drivable	Yes	