

VEHICLE DESCRIPTION - VW Passat Elegance 1.5 TSI



First registration date:
6/2023

VIN:
WWWZZZ3CZPE068851

Colour:
Black Metallic Normal gloss

Mileage (km):
45.403

Gear:
Automatic (7 Gears)

Fuel type:
Gasoline

Body type:
Estate Wagon

Number of doors:
5

Drive type:
FWD

Model year:
2019-2024

Engine power:
110 kW

Number of seats:
5

Engine size (cc):
1498

Interior:
Black Partial leatherette

VEHICLE DETAILS

Number of keys:
2

Number of license plates:
2

Registration certificate:
Part 2 present

Service documentation:
No

Inspection date:
28-05-2026

Last service (year/month):

Mileage (km) at last service:

SUMMARY OF THE VEHICLE'S CONDITION

Is the car in a driveable condition:
Yes

Legal tire tread (minimum 1.6 mm):
Yes

WHEELS

 TYPE	SEASON	BRAND	POSITION	RIM	SIZE	TREAD
Fitted	Summer tires		Rear Left	Alloy rim	18"	4 mm
Fitted	Summer tires		Front Right	Alloy rim	18"	3 mm
Fitted	Summer tires		Front Left	Alloy rim	18"	3 mm
Fitted	Summer tires		Rear Right	Alloy rim	18"	4 mm

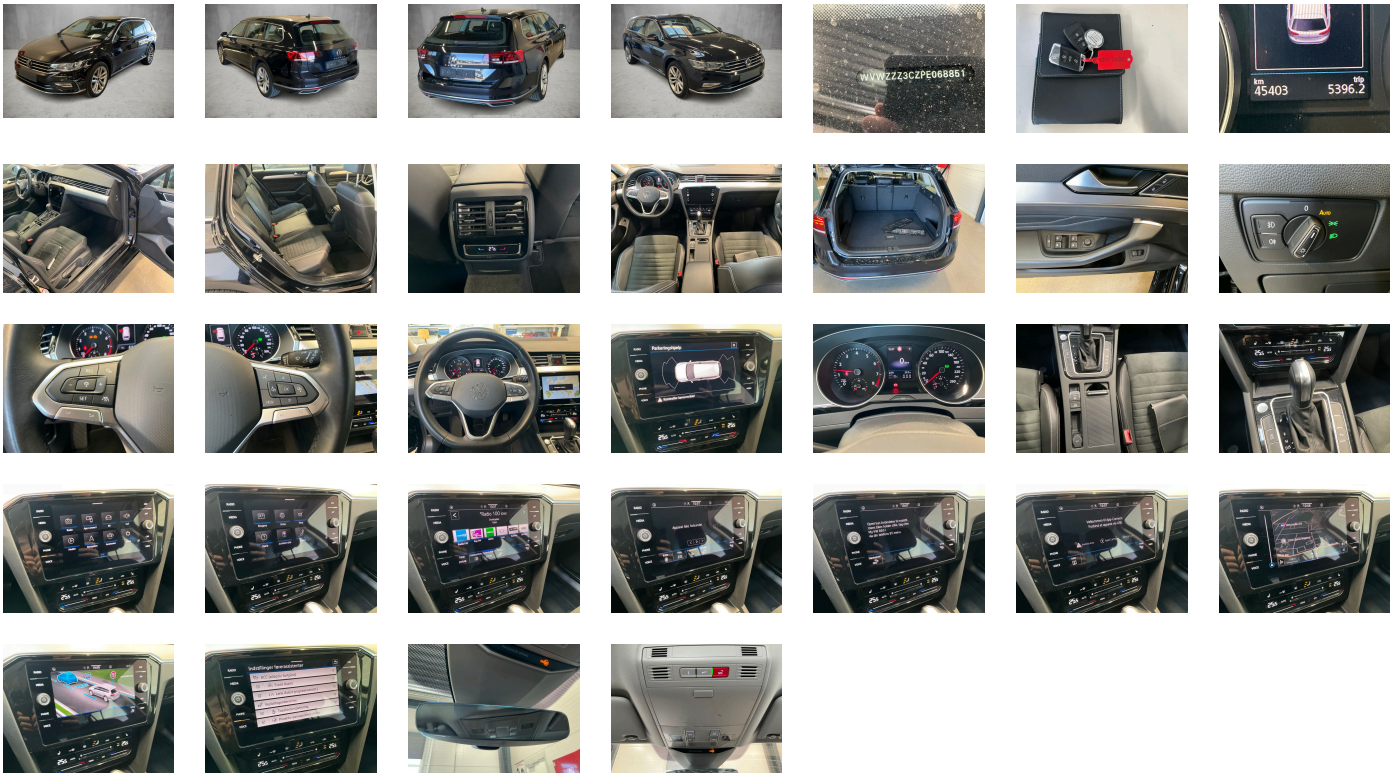
Legal tire tread (minimum 1.6 mm):

Yes

ACCESSORIES






Driving on the right, Category 0, Elegance, Part set without country-specific prescriptive standard, Type approval country Denmark, 4 alloy wheels "Dartford" 8J x 18, Operating permit- alteration, 4-cylinder SI engine 1.5 l TSI- 110 kW, Without ECO function, Online service- with OCU- with head unit coding- without engine immobilizer interconnection, Driver alert system, Regional code " ECE " for radio, Without vehicle inlet, Without charging cable, No special edition, Standard paint coating, Basic equipment variant, No special purpose vehicle- standard equipment, Electronic engine sound, Vehicles with special upgrade measures, Shock absorption in front, 7-speed automatic transmission or dual-clutch transmission DSG- note: PR family EDF, Battery 420 A (70 Ah), AirStop® tires 235/45 R18- low rolling resistance, Without camera systems/accident sensors, Air Care Climatronic 3 zone automatic climate control w/ allergen filter- enhanced air filter a. controls in rear, Refrigerant R1234yf, Without head-up display, Wagon, Left-hand drive, Suspension range 32 installation control only- no requirement forecast, Standard battery/alternator capacity, Emergency call service, no registration required- service is activated upon delivery, Inserts of front seats and outer rear seats in ArtVelours microfleece- inner sides of bolsters in leather "Vienna", "Dartford" 8J x 18- AirStop® tires 235/45 R18, Rear seat area package with air conditioning and power system, Travel Assist incl. Emergency Assist, Without child seat, LongLife Service Regime, Without voice control, Service indicator 30 000 km or 2 years (variable), Front vent- power mirror switch- rotary light and power window switches illuminated- with chrome bezels, Multifunction camera, Without add. lights (interior lighting), Dynamic Road Sign Display, Digital radio reception DAB+, Sports comfort seats in front, Small navigation system M&I (Media & Internet package), 4-cylinder SI engine 1.5 l, Hill Start Assist, Electromechanical parking brake with Auto Hold function, Without clock, Instrument cluster with electronic speedometer- odometer and trip odometer- tachometer, 2 USB-C ports in the front- 1 USB-C charging socket on the center console in rear- charging capacity up to 45 W, Without garage door opener, Standard pedal cluster, Pedestrian Monitoring, Tires without specification of tire brand, VE: NCAP package, Preparation for We Connect and We Connect Plus, Wheelbase, Dual-clutch transmission DSG DQ200, Standard manufacturing sequence, Without alternative drive system, Fuel tank with a volume of 66 l, Elimination of nameplate for engine designation on luggage compartment lid, Rear exhaust tailpipe (standard), With electronic steering column lock, Carpet mats in front and rear, Manual in Danish, Weight range 2 installation control only- no requirement forecast, Standard climatic zones, Electronic Stability Control and electromechanical brake booster, Fuel system for fuel-injected SI engine, Without trailer hitch, Special identification label for EC for M1 passenger vehicles, Activated carbon canister (Evaporative Emission Control System (EVAP)), Elimination of Tire Mobility Set, Rear shock absorption- basic version 1, Electromechanical speed-sensitive power steering, Wheel locks with extended theft protection, Mass damper for steering wheel- 36 Hz, Without additional front underbody guard, Tool kit, First aid kit and warning triangle, Front-wheel drive, Without differential lock, Disc brakes in front, Initial standard fuel filling, Without delivery equipment, Disc brakes in rear, Leather-wrapped multi-function steering wheel with shifting paddles, Without locking and starting systems, Without Adaptive Chassis Control, Body-colored bumpers with chrome trims, Plastic loading edge protection, Without additional tires, Without electric motor (hybrid), ISOFIX anchorage points for mounting of 2 child seats on rear bench seat- also for i-Size child seats, Without partition, 3-point seat belt for center rear seat, Decorative inserts "Piano Black" for center console, Without roof insert (standard roof), Folding luggage compartment floor, Non-folding front passenger seat backrest, Unsplit rear bench seat- asymmetric folding backrest- center armrest with storage comp. and load-through hatch, Front seats with height adjustment- ergoComfort seat on driver side- with electrical backrest adjustment, 3-point seat belts in front with height adjustment and seat belt pretensioners, Silver-anodized roof rails, 3 head restraints in rear, Luggage compartment cover extractable and removable, Without roll-up sunshade, 3-point seat belts with seat belt pretensioners for the outer rear seats, License plate carrier in front and rear (ECE), Door trim panel in leather look, Heated front seats, Emission standard EU6 AP, Lower side trims in chrome, Without seat ventilation/massage seat, Remote unlocking for tailgate/trunk lid, Laminated safety glass windshield- heat- and sound-insulating, Child safety lock, Keyless Start without SAFELOCK, Green heat-insulating glass windows on sides and in rear, Auto-dimming interior rearview mirror, 2 beverage holders in front with cover, Driver and front passenger airbag with front passenger airbag deactivation- including knee airbag on driver side, Without front passenger seat control, Curtain airbag system for front and rear passengers incl. side airbags in front, Chrome trims on the side windows, Without special body measures, Carrier frequency 433.92 MHz-434.42 Mhz, Without rear spoiler, Transport protection film (minimum protection) with additional transport protection measures, Decorative inserts in brushed aluminum for dashboard and door trim panels, Right exterior mirror- convex, Aspherical exterior mirror on driver side, Illuminated vanity mirror in sun visors- extractable sun visors, Safety-optimized front head restraints- longitudinally and height adjustable, Without fire extinguisher, Front center armrest- height- and longitudinally adjustable- w/ storage comp.- 2 vents w/ chrome louvers in rear, Travel Assist- Lane Assist and Emergency Assist, Autonomous Emergency Braking Front Assist (for Adaptive Cruise Control ACC up to 210 km/h), Without tie down straps/net/pocket, Mistral Gray headliner, Gearshift knob in leather, Textile luggage compartment lining, LED light unit in front footwell, Exterior mirrors- power-adjustable and heated- surround lighting- auto-dimming on driver side, Electronic immobilizer, 12-V outlet in center console in rear and in luggage compartment, Without heat accumulator/auxiliary heater, Without preparation for VTS (vehicle tracking system), Tire Pressure Monitoring System, Start-stop system with regenerative braking, Front and rear scuff plates in stainless steel, Lumbar supports in front- power-adjustable on driver side, Without CD/DVD for navigation, Navigation system "Discover Media" incl. Streaming & Internet, Standard engine starter, Proactive passenger protection system in combination with Front Assist, Park Distance Control - warning signals for obstacles in the front and rear, Without lane change assist, Vehicle class differentiation -3G0-, Radio, Without second battery, Alternator 140 A, Without light control, LED headlamps with LED separate daytime running light, Aut. headlight control with separate daytime running light- entry lighting and manual exit lighting, Rain sensor, Headlight range control, 8 speakers, Interior lights with switch-off delay and dimmer- 2 LED reading lights in front and 2 in rear, Rear fog light on one side- back-up light on both sides, Adaptive Cruise Control ACC stop & go incl. speed limiter, LED rear combination lamps, LED front fog lamps and cornering light, Without headlamp washer system, Two-tone horn, Diversity antenna for FM reception, Not hot country, Without integrated toll system, Without preparation for two-way radio installation, Without preparation for rotating beacon/siren combination, Non-smoker's package: Storage compartment and 12-V outlet in front, Without auxiliary heater/parking heater, Warning signal and warning lamp for front and rear seat belts not fastened, Multi-function display "Premium" with multi-color display, LED entry/warning lights in front doors, Automatically-heated washer nozzles in front, App-Connect incl. App-Connect Wireless for Apple CarPlay and Android Auto, Mobile phone interface, Operating voltage 12 V, Equipment options subset for Denmark

PICTURES



Picture viewer: <https://fm.bilsalg.dk/business/picturebrowser?t=full&guid=b40e96a0-7e4c-46a6-86f1-4617f3608163&carid=20512127>

OVERVIEW OF DAMAGES AND SHORTAGES

N°	LOCATION	TYPE	SEVERITY	INSURANCE	NOTES	DAMAGE GROUP
1	R. Front Rim	Scratch	C5		Reporting needed	
						
2	Front Bumper	Scratch	C4		Reporting needed	
						

Severity explanation:

C0 = No damage / C1 = Simple preparation / C2 = Minor preparation needed / C3 = Can be smart repaired / C4 = Repair/spray paint / C5 = Need replacement

ELECTRICAL AND MECHANICAL CONDITION

N°	LOCATION	TYPE	NOTES
1	Is the car drivable	Yes	