

VEHICLE DESCRIPTION - Seat Ibiza FR 1.0 TSI



First registration date:
5/2023

VIN:
VSSZZZKJ4PR089213

Colour:
Charcoal gray Metallic Normal gloss

Mileage (km):
32.677

Gear:
Automatic (7 Gears)

Fuel type:
Gasoline

Body type:
Hatchback

Number of doors:
5

Drive type:
FWD

Model year:
2021-2025

Engine power:
81 kW

Number of seats:
5

Engine size (cc):
999

Interior:
Black Partial leatherette

VEHICLE DETAILS

Number of keys:
2

Number of license plates:
2

Registration certificate:
Part 1 present

Service documentation:
Yes

Inspection date:
30-05-2026

Last service (year/month):
2026/2

Mileage (km) at last service:
30.240

SUMMARY OF THE VEHICLE'S CONDITION

Is the car in a driveable condition:
Yes

Legal tire tread (minimum 1.6 mm):
Yes

WHEELS

 TYPE	SEASON	BRAND	POSITION	RIM	SIZE	TREAD
Fitted	Summer tires		Rear Left	Alloy rim	18"	5 mm
Fitted	Summer tires		Front Right	Alloy rim	18"	4 mm
Fitted	Summer tires		Front Left	Alloy rim	18"	4 mm
Fitted	Summer tires		Rear Right	Alloy rim	18"	5 mm

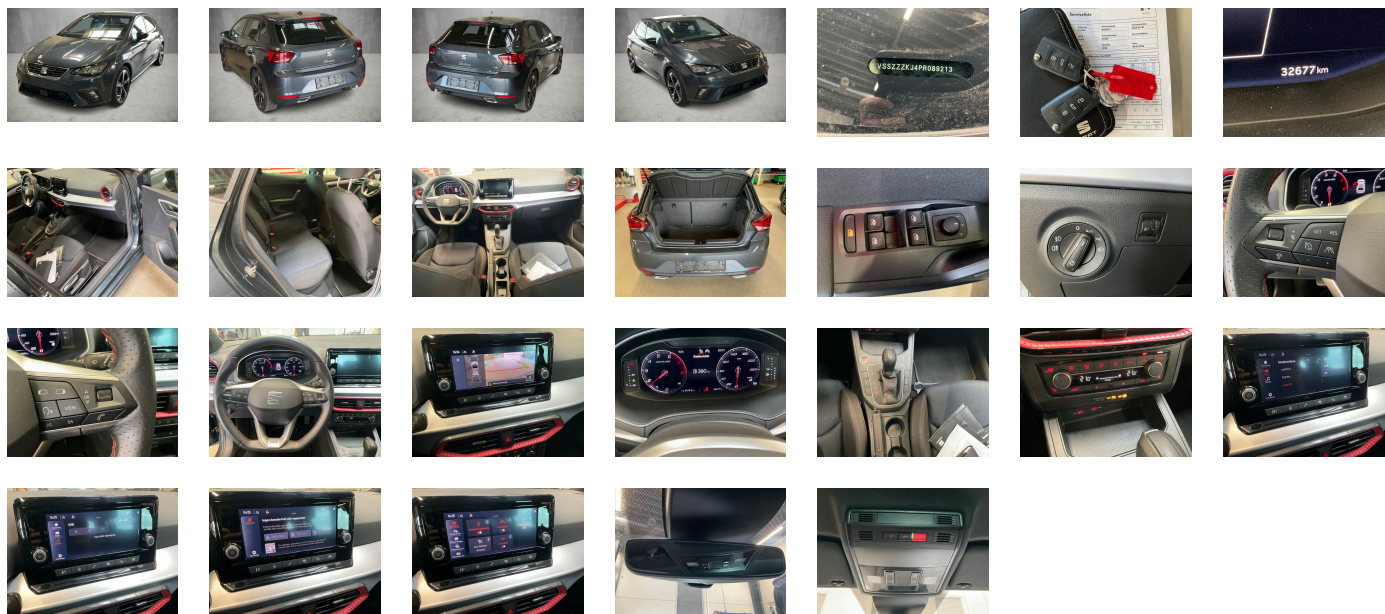
Legal tire tread (minimum 1.6 mm):

Yes

ACCESSORIES





Rear overhang- short, Without special specifications, 4 doors, Front stabilizer bar, Wheelbase, Installation differentiation for transmission DQ200 -- vehicle components --, Standard manufacturing sequence, Without alternative drive system, Heavy-duty rear axle (design 2), Nameplate set, Rear exhaust tailpipe (standard), Without floor mats, Without special color trim, Without information kit, Standard climatic zones, Weight range 8 installation control only- no requirement forecast, Fuel system for fuel-injected SI engine (tropicalized), Electronic stability control (ESC), Antifreeze up to -25 degree Celsius tolerance up to -30 degree C, Without trailer hitch, Activated carbon canister (Evaporative Emission Control System (EVAP)), Special identification label for EC for M1 passenger vehicles, Breakdown kit, Rear shock absorption- sports version, Disc brakes in rear (Geomet D), Standard air cleaner, Power steering, Trims for alloy wheels, Standard wheel bolts, Tool kit, Without additional front underbody guard, Without first aid kit and warning triangle, Vehicle class differentiation -6F0-, Front-wheel drive, Electronic differential lock XDS-dynamic traction support, Initial standard fuel filling, Disc brakes in front (Geomet D), Without delivery equipment, Axial and vertical adjustable steering column, Leather-wrapped multi-function sports steering wheel with tiptronic, Driving profile selection and conventional shock absorber, Sports bumpers, Labels in Danish-Finish and Swedish, Standard design, Fresh air intake system with combination filter, Without additional tires, Type sign and company logo, Child seat anchors for child seat system ISOFIX, 3-point seat belt for center rear seat, Without roof insert (standard roof), Without luggage/load compartment floor, Without backrest release for front seats, Manual height adjustment for front seats, Door and side trim panel, Without mounting fixture in luggage compartment, Unsplit rear seat bench- split folding backrest, Three rear head restraints, 3-point seat belts in front- with belt clamping device- without height adjustment, Without roof rails/roof load rack, Luggage compartment cover- folding, Without additional noise suppression measures for passenger compartment, 3-point seat belts- outer rear with ECE label, Seat heater for front seats separately controlled, Protective side molding, Emission standard EU6 AP, Heat-reflecting windshield, Central locking system Keyless Entry without SAFELOCK, Side windows in heat-insulating glass- from B-pillar and rear window dark tinted, Breakaway interior rearview mirror- auto-dimming, Standard dashboard, Rear floor panel module- type 1, Power windows with comfort operation and circuit breaker, Without luggage nets/pockets on backrests, Airbag on driver and front passenger side- without knee airbag- with front passenger airbag deactivation, Side airbag in front with curtain airbag, Standard decorative trims, Luggage compartment trim (design 1), Without special body measures, Carrier frequency 433.92 MHz-434.42 Mhz, Without rear spoiler, Without surface protection- with additional transport protection measures, Decorative inserts, Right exterior mirror- convex, Left exterior mirror- convex, Sun visors with mirror- airbag label on front passenger sun visor, Front head restraints, Without fire extinguisher, Without center armrest in front, Without additional side body covers (stone guard), Emblems, Exterior mirror housings and various add-on parts in body color, Lane keeping system plus traffic jam assist, Forward collision warning incl. autonomous emergency braking- for adaptive cruise control "high", Vent, Unsplit molded headliner, Hand brake lever handle in leather, Gearshift knob/handle in leather, Interior light in footwell, Exterior mirrors- power-folding/adjustment- heated, Without CD changer/CD player, Electronic immobilizer, Without heat accumulator/auxiliary heater, Tire pressure monitoring system, Start-stop system with regenerative braking, Without lumbar support in seat backrests, Without navigation device, Without CD/DVD for navigation, Without extended safety system, Park distance control in front and rear, Without lane change assist, Without second battery, High-beam control, Alternator 140 A, LED headlamps, Separate daytime running light with automatic headlight control and manual Coming and Leaving Home feature, Rear window wiper and washer system with intermittent control, Windshield wiper intermittent control with light/rain sensor, Headlight range control, 6 speakers (passive), 2 reading lights in front, LED rear combination lamp, Adaptive cruise control (with "follow-to-stop") and speed limiter, Rear fog lamp, Without washer fluid level indicator, Front fog lamps, Without headlamp washer system, Single-tone horn, Not hot country, Antenna for AM/FM reception, Climatronic with impact pressure control- CFC-free, Non-smoker's package, Without auxiliary heater/parking heater, Visual and acoustic seat belt reminder- electric contact in front and rear, Multi-function display/trip computer active info display "Entry", Without heated washer nozzles, MirrorLink, Mobile phone interface, In-plant control of self-collection, Top sports equipment, Driving on the right, "Standard Plus" version, Type approval country Denmark, Part set without country-specific prescriptive standard, Operating permit- alteration, 3-cylinder gasoline engine 1.0 l/81 kW TSI base engine: Tj4/TC5- "TSI"- "eTSI", No special edition, ECO function, Online service- with OCU- without head unit coding- without engine immobilizer interconnection, Driver alert system, Regional code " ECE " for radio, No special purpose vehicle- standard equipment, Control of series production, Standard paint coating, Without customized installation, Variant, Shock absorption in front, 7-speed automatic transmission "A7", Vehicles with special upgrade measures, Without applications, Tires 215/40 R18 89W xl, Entry-level infotainment system Radio 2 (MIB3) 8.25-inch, Battery 320 A (49 Ah), Hatchback, With rear view camera system (type 1), Refrigerant R1234yf, Standard license plate lighting, Left-hand drive, Suspension range 12 installation control only- no requirement forecast, Seat trim covers in fabric, Pan-European emergency call service, Reduced price package, Vision Plus package: rear view camera system- park distance control in front and rear using ultrasonic sensors, Safe & Driving package XL (in combination with "Media System"), Digital Cockpit, FULL LINK-USB and WLAN only, Keyless locking and starting system Keyless Access without SAFELOCK, 18-inch alloy wheels "Performance" 20/4- machined- Cosmo Gray, Standard seats in front, LongLife Service Regime, Without voice control, Service indicator 30 000 km or 2 years (variable), Chrome package, With multifunction camera, Without drawers under front seats, Interior ambient lighting- type 1, Without dynamic road sign display, Digital radio reception, Control (in-plant), Special price, 3-cylinder SI engine 1.0 l unit 05C.A, Alloy wheels 7j x 18, Instrument cluster- km/h speedometer, External- USB type C- only data socket(s), Hill start assist, Tires without specification of tire brand, Standard pedal cluster, Extended and proactive pedestrian and cyclist protection, N/A

PICTURES



Picture viewer: <https://fm.bilsalg.dk/business/picturebrowser?t=full&guid=93ede81d-21a7-47bc-9568-6729cd2c7d34&carid=20487787>

OVERVIEW OF DAMAGES AND SHORTAGES

N°	LOCATION	TYPE	SEVERITY	INSURANCE	NOTES	DAMAGE GROUP
1	Front Windscreen	Stone Chips	C5		Reporting needed	
						
2	L. Front Rim	Scratch	C4		Reporting needed	
						

Severity explanation:

C0 = No damage / C1 = Simple preparation / C2 = Minor preparation needed / C3 = Can be smart repaired / C4 = Repair/spray paint / C5 = Need replacement

ELECTRICAL AND MECHANICAL CONDITION

N°	LOCATION	TYPE	NOTES
1	Is the car drivable	Yes	