

**VEHICLE DESCRIPTION - Škoda Kodiaq Style 1.5 TSI ACT**



**First registration date:**  
6/2023

**VIN:**  
TMBJB7NS4P8524538

**Colour:**  
Blue Normal gloss

**Mileage (km):**  
89.449

**Gear:**  
Automatic (7 Gears)

**Fuel type:**  
Gasoline

**Body type:**  
SUV

**Number of doors:**  
5

**Drive type:**  
FWD

**Model year:**  
2021-2024

**Engine power:**  
110 kW

**Number of seats:**  
5

**Engine size (cc):**  
1498

**Interior:**  
Black Partial leatherette

**VEHICLE DETAILS**

**Number of keys:**  
2

**Number of license plates:**  
2

**Registration certificate:**  
Part 1 & 2 present

**Service documentation:**  
No

**Inspection date:**  
11-06-2026

**Last service (year/month):**

**Mileage (km) at last service:**

**SUMMARY OF THE VEHICLE'S CONDITION**

**Is the car in a driveable condition:**  
Yes

**Legal tire tread (minimum 1.6 mm):**  
Yes

## WHEELS

TYPE	SEASON	BRAND	POSITION	RIM	SIZE	TREAD
Fitted	Summer tires		Front Left	Alloy rim	19"	4 mm
Fitted	Summer tires		Rear Right	Alloy rim	19"	4 mm
Fitted	Summer tires		Rear Left	Alloy rim	19"	4 mm
Fitted	Summer tires		Front Right	Alloy rim	19"	4 mm

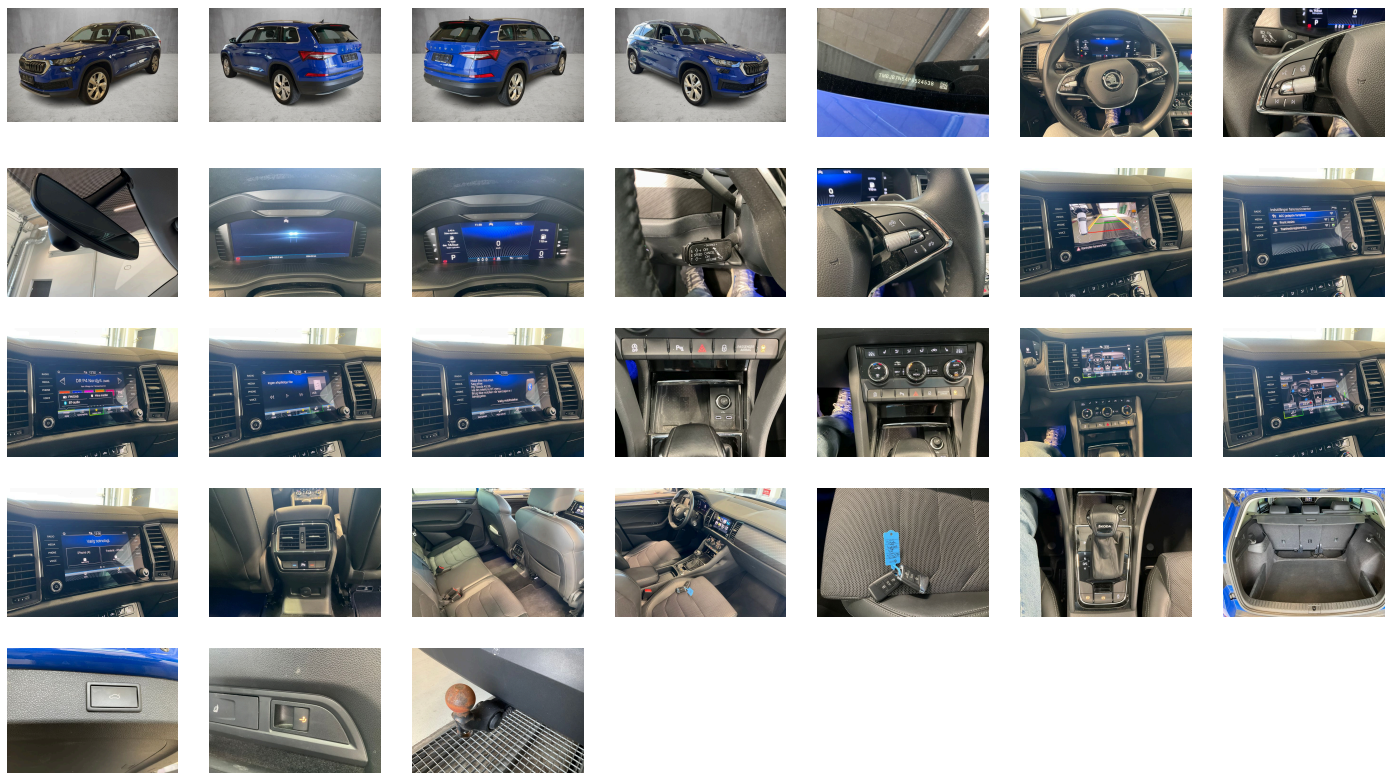
### Legal tire tread (minimum 1.6 mm):

Yes

## ACCESSORIES





Front stabilizer bar, Wheelbase, Rear stabilizer bar, Standard manufacturing sequence, Installation differentiation for transmission DQ381 -- vehicle components --, Without alternative drive system, Without decals and emblems, Vehicle class differentiation -55A-, Nameplate set in basic style, With electronic steering column lock, Floor mats in front and rear, Manual in Danish, Standard climatic zones, Weight range 6 installation control only- no requirement forecast, Fuel system for fuel-injected SI engine, Electronic stability control (ESC), Activated carbon canister (Evaporative Emission Control System (EVAP)), Special identification label for EC for M1 passenger vehicles, Breakdown kit, Rear shock absorption- basic version 1, Speed-related variable steering assist (Servotronic), Trims for alloy wheels, Standard wheel bolts, Tool kit, Without additional front underbody guard, Without folding table on front seat backrest, Front-wheel drive, Initial standard fuel filling, Disc brakes in front, Without delivery equipment, Additional exterior noise suppression, Disc brakes in rear, Without locking and starting systems, Leather-wrapped multi-function steering wheel- heated- with tiptronic, Without "drive select", Standard bumpers, Fuel filler cap, Without additional tires, Child seat anchors for child seat system ISOFIX, 3-point seat belt for center rear seat, Without partition, Without roof insert (standard roof), Without child seat anchor in front (ISOFIX), Without luggage/load compartment floor, Without backrest release for front seats, Manual height adjustment for front seats, Storage compartments with cover in trunk side panel, 3-point seat belts in front- with tensioner and height adjustment, Bright roof rails, Three rear head restraints, Luggage compartment cover- sliding, Without additional noise suppression measures for passenger compartment, Without load-through hatch, Without roll-up sunshade, Without trash bin, 3-point seat belts- outer rear with ECE label, Seat heater for front seats separately controlled, Door and side trim panel in leather, Without protective side molding, Emission standard EU6 AP, Without seat ventilation/massage seat, Tailgate/trunk lid power closing, Heat-reflecting windshield, Manual child safety lock, Central locking system Keyless Entry without SAFELOCK, "SUNSET", Breakaway interior rearview mirror- auto-dimming, Luggage pockets on backrest, Driver knee airbag, Side airbag in front with curtain airbag, Bright decorative trims, Without special body measures, Carrier frequency 433.92 MHz-434.42 Mhz, Roof spoiler, Transport protection film with additional transport protection measures, Rear seat bench/backrest- split folding, Decorative inserts, Right exterior mirror- convex, Left exterior mirror- convex, Sun visors with mirror-illuminated, Front head restraints, Without fire extinguisher, Center armrest in front, Exterior mirror housings and various add-on parts in body color, Without lane keeping system, Forward collision warning incl. autonomous emergency braking- for adaptive cruise control "high", Without tie down straps/net/pocket, Without mud flap, Unsplit molded headliner, Gearshift knob/handle in leather, Luggage compartment floor covering in needle-punched nonwoven, Interior light in footwell in front and rear, Exterior mirrors- auto-dimming- power-folding/adjustable/heated, Electronic immobilizer, 12-volt socket(s), Without heat accumulator/auxiliary heater, Tire pressure monitoring system, Start-stop system with regenerative braking, Scuff plates in door apertures, Overhead storage compartment, Manually adjustable lumbar support in front seats, Radio Bolero, Without extended safety system, Park distance control in front and rear, Without lane change assist, Optional infotainment system (MIB3), Without second battery, High-beam control, Alternator 140 A, LED headlamps, Separate daytime running light with automatic headlight control and manual Coming and Leaving Home feature, Windshield wiper intermittent control with light/rain sensor, Headlight range control, Key for locking system with remote control, 8 speakers (passive), 2 reading lights in front, Adaptive cruise control (with "follow-to-stop") and speed limiter, Rear fog lamp, LED rear combination lamp- variable lighting functions- special styling, Washer fluid level indicator, Front fog lamps, Headlamp washer system, Two-tone horn, Not hot country, Antenna for FM reception only- diversity, Luggage compartment lamp, Without additional malfunction display, Comfort telephony with LTE and wireless charging, Non-smoker's package, Without auxiliary heater/parking heater, Visual and acoustic seat belt reminder- electric contact, Virtual Cockpit, Heated washer nozzles in front, Additional retro-reflectors (door area), "SMART LINK" (wireless for Apple), Operating voltage 12 V, Sports equipment, Driving on the right, Type approval country Denmark, Part set without country-specific prescriptive standard, Operating permit- alteration, 4-cylinder SI engine 1.5 l/110 kW TSI base engine is TJ7/N09/T9F/T57/T0D, No special edition, Without ECO function, Remote Access / Remote Access + Online Infotainment, Driver alert system, Regional code " ECE " for radio, No special purpose vehicle- standard equipment, Standard paint coating, Control of series production (deviating in-plant control), Variant, Shock absorption in front, 7-speed automatic transmission, Without electronic engine sound measures, Tires 235/50 R19 99V, Without bracket, Curb weight range 1, Rear axle weight-type 1, Battery 420 A (70 Ah), Hatchback, With rear view camera system (type 2), Climatronic (3-zone) with air conditioning control panel in rear, Refrigerant R1234yf, Without head-up display, Suspension range 03 installation control only- no requirement forecast, Left-hand drive, Seat trim covers in fabric + leather, Without adapter, Standard battery/alternator capacity, Emergency call system eCall+, Comfort seats in front, LongLife Service Regime, Voice control, Service indicator 30 000 km or 2 years ( variable ), Chrome package, Without multifunction camera, Drawers under front seats, Interior ambient lighting- type 1, Without dynamic road sign display, DAB - Digital radio reception, 4-cylinder SI engine 1.5 l unit 05E.A, Alloy wheels 7J x 19 "TRIGLAV", Instrument cluster- km/h speedometer, USB front, Hill start assist, Parking brake, Mechanical rear seat release, Tires without specification of tire brand, Standard pedal cluster, Extended and proactive pedestrian protection, Remote Access 1 year, Trailer hitch mechanically swiveling and power-detachable, Equipment options subset for Denmark

**PICTURES**



**Picture viewer:** <https://fm.bilsalg.dk/business/picturebrowser?t=full&guid=91bbc54e-5fab-45e1-b5f3-830943726e58&carid=20487770>

**OVERVIEW OF DAMAGES AND SHORTAGES**

N°	LOCATION	TYPE	SEVERITY	INSURANCE	NOTES	DAMAGE GROUP
1	Front Windscreen	Stone Chips	C5		Reporting needed	
						
2	L. Rear Door	Scratch	C4		Reporting needed	
						

Severity explanation:

C0 = No damage / C1 = Simple preparation / C2 = Minor preparation needed / C3 = Can be smart repaired / C4 = Repair/spray paint / C5 = Need replacement

**ELECTRICAL AND MECHANICAL CONDITION**

N°	LOCATION	TYPE	NOTES
1	Is the car drivable	Yes	