

VEHICLE DESCRIPTION - VW Touran Highline 1.5 TSI



First registration date:
5/2023

VIN:
WVGZZ1T7PW022896

Colour:
Black Metallic Normal gloss

Mileage (km):
75.016

Gear:
Automatic (7 Gears)

Fuel type:
Gasoline

Body type:
MPV

Number of doors:
5

Drive type:
FWD

Model year:
2015

Engine power:
110 kW

Number of seats:
7

Engine size (cc):
1498

Interior:

VEHICLE DETAILS

Number of keys:
2

Number of license plates:
2

Registration certificate:
Part 1 & 2 present

Service documentation:
Yes

Inspection date:
02-06-2026

Last service (year/month):
2025/10


Mileage (km) at last service:
60.937

SUMMARY OF THE VEHICLE'S CONDITION

Is the car in a driveable condition:
Yes

Legal tire tread (minimum 1.6 mm):
Yes

WHEELS

 TYPE	SEASON	BRAND	POSITION	RIM	SIZE	TREAD
Fitted	Summer tires		Front Left	Alloy rim	16"	5 mm
Fitted	Summer tires		Rear Right	Alloy rim	16"	5 mm
Fitted	Summer tires		Rear Left	Alloy rim	16"	5 mm
Fitted	Summer tires		Front Right	Alloy rim	16"	5 mm

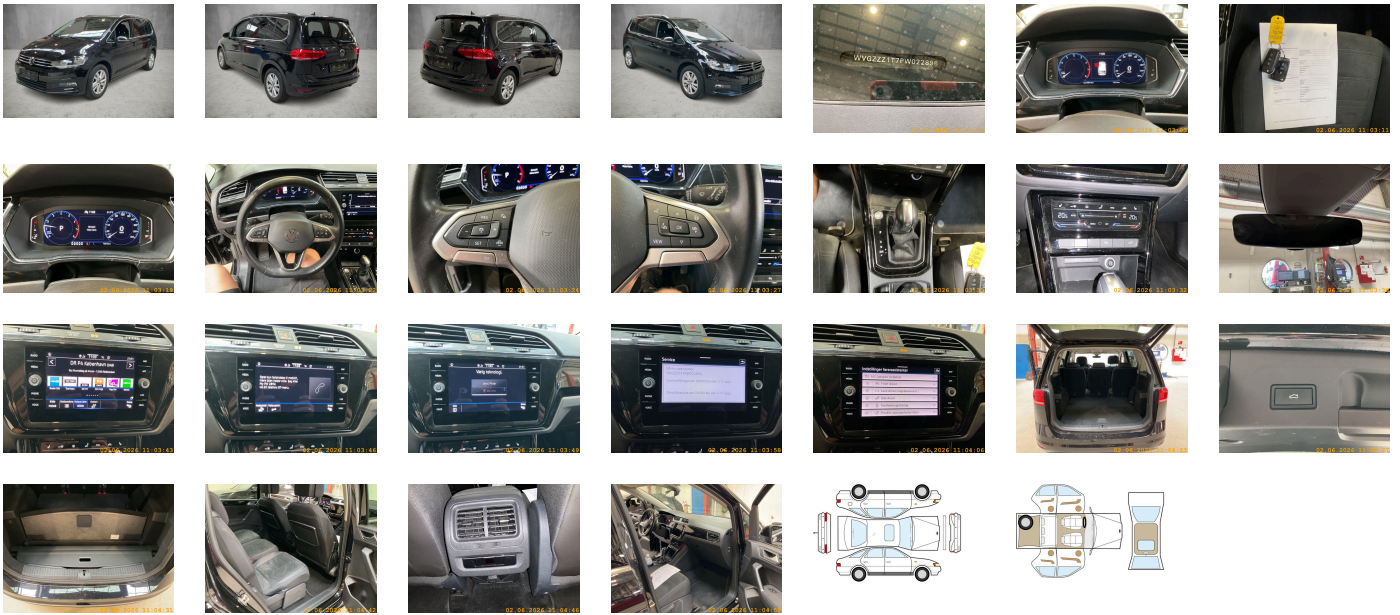
Legal tire tread (minimum 1.6 mm):

Yes

ACCESSORIES

Front stabilizer bar, Wheelbase, Rear stabilizer bar, Dual-clutch transmission DSG DQ200, Without alternative drive system, Without decals and emblems, Fuel tank, Elimination of nameplate for engine designation on luggage compartment lid, Rear exhaust tailpipe (standard), Without electronic steering column lock, Carpet mats in front and rear, Manual in Danish, Standard climatic zones, Weight range 8 installation control only- no requirement forecast, Fuel system for fuel-injected SI engine, Electronic Stability Control w/ driver steering recommendation- ABS- ASR- EDL- EDTC and trailer stabilization, Without trailer hitch, Activated carbon canister (Evaporative Emission Control System (EVAP)), Special identification label for EC for M1 passenger vehicles, Tire Mobility Set: 12-volt compressor and tire sealant, Rear shock absorption- basic version 1, Electromechanical speed-sensitive power steering, Trims for alloy wheels, Standard wheel bolts, Tool kit, Without additional front underbody guard, Warning triangle, Folding tables on the back of each front seat- articulated, Glove compartment with cooling system, Front-wheel drive, Initial standard fuel filling, Disc brakes in front, Without delivery equipment, Disc brakes in rear, Leather multi-function steering wheel- heated, Without Adaptive Chassis Control, Body-colored bumpers- front with lower decorative trim in chrome, Allergen filter, Without additional tires, License plate carrier in front and rear (ECE), ISOFIX anchorage points (mounting fixture for child seats on rear seats), Without partition, Decorative inserts "Piano Black" for center console, Without roof insert (standard roof), Luggage compartment floor, Front passenger seat backrest completely folding- with table and fold-flat feature, Front seats with height adjustment- ergoActive seat on driver side, 3-point seat belts in front with height adjustment and seat belt pretensioners, Silver-anodized roof rails, Luggage compartment cover with convenient open feature- extractable- removable and stowable, Without roll-up sunshade, 3-point seat belts with seat belt pretensioners in rear, Heated front seats, Door and side trim panel in foam film and woven fabric, Emission standard EU6 AP, Laminated safety glass windshield- sound-insulating and heated, Child safety lock, Keyless locking and starting system Keyless Access without SAFELOCK, Privacy glass for rear side windows and rear window, Auto-dimming interior rearview mirror, Storage compartment with cover on dashboard, Driver and front passenger airbag with front passenger airbag deactivation- including knee airbag on driver side, Curtain airbag system for front and rear passengers incl. side airbags in front, Chrome trims on the side windows, Carrier frequency 433.92 MHz- 434.42 Mhz, Easy Open & Close - sensor controlled luggage compartment opening and closing with remote unlocking, Transport protection film (minimum protection) with additional transport protection measures, 3 single seats in 2nd row of seats with armrest- 2 single seats in 3rd row of seats with Easy Fold, Decorative inserts "Piano Black" for dashboard and front door trim panels, Right exterior mirror- convex, Aspherical exterior mirror on driver side, Illuminated vanity mirrors in sun visors, Safety-optimized front head restraints- longitudinally and height adjustable, Without fire extinguisher, Front center armrest- height- and longitudinally adjustable- w/ removable storage compartment- 2 vents in rear, Without additional side body covers (stone guard), Body-colored exterior mirror housings and door handles, Lane keeping system Lane Assist, Autonomous Emergency Braking Front Assist (for Adaptive Cruise Control ACC up to 210 km/h), Black radiator grille with chrome trims on the fins, Without C-rails, Storm Gray headliner, Gearshift knob in leather, Gearshift boot for automatic transmission, Standard luggage compartment floor covering, LED light unit in front footwell, Ext. mirrors- power-folding- auto-dimm. on driver side- surround lighting and front pass. ext. mirror lowering funct., Electronic immobilizer, 12 V outlet in center console in rear and in luggage compartment, Without heat accumulator/auxiliary heater, Tire Pressure Monitoring System, Vehicle class differentiation -5T0-, Start-stop system with regenerative braking, Without protective film for scuff plate, Overhead storage compartments, Preparation for subsequent activation: Navigation feature "Discover Media" incl. Streaming & Internet, Proactive passenger protection system in combination with Front Assist and Side Assist, Park Distance Control - warning signals for obstacles in the front and rear, Lane change system Side Assist and Rear Traffic Alert, Radio, High-beam control Light Assist, Alternator 140 A, Lumbar supports in front- power- adjustable on driver side- massage feature on driver side, Halogen headlamps and turn signal lamps under one clear lens, Aut. headlight control with separate daytime running light- entry lighting and manual exit lighting, Rain sensor, Headlight range control, 8 speakers, Interior lights with switch-off delay and dimmer- 2 LED reading lights in front and rear, Rear combination lamp- standard design, Adaptive Cruise Control ACC stop & go incl. speed limiter, Rear fog lamp, Without additional instruments for distance measurement, Warning lamp for washer fluid level, Front fog lamps and cornering light, Headlamp washer system, Not hot country, Diversity antenna for FM reception, Without preparation for two-way radio installation, Without luggage compartment lighting, Without preparation for rotating beacon/siren combination, Non-smoker's package: Storage compartment and 12 V outlet in front, Without identification lights, Without auxiliary heater/parking heater, Warning tone and warning lamp for front seat belts not fastened- warning lamp for rear seat belts not fastened, Multi-color Digital Cockpit Pro- selection of different info profiles possible, Automatically-heated washer nozzles in front, App-Connect incl. App-Connect Wireless for Apple CarPlay and Android Auto, Operating voltage 12 V, Mobile phone interface, Sports equipment, Driving on the right, Type approval country Denmark, Part set without country-specific prescriptive standard, 4 alloy wheels "Karlstad" 6.5J x 16, Operating permit-alteration, 4-cylinder SI engine 1.5 l TSI- 110 kW, No special edition, Without ECO function, Online service- with OCU- with head unit coding- without engine immobilizer interconnection, Driver alert system, Regional code " ECE " for radio, No special purpose vehicle- standard equipment, Standard paint coating, Shock absorption in front, 7-speed automatic transmission or dual-clutch transmission DSG- note: PR family EDF, Vehicles without special upgrade measures, Tires 205/60 R16 low rolling resistance, Battery 380 A (59 Ah) EFB+, MPV, Without camera systems/accident sensors, Air Care Climatronic 3 zone automatic climate control w/ allergen filter- enhanced air filter a. controls in rear, Refrigerant R1234yf, LED license plate lighting, Without head-up display, Suspension range 07 installation control only- no requirement forecast, Left-hand drive, 4-cylinder SI engine 1.5 l unit 05E.D, Inserts in ArtVelours microfleece, Standard battery/alternator capacity, eCall Emergency System, ergoActive driver seat with 14-way adjustment and massage feature, Easy Open & Close package without SAFELOCK, Adaptive Cruise Control ACC stop & go up to 210 km/h and Automatic Emergency Braking Front Assist, 2 single seats in 3rd row of seats retractable into cargo area, Heated windshield, Lane keeping system Lane Assist, Premium comfort seats in front, Without child seat, LongLife Service Regime, Without voice control, Service indicator 30 000 km or 2 years (variable), Chrome elements on power mirror switch- rotary light/power window switch- front vents and interior door handles, Multifunction camera, Drawer under right front seat, Ambient lighting (light strips on door trim inserts in front, front door handles and door armrests illuminated), Without dynamic road sign display, Digital radio reception DAB+, Radio "Ready 2 Discover" incl. "Streaming & Internet", Instrument cluster with electronic speedometer- odometer and trip odometer- tachometer, 2 USB-C ports in the front- charging capacity up to 45 W, Electromechanical parking brake with Auto Hold function, Tires without specification of tire brand, Standard pedal cluster, Pedestrian and cyclist monitoring as well as re-active hood, Denmark: Comfort package II forces TL: PF1/2-P14-PM5 CL: PF1/2-P14- PM5-PB4 HL: P14-PM5-PB4-2H5-7X2, Winter package, Preparation for We Connect and We Connect Plus, Equipment options subset for Denmark

PICTURES



Picture viewer: <https://fm.bilsalg.dk/business/picturebrowser?t=full&guid=65924888-1f0e-48ab-a4d5-f47ef56a56b0&carid=20477013>

OVERVIEW OF DAMAGES AND SHORTAGES

No damages or shortages

ELECTRICAL AND MECHANICAL CONDITION

N° LOCATION	TYPE	NOTES
1 Is the car drivable	Yes	