

VEHICLE DESCRIPTION - VW T-Cross Style Plus 1.0 TSI



First registration date: 5/2023	VIN: WVGZZC1ZPY056150
Colour: Black Metallic Normal gloss	Mileage (km): 23.999
Gear: Automatic (7 Gears)	Fuel type: Gasoline
Body type: SUV	Number of doors: 5
Drive type: FWD	Model year: 2018-2024
Engine power: 81 kW	Number of seats: 5
Engine size (cc): 999	Interior: Dark grey Partial leatherette

VEHICLE DETAILS

Number of keys: 2	Number of license plates: 2	Registration certificate: Part 1 present	Service documentation: Yes
Inspection date: 10-06-2026	Last service (year/month): 2026/1	Mileage (km) at last service: 21.011	

SUMMARY OF THE VEHICLE'S CONDITION

Is the car in a driveable condition: Yes	Legal tire tread (minimum 1.6 mm): Yes
--	--

WHEELS

 TYPE	SEASON	BRAND	POSITION	RIM	SIZE	TREAD
Fitted	Summer tires		Rear Left	Alloy rim	17"	5 mm
Fitted	Summer tires		Front Right	Alloy rim	17"	6 mm
Fitted	Summer tires		Front Left	Alloy rim	17"	6 mm
Fitted	Summer tires		Rear Right	Alloy rim	17"	5 mm

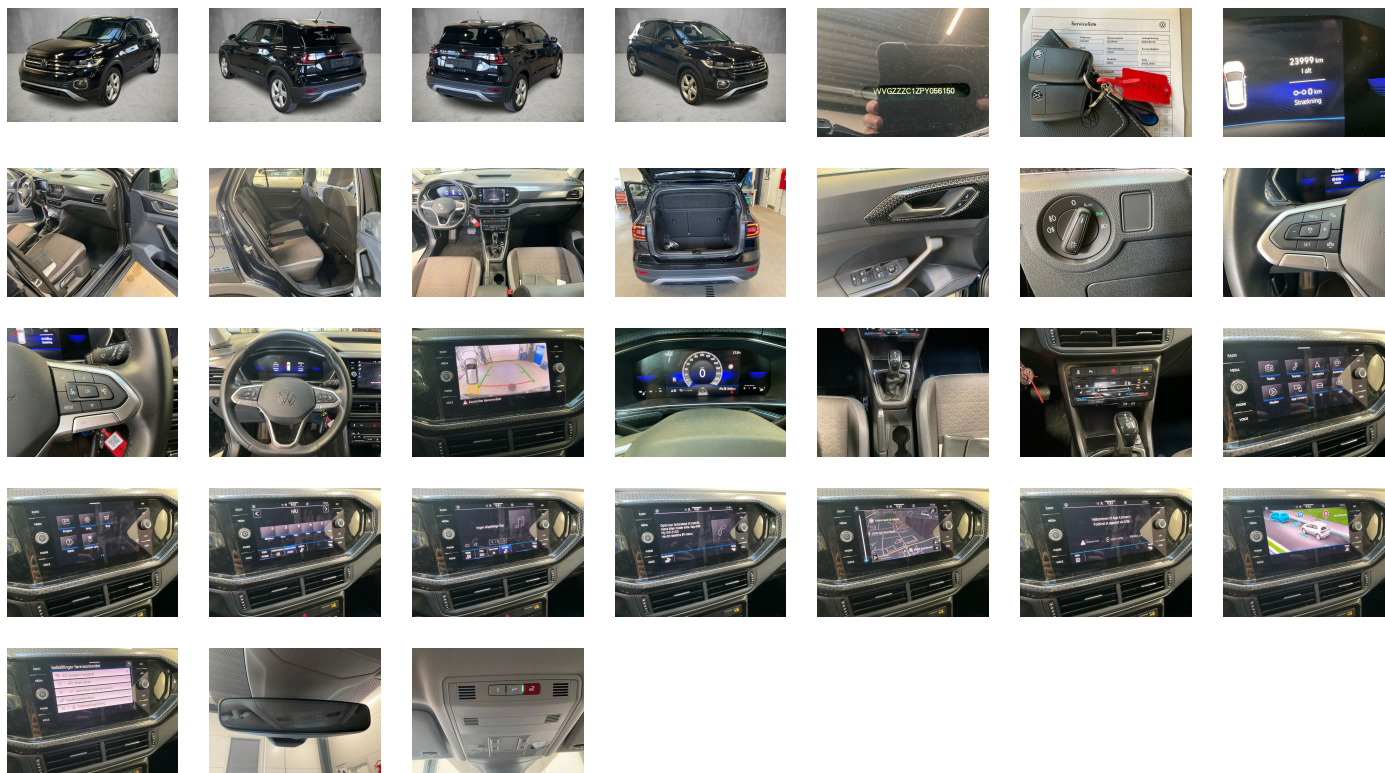
Legal tire tread (minimum 1.6 mm):

Yes

ACCESSORIES



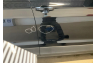




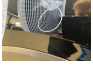
Rear overhang- short, 4 doors, Front stabilizer bar, Wheelbase, Dual-clutch transmission DSG DQ200, Pamplona manufacturing sequence, Without alternative drive system, Without decals and emblems, Standard rear axle, Elimination of nameplate for engine designation on luggage compartment lid, Rear exhaust tailpipe (standard), Carpet mats in front and rear, Manual in Danish, Standard climatic zones, Weight range 14 installation control only- no requirement forecast, Fuel system for fuel-injected SI engine (tropicalized), Electronic Stability Control w/ driver steering recommendation- ABS- ASR- EDL- EDTC and trailer stabilization, Without trailer hitch, Activated carbon canister (Evaporative Emission Control System (EVAP)), Special identification label for EC for M1 passenger vehicles, Tire Mobility Set: 12-volt compressor and tire sealant, Rear shock absorption- heavy-duty version, Disc brakes in rear, Power steering, Trims for alloy wheels, Standard wheel bolts, Without tool kit and jack, Without additional front underbody guard, Warning triangle, Front-wheel drive, Initial standard fuel filling, Disc brakes in front, Without delivery equipment, Height and longitudinally adjustable steering column, Vehicle class differentiation -2GC-, Leather multi-function steering wheel with shifting paddles, Without Adaptive Chassis Control, Body-colored bumpers- radiator grille w/ chrome trim and fin- light elements with chrome bezel, Fresh air intake system with combination filter, Without additional tires, License plate carrier in front and rear (ECE), ISOFIX anchors for child seats on outer rear bench seats and on front passenger seat- compatible for i-Size, 3-point seat belt for center rear seat, Without roof insert (standard roof), Luggage compartment floor adjustable in 2 heights, Completely folding front passenger seat backrest, Front seats with height adjustment, Unsplit rear bench seat- sliding- asymmetric split folding backrest, 3 head restraints in rear, 3-point seat belts in front with height adjustment and seat belt pretensioners, Silver-anodized roof rails, Luggage compartment cover, 3-point seat belts with seat belt pretensioners for the outer rear seats, 4 alloy wheels "Chesterfield" 6.5J x 17, Heated front seats, Door and side trim panel, Emission standard EU6 AP, Laminated safety glass windshield- heat-insulating, Central locking system without SAFELOCK- with radio remote control and 2 remote control folding keys, Privacy glass for rear side windows and rear window, Auto-dimming interior rearview mirror, Rear floor panel module- type 1, Power windows, Map pockets on the back of each front seat, Driver and front passenger airbag with front passenger airbag deactivation, Curtain airbag system for front and rear passengers incl. side airbags in front, Glove compartment door with light, Chrome trim on the side window bottoms, Without adhesive film, Carrier frequency 433.92 MHz-434.42 Mhz, Transport protection film (minimum protection) with additional transport protection measures, Decorative inserts "Lizard" for dashboard, Right exterior mirror-convex, Aspherical exterior mirror on driver side, Vanity mirrors in sun visors, Safety-optimized front head restraints, Front center armrest- longitudinally adjustable- with storage compartment- 2 USB charging sockets in rear, Body-colored exterior mirror housings and door handles, Lane keeping system Lane Assist, Autonomous Emergency Braking Front Assist (for Adaptive Cruise Control ACC up to 210 km/h), Headliner, Hand brake lever handle in leather, Gearshift knob in leather, Lamps in front footwell, Without additional seals outside, Exterior mirrors- power-adjustable- folding and heated- w/ front passenger exterior mirror lowering function, Electronic immobilizer, Without heat accumulator/auxiliary heater, Multi-color Digital Cockpit- selection of different info profiles possible, Tire Pressure Monitoring System, Start-stop system with regenerative braking, Without protective film for scuff plate, Lumbar supports in front, Navigation system "Discover Media" incl. Streaming & Internet, Without extended safety system, Park Distance Control - warning signals for obstacles in the front and rear, Without lane change assist, Radio, Without second battery, Without light control, Alternator 140 A, LED headlamps for low beam and high beam, Aut. headlight control with separate daytime running light- entry lighting and manual exit lighting, Rear window wiper with intermittent control, Rain sensor, Dynamic headlight range control, 6 speakers, LED interior lights with switch-off delay and dimmer- 2 LED reading lights in front and rear, Adaptive Cruise Control ACC stop & go incl. speed limiter, Rear fog light on one side- back-up light on both sides, LED rear combination lamps (except turn signals a. back-up lamps)- with side marker lamp, Warning lamp for washer fluid level, Front fog lamps and cornering light, Without headlamp washer system, Single-tone horn, Not hot country, Diversity antenna for FM reception, Air Care Climatronic 2 zone automatic climate control with enhanced air filter with activated carbon, Luggage compartment lighting, Non-smoker's package: 12-V outlet in front, Warning signal and warning light for front and rear seat belts not fastened, Automatically-heated washer nozzles in front, App-Connect incl. App-Connect Wireless for Apple CarPlay and Android Auto, Mobile phone interface with inductive charging feature, Category 0, Executive equipment, Driving on the right, "Standard Plus" version, Type approval country Denmark, Part set without country-specific prescriptive standard, Operating permit- alteration, 3-cylinder SI engine 1.0 I TSI- 81 kW, No special edition, Without ECO function, Online service- with OCU- with head unit coding- without engine immobilizer interconnection, Driver alert system, Regional code " ECE " for radio, No special purpose vehicle- standard equipment, Shock absorption in front, 7-speed automatic transmission or dual-clutch transmission DSG- note: PR family EDF, Vehicles without special upgrade measures, Battery 320 A (49 Ah), Tires 205/55 R17- rolling resistance class A, Hatchback, Rear view camera system, Refrigerant R1234yf, Left-hand drive, Suspension range 26 installation control only- no requirement forecast, Inserts of front seats and outer rear seats in fabric "Style", Standard battery/alternator capacity, Emergency call service, no registration required- service is activated upon delivery, Without proactive passenger protection system, Adaptive Cruise Control ACC up to 210 km/h and Autonomous Emergency Braking Front Assist, Lights & Vision package, Sports comfort seats in front, LongLife Service Regime, Without voice control, Service indicator 30 000 km or 2 years (variable), Chrome package, Multifunction camera, Drawer under right front seat, Ambient lighting, Dynamic Road Sign Display, Digital radio reception DAB+, Navigation system "Discover Media" incl. Streaming & Internet, MIB3 control, Equipment change, 3-cylinder SI engine 1.0 I, Instrument cluster with electronic speedometer- odometer and trip odometer- tachometer, 2 USB-C ports in the front- 2 USB-C charging sockets on the center console in the rear, Hill start assist, Tires without specification of tire brand, Standard pedal cluster, Pedestrian and cyclist monitoring, Denmark: Comfort package forces 9WX-7P4-9ZV-4KF-6YD, Denmark: DK Package TL forces PLA-WW1-PH3 CL/HL forces PLA-KA1-PH3, Winter package, Preparation for We Connect and We Connect Plus, Equipment options subset for Denmark

PICTURES



Picture viewer: <https://fm.bilsalg.dk/business/picturebrowser?t=full&guid=270eec3d-3c81-4068-b47d-81e1fd574cb2&carid=20477007>

OVERVIEW OF DAMAGES AND SHORTAGES

N°	LOCATION	TYPE	SEVERITY	INSURANCE	NOTES	DAMAGE GROUP
1	L. Rear Door	Dent	C3			
						
2	R. Front Door	Scratch	C3			
						
3	R. Rear Door	Dent	C3			
						
4	L. Rear Quarter Panel	Dent	C3			
						

Severity explanation:

C0 = No damage / C1 = Simple preparation / C2 = Minor preparation needed / C3 = Can be smart repaired / C4 = Repair/spray paint / C5 = Need replacement

ELECTRICAL AND MECHANICAL CONDITION

N°	LOCATION	TYPE	NOTES
1	Is the car drivable	Yes	