

VEHICLE DESCRIPTION - Audi A4 S Line Plus 2.0 40 TFSI MHEV



First registration date:
5/2023

VIN:
WAUZZZF43PA065969

Colour:
Gray Metallic Normal gloss

Mileage (km):
37.461

Gear:
Automatic (7 Gears)

Fuel type:
Hybrid petrol

Body type:
Estate Wagon

Number of doors:
5

Drive type:
FWD

Model year:
2019-2024

Engine power:
150 kW

Number of seats:
5

Engine size (cc):
1984

Interior:

VEHICLE DETAILS

Number of keys:
2

Number of license plates:
2

Registration certificate:
Part 1 & 2 present

Service documentation:
Yes

Inspection date:
28-05-2026

Last service (year/month):
2025/5

Mileage (km) at last service:
23.748

SUMMARY OF THE VEHICLE'S CONDITION

Is the car in a driveable condition:
Yes

Legal tire tread (minimum 1.6 mm):
Yes

WHEELS

TYPE	SEASON	BRAND	POSITION	RIM	SIZE	TREAD
Fitted	Summer tires		Front Left	Alloy rim	18"	3 mm
Fitted	Summer tires		Rear Right	Alloy rim	18"	3 mm
Fitted	Summer tires		Rear Left	Alloy rim	18"	3 mm
Fitted	Summer tires		Front Right	Alloy rim	18"	3 mm

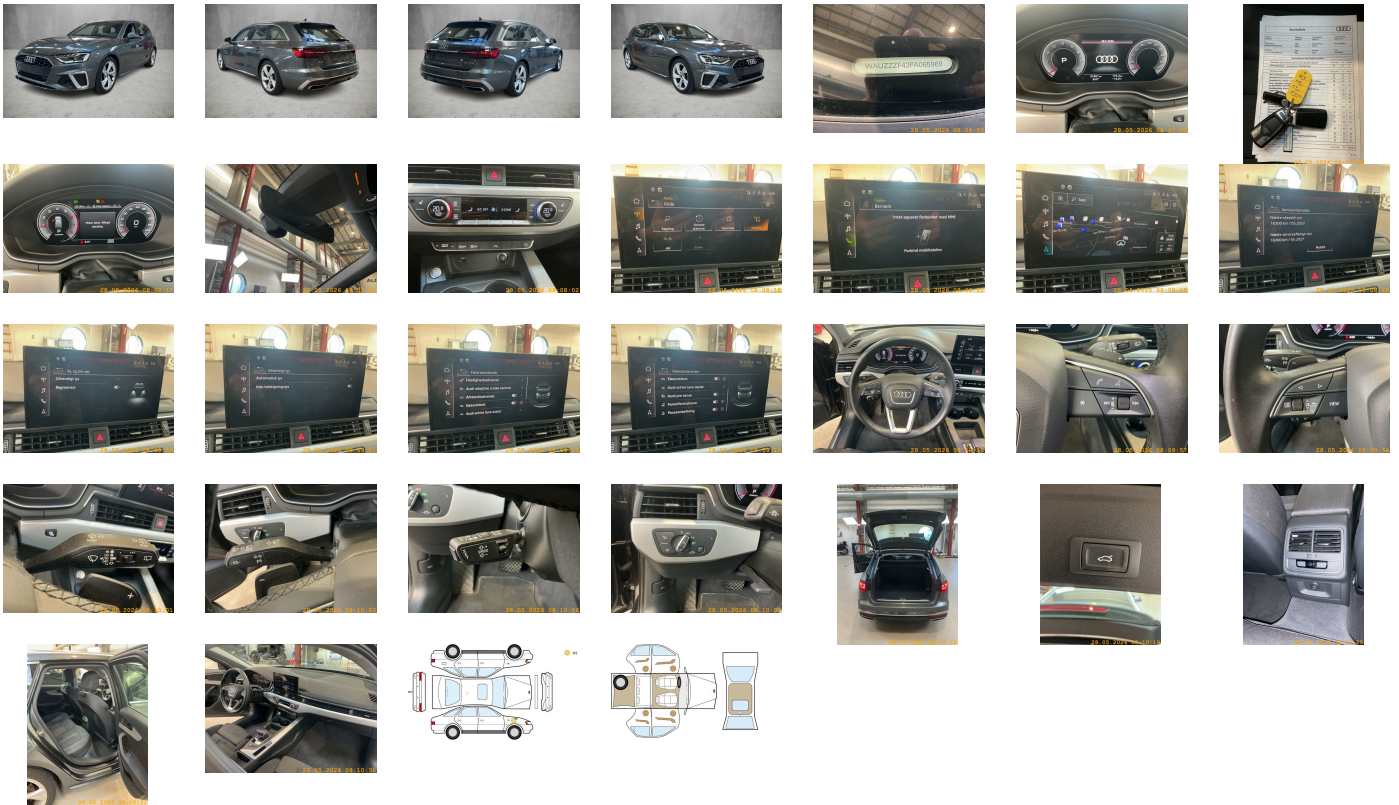
Legal tire tread (minimum 1.6 mm):

Yes

ACCESSORIES

4-cyl. SI eng. 2.0 I/150 kW (16V) turbo FSI- homogen.- base eng. TR6/T2A/T2C/ TC3/TI2/T66/T4X/TI2/T5V/TC1/T1F/T4E/T4M, Regional code " ECE " for radio, No special edition, Control of series production, Without AdBlue tank, Basic equipment variant, Preparation for functions on demand, Production wheels, Country group A, Seat belts in Black, No special purpose vehicle- standard equipment, Without preconditioning, Without antenna amplifier, Without rear differential, Vehicles with special upgrade measures, Accent surfaces- Matt Black, Without Car2X, S tronic, Audi connect navigation & infotainment, Preparation for smartphone interface, Audi connect emergency call & service with Audi connect remote & control, SI engine, Data module- Europe, Tires with optimized rolling resistance- speed-limited- 245/40 R18, Battery 380 A (68 Ah), Without camera systems/accident sensors, Refrigerant R1234yf, Without head-up display, Wagon/Avant, Left-hand drive, Engine cover, Transit coating (type 1), Standard battery/alternator capacity, System cloth, Assist package Tour, LED headlights and LED rear lights with dynamic turn signal in rear, Without Storage package, Service indicator 30 000 km or 2 years (variable), With multifunction camera, Rear window- rear door and side windows in clear glass, Interior lighting, Camera-based traffic sign recognition, Digital Audio Broadcasting, Electromechanical power steering, Sport seats- front, Control (in-plant), 4-cylinder SI engine 2.0 I unit 06N.A 888evo4, Electromechanical parking brake, Instrument cluster- km/h speedometer, Without garage door opener, Standard pedal cluster, Standard electric, Extended pedestrian protection, Door sill trims with aluminum inlays- front- illuminated- S logo, Tires without specification of tire brand, Wheels- 5-Y-spoke- S design- 8.0J x 18- 245/40 R18 tires, Equipment package for Denmark, Equipment package for Denmark, Internal control code, Internal control code, Internal control code, Internal control code, Standard, Standard manufacturing sequence, tiptronic, Weight category front axle weight range 8, Mild hybrid, With special labels safety certificates for Denmark, Fuel tank with increased capacity, Standard exhaust system, Without ignition/starter switch locking system- without steering lock, Floor mats- front and rear, Without special color trim, Manual in Danish, Weight range 7 installation control only- no requirement forecast, Standard climatic zones, Basic, Fuel system for SI engine with direct injection (FSI), Sport suspension, Preparation for trailer hitch, Special identification label (EU), Tire repair kit, Disk brakes- rear- 16-inch (ECE), Disk brakes- front- 16-inch (ECE), Standard wheel bolts, Without additional front underbody guard, Vehicle tool kit, First-aid kit with warning triangle and high-visibility vests, Installation parts for four-cylinder engine, Leather steering wheel- 3-spoke with multifunction plus, Front-wheel drive, Initial standard fuel filling, Without locking and starting systems, Insert for the filling up of unleaded fuel, Audi drive select, Labels in English and German, Bumpers- S line, Without additional tires, Model name as per new output designation, ISOFIX child seat mounting and top tether for the outer rear seats, Without roof insert (standard roof), Loading floor, Without child seat anchora in front (ISOFIX), Without backrest release for front seats, Front seats- manually adjustable, Passenger car design, Split-folding rear seat backrest, Roof rails in aluminum, Without roll-up sunshade, Seat heating- front, Emission standard EU6 AP, Without seat ventilation/massage seat, Luggage compartment lid- electrically opening and closing, Windshield with heat-reflecting glass and acoustic glass, Child-proof lock, Remote control key-without Safelock, Rear and side windows with heat-insulating glazing, Interior mirror- automatically dimming- frameless, Airbags- front, front passenger airbag can be deactivated, Side airbags- front and head airbag system, Gloss package, Luggage compartment trim (design 2), Without special body measures, Carrier frequency 433.92 MHz-434.42 Mhz, Without rear spoiler, Adhesive film, Without front spoiler, Inlays- diamond paint finish- Silver Gray, Exterior mirrors on the right- (large field of view)- convex, Left exterior mirror- aspherical, Sun visors- front, Head restraints- front, Without fire extinguisher, Additional stone guard body covers, Comfort center armrest- front, Exterior mirror housings in body color, Without decorative films/emblems, Roof in body color, Audi active lane assist, Body-colored door handles, Audi pre sense city, Headlining in cloth in specific color, Luggage compartment mat, Rear trim panel (ECE), Front license plate carrier, Exterior mirrors- electrically adjustable and heated, Top speed limited to 210 km/h, Electronic immobilizer, Without heat accumulator/auxiliary heater, Without preparation for VTS (vehicle tracking system), Without leather, Vehicle class differentiation -8W0/8WA-, Tire pressure loss indicator, Start-stop system, Without wind deflector, MMI navigation plus with MMI touch, Without extended safety system, Parking system plus, Without lane change assist, High beam assistant, LED headlights, Lumbar support- pneumatically adjustable with massage function for the front seats, Separate daytime running light, 8 loudspeakers, Audi adaptive cruise control, LED rear lights plus, Without headlamp washer system, Two-tone horn, Not hot country, 3-zone deluxe automatic air conditioning, Without integrated toll system, Belt-driven integrated starter alternator 12 V- 130 - 200 A, Non-smoker version, Without neck heating, Without auxiliary heater/parking heater, Seat belt reminder, Audi virtual cockpit plus, Without additional warning lights, Without "Multimedia" in vehicle, Audi phone box light, Equipment options subset for Denmark, Standard-production quality, Driving on the right, No self-collection, Audi AG, Top speed limited to 210 km/h, S line, Part set without country-specific prescriptive standard, Type approval country Denmark, Operating permit- alteration

PICTURES



Picture viewer: <https://fm.bilsalg.dk/business/picturebrowser?t=full&guid=ce65a4b7-a173-41cd-bed3-0d5ae2b140a9&carid=20476859>

OVERVIEW OF DAMAGES AND SHORTAGES

N°	LOCATION	TYPE	SEVERITY	INSURANCE	NOTES	DAMAGE GROUP
1	R. Front Quarter Panel	Dent	C3			



Severity explanation:

C0 = No damage / C1 = Simple preparation / C2 = Minor preparation needed / C3 = Can be smart repaired / C4 = Repair/spray paint / C5 = Need replacement

ELECTRICAL AND MECHANICAL CONDITION

N°	LOCATION	TYPE	NOTES
1	Is the car drivable	Yes	