

VEHICLE DESCRIPTION - Audi A3 Prestige 1.5 35 TFSI



First registration date:
5/2023

VIN:
WAUZZZGY0PA128768

Colour:
Blue Metallic Normal gloss

Mileage (km):
49.556

Gear:
Automatic (7 Gears)

Fuel type:
Gasoline

Body type:
Hatchback

Number of doors:
5

Drive type:
FWD

Model year:
2020-2024

Engine power:
110 kW

Number of seats:
5

Engine size (cc):
1498

Interior:
Black Fabric

VEHICLE DETAILS

Number of keys:
2

Number of license plates:
2

Registration certificate:
Part 1 & 2 present

Service documentation:
Yes

Inspection date:
27-05-2026

Last service (year/month):
2025/2

Mileage (km) at last service:
28.769

SUMMARY OF THE VEHICLE'S CONDITION

Is the car in a driveable condition:
Yes

Legal tire tread (minimum 1.6 mm):
Yes

WHEELS

TYPE	SEASON	BRAND	POSITION	RIM	SIZE	TREAD
Fitted	Summer tires		Front Left	Alloy rim	17"	4 mm
Fitted	Summer tires		Rear Right	Alloy rim	17"	4 mm
Fitted	Summer tires		Rear Left	Alloy rim	17"	4 mm
Fitted	Summer tires		Front Right	Alloy rim	17"	4 mm

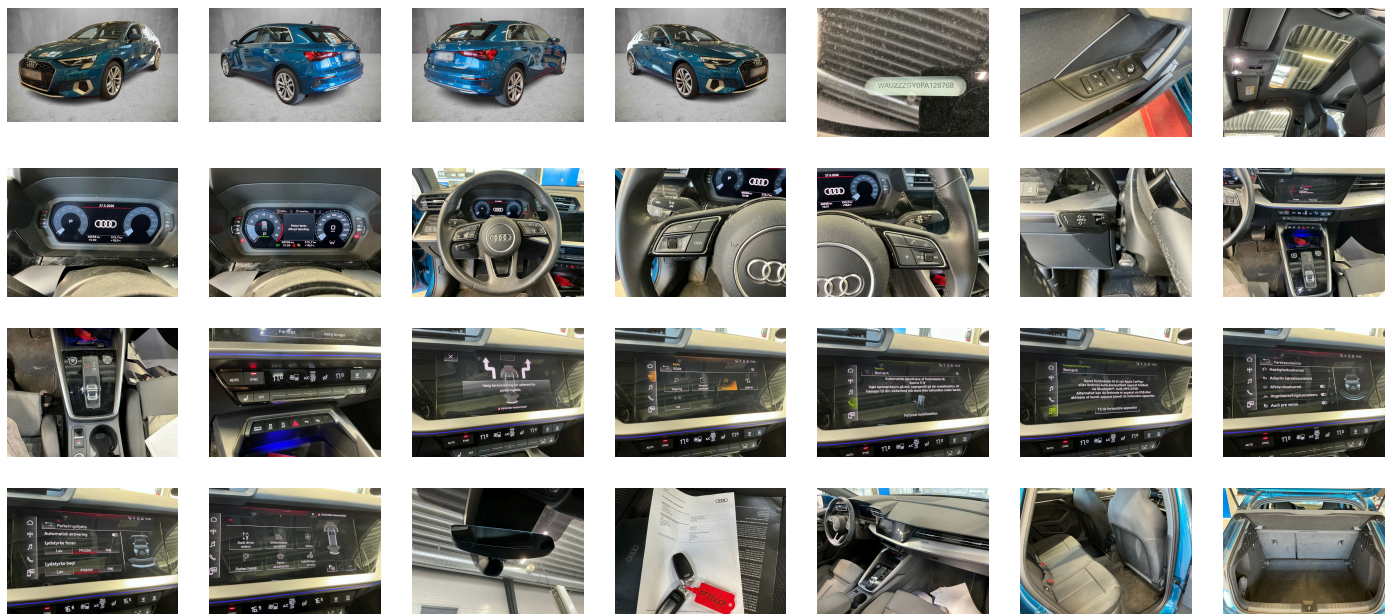
Legal tire tread (minimum 1.6 mm):

Yes

ACCESSORIES

Standard-production quality, Driving on the right, No self-collection, Audi AG, advanced, Part set without country-specific prescriptive standard, Type approval country Denmark, Wheels- 5-parallel-spoke- 8.0J x 17- 225/45 R17 tires, Operating permit- alteration, 4-cylinder SI engine 1.5 l/110 kW mild hybrid- TSI base engine is TJ7, ECO function, Regional code " ECE " for radio, Without vehicle inlet, Without mains cable for domestic connector for the e-tron charging system, No special edition, Control of series production, Basic equipment variant, Preparation for functions on demand, Production wheels, N.N.N. Type 1, No special purpose vehicle-standard equipment, Without preconditioning, Without antenna amplifier, Without acoustic vehicle alerting system, Without additional measures for interior drive sound, Vehicles without special upgrade measures, Shock absorption in front, 7-speed automatic transmission, Tires 225/45 R17 91Y, Audi connect navigation & infotainment on demand, Smartphone interface, Audi connect emergency call & service with Audi connect remote & control, SI engine, MMI radio plus, Data module- Europe, Battery 420 A (70 Ah), Without camera systems/accident sensors, Refrigerant R1234yf, Without head-up display, Sportsback, Left-hand drive, Suspension range 08 installation control only- no requirement forecast, Without charging dock, Engine cover, Transit coating (type 1), Without control unit for charging system, Standard battery/alternator capacity, Statutory emergency call, Routine cloth, Matrix LED headlamps- LED rear combination lamps and headlamp washer system, Without Storage package, LongLife Service Regime, Service indicator 30 000 km or 2 years (variable), Interior in aluminum look, With multifunction camera, Rear window- rear door and side windows in clear glass, Ambient lighting package plus, Without camera-based traffic sign recognition, Digital Audio Broadcasting, Sport seats- front, Control (in-plant), 4-cylinder SI engine 1.5 l unit 05E.A, Electromechanical parking brake, Instrument cluster- km/h speedometer, Without garage door opener, Standard pedal cluster, Tires without specification of tire brand, Equipment package for Denmark, Equipment package for Denmark, Internal control code, Internal control code, Front stabilizer bar, Rear stabilizer bar, Wheelbase, Installation differentiation for transmission DQ200 -- vehicle components --, Mild hybrid, With special labels safety certificates for Denmark, 4-link rear axle, Standard exhaust system, Floor mats- front and rear, Manual in Danish, Weight range 5 installation control only- no requirement forecast, Standard climatic zones, Brake control system for vehicles with electric drive (ESC and electromechanical brake booster), Fuel system for fuel-injected SI engine, Special identification label (EU), Activated carbon canister (Evaporative Emission Control System (EVAP)), Tire repair kit, Seat belt reminder with seat occupancy sensor- rear, Standard suspension, Disc brakes in rear- 15-inch (ECE), Preparation for trailer hitch, Electromechanical power steering, Standard wheel bolts, Without additional front underbody guard, Tool kit, First-aid kit with warning triangle, Leather steering wheel- 3-spoke with multifunction plus and shift paddles, Front-wheel drive, Disc brakes in front- 15-inch (ECE), Initial standard fuel filling, Vehicle class differentiation -8Y0/8YF-, Audi connect key, Audi drive select, Bumpers- advanced, Labels in English and German, Without additional tires, Model name as per new output designation, Without electric motor (hybrid), i-Size and top tether for the outer rear seats, Panoramic glass roof, Without backrest release for front seats, Front seats- manually adjustable, Rear seat backrest- folding, Omission of roof rails, Three rear head restraints, Rear license plate carrier (ECE), Seat heating- front, Emission standard EU6 AP, Manual luggage compartment lid, Windshield with heat-insulating glass, Swerve assist and turn assist, Child-proof lock- manual, Convenience key without Safelock, Interior mirror- automatically dimming- frameless, Rear floor panel module- type 5, Airbags- front, front passenger airbag can be deactivated, Gloss package, Without special body measures, UWB-capable country and carrier frequency- 433.92 to 434.42 MHz, Exterior mirrors: aspherical on driver side- convex on front passenger side, Roof edge spoiler, Adhesive film, Without front spoiler, Inlay- Aluminum Spectrum- Dark, Front head restraints, Without fire extinguisher, Side airbags- front with head airbag system and interaction airbag- front, Standard side sills, Center armrest- front, Exterior mirror housings in body color, Without decorative films/emblems, "Basic", Lane departure warning, Headliner in fabric- specific color, Exterior mirrors- electrically adjustable- heated and folding- automatically dimming on both sides, Speed limiter, Electronic immobilizer, USB ports with charging function in the rear, Without heat accumulator/auxiliary heater, Gearshift/selector lever handle, Not leather-covered, Digital instrument cluster, Tire pressure loss indicator, Start-stop system, Door sill trims with aluminum inlays- front, Without lumbar support in seat backrests, Without navigation system, Without extended safety system, Park assist with parking system plus, Without lane change assist, Without mains cable for industrial connector for the e-tron charging system, Without charging cable for public charging (AC)- mode 3, Without second battery, Matrix LED headlights with dynamic light sequencing and dynamic turn signal, Matrix LED headlights with dynamic light sequencing and dynamic turn signal, Audi pre sense front, Separate daytime running light, Rear window wiper and washer system with intermittent control, Light/rain sensor, 6 speakers (passive), Adaptive cruise control, LED rear lights with dynamic light sequencing and dynamic turn signal, Headlight cleaning system, Two-tone horn, Not hot country, 2-zone deluxe automatic air conditioning, Belt-driven integrated starter alternator 48 V 110 - 250 A, Non-smoker version, Without auxiliary heater/parking heater, Without logo projection, Audi phone box light, Equipment options subset for Denmark

PICTURES



Picture viewer: <https://fm.bilsalg.dk/business/picturebrowser?t=full&guid=10b2bedf-5b25-4b52-adf1-58ad043ef1c1&carid=20469361>

OVERVIEW OF DAMAGES AND SHORTAGES

N°	LOCATION	TYPE	SEVERITY	INSURANCE	NOTES	DAMAGE GROUP
1	L. Front door	Dent	C3			
						

Severity explanation:

C0 = No damage / C1 = Simple preparation / C2 = Minor preparation needed / C3 = Can be smart repaired / C4 = Repair/spray paint / C5 = Need replacement

ELECTRICAL AND MECHANICAL CONDITION

N°	LOCATION	TYPE	NOTES
1	Is the car drivable	Yes	