

VEHICLE DESCRIPTION - Audi A6 Sport Prestige 2.0 55 TFSI e PHEV



First registration date:
5/2023

VIN:
WAUZZZF27PN054769

Colour:
Dark gray Metallic Normal gloss

Mileage (km):
67.916

Gear:
Automatic (7 Gears)

Fuel type:
Hybrid petrol

Body type:
Estate Wagon

Number of doors:
5

Drive type:
4WD

Model year:
2018-2023

Engine power:
270 kW

Number of seats:
5

Engine size (cc):
1984

Interior:
Black Partial leatherette

VEHICLE DETAILS

Number of keys:
2

Number of license plates:
2

Registration certificate:
Part 1 & 2 present

Service documentation:
Yes

Inspection date:
29-05-2026

Last service (year/month):
2026/4

Mileage (km) at last service:
66.636

SUMMARY OF THE VEHICLE'S CONDITION

Is the car in a driveable condition:
Yes

Legal tire tread (minimum 1.6 mm):
Yes

WHEELS

TYPE	SEASON	BRAND	POSITION	RIM	SIZE	TREAD
Fitted	Summer tires		Front Left	Alloy rim	19"	7 mm
Fitted	Summer tires		Rear Right	Alloy rim	19"	7 mm
Fitted	Summer tires		Rear Left	Alloy rim	19"	7 mm
Fitted	Summer tires		Front Right	Alloy rim	19"	7 mm

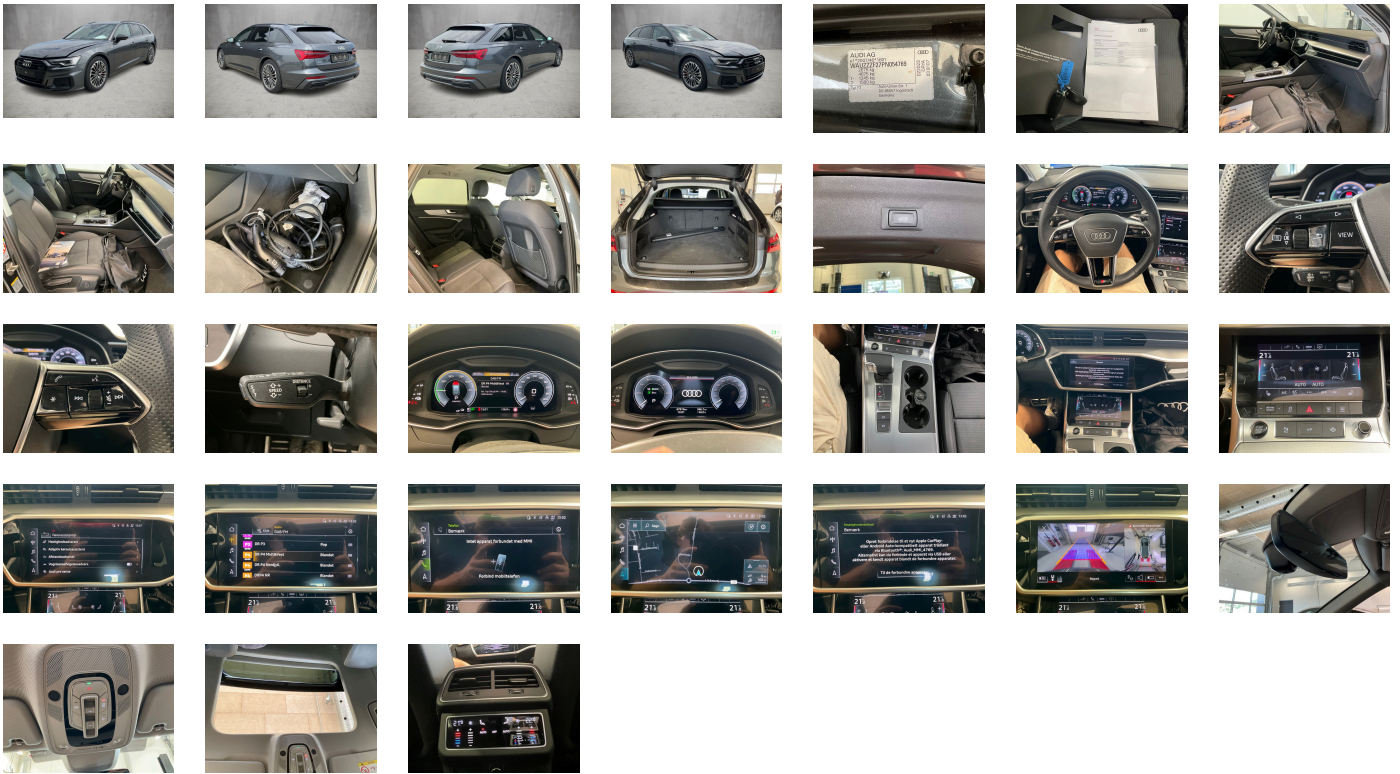
Legal tire tread (minimum 1.6 mm):

Yes

ACCESSORIES


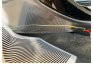



Standard-production quality, Driving on the right, No self-collection, Audi AG, sport, Part set without country-specific prescriptive standard, Type approval country Denmark, Operating permit- alteration, Without noise cancellation, Regional code " ECE " for radio, Charging socket AC type 2, No special edition, Control of series production, Without AdBlue tank, Basic equipment variant, Preparation for functions on demand, Production wheels, Park assist plus, Country group A, N.N.N. Type 1, No special purpose vehicle- standard equipment, Auxiliary air conditioning, Without antenna amplifier, quattro (with ultra technology), Without combined lateral and longitudinal control, Acoustic vehicle alerting system, Vehicles without special upgrade measures, Control buttons- Matt Black, Without Car2X, Manually operated doors, S tronic (for all-wheel drive), Tires 245/45 R19, Audi connect navigation & infotainment, Smartphone interface, Audi connect emergency call & service with Audi connect remote & control, SI engine, Top infotainment system Premium (MIB3), Data module- Europe, Without front cross traffic assist, Battery 380 A (68 Ah), Surround view cameras, Refrigerant R1234yf, Without head-up display, Wagon/Avant, Left-hand drive, 4-cyl. SI engine 2.0 l/195 kW- hybrid- turbo FSI- system output 270 kW base engine is T4H, Without wall mount, Transit coating (type 1), Dinamica Frequency microfiber/leather combination with S embossing, Assist package Tour, Assist package Park with park assist plus, Without Storage package, Service indicator 30 000 km or 2 years (variable), With multifunction camera, Sun protection glass- tinted, Interior lighting, Camera-based traffic sign recognition, Digital Audio Broadcasting, Without central control unit, Progressive steering, Sport seats- front, 4-cylinder SI engine 2.0 l unit 06N.E, Audi music interface, Instrument cluster- km/h speedometer, Without garage door opener, Stainless steel pedals and footrest, Standard electric, Extended pedestrian protection, Door sill trims with aluminum inlays- front and rear- illuminated- front with S logo, Tires without specification of tire brand, Wheels- multi-spoke- Graphite Gray- gloss turned finish- 8.5J x 19- 245/45 R19 tires, Equipment package for Denmark, Internal control code, Internal control code, Internal control code, Standard manufacturing sequence, Weight category front axle weight range 11, Hybrid propulsion system PHEV, With special labels safety certificates for Denmark, Fuel tank, S line logo- exterior, Without all-wheel steering, Standard exhaust system, Without ignition/starter switch locking system- without steering lock, Floor mats- front and rear, Manual in Danish, Weight range 12 installation control only- no requirement forecast, Standard climatic zones, Fuel system for SI engine with direct injection (FSI), Tire repair kit, Sport suspension, Preparation for trailer hitch, Special identification label (EU), Seat occupancy sensor, Standard wheel bolts, Standard suspension, Without additional front underbody guard, Vehicle tool kit, Vehicle class differentiation- 4K0/4KA-, First-aid kit with warning triangle and high-visibility vests, Installation parts for four-cylinder engine, Leather steering wheel- 3-spoke with multifunction-shift paddles and steering wheel heating, quattro, Disk brakes- front- 18-inch- brake calipers painted Red (ECE), Increase in initial standard fuel filling, Safety steering column, Disc brakes in rear- 17-inch- brake calipers painted in Red (ECE), Without locking and starting systems, Audi drive select, Labels in English and German, Bumpers- S line, Without Air Quality package, Without additional tires, Model name as per new output designation, Electric motor (hybrid electric vehicle)- total system output 270 kW- unit 0ED.D/0EE.A, ISOFIX child seat mounting and top tether for the outer rear seats, Without partition, Panoramic glass roof, Loading floor, ISOFIX child seat mounting for the front passenger seat, Without leather parts scope, Front seats- manually adjustable, Passenger car design, Split-folding rear seat backrest, Roof rails in Black, Without roll-up sunshade, Seat heating- front, Emission standard EU6 AP, Without seat ventilation/massage seat, Luggage compartment lid- electrically opening and closing, Windshield with heat-reflecting glass, Remote control key- without Safelock, Rear and side windows with heat-insulating glazing, Interior mirror- automatically dimming- frameless, Airbags- front, front passenger airbag can be deactivated, Without front passenger seat control, Side airbags- front and head airbag system, Black Styling package, Without special body measures, Carrier frequency 433.92 MHz-434.42 Mhz, Body-colored rear spoiler, Adhesive film, Without front spoiler, Sun visors- front, Exterior mirrors on the right- (large field of view)- convex, Left exterior mirror- aspherical, Inlays- Matt Brushed Aluminum- Dark, Head restraints- front, Without fire extinguisher, Without additional side body covers (stone guard), Comfort center armrest- front, Exterior mirror housings in Black, Emblems, Adaptive cruise assist with emergency assist, Audi pre sense front, Headlining in cloth in specific color, Dashboard and door trim panel one-piece- single color, Rear trim panel (ECE), Front license plate carrier, Exterior mirrors- electrically adjustable- heated and folding- automatically dimming on both sides, Speed limiter, Electronic immobilizer, Without CD changer/CD player, Without heat accumulator/auxiliary heater, Gearshift/selector lever handle, Without preparation for VTS (vehicle tracking system), Without leather, Tire pressure loss indicator, Start-stop system, 4-way lumbar support for the front seats, MMI navigation plus with MMI touch response, Audi pre sense basic, Park assist with parking system plus, Without lane change assist, e-tron charging system compact (AC) with domestic connector type K (Denmark), Industrial connector CEE 16A- 400V- for the e-tron charging system, Charging cable for public charging- mode 3- 11 kW (AC), Without alternator, Matrix LED headlights, LED headlights, Separate daytime running light, LED rear lights with dynamic turn signal, Adaptive cruise control with speed limiter- efficiency- swerve and turn assist, Headlight cleaning system, Two-tone horn, Not hot country, 4-zone deluxe automatic air conditioning, Without integrated toll system, Non-smoker version, Without auxiliary heater/parking heater, Windshield wiper arms and blades- standard, Without night vision, Audi virtual cockpit, Without additional warning lights, Audi sound system, Without "Multimedia" in vehicle, Bluetooth interface, Equipment options subset for Denmark

PICTURES



Picture viewer: <https://fm.bilsalg.dk/business/picturebrowser?t=full&guid=24c988b2-4c29-4925-a6b1-edefc51b10fe&carid=20443118>

OVERVIEW OF DAMAGES AND SHORTAGES

N°	LOCATION	TYPE	SEVERITY	INSURANCE	NOTES	DAMAGE GROUP
1	Front Bumper	Dent	C4		Reporting needed	
						
2	L. Rear Rim	Scratch	C4		Reporting needed	
						

Severity explanation:

C0 = No damage / C1 = Simple preparation / C2 = Minor preparation needed / C3 = Can be smart repaired / C4 = Repair/spray paint / C5 = Need replacement

ELECTRICAL AND MECHANICAL CONDITION

N°	LOCATION	TYPE	NOTES
1	Is the car drivable	Yes	