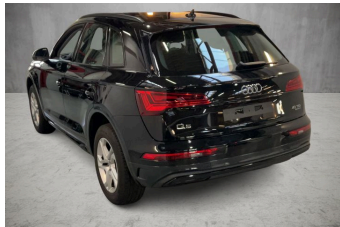


**VEHICLE DESCRIPTION - Audi Q5 Prestige Midnight Edition 2.0 40 TDI MHEV**



**First registration date:**  
5/2023

**VIN:**  
WAUZZZFYP2P108856

**Colour:**  
Black Metallic Normal gloss

**Mileage (km):**  
80.941

**Gear:**  
Automatic (7 Gears)

**Fuel type:**  
Hybrid diesel

**Body type:**  
SUV

**Number of doors:**  
5

**Drive type:**  
4WD

**Model year:**  
2020-2025

**Engine power:**  
150 kW

**Number of seats:**  
5

**Engine size (cc):**  
1968

**Interior:**

**VEHICLE DETAILS**

**Number of keys:**  
2

**Number of license plates:**  
2

**Registration certificate:**  
Part 1 & 2 present

**Service documentation:**  
No

**Inspection date:**  
02-06-2026

**Last service (year/month):**


**Mileage (km) at last service:**

**SUMMARY OF THE VEHICLE'S CONDITION**

**Is the car in a driveable condition:**  
Yes

**Legal tire tread (minimum 1.6 mm):**  
Yes

## WHEELS

 TYPE	SEASON	BRAND	POSITION	RIM	SIZE	TREAD
Fitted	Summer tires		Front Left	Alloy rim	18"	2 mm
Fitted	Summer tires		Rear Right	Alloy rim	18"	2 mm
Fitted	Summer tires		Rear Left	Alloy rim	18"	2 mm
Fitted	Summer tires		Front Right	Alloy rim	18"	2 mm

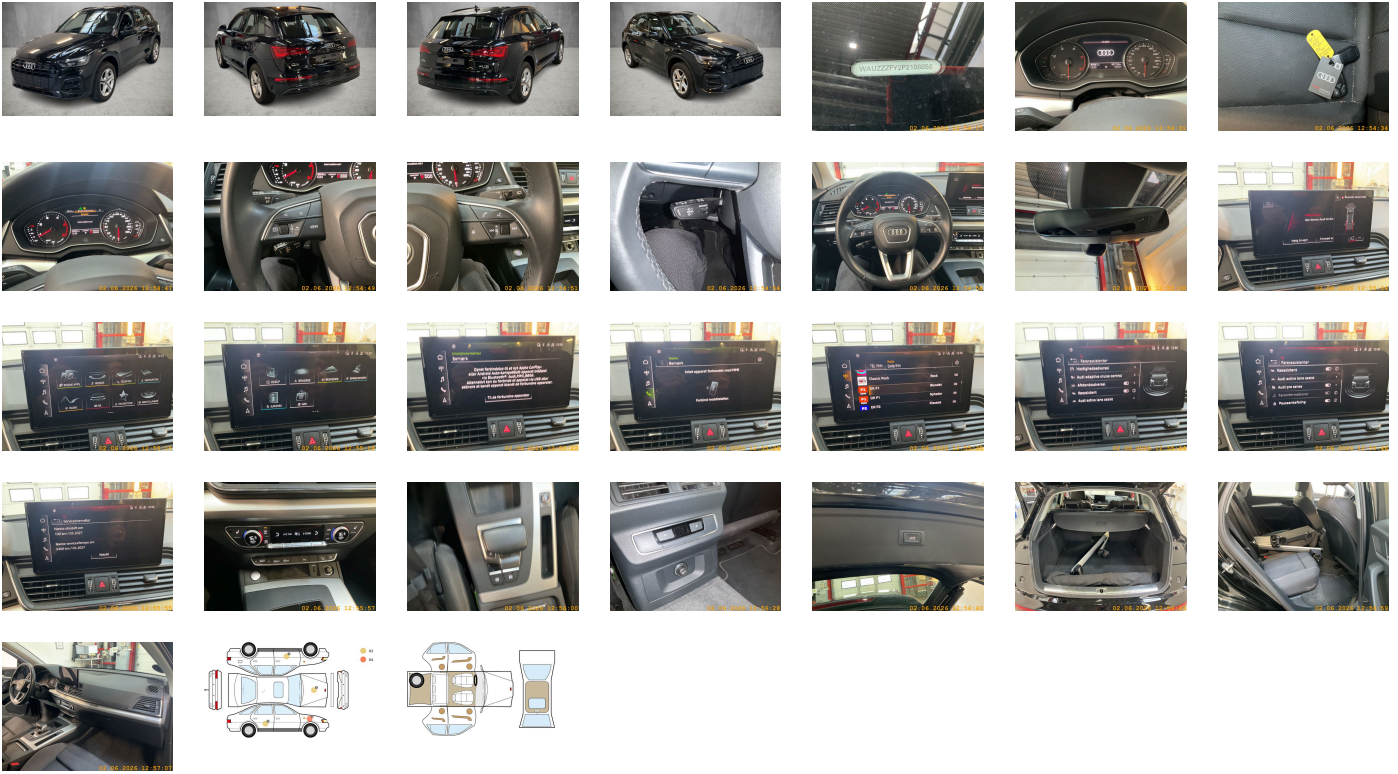
### Legal tire tread (minimum 1.6 mm):

Yes

## ACCESSORIES



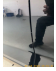



Basic, Standard, Fuel system for diesel engine, Standard manufacturing sequence, tiptronic, Weight category front axle weight range 6, Mild hybrid, With special labels safety certificates for Denmark, Fuel tank with increased capacity, Without ignition/starter switch locking system- without steering lock, Floor mats- front and rear, Manual in Danish, Standard climatic zones, Weight range 6 installation control only- no requirement forecast, Standard suspension, Preparation for trailer hitch, Special identification label (EU), Tire repair kit, Disc brakes in rear- 17-inch (ECE), Disk brakes- front- 17-inch (ECE), Standard suspension, Wheel bolts- anti-theft, Vehicle tool kit (without vehicle jack), Without additional front underbody guard, First-aid kit with warning triangle and high-visibility vests, Installation parts for four-cylinder engine, quattro, Leather steering wheel- 3-spoke with multifunction plus, Increase in initial standard fuel filling, Without electric motor (hybrid), Axial and vertical adjustable steering column, Without locking and starting systems, Filler neck module 1 without insert, Audi drive select, Reinforced bumpers, Labels in English and German, Loading sill protector- stainless steel, Without additional tires, Model name as per new output designation, ISOFIX child seat mounting and top tether for the outer rear seats, Partition net, Without roof insert (standard roof), Without child seat anchora in front (ISOFIX), Loading floor, Front seats- manually adjustable, Passenger car design, Split-folding rear seat backrest, Black roof rails with roof rack detection system, Luggage compartment cover, Without roll-up sunshade, Wheels- 5-twin-spoke dynamic- 8.0J x 18 235/60 R18 tires, Seat heating- front, Emission standard EU6 AP, Without seat ventilation/massage seat, Luggage compartment lid- electrically opening and closing, Windshield with heat-reflecting glass and acoustic glass, Manual child safety lock, Remote control key- without Safelock, Rear and side windows with heat-insulating glazing, Interior mirror- automatically dimming- frameless, Beverage holders, Airbags- front, front passenger airbag can be deactivated, Side airbags- front and head airbag system, Black Styling package, Without special body measures, Carrier frequency 433.92 MHz-434.42 Mhz, Rear spoiler, Adhesive film, Inlays- Micrometallic- Silver, Left exterior mirror- aspherical, Sun visors- front, Head restraints- front, Without fire extinguisher, Comfort center armrest- front, Without decorative films/emblems, Exterior mirror housings in Black, Audi active lane assist, Audi pre sense city, Headlining in cloth in specific color, Luggage compartment mat, Right exterior mirror- aspherical, Rear trim panel (ECE), Without front license plate carrier, Exterior mirrors- electrically adjustable and heated, Without mains cable for industrial connector for the e-tron charging system, Without charging cable for public charging (AC)- mode 3, Electronic immobilizer, Electric auxiliary air heater, Gearshift/selector lever handle, Without preparation for VTS (vehicle tracking system), Without leather, Vehicle class differentiation -FY0/FYF-, Tire pressure loss indicator, Start-stop system, Door sill trims with aluminum inlays- front, 4-way lumbar support for the front seats, Preparation for navigation system High for function-on-demand feature, Without extended safety system, Parking system plus, Without lane change assist, High beam assistant, LED headlights, Separate daytime running light, 8 loudspeakers, Audi adaptive cruise control, LED rear lights, Without headlamp washer system, Two-tone horn, Not hot country, 3-zone deluxe automatic air conditioning, Without integrated toll system, Belt-driven integrated starter alternator 12 V- 130 - 200 A, Non-smoker version, Without auxiliary heater/parking heater, Seat belt reminder, Driver information system with color display, Without additional warning lights, Audi phone box light, No self-collection, Audi AG, Category 0, advanced, Standard-production quality, Driving on the right, Type approval country Denmark, Part set without country-specific prescriptive standard, Operating permit- alteration, 4-cyl. turbo diesel engine 2.0 l/150 kW (4V) TDI- common rail base engine is T6F/T98/T48/T4T/T1T/T1H, No special edition, Regional code " ECE " for radio, Without vehicle inlet, Without e-tron charging system compact (AC)- without mains cable for domestic connector, No special purpose vehicle- standard equipment, Control of series production, AdBlue tank with increased capacity, Basic equipment variant, Preparation for functions on demand, Production wheels, Country group A, S tronic (for all-wheel drive), Without preconditioning, Without antenna amplifier, quattro with ultra technology, Without acoustic vehicle alerting system, Vehicles with special upgrade measures, With connect package 6, Accent surfaces- Matt Black, Without Car2X, Tires 235/60 R18 103W, Smartphone interface, Audi connect emergency call & service with Audi connect remote & control, Diesel engine, Battery 380 A (68 Ah), Data module- Europe, Box, Without camera systems/accident sensors, Refrigerant R1234yf, Without head-up display, Left-hand drive, Impressum cloth, Without wall mount, Transit coating (type 2), Assist package including Audi pre sense plus for export markets, Sport seats- front, Without Storage package, Service indicator 30 000 km or 2 years ( variable ), With multifunction camera, Clear glass, Interior lighting, Without dynamic road sign display, Without step, Digital Audio Broadcasting, Electromechanical power steering, 4-cylinder diesel engine 2.0 l unit 05L.A, Instrument cluster- km/h speedometer, Hold assist, Tires without specification of tire brand, Without garage door opener, Standard pedal cluster, Standard electric, Extended pedestrian protection, Without danger alarm system, Equipment package for Denmark, Internal control code, Internal control code, Internal control code, Equipment options subset for Denmark

**PICTURES**



**Picture viewer:** <https://fm.bilsalg.dk/business/picturebrowser?t=full&guid=dcc0db5e-cb54-4d22-906d-95e6b544d33f&carid=20443099>

## OVERVIEW OF DAMAGES AND SHORTAGES

N°	LOCATION	TYPE	SEVERITY	INSURANCE	NOTES	DAMAGE GROUP
1	R. Front Quarter Panel 	Dent 	C4		Reporting needed	
2	Hood	Stone Chips	C3			
3	L. Front door 	Scratch 	C3			
4	R. Rear Door 	Dent 	C3			

Severity explanation:

C0 = No damage / C1 = Simple preparation / C2 = Minor preparation needed / C3 = Can be smart repaired / C4 = Repair/spray paint / C5 = Need replacement

## ELECTRICAL AND MECHANICAL CONDITION

N°	LOCATION	TYPE	NOTES
1	Is the car drivable	Yes	