

VEHICLE DESCRIPTION - Audi Q3 Attitude Plus 1.5 35 TFSI MHEV



First registration date:
5/2023

VIN:
WAUZZZF30P1107019

Colour:
null Metallic Normal gloss

Mileage (km):
73.674

Gear:
Automatic (6 Gears)

Fuel type:
Hybrid petrol

Body type:
SUV

Number of doors:
5

Drive type:
FWD

Model year:
2019-2025

Engine power:
110 kW

Number of seats:
5

Engine size (cc):
1498

Interior:
Grey Fabric

VEHICLE DETAILS

Number of keys:
2

Number of license plates:
2

Registration certificate:
Part 1 & 2 present

Service documentation:
Yes

Inspection date:
28-05-2026

Last service (year/month):
2025/8

Mileage (km) at last service:
59.460

SUMMARY OF THE VEHICLE'S CONDITION

Is the car in a driveable condition:
Yes

Legal tire tread (minimum 1.6 mm):
Yes

WHEELS

TYPE	SEASON	BRAND	POSITION	RIM	SIZE	TREAD
Fitted	All year tires		Front Left	Alloy rim	17"	2 mm
Fitted	All year tires		Rear Right	Alloy rim	17"	5 mm
Fitted	All year tires		Rear Left	Alloy rim	17"	5 mm
Fitted	All year tires		Front Right	Alloy rim	17"	2 mm

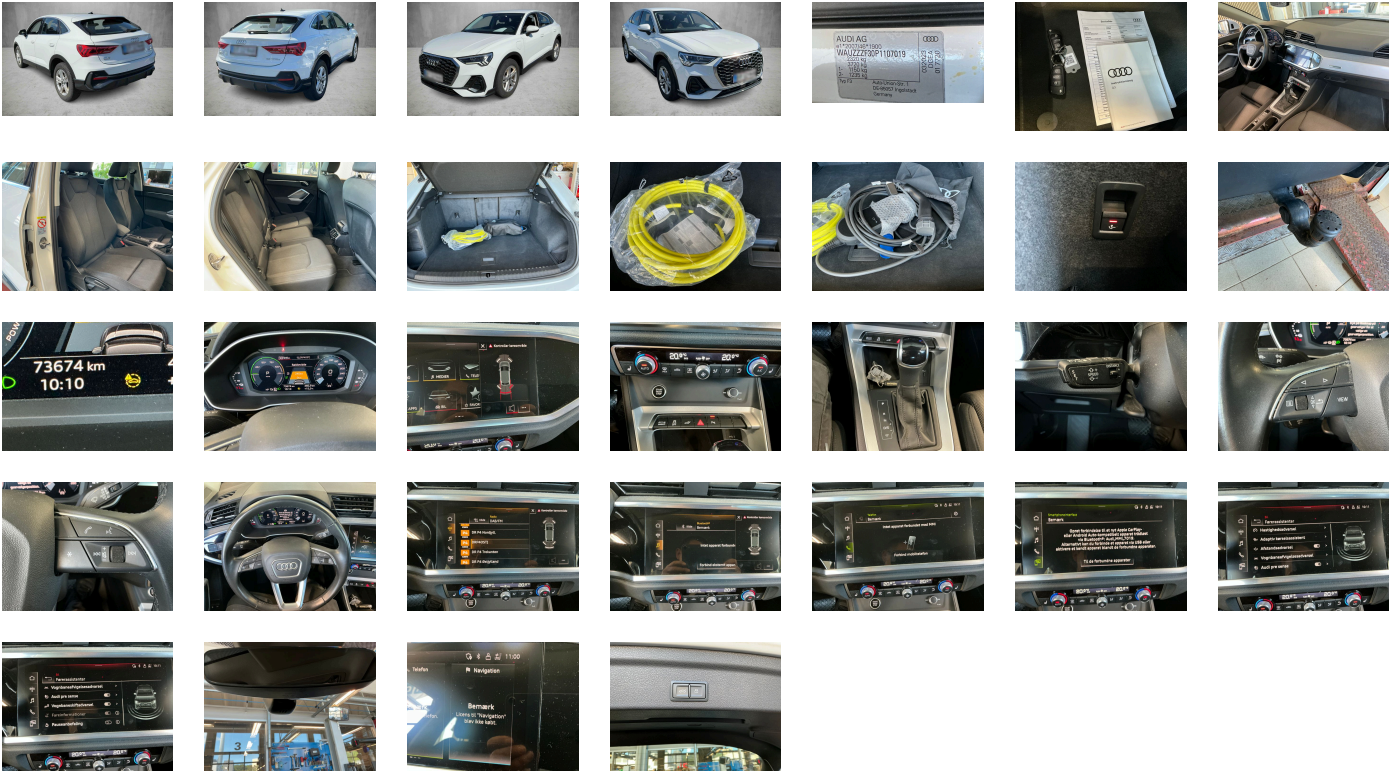
Legal tire tread (minimum 1.6 mm):

Yes

ACCESSORIES







Trailer hitch aftermarket equipment- mechanically swiveling- manual, Standard-production quality, Driving on the right, No self-collection, Audi AG, Basic exterior, Part set without country-specific prescriptive standard, Type approval country Denmark, Wheels- 5-twin-spoke- 7.0J x 17- 215/65 R17 tires, Operating permit-alternation, 4-cylinder SI engine 1.4 l/110 kW TSI- hybrid base engine is TH8/T9D, ECO function, Audi connect remote & control (for MMI navigation plus), Regional code " ECE " for radio, No special edition, Control of series production, Basic equipment, Production wheels, N.N.N. Type 1, No special purpose vehicle- standard equipment, Without antenna amplifier, Acoustic vehicle alerting system, Without sound measures for the vehicle interior (for Audi/Seat only), Vehicles without special upgrade measures, Accent surfaces- Gloss Black, S tronic, Shock absorption in front, Audi connect navigation & infotainment, SI engine, Top infotainment system High (MIB3), Battery 340 A (58 Ah), Tires 215/65 R17 99V super-low rolling resistance- generation 2, Without camera systems/accident sensors, Refrigerant R1234yf, Body style variant 1, Left-hand drive, Suspension range 04 installation control only- no requirement forecast, Without wall mount, Engine cover, Transit coating (type 1), e-tron charging system compact, Standard battery/alternator capacity, Statutory emergency call, Fabric "Index", Assist package, Preparation for MMI navigation plus, LED headlights and LED rear lights with dynamic turn signal in rear, Without Storage package, LongLife Service Regime, Speech dialog system, Service indicator 15 000 km or 1 year (fix), Interior in aluminum look, With multifunction camera, Rear window- rear door and side windows in clear glass, Interior lighting, Without dynamic road sign display, Digital Audio Broadcasting, Sport seats- front, Control of special edition prices, 4-cylinder SI engine 1.4 l unit 04E.C, Hill hold assist, Electromechanical parking brake, Smartphone interface, Standard rear seat release, Instrument cluster- km/h speedometer, Without garage door opener, Standard pedal cluster, Extended and proactive pedestrian and cyclist protection, Tires without specification of tire brand, Equipment package for Denmark, Equipment package for Denmark, Internal control code, Internal control code, Internal control code, Front stabilizer bar, Rear stabilizer bar, Wheelbase, Standard manufacturing sequence, Installation differentiation for transmission DQ400 -- vehicle components --, Hybrid propulsion system PHEV, With special labels safety certificates for Denmark, Standard exhaust system, Without electronic steering column lock, Floor mats- front and rear, Manual in Danish, Weight range 7 installation control only- no requirement forecast, Standard climatic zones, Brake control system for vehicles with electric drive (ESC and electromechanical brake booster), Fuel system for fuel-injected SI engine, Special identification label (EU), Activated carbon canister (Evaporative Emission Control System (EVAP)), Tire repair kit, Seat occupancy sensor, Comfort suspension, Disk brakes- front- 17-inch (ECE), Trims for alloy wheels, Progressive steering, Standard wheel bolts, Without additional front underbody guard, Tool kit, Vehicle class differentiation -F30/F3A-, First-aid kit with warning triangle, Without folding table on front seat backrest, Installation parts for four-cylinder engine, Leather steering wheel- 3-spoke with multifunction plus, Front-wheel drive, Increase in initial standard fuel filling, Disc brakes in rear, Audi drive select, Bumpers- standard, Labels in English and German, Loading sill protector- plastic, Without additional tires, Model name as per new output designation, Electric motor (hybrid) system output 180 kW units 0ED.B/0EK.A/0T3B, ISOFIX and top tether for outer rear seats, Without partition, Without roof insert (standard roof), Without child seat mounting- front (ISOFIX), Without backrest release for front seats, Front seats- manually adjustable, Without special measures, Omission of roof rails, Head restraints- rear (3), 3-point seat belts- outer rear with ECE label, Rear license plate carrier (ECE), Seat heating- front, Emission standard EU6 AP, Without seat ventilation/massage seat, Luggage compartment lid- electrically opening and closing, Windshield with heat-reflecting glass and acoustic glass, Manual child safety lock, Convenience key- without Safelock, Interior mirror- automatically dimming- frameless, Airbags- front, front passenger airbag can be deactivated, Side airbags- front and head airbag system, Gloss package, Without special body measures, Carrier frequency 433.92 MHz- 434.42 Mhz, Rear spoiler, Rear seat bench plus with center armrest and cup holder, Adhesive film, Without front spoiler, Inlay- Micrometallic- Silver, Exterior mirrors on the right- (large field of view)- convex, Left exterior mirror- aspherical, Head restraints- front, Without fire extinguisher, Comfort center armrest- front, Exterior mirror housings in body color, Side decorative films, Adaptive cruise assist with emergency assist, Audi pre sense front for adaptive cruise control, Headlining in cloth in specific color, Exterior mirrors- electrically adjustable and heated, Speed limiter, Electronic immobilizer, Without socket, Without heat accumulator/auxiliary heater, Interior elements in Steel Gray, Tire pressure loss indicator, Start-stop system with recuperation, Door sill trims with plastic inlays, 4-way lumbar support for the front seats, Preparation for MMI navigation plus, Without extended safety system, Parking system plus, Side assist, Charging cable HH type K (DK), Charging cable with industrial connector CEE 16A / 230V / 6h- long and straight, Charging cable mode 3- type 2/3- 16 A, Installation of SLI battery in rear- without second battery, Without alternator, High beam assistant, LED headlights, Separate daytime running light, Light/rain sensor, Headlight range control, 6 loudspeakers, Adaptive cruise control, LED rear lights plus, Without front fog lamps, Washer fluid level indicator, Without headlamp washer system, Two-tone horn, Not hot country, 2-zone deluxe automatic air conditioning, Non-smoker version, Without auxiliary heater/parking heater, Audi virtual cockpit, Without logo projection, Without "Multimedia" in vehicle, Bluetooth interface, Operating voltage 12 V, Equipment options subset for Denmark

PICTURES



Picture viewer: <https://fm.bilsalg.dk/business/picturebrowser?t=full&guid=66f3af0c-df87-445a-83f7-e2e1dae1f49a&carid=20437246>

OVERVIEW OF DAMAGES AND SHORTAGES

N°	LOCATION	TYPE	SEVERITY	INSURANCE	NOTES	DAMAGE GROUP
1	R. Rear Door, List	Scratch	C4		Reporting needed	Group 1
						
2	R. Rear Quarter Panel	Scratch	C4		Reporting needed	Group 2
						
3	R. Front Door	Scratch	C4		Reporting needed	Group 1
						
4	R. Rear Door	Scratch	C4		Reporting needed	Group 1
						
5	Rear Bumper	Scratch	C3			
						
6	R. Rear Quarter Panel, List	Scratch	C3		Reporting needed	Group 2
						

Severity explanation:

C0 = No damage / C1 = Simple preparation / C2 = Minor preparation needed / C3 = Can be smart repaired / C4 = Repair/spray paint / C5 = Need replacement

ELECTRICAL AND MECHANICAL CONDITION

N°	LOCATION	TYPE	NOTES
1	Is the car drivable	Yes	