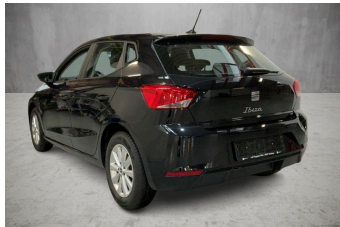


**VEHICLE DESCRIPTION - Seat Ibiza Style 1.0 MPI**



**First registration date:**  
5/2023

**VIN:**  
VSSZZKJ2PR106039

**Colour:**  
Black Metallic Normal gloss

**Mileage (km):**  
20.931

**Gear:**  
Manual (5 Gears)

**Fuel type:**  
Gasoline

**Body type:**  
Hatchback

**Number of doors:**  
5

**Drive type:**  
FWD

**Model year:**  
2021-2025

**Engine power:**  
59 kW

**Number of seats:**  
5

**Engine size (cc):**  
999

**Interior:**

**VEHICLE DETAILS**

**Number of keys:**  
2

**Number of license plates:**  
2

**Registration certificate:**  
Part 1 present

**Service documentation:**  
Yes

**Inspection date:**  
23-06-2026

**Last service (year/month):**  
2025/5


**Mileage (km) at last service:**  
14.533

**SUMMARY OF THE VEHICLE'S CONDITION**

**Is the car in a driveable condition:**  
Yes

**Legal tire tread (minimum 1.6 mm):**  
Yes

## WHEELS

 TYPE	SEASON	BRAND	POSITION	RIM	SIZE	TREAD
Fitted	Summer tires		Front Left	Alloy rim	15"	5 mm
Fitted	Summer tires		Rear Right	Alloy rim	15"	5 mm
Fitted	Summer tires		Rear Left	Alloy rim	15"	5 mm
Fitted	Summer tires		Front Right	Alloy rim	15"	5 mm

### Legal tire tread (minimum 1.6 mm):

Yes

## ACCESSORIES

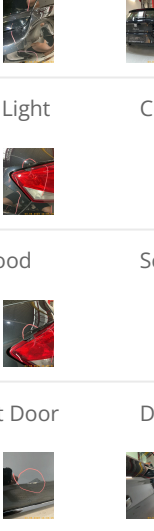
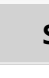


Rear overhang- short, Without special specifications, 4 doors, Front stabilizer bar, Wheelbase, Installation differentiation for transmission MQ 200 -- vehicle components --, Standard manufacturing sequence, Without alternative drive system, Standard rear axle, Nameplate set in basic style, Rear exhaust tailpipe (standard), Without floor mats, Without special color trim, Manual in Danish, Standard climatic zones, Weight range 4 installation control only- no requirement forecast, Fuel system for fuel-injected SI engine (tropicalized), Electronic stability control (ESC), Antifreeze up to -25 degree Celsius tolerance up to -30 degree C, Without trailer hitch, Activated carbon canister (Evaporative Emission Control System (EVAP)), Special identification label for EC for M1 passenger vehicles, Breakdown kit, Rear shock absorption, Drum brakes in rear, Standard air cleaner, Power steering, Trims for alloy wheels, Standard wheel bolts, Tool kit, Without additional front underbody guard, Without first aid kit and warning triangle, Vehicle class differentiation -6F0-, Front-wheel drive, Without differential lock, Initial standard fuel filling, Disc brakes in front (Geomet D), Without delivery equipment, Axial and vertical adjustable steering column, Leather-wrapped multi-function sports steering wheel, Without "drive select", Body-colored bumpers, Labels in Danish- Finish and Swedish, Standard design, Fresh air intake system with combination filter, Without additional tires, Type sign and company logo, Child seat anchors for child seat system ISOFIX, 3-point seat belt for center rear seat, Without roof insert (standard roof), Without luggage/load compartment floor, Without backrest release for front seats, Manual height adjustment for front seats, Door and side trim panel, Without mounting fixture in luggage compartment, Unsplit rear seat bench- split folding backrest, Three rear head restraints, 3-point seat belts in front- with belt clamping device- without height adjustment, Without roof rails/roof load rack, Luggage compartment cover- folding, Without additional noise suppression measures for passenger compartment, 3-point seat belts- outer rear with ECE label, Alloy wheels 5.5J x 15, Seat heater for front seats separately controlled, Protective side molding, Emission standard EU6 AP, Heat-reflecting windshield, Central locking w/ radio remote control- interior controls- without SAFELOCK, Side and rear windows in heat-insulating glass, Breakaway interior rearview mirror- auto-dimming, Standard dashboard, Rear floor panel module- type 1, Power windows with comfort operation and circuit breaker, Without luggage nets/pockets on backrests, Airbag on driver and front passenger side- without knee airbag- with front passenger airbag deactivation, Side airbag in front with curtain airbag, Standard decorative trims, Luggage compartment trim (design 1), Without special body measures, Carrier frequency 433.92 MHz-434.42 Mhz, Without rear spoiler, Without surface protection- with additional transport protection measures, Decorative inserts, Right exterior mirror- convex, Left exterior mirror- convex, Sun visors with mirror- airbag label on front passenger sun visor, Front head restraints, Without fire extinguisher, Without center armrest in front, Without additional side body covers (stone guard), Without decorative films/emblems, Exterior mirror housings and various add-on parts in body color, Lane keeping system, Forward collision warning incl. autonomous emergency braking- without adaptive cruise control, Vent, Unsplit molded headliner, Hand brake lever handle in leather, Gearshift knob/handle in leather, Without interior light in footwell, Exterior mirrors- power-folding/adjustment- heated, Without CD changer/CD player, Electronic immobilizer, Without heat accumulator/auxiliary heater, Freely programmable instrument cluster Basic, Tire pressure monitoring system, Start-stop system with regenerative braking, Without lumbar support in seat backrests, Without navigation device, Without CD/DVD for navigation, Without extended safety system, Without park distance control, Without lane change assist, Without second battery, Without light control, Alternator 140 A, LED headlamps, Separate daytime running light with automatic headlight control and manual Coming and Leaving Home feature, Rear window wiper and washer system with intermittent control, Windshield wiper intermittent control with light/rain sensor, Headlight range control, 6 speakers (passive), 2 reading lights in front, Rear combination lamp- standard design, Cruise control system and speed limiter, Rear fog lamp, Without washer fluid level indicator, Without front fog lamps, Without headlamp washer system, Single-tone horn, Not hot country, Antenna for AM/FM reception, Climatronic with impact pressure control- CFC-free, Non-smoker's package, Without auxiliary heater/parking heater, Visual and acoustic seat belt reminder- electric contact in front and rear, Without heated washer nozzles, MirrorLink, Mobile phone interface, In-plant control of self-collection, Luxury equipment, Driving on the right, Standard version, Type approval country Denmark, Part set without country-specific prescriptive standard, Operating permit- alteration, 3-cylinder gasoline engine 1.0 l/59 kW base engine: T5Y- "MPI", No special edition, Without ECO function, Online service- with OCU- without head unit coding- without engine immobilizer interconnection, Driver alert system, Regional code " ECE " for radio, No special purpose vehicle- standard equipment, Control of series production, Standard paint coating, Without customized installation, Variant, Shock absorption in front, 5-speed manual transmission "M5", Vehicles with special upgrade measures, Without applications, Entry-level infotainment system Radio 2 (MIB3) 8.25-inch, Battery 320 A (49 Ah), Tires 185/65 R15 88H super-low rolling resistance- generation 2, Hatchback, Without camera systems/accident sensors, Refrigerant R1234yf, Standard license plate lighting, Suspension range 03 installation control only- no requirement forecast, Left-hand drive, Seat trim covers in fabric, Pan-European emergency call service, FULL LINK- USB and WLAN only, Standard seats in front, LongLife Service Regime, Without voice control, Service indicator 30 000 km or 2 years ( variable ), Chrome package, With multifunction camera, Without drawers under front seats, Without add. lights (interior lighting), Without dynamic road sign display, Digital radio reception, Control (in-plant), 3-cylinder SI engine 1.0 l unit 05C.1, Instrument cluster- km/h speedometer, External-USB type C- only data socket(s), Hill start assist, Tires without specification of tire brand, Standard pedal cluster, Extended and proactive pedestrian and cyclist protection, Equipment options subset for Denmark

**PICTURES**



**Picture viewer:** <https://fm.bilsalg.dk/business/picturebrowser?t=full&guid=5cb3906e-d2b3-46ee-9558-e941a555456b&carid=20415228>

## OVERVIEW OF DAMAGES AND SHORTAGES

N°	LOCATION	TYPE	SEVERITY	INSURANCE	NOTES	DAMAGE GROUP
1	Rear Bumper	Dent	C5	Reporting needed		Group 1
2	R. Rear Light	Cracked	C5	Reporting needed		Group 1
3	Rear Hood	Scratch	C4	Reporting needed		Group 1
4	R. Front Door	Dent	C4	Reporting needed		

Severity explanation:

C0 = No damage / C1 = Simple preparation / C2 = Minor preparation needed / C3 = Can be smart repaired / C4 = Repair/spray paint / C5 = Need replacement

## ELECTRICAL AND MECHANICAL CONDITION

N°	LOCATION	TYPE	NOTES
1	Is the car drivable	Yes	