

VEHICLE DESCRIPTION - Audi Q5 S Line 2.0 50 TFSI e PHEV



First registration date:
5/2023

VIN:
WAUZZZFYP2108264

Colour:
null Metallic Normal gloss

Mileage (km):
133.331

Gear:
Automatic (7 Gears)

Fuel type:
Hybrid petrol

Body type:
SUV

Number of doors:
5

Drive type:
4WD

Model year:
2020-2025

Engine power:
220 kW

Number of seats:
5

Engine size (cc):
1984

Interior:
Grey Partial leatherette

VEHICLE DETAILS

Number of keys:
2

Number of license plates:
2

Registration certificate:
Part 1 & 2 present

Service documentation:
Yes

Inspection date:
29-05-2026

Last service (year/month):
2025/9

Mileage (km) at last service:
122.401

SUMMARY OF THE VEHICLE'S CONDITION

Is the car in a driveable condition:
Yes

Legal tire tread (minimum 1.6 mm):
Yes

WHEELS

 TYPE	SEASON	BRAND	POSITION	RIM	SIZE	TREAD
Fitted	Winter tires		Rear Left	Alloy rim	19"	7 mm
Fitted	Winter tires		Front Right	Alloy rim	19"	4 mm
Fitted	Winter tires		Front Left	Alloy rim	19"	4 mm
Fitted	Winter tires		Rear Right	Alloy rim	19"	7 mm
Extra Wheel	Summer tires		Rear Left	Alloy rim	19"	6 mm
Extra Wheel	Summer tires		Rear Right	Alloy rim	19"	6 mm
Extra Wheel	Summer tires		Front Left	Alloy rim	19"	4 mm
Extra Wheel	Summer tires		Front Right	Alloy rim	19"	4 mm

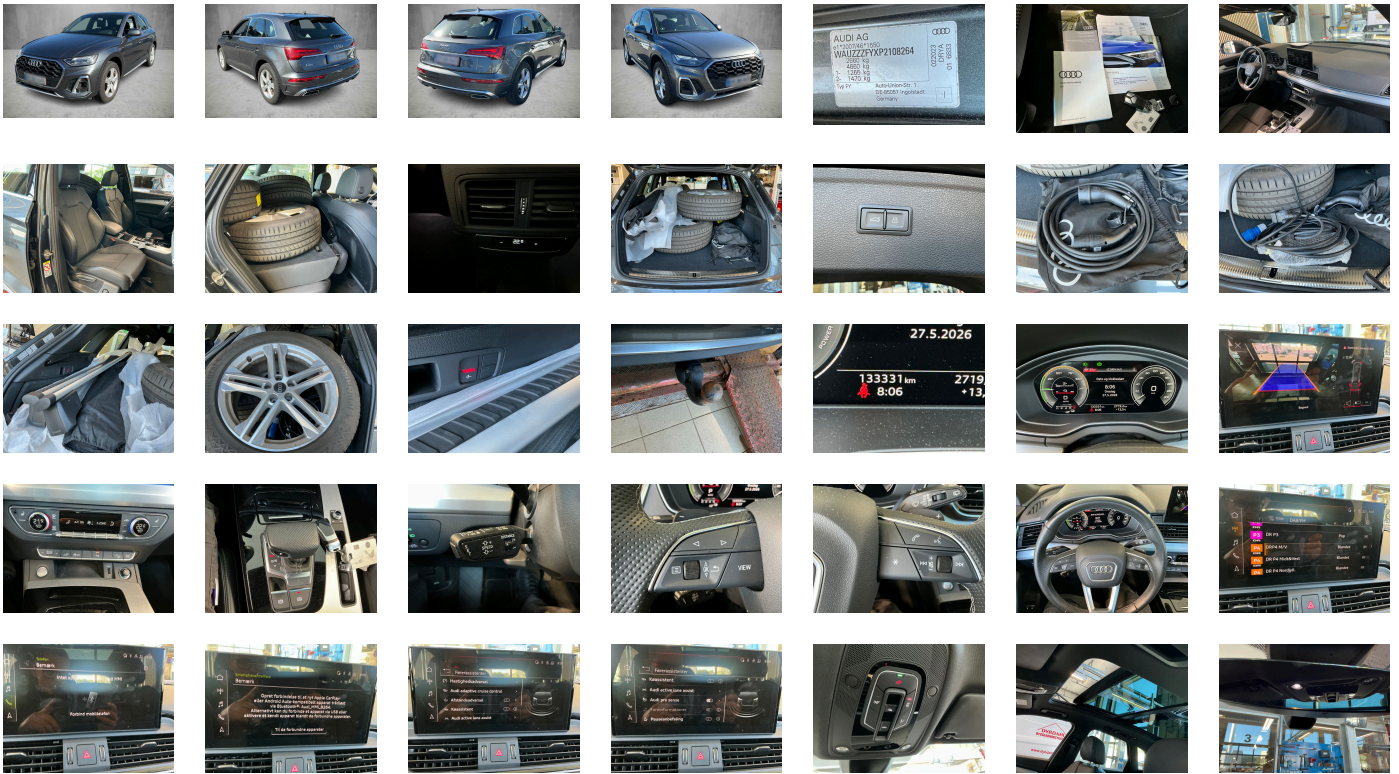
Legal tire tread (minimum 1.6 mm):

Yes

ACCESSORIES







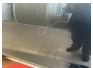


Trailer hitch aftermarket equipment- mechanically swiveling- manual, Standard-production quality, Driving on the right, No self-collection, Audi AG, Category 0, S line, Part set without country-specific prescriptive standard, Type approval country Denmark, Wheels- 5-twin-spoke star- S design- gloss turned finish- 8.0J x 19- 235/55 R19 tires, Operating permit- alteration, Regional code " ECE " for radio, Charging socket AC type 2, No special edition, Control of series production, Without AdBlue tank, Basic equipment variant, Preparation for functions on demand, Production wheels, Country group A, No special purpose vehicle- standard equipment, Auxiliary air conditioning, Without antenna amplifier, quattro with ultra technology, Acoustic vehicle alerting system, Vehicles with special upgrade measures, Accent surfaces- Gloss Black, Without Car2X, S tronic (for all-wheel drive), Tires 235/55 R19 101W, With connect package 6, Smartphone interface, Audi connect emergency call & service with Audi connect remote & control, SI engine, Data module- Europe, Battery 380 A (68 Ah), Reversing camera, Refrigerant R1234yf, Without head-up display, Box, Left-hand drive, 4-cyl. SI engine 2.0 l/195 kW- hybrid- turbo FSI- system output 220 kW base engine is T4H, Without wall mount, Transit coating (type 2), Sequence cloth/leather combination, Assist package including Audi pre sense plus for export markets, Without Storage package, Service indicator 30 000 km or 2 years (variable), With multifunction camera, Clear glass, Ambient Lighting package plus, Without dynamic road sign display, Without step, Digital Audio Broadcasting, Electromechanical power steering, Sport seats- front, Control of special edition prices, 4-cylinder SI engine 2.0 l unit 06N.E, Hold assist, Instrument cluster- km/h speedometer, Without garage door opener, Standard pedal cluster, Standard electric, Extended pedestrian protection, Door sill trims with aluminum inlays- front-illuminated- S logo, Without danger alarm system, Tires without specification of tire brand, Equipment package for Denmark, Equipment package for Germany, Equipment package for Denmark, Interior S line, Internal control code, Internal control code, Internal control code, Standard, Standard manufacturing sequence, tiptronic, Weight category front axle weight range 7, Hybrid propulsion system PHEV, With special labels safety certificates for Denmark, Fuel tank, Without ignition/starter switch locking system- without steering lock, Floor mats- front and rear, Manual in Danish, Weight range 11 installation control only- no requirement forecast, Standard climatic zones, Basic, Fuel system for SI engine with direct injection (FSI), Standard suspension, Special identification label (EU), Tire repair kit, Disc brakes in rear- 17-inch (ECE), Wheel bolts- anti-theft, Standard suspension, Without additional front underbody guard, Vehicle tool kit (without vehicle jack), First-aid kit with warning triangle and high-visibility vests, Installation parts for four-cylinder engine, Leather steering wheel- 3-spoke with multifunction plus, quattro, Disk brakes- front- 17-inch (ECE), Increase in initial standard fuel filling, Axial and vertical adjustable steering column, Audi connect key, Insert for the filling up of unleaded fuel, Audi drive select, Labels in English and German, Reinforced bumpers, Loading sill protector- stainless steel, Without additional tires, Model name as per new output designation, Electric motor (hybrid electric vehicle)- total system output 220 kW- unit 0ED.D, ISOFIX child seat mounting and top tether for the outer rear seats, Partition net, Panoramic glass roof, Loading floor, Without child seat anchora in front (ISOFIX), Front seats- manually adjustable, Passenger car design, Rear seat bench plus, Aluminum roof rails with roof rack detection system, Luggage compartment cover, Without roll-up sunshade, Seat heating- front, Emission standard EU6 AP, Without seat ventilation/massage seat, Luggage compartment lid- electrically opening and closing, Windshield with heat-reflecting glass and acoustic glass, Manual child safety lock, Convenience key- without Safelock, Rear and side windows with heat-insulating glazing, Interior mirror- automatically dimming- frameless, Beverage holders, Airbags- front, front passenger airbag can be deactivated, Side airbags- front and head airbag system, Gloss package, Without special body measures, Carrier frequency 433.92 MHz-434.42 Mhz, Roof spoiler, Adhesive film, Left exterior mirror- aspherical, Without fire extinguisher, Inlays- Matt Brushed Aluminum, Sun visors- front, Head restraints- front, Comfort center armrest- front, Exterior mirror housings in body color, Emblems, Audi active lane assist, Audi pre sense city, Headlining in cloth- Black, Luggage compartment mat, Right exterior mirror- aspherical, Rear trim panel (ECE), Without front license plate carrier, Exterior mirrors- electrically adjustable- heated and folding- automatically dimming on both sides, Electronic immobilizer, Without heat accumulator/auxiliary heater, Gearshift/selector lever handle, Without preparation for VTS (vehicle tracking system), Without leather, Vehicle class differentiation -FY0/FYF-, Tire pressure loss indicator, Recuperation, 4-way lumbar support for the front seats, Preparation for navigation system High for function-on-demand feature, Without extended safety system, Parking system plus, Without lane change assist, e-tron charging system compact (AC) with domestic connector type K (Denmark), Industrial connector CEE 16A- 230V- long and straight- for the e-tron charging system, Charging cable for public charging- mode 3- 11 kW (AC), Without alternator, High beam assistant, LED headlights, Separate daytime running light, 8 loudspeakers, Audi adaptive cruise control, LED rear lights, Without headlamp washer system, Two-tone horn, Not hot country, 3-zone deluxe automatic air conditioning, Without integrated toll system, Non-smoker version, Without auxiliary heater/parking heater, Seat belt reminder, Audi virtual cockpit, Without additional warning lights, Audi phone box light, Equipment options subset for Denmark

PICTURES



Picture viewer: <https://fm.bilsalg.dk/business/picturebrowser?t=full&guid=012fb38b-4280-484c-b782-7b758a61971b&carid=20415214>

OVERVIEW OF DAMAGES AND SHORTAGES

N°	LOCATION	TYPE	SEVERITY	INSURANCE	NOTES	DAMAGE GROUP
1	Front Bumper, Grill	Cracked	C5		Reporting needed	
						
2	R. Rear Door	Dent	C3			
						
3	L. Front door	Dent	C3			
						
4	Rear Bumper	Scratch	C3			
						

Severity explanation:
C0 = No damage / C1 = Simple preparation / C2 = Minor preparation needed / C3 = Can be smart repaired / C4 = Repair/spray paint / C5 = Need replacement

ELECTRICAL AND MECHANICAL CONDITION

N°	LOCATION	TYPE	NOTES
1	Is the car drivable	Yes	