

VEHICLE DESCRIPTION - Škoda Kodiaq Sportline 2.0 TDI



First registration date: 5/2023	VIN: TMBJJ7NS2P8525318
Colour: Gray Metallic Normal gloss	Mileage (km): 153.894
Gear: Automatic (7 Gears)	Fuel type: Diesel
Body type: SUV	Number of doors: 5
Drive type: FWD	Model year: 2021-2024
Engine power: 110 kW	Number of seats: 5
Engine size (cc): 1968	Interior:

VEHICLE DETAILS

Number of keys: 2	Number of license plates: 2	Registration certificate: Part 1 present	Service documentation: Yes
Inspection date: 01-06-2026	Last service (year/month): 2026/4	Mileage (km) at last service: 151.237	

SUMMARY OF THE VEHICLE'S CONDITION

Is the car in a driveable condition: Yes	Legal tire tread (minimum 1.6 mm): Yes
--	--

WHEELS

 TYPE	SEASON	BRAND	POSITION	RIM	SIZE	TREAD
Fitted	Winter tires		Front Left	Alloy rim	17"	2 mm
Fitted	Winter tires		Front Right	Alloy rim	17"	2 mm
Fitted	Winter tires		Rear Left	Alloy rim	17"	2 mm
Fitted	Winter tires		Rear Right	Alloy rim	17"	2 mm
Extra Wheel	Summer tires		Front Left	Alloy rim	19"	4 mm
Extra Wheel	Summer tires		Front Right	Alloy rim	19"	4 mm
Extra Wheel	Summer tires		Rear Left	Alloy rim	19"	4 mm
Extra Wheel	Summer tires		Rear Right	Alloy rim	19"	4 mm

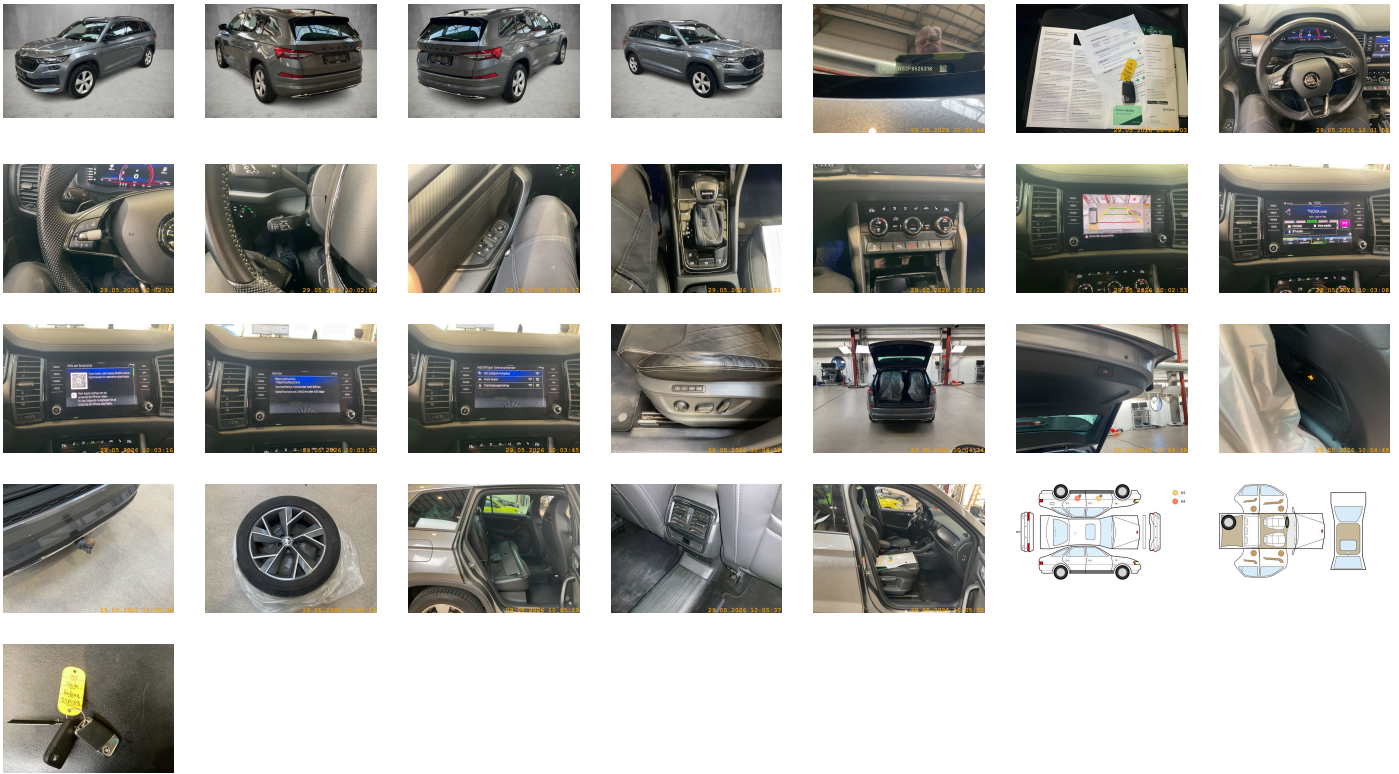
Legal tire tread (minimum 1.6 mm):

Yes

ACCESSORIES





Driving on the right, Equipment 1, Part set without country-specific prescriptive standard, Type approval country Denmark, Operating permit- alteration, 4-cyl. turbo diesel 2.0l/110kW(4V) TDI CR, b.eng. T37/T3Y/TS1/T4P/T98/T4S/TR1 T0N/T13/T29/TD1/T19/T3C/T1N/T27/T1Q/T5M, ECO function, Remote Access / Remote Access + Online Infotainment, Driver alert system, Regional code " ECE " for radio, Sports package, Standard paint coating, Control of series production (deviating in-plant control), Variant, No special purpose vehicle- standard equipment, Without electronic engine sound measures, Shock absorption in front, 7-speed automatic transmission, Tires 235/50 R19 99V, Without bracket, Curb weight range 1, Rear axle weight- type 1, Battery 420 A (70 Ah), With rear view camera system (type 2), Climatronic (3-zone) with air conditioning control panel in rear, Refrigerant R1234yf, Without head-up display, Hatchback, Left-hand drive, Suspension range 05 installation control only- no requirement forecast, Without adapter, Standard battery/alternator capacity, Emergency call system eCall+, Seat trim covers in Suedia, Variable boot floor, LongLife Service Regime, Voice control, Service indicator 30 000 km or 2 years (variable), Without aluminum/chrome package, With multifunction camera, Drawer under right front seat, Interior ambient lighting- type 1, Without dynamic road sign display, DAB - Digital radio reception, Sports comfort seats in front, USB front + rear- 230 V socket, 4-cylinder diesel engine 2.0 l unit 05L.D, Hill start assist, Parking brake, Mechanical rear seat release, Instrument cluster- km/h speedometer, USB front + rear, Pedal cluster, Extended and proactive pedestrian protection, Tires without specification of tire brand, Remote Access 1 year, Front stabilizer bar, Rear stabilizer bar, Wheelbase, Standard manufacturing sequence, Fuel system for diesel engine, Installation differentiation for transmission DQ381 -- vehicle components --, Without decals and emblems, Without alternative drive system, Vehicle class differentiation -55A-, Nameplate set, With electronic steering column lock, Floor mats in front and rear, Manual in Danish, Weight range 12 installation control only- no requirement forecast, Standard climatic zones, Electronic stability control (ESC), Special identification label for EC for M1 passenger vehicles, Without activated carbon canister with SCR, Breakdown kit, Rear shock absorption- basic version 1, Disc brakes in front, Trailer hitch mechanically swiveling and power-detachable, Trims for alloy wheels, Dynamic steering, Standard wheel bolts, Without additional front underbody guard, Tool kit, Without folding table on front seat backrest, Front-wheel drive, Initial standard fuel filling, Without delivery equipment, Additional exterior noise suppression, Disc brakes in rear, Without locking and starting systems, Driving profile selection and conventional shock absorber, Sports bumpers, Without additional tires, Fuel filler cap, Leather-wrapped multi-function steering wheel- heated- with tiptronic, Child seat anchors for child seat system ISOFIX, Net partition, 3-point seat belt for center rear seat, Without roof insert (standard roof), Raised luggage/load compartment floor in rear, Without child seat anchor in front (ISOFIX), Without backrest release for front seats, Door and side trim panel, Storage compartments with cover in trunkside panel, Power seat adjustment with memory feature for left seat- right seat manually height-adjustable, 3-point seat belts in front- with tensioner and height adjustment, Black roof rails, Three rear head restraints, Luggage compartment cover- sliding, Special interior noise suppression, Without load-through hatch, Without roll-up sunshade, 3-point seat belts- outer rear with ECE label, Without trash bin, Seat heater for front seats separately controlled, Emission standard EU6 AP, Without protective side molding, Without seat ventilation/massage seat, Tailgate/trunk lid power closing, Heat-reflecting windshield, Manual child safety lock, Central locking system Keyless Entry without SAFELOCK, "SUNSET", Breakaway interior rearview mirror- auto-dimming, Driver knee airbag, Luggage pockets on backrest, Side airbag in front with curtain airbag, Black decorative trims, Alloy wheels 7J x 19 "TRIGLAV" Anthracite, Without special body measures, Carrier frequency 433.92 MHz-434.42 Mhz, Roof spoiler, Rear seat bench/backrest- split folding, Transport protection film with additional transport protection measures, Decorative inserts- carbon, Right exterior mirror- convex, Left exterior mirror- convex, Sun visors with mirror- illuminated, Front head restraints, Without fire extinguisher, Center armrest in front, Components with special surface appearance, Without lane keeping system, Forward collision warning incl. autonomous emergency braking- for adaptive cruise control "high", Without tie down straps/net/pocket, Unsplit molded headliner, Without mud flap, Gearshift knob/handle in leather, Luggage compartment floor covering in needle-punched nonwoven, 12-volt socket(s), Interior light in footwell in front and rear, Ext. mirrors with memory feature- auto- dimming on driver's side- el.folding/ adjustable- separately heated, Electronic immobilizer, Electric auxiliary air heater, Tire pressure monitoring system, Start-stop system with regenerative braking, Scuff plates in door apertures, Overhead storage compartment, Power-adjustable lumbar support for left front seat, Radio Bolero, Without extended safety system, Park distance control in front and rear, Without lane change assist, Optional infotainment system (MIB3), Without second battery, Alternator 140 A, Matrix beam, LED headlamps with variable light distribution, Separate daytime running light with automatic headlight control and manual Coming and Leaving Home feature, Windshield wiper intermittent control with light/rain sensor, Key for locking system with remote control, Dynamic headlight range control- with cornering light (AFS 1), 8 speakers (passive), 2 reading lights in front, Rear fog lamp, Adaptive cruise control (with "follow-to-stop") and speed limiter, LED rear combination lamp- variable lighting functions- special styling, Poor weather light- cornering light and highway light, Washer fluid level indicator, Headlamp washer system, Two-tone horn, Antenna for FM reception only- diversity, Not hot country, Luggage compartment lamp, Without additional malfunction display, Comfort telephony with LTE and wireless charging, Non-smoker's package, Without auxiliary heater/parking heater, Visual and acoustic seat belt reminder- electric contact, Virtual Cockpit, Additional retro-reflectors (door area), Heated washer nozzles in front, "SMART LINK" (wireless for Apple), 230-V inverter and outlet for Europe, Equipment options subset for Denmark

PICTURES



Picture viewer: <https://fm.bilsalg.dk/business/picturebrowser?t=full&guid=ed2faee7-4ecd-407f-859f-c2d1381b326e&carid=20381875>

OVERVIEW OF DAMAGES AND SHORTAGES

N°	LOCATION	TYPE	SEVERITY	INSURANCE	NOTES	DAMAGE GROUP
1		Mangler			Indlevering nøgle	
2	L. Rear Door	Scratch	C4		Reporting needed	
						
3	L. Front door	Scratch	C3			
						

Severity explanation:

C0 = No damage / C1 = Simple preparation / C2 = Minor preparation needed / C3 = Can be smart repaired / C4 = Repair/spray paint / C5 = Need replacement

ELECTRICAL AND MECHANICAL CONDITION

N°	LOCATION	TYPE	NOTES
1	Is the car drivable	Yes	
2	Warning Indicators, Service	Lights	