

VEHICLE DESCRIPTION - Audi A1 Advanced 1.0 30 TFSI



First registration date:
5/2023

VIN:
WAUZZZGB8PR052200

Colour:
White Normal gloss

Mileage (km):
41.604

Gear:
Automatic (7 Gears)

Fuel type:
Gasoline

Body type:
Hatchback

Number of doors:
5

Drive type:
FWD

Model year:
2018

Engine power:
81 kW

Number of seats:
5

Engine size (cc):
999

Interior:
Grey Fabric

VEHICLE DETAILS

Number of keys:
2

Number of license plates:
2

Registration certificate:
Part 1 & 2 present

Service documentation:
Yes

Inspection date:
18-05-2026

Last service (year/month):
2025/1


Mileage (km) at last service:
23.324

SUMMARY OF THE VEHICLE'S CONDITION

Is the car in a driveable condition:
Yes

Legal tire tread (minimum 1.6 mm):
Yes



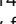
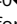
WHEELS

 TYPE	SEASON	BRAND	POSITION	RIM	SIZE	TREAD
Fitted	Summer tires		Front Left	Alloy rim	16"	5 mm
Fitted	Summer tires		Rear Right	Alloy rim	16"	5 mm
Fitted	Summer tires		Rear Left	Alloy rim	16"	5 mm
Fitted	Summer tires		Front Right	Alloy rim	16"	5 mm

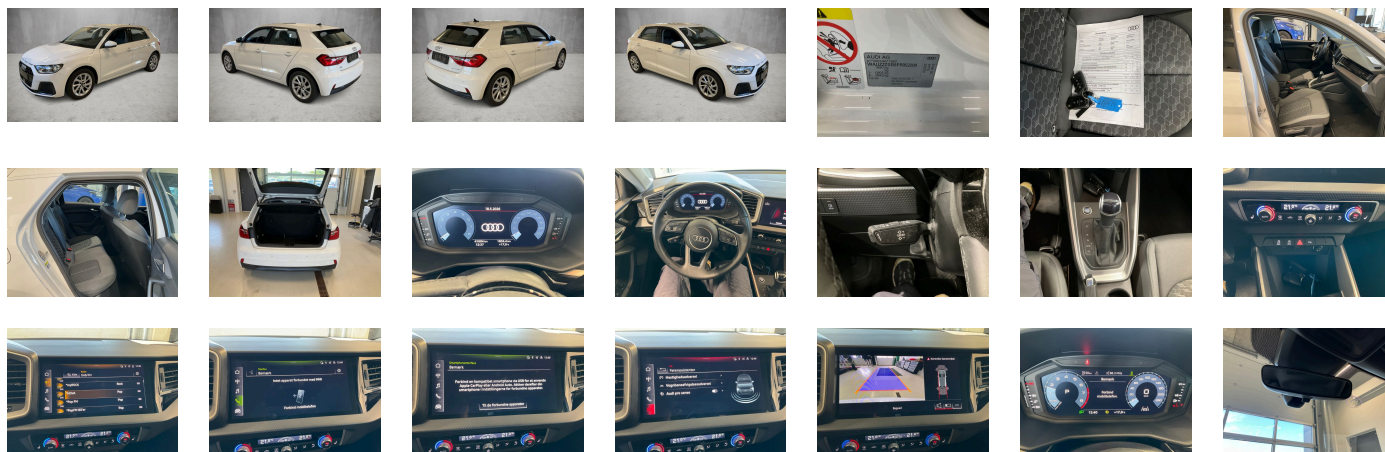
Legal tire tread (minimum 1.6 mm):

Yes

ACCESSORIES

Standard-production quality, Driving on the right, Version (high), Audi AG, Category 0, advanced, Part set without country-specific prescriptive standard, Type approval country Denmark, Wheels- 10-spoke turbine- 6.5J x 16- 195/55 R16 tires, Operating permit- alteration, 3-cylinder SI engine 1.0 l/81 kW TSI base engine is Tj4/TC5, Without ECO function, Audi connect remote & control (for MMI radio plus), Regional code " ECE " for radio, No special edition, Control of series production, Basic equipment variant, Production wheels, Country group A, No special purpose vehicle- standard equipment, Without antenna amplifier, Accent surfaces- Gloss Black, Shock absorption in front, S tronic, Without Audi connect navigation & infotainment, SI engine, Tires 195/55 R16 91V xl, Top infotainment system Basic (MIB3), Battery 380 A (59 Ah) EFB+, Reversing camera, Refrigerant R1234yf, Sportsback, Left-hand drive, Suspension range 02 installation control only- no requirement forecast, Statutory emergency call, Novum cloth, Sport seats- front, Without Storage package, LongLife Service Regime, Speech dialog system, Service indicator 30 000   km or 2 years (variable), Without aluminum look in the interior, With multifunction camera for NCAP requirements, Interior lighting, Without dynamic road sign display, Digital Audio Broadcasting, Electromechanical power steering, Sport seats- front, 3-cylinder SI engine 1.0 l unit 05CA, Hill hold assist, Smartphone interface, Instrument cluster- km/h speedometer, Standard pedal cluster, Extended and proactive pedestrian and cyclist protection, Tires without specification of tire brand, Equipment package for Denmark, Equipment package for Denmark, Internal control code, Front stabilizer bar, 5 doors, Wheelbase, Standard, Installation differentiation for transmission DQ200 -- vehicle components --, SEAT manufacturing sequence, Without alternative drive system, With special labels safety certificates for Denmark, Standard rear axle, Floor mats- front, Accent surfaces- diamond paint finish- Silver Gray, Manual in Danish, Weight range 8 installation control only- no requirement forecast, Standard climatic zones, Rear overhang- short, Electronic Stabilization Control ESC, Fuel system for fuel-injected SI engine (tropicalized), Without trailer hitch, Special identification label (EU), Activated carbon canister (Evaporative Emission Control System (EVAP)), Tire repair kit, Seat occupancy sensor, Standard suspension, Disk brakes- rear- 14-inch, Standard air cleaner, Standard wheel bolts, Without additional front underbody guard, Vehicle tool kit, Vehicle class differentiation -GB0/GBS-, First-aid kit with warning triangle, Without refrigerator/glove compartment cooling system, Leather steering wheel- 3-spoke with multifunction plus, Front-wheel drive, Electronic differential lock XDS- dynamic traction support, Disk brakes- front- 15-inch, Initial standard fuel filling, Safety steering column, Without "drive select", Bumpers- advanced, Labels in English and German, Standard design, Without additional tires, Model name as per new output designation, i-Size child seat mounting on the front passenger side and i-Size and top tether on the outer rear seats, Without roof insert (standard roof), Without luggage/load compartment floor, Without child seat anchora in front (ISOFIX), Without backrest release for front seats, Front passenger seat- height-adjustable, Rear seat backrest- folding, 3-point seat belts in front- with tensioner and height adjustment, Head restraints- rear, 3-point seat belts on outer rear seats with ECE labels with pretensioners for EU28, License plate carrier in front and rear (ECE), Seat heating- front, Emission standard EU6 AP, Windshield with heat-insulating glass, Convenience key- without Safelock, Rear and side windows with heat-insulating glazing, Interior mirror- dimming, Rear floor panel module- type 1, Window controls, Airbags- front, front passenger airbag can be deactivated, Side airbags- front and head airbag system, Trim strips- Black, Carrier frequency 433.92 MHz-434.42 Mhz, Standard rear spoiler, Decals ROW, Inlays- Polygon Structure- fine paint finish- Slate Gray, Exterior mirrors on the right- (large field of view)- convex, Left exterior mirror- aspherical, Head restraints- front, Without fire extinguisher, Comfort center armrest- front, Exterior mirror housings in body color, Without decorative films/emoles, Roof dome in body color, Lane departure warning, Audi pre sense front, Headlining in cloth in specific color, Hand brake lever handle in leather, Exterior mirrors- electrically adjustable- heated and folding, Electronic immobilizer, Without heat accumulator/auxiliary heater, Gearshift/selector lever handle, Without leather, Tire pressure loss indicator, Start-stop system with recuperation, Door sill trims with aluminum inlays- front, Manually adjustable lumbar support in front seats, Without navigation device, Without extended safety system, Parking system plus, Without lane change assist, Without second battery, Alternator 140   A, Without light control, Headlamps, Separate daytime running light, Rear window wiper and washer system with intermittent control, Light/rain sensor, Key for locking system, Headlight range control, 6 loudspeakers, Rear fog lamps, Cruise control, Rear lights, Without front fog lamps, Washer fluid level indicator, Without headlamp washer system, Not hot country, 2-zone deluxe automatic air conditioning, Non-smoker version, Without auxiliary heater/parking heater, Digital instrument cluster, Bluetooth interface, Equipment options subset for Denmark

PICTURES



Picture viewer: <https://fm.bilsalg.dk/business/picturebrowser?t=full&guid=e9ac625d-23e5-469d-9f6d-8da60d033f93&carid=20372126>

OVERVIEW OF DAMAGES AND SHORTAGES

N°	LOCATION	TYPE	SEVERITY	INSURANCE	NOTES	DAMAGE GROUP
1	Front Windscreen	Stone Chips	C5		Reporting needed	



Severity explanation:

C0 = No damage / C1 = Simple preparation / C2 = Minor preparation needed / C3 = Can be smart repaired / C4 = Repair/spray paint / C5 = Need replacement

ELECTRICAL AND MECHANICAL CONDITION

N°	LOCATION	TYPE	NOTES
1	Is the car drivable	Yes	