

VEHICLE DESCRIPTION - Škoda Fabia Ambition 1.0 TSI



First registration date:
4/2023

VIN:
TMBER9PJ9P4062773

Colour:
Gray Metallic Normal gloss

Mileage (km):
69.729

Gear:
Automatic (7 Gears)

Fuel type:
Gasoline

Body type:
Hatchback

Number of doors:
5

Drive type:
FWD

Model year:
2021

Engine power:
81 kW

Number of seats:
5

Engine size (cc):
999

Interior:

VEHICLE DETAILS

Number of keys:
2

Number of license plates:
2

Registration certificate:
Part 1 & 2 present

Service documentation:
Yes

Inspection date:
03-06-2026

Last service (year/month):
2024/8

Mileage (km) at last service:
31.747

SUMMARY OF THE VEHICLE'S CONDITION

Is the car in a driveable condition:
Yes

Legal tire tread (minimum 1.6 mm):
Yes

WHEELS

TYPE	SEASON	BRAND	POSITION	RIM	SIZE	TREAD
Fitted	Summer tires		Front Left	Alloy rim	15"	5 mm
Fitted	Summer tires		Rear Right	Alloy rim	15"	5 mm
Fitted	Summer tires		Rear Left	Alloy rim	15"	5 mm
Fitted	Summer tires		Front Right	Alloy rim	15"	5 mm

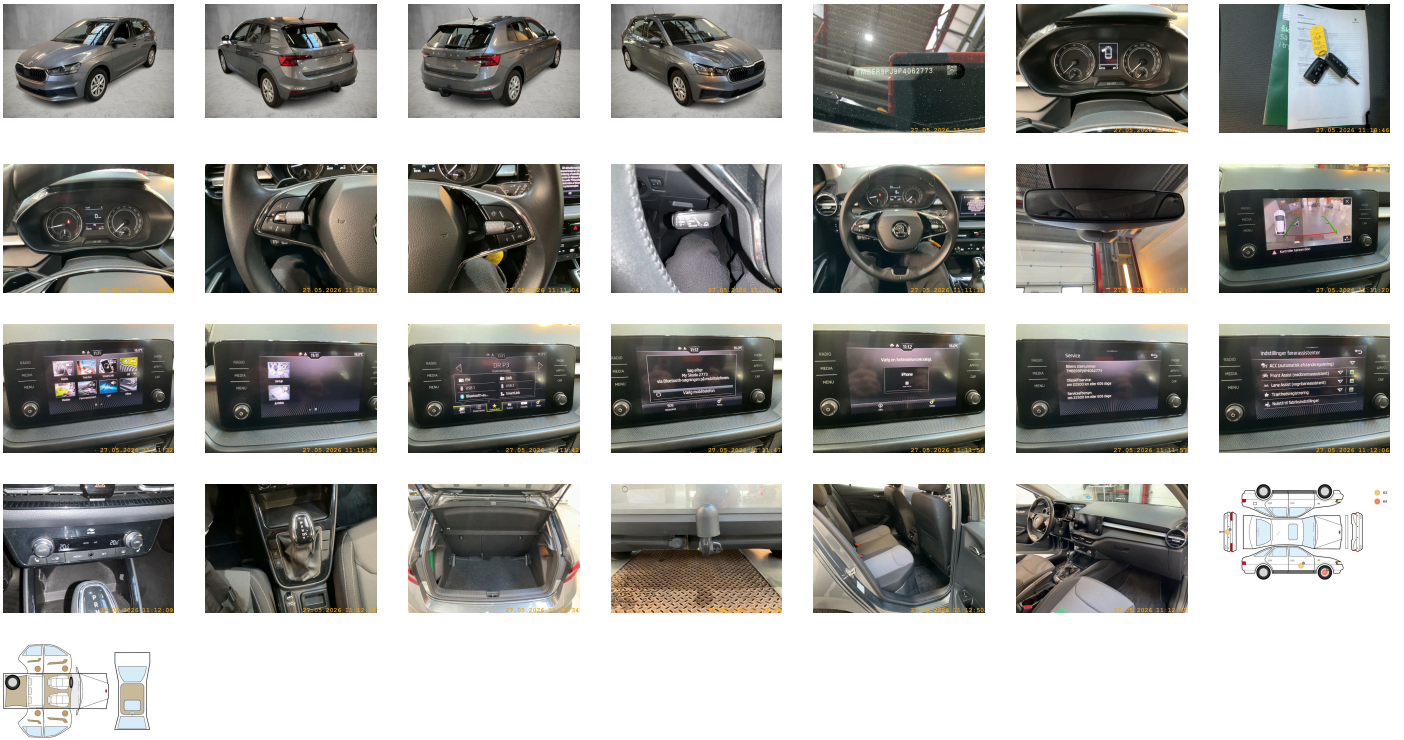
Legal tire tread (minimum 1.6 mm):

Yes

ACCESSORIES




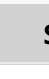
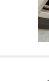


Without headlamp washer system, Single-tone horn, Antenna for FM reception only, Not hot country, Climatronic with impact pressure control- CFC-free, Luggage compartment lighting, Without additional malfunction display, Non-smoker's package, Without auxiliary heater/parking heater, Seatbelt warning - front + rear seats, "MAXI DOT" (KI Mid), Heated washer nozzles in front, "SMART LINK", Bluetooth, Equipment options subset for Denmark, Driving on the right, "Standard Plus" version, Comfort equipment, Part set without country-specific prescriptive standard, Type approval country Denmark, Operating permit- alteration, 3-cylinder SI engine 1.0 l/81 kW TSI base engine is TJ4/TC5, Without ECO function, Remote Access / Pro-active service, DRIVER ALERT SYSTEM, Regional code " ECE " for radio, No special edition, Standard paint coating, CO2 variant, No special purpose vehicle- standard equipment, Shock absorption in front, 7-speed automatic transmission, Without bracket, Curb weight range 1, Rear axle weight- type 1, Radio Bolero 8", Battery 380 A (59 Ah) EFB+, Tires 185/65 R15 88H super-low rolling resistance- generation 2, Rear view camera - with washer nozzle, Refrigerant R1234yf, without USB in interior rear view mirror, Hatchback, Left-hand drive, Suspension range 05 installation control only- no requirement forecast, Without adapter, With umbrella, E-Call+, Seat trim covers in fabric, FRONT ASSIST with ACC, Without storage compartment package/box, LongLife Service Regime, Without voice control, Service indicator 30 000 km or 2 years (variable), Chrome package, With multifunction camera, Without drawers under front seats, Without add. lights (interior lighting), Without dynamic road sign display, DAB - Digital radio reception, Standard seats in front, Lower decorative inserts, Control of logistics 2, 3-cylinder SI engine 1.0 l unit 05C.A, Hill start assist, Instrument cluster- km/h speedometer, 2x USB front (typ C data), Standard pedal cluster, Extended and proactive pedestrian and cyclist protection, Tires without specification of tire brand, Remote Access 1 year, WLTP Blocking, Front stabilizer bar, 4 doors, Wheelbase, Installation differentiation for transmission DQ200 -- vehicle components --, Standard manufacturing sequence, Fuel tank, Without alternative drive system, Nameplate set in basic style, Standard rear axle, Weight range 8 installation control only- no requirement forecast, Rear exhaust tailpipe (standard), Without floor mats, Manual in Danish, Standard climatic zones, Rear overhang- short, Electronic stability control (ESC), Fuel system for fuel-injected SI engine (tropicalized), Antifreeze up to -25 degree Celsius tolerance up to -30 degree C, Tow bar (removable), Special identification label for EC for M1 passenger vehicles, Activated carbon canister (Evaporative Emission Control System (EVAP)), Breakdown kit, Rear shock absorption, Disk brakes rear, Trims for alloy wheels, Power steering, Wheel bolts with anti-theft protection (unlockable), Additional front underbody guard, Without tool kit and jack, Front-wheel drive, Disc brakes in front (Geomet D), Initial standard fuel filling, Without delivery equipment, Axial and vertical adjustable steering column, Vehicle class differentiation -6VN-, Leather-wrapped multi-function steering wheel with tiptronic, Without "drive select", Body-colored bumpers, Standard bumpers, Fresh air intake system with combinationfilter, Fuel filler cap, Child seat anchors f. child seat system i-Size- 2x top tether and child seat anchors in front on front passenger side, Without partition, Central console - cuholder "Snowman", Without roof insert (standard roof), Without luggage/load compartment floor, Without backrest release for front seats, Door and side trim panel, Height - adjustable driver and co-driver seat, Rear seat backrest split 60:40- unsplit rear seat bench, Without storage compartments in trunk, 3-point seat belts in front- with pretensioner/lap belt pretensioner and height adjustment, 3rd head restrain rest, Preparation for roof load rack, Luggage compartment cover- folding, Acoustics package "Standard", 3-point seat belts- outer rear with ECE label, Without storage compartment, Seat heater for front seats separately controlled, Emission standard EU6 AP, Heat-reflecting windshield, Central locking w/ radio remote control-interior controls- without SAFELOCK, Side and rear windows in heat-insulatingglass, Breakaway interior rearview mirror- auto-dimming, Rear floor panel module- type 1, Front and rear windows electric (auto up/down function for all windows), Airbag on driver and front passenger side- knee airbag on driver side- with front passenger airbag deactivation, Side airbag in front and rear with curtain airbag, Standard decorative trims, Standard glove compartment, Alloy wheels "ROTARE" silver 5-5J x 15" - 4 pcs, Carrier frequency 433.92 MHz-434.42 Mhz, Exterior mirrors: convex on driver side- convex on front passenger side, Rear spoiler, Transport protection film with additional transport protection measures, Decorative inserts, Folding grab handles at roof frame, Sun visors with mirror- airbag label on front passenger sun visor, Front head restraints, Without fire extinguisher, Without additional side body covers (stone guard), Center armrest in front, Outside door mirrors and door handles inbody color, Without decorative films/emblems, Lane Assist, Radiator grille, Forward collision warning incl. autonomous emergency braking- for adaptive cruise control "high", Vent, Without tie down straps/net/pocket, Hand brake lever handle in leather, Gearshift knob/handle in leather, Without luggage compartment floor covering, Without additional seals outside, Exterior mirrors- electr. adjustable- heated - painted in exterior colour (forMC colored black), Electronic immobilizer, Without socket, Without heat accumulator/auxiliary heater, Tire pressure monitoring system, Start-stop system with regenerative braking, Without protective film for scuff plate, Spectacle storage compartment/bracket, Without lumbar support in seat backrests, Without navigation device, Without extended safety system, Parking sensors rear, Without lane change assist, Without second battery, Alternator 140 A, Without light control, LED headlamps, Separate daytime running light with automatic headlight control and manual Coming and Leaving Home feature, Rear window wiper and washer system with intermittent control, Windshield wiper intermittent control with light sensor, Key for locking system with remote control, Headlight range control, 4 speakers front + 2 rear incl. "koda Surround, Two reading lights in front- two in rear, Rear fog lamp for driving on the right, Adaptive cruise control (with "follow-to-stop") and speed limiter, Rear combination lamp, Without front fog lamps, Washer fluid level indicator

PICTURES



Picture viewer: <https://fm.bilsalg.dk/business/picturebrowser?t=full&guid=83f7577d-edd1-45ff-ad8a-bd9256acbfde&carid=20356126>

OVERVIEW OF DAMAGES AND SHORTAGES

N°	LOCATION	TYPE	SEVERITY	INSURANCE	NOTES	DAMAGE GROUP
1	R. Front Rim	Scratch	C4		Reporting done	
						
2	Rear Bumper	Scratch	C3			
						
3	R. Front Door	Scratch	C3			
						

Severity explanation:

C0 = No damage / C1 = Simple preparation / C2 = Minor preparation needed / C3 = Can be smart repaired / C4 = Repair/spray paint / C5 = Need replacement

ELECTRICAL AND MECHANICAL CONDITION

N°	LOCATION	TYPE	NOTES
1	Is the car drivable	Yes	