

VEHICLE DESCRIPTION - VW Taigo Style Plus 1.0 TSI



First registration date:
4/2023

VIN:
WVGZZZCSZPY063136

Colour:
Charcoal gray Metallic Normal gloss

Mileage (km):
29.200

Gear:
Automatic (7 Gears)

Fuel type:
Gasoline

Body type:
SUV

Number of doors:
5

Drive type:
FWD

Model year:
2021

Engine power:
81 kW

Number of seats:
5

Engine size (cc):
999

Interior:
Black Partial leatherette

VEHICLE DETAILS

Number of keys:
2

Number of license plates:
2

Registration certificate:
Part 1 & 2 present

Service documentation:
Yes

Inspection date:
15-05-2026

Last service (year/month):
2025/12

Mileage (km) at last service:
27.000

SUMMARY OF THE VEHICLE'S CONDITION

Is the car in a driveable condition:
Yes

Legal tire tread (minimum 1.6 mm):
Yes

WHEELS

 TYPE	SEASON	BRAND	POSITION	RIM	SIZE	TREAD
Fitted	Summer tires		Front Left	Alloy rim	17"	5 mm
Fitted	Summer tires		Rear Right	Alloy rim	17"	7 mm
Fitted	Summer tires		Rear Left	Alloy rim	17"	7 mm
Fitted	Summer tires		Front Right	Alloy rim	17"	5 mm

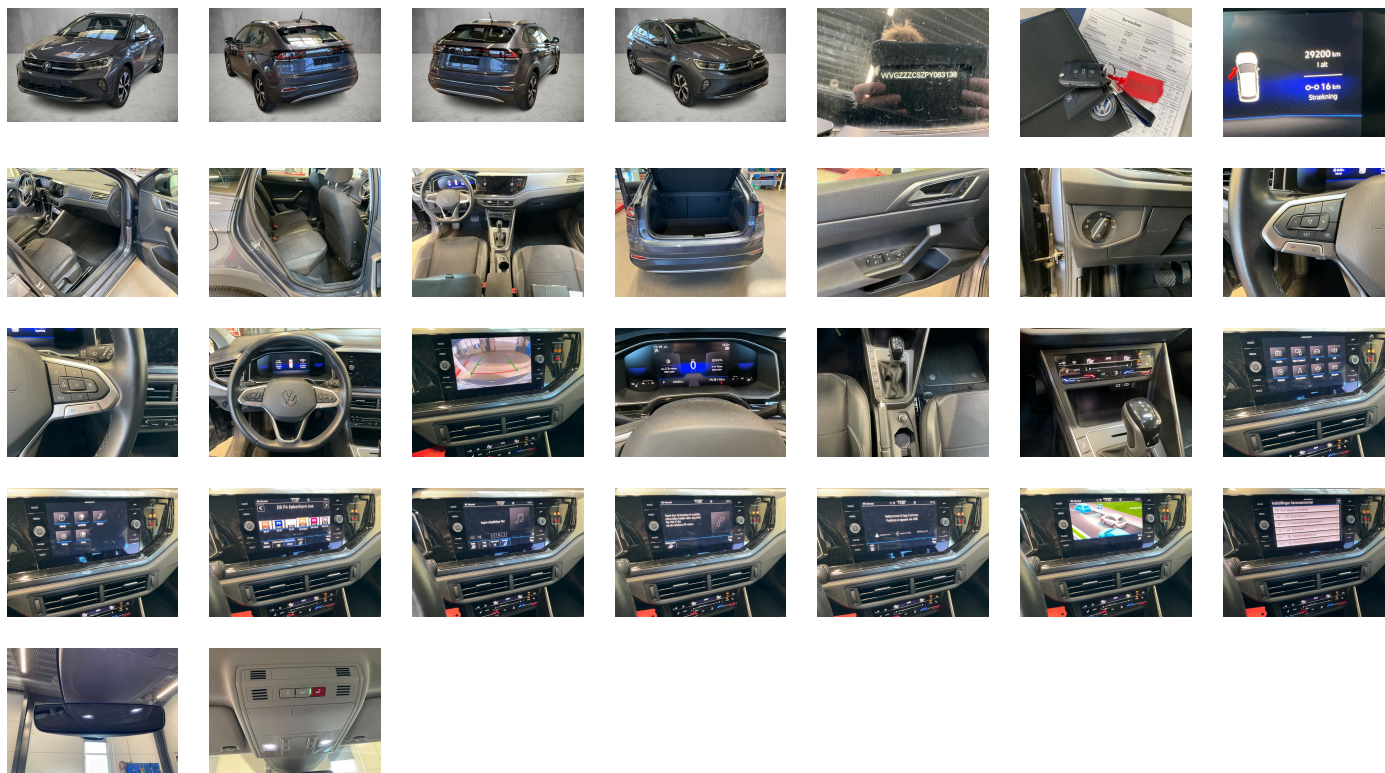
Legal tire tread (minimum 1.6 mm):

Yes

ACCESSORIES






Driving on the right, "Standard Plus" version, Sports equipment, Part set without country-specific prescriptive standard, Type approval country Denmark, Operating permit- alteration, 3-cylinder SI engine 1.0 l TSI- 81 kW, ECO function, Online service- with OCU- with head unit coding- without engine immobilizer interconnection, Driver alert system, Regional code " ECE " for radio, No special edition, No special purpose vehicle- standard equipment, Vehicles without special upgrade measures, 7-speed automatic transmission or dual-clutch transmission DSG- note: PR family EDF, Shock absorption in front, Battery 320 A (49 Ah), Tires 205/55 R17 low rolling resistance, Rear view camera system, Refrigerant R1234yf, Hatchback, Left-hand drive, Suspension range 39 installation control only- no requirement forecast, Standard battery/alternator capacity, Emergency call service, no registration required- service is activated upon delivery, Inserts of front seats and outer rear seats in fabric "Style", Driving Mode Selection and electronic differential lock XDS, Assistance package Park & Convenience, IQ.DRIVE assistance systems package, LongLife Service Regime, Without voice control, Service indicator 30 000 km or 2 years (variable), Chrome bezel for instrument cluster- vents- door handles- and gear shift, Multifunction camera, Storage compartment under front seat(s), Ambient lighting, Without dynamic road sign display, Digital radio reception DAB+, Sports comfort seats in front, Control of campaigns, 3-cylinder SI engine 1.0 l, Rear shock absorption, Illuminated molding between headlamps, Hill start assist, 2 USB-C ports in the front- 2 USB-C charging sockets on the center console in rear- charging capacity up to 45 W, Standard pedal cluster, Pedestrian and cyclist monitoring, Tires without specification of tire brand, Lights & Vision package, Denmark: DK package f. 9AK-KA1-WF1(CS12**)WLA/WLB(CS14**), Preparation for We Connect and We Connect Plus, Radio "Ready 2 Discover" incl. Streaming & Internet, Front stabilizer bar, 4 doors, Wheelbase, Dual-clutch transmission DSG DQ200, Pamplona manufacturing sequence, Without alternative drive system, Elimination of nameplate for engine designation on luggage compartment lid, Standard rear axle, Rear exhaust tailpipe (standard), Carpet mats in front and rear, Manual in Danish, Weight range 13 installation control only- no requirement forecast, Standard climatic zones, Rear overhang- medium, Electronic Stability Control w/ driver steering recommendation- ABS- ASR- EDL- EDTC and trailer stabilization, Fuel system for fuel-injected SI engine (tropicalized), Without trailer hitch, Special identification label for EC for M1 passenger vehicles, Activated carbon canister (Evaporative Emission Control System (EVAP)), Tire Mobility Set: 12-volt compressor and tire sealant, Surround lighting with welcome light, Disc brakes in rear, Trims for alloy wheels, Power steering, Standard wheel bolts, Without tool kit and jack, Warning triangle, Front-wheel drive, Electronic differential lock XDS, Disc brakes in front, Initial standard fuel filling, Height and longitudinally adjustable steering column, Leather-wrapped multi-function steering wheel with shifting paddles, Driving Mode Selection, Body-colored bumpers- air intake and radiator grille with chrome trims- rear bumper with chrome trim, Fresh air intake system with combinationfilter, Without additional tires, ISOFIX anchors for child seats on outer rear bench seats and on front passenger seat- compatible for i-Size, 3-point seat belt for center rear seat, Without roof insert (standard roof), Luggage compartment floor adjustable in 2 heights, Non-folding front passenger seat backrest, Front seats with height adjustment, Unsplit rear bench seat- asymmetric split folding backrest, 3-point seat belts in front with height adjustment and seat belt pretensioners, 3 head restraints in rear, Silver-anodized roof rails, 3-point seat belts for the outer rear seats, Door and side trim panel, Heated front seats, Emission standard EU6 AP, Laminated safety glass windshield- heat-insulating, Central locking system without SAFELock- with radio remote control and 2 remote control folding keys, Green heat-insulating glass windows on sides and in rear, Auto-dimming interior rearview mirror, Foamed dashboard, Rear floor panel module- type 3, Power windows, Driver and front passenger airbag with front passenger airbag deactivation, Decorative trims, 4 alloy wheels "Aberdeen"- 6.5J x 17- Black- diamond-turned surface, Carrier frequency 433.92 MHz-434.42 Mhz, Exterior mirrors: aspherical on driver side- convex on front passenger side, Transport protection film (minimum protection) with additional transport protection measures, Decorative inserts "Deep Iron Gray" for dashboard and front door trim panels, Vehicle class differentiation -2F0-, Illuminated vanity mirrors in sun visors, Safety-optimized front head restraints, Curtain airbags in front and rear- side airbags in front- center airbag, Front center armrest- longitudinally adjustable- with storage compartment, Body-colored exterior mirror housings, Semi-automated driving assistance Travel Assist and lane keeping system Lane Assist, Autonomous Emergency Braking Front Assist (for Adaptive Cruise Control ACC up to 210 km/h), Headliner, Hand brake lever handle in leather, Gearshift knob in leather, Light unit in front footwell, Exterior mirrors- power-adjustable- folding and heated- w/ front passenger exterior mirror lowering function, Electronic immobilizer, Multi-color Digital Cockpit- selection of different info profiles possible, Tire Pressure Monitoring System, Start-stop system with regenerative braking, Without protective film for scuff plate, Lumbar supports in front, Preparation for subsequent activation: Navigation feature "Discover Media" incl. Streaming & Internet, Proactive passenger protection system in combination with Front Assist, Park Assist with Park Distance Control, Lane change system Side Assist, Radio, Without second battery, Alternator 140 A, Advanced high-beam control Dynamic Light Assist for LED matrix headlamps, IQ.LIGHT - LED matrix headlamps with LED separate daytime running light, Rear window wiper with intermittent control, Rain sensor, Dynamic headlight range control, 6 speakers, 2 reading lights in front, Rear fog light on one side- back-up light on both sides, Adaptive Cruise Control ACC stop & go incl. speed limiter, LED rear combination lamps, Front fog lamps and cornering light, Warning lamp for washer fluid level, Without headlamp washer system, Single-tone horn, Diversity antenna for FM reception, Not hot country, Air Care Climatronic 2 zone automatic climate control with enhanced air filter with activated carbon, Luggage compartment lighting, Automatic headlight control with LED separate daytime running light and exit and entry lighting, Non-smoker's package: Storage compartment and 12-V outlet in front, Without auxiliary heater/parking heater, Warning signal and warning light for front and rear seat belts not fastened, Without heated washer nozzles, App-Connect incl. App-Connect Wireless for Apple CarPlay and Android Auto, Mobile phone interface, Equipment options subset for Denmark

PICTURES



Picture viewer: <https://fm.bilsalg.dk/business/picturebrowser?t=full&guid=91eebcc8-d430-4783-9e33-08a94a21fdad&carid=20279461>

OVERVIEW OF DAMAGES AND SHORTAGES

N°	LOCATION	TYPE	SEVERITY	INSURANCE	NOTES	DAMAGE GROUP
1	Rear Bumper	Scratch	C4		Reporting needed	
						
2	R. Front Rim	Scratch	C4		Reporting needed	
						
3	R. Rear Rim	Scratch	C4		Reporting needed	

Severity explanation:

C0 = No damage / C1 = Simple preparation / C2 = Minor preparation needed / C3 = Can be smart repaired / C4 = Repair/spray paint / C5 = Need replacement

ELECTRICAL AND MECHANICAL CONDITION

N°	LOCATION	TYPE	NOTES
1	Is the car drivable	Yes	