

**VEHICLE DESCRIPTION - Audi A4 S Line Plus 2.0 40 TFSI MHEV**



**First registration date:**  
4/2023

**VIN:**  
WAUZZZF48PA061268

**Colour:**  
Black Metallic Normal gloss

**Mileage (km):**  
57.850

**Gear:**  
Automatic (7 Gears)

**Fuel type:**  
Hybrid petrol

**Body type:**  
Estate Wagon

**Number of doors:**  
5

**Drive type:**  
FWD

**Model year:**  
2019-2024

**Engine power:**  
150 kW

**Number of seats:**  
5

**Engine size (cc):**  
1984

**Interior:**  
Dark grey Fabric

**VEHICLE DETAILS**

**Number of keys:**  
2

**Number of license plates:**  
2

**Registration certificate:**  
Part 1 & 2 present

**Service documentation:**  
No

**Inspection date:**  
29-04-2026

**Last service (year/month):**

**Mileage (km) at last service:**

**SUMMARY OF THE VEHICLE'S CONDITION**

**Is the car in a driveable condition:**  
Yes

**Legal tire tread (minimum 1.6 mm):**  
Yes

## WHEELS

| TYPE   | SEASON       | BRAND | POSITION    | RIM       | SIZE | TREAD |
|--------|--------------|-------|-------------|-----------|------|-------|
| Fitted | Summer tires |       | Front Left  | Alloy rim | 18"  | 5 mm  |
| Fitted | Summer tires |       | Rear Right  | Alloy rim | 18"  | 5 mm  |
| Fitted | Summer tires |       | Rear Left   | Alloy rim | 18"  | 5 mm  |
| Fitted | Summer tires |       | Front Right | Alloy rim | 18"  | 5 mm  |

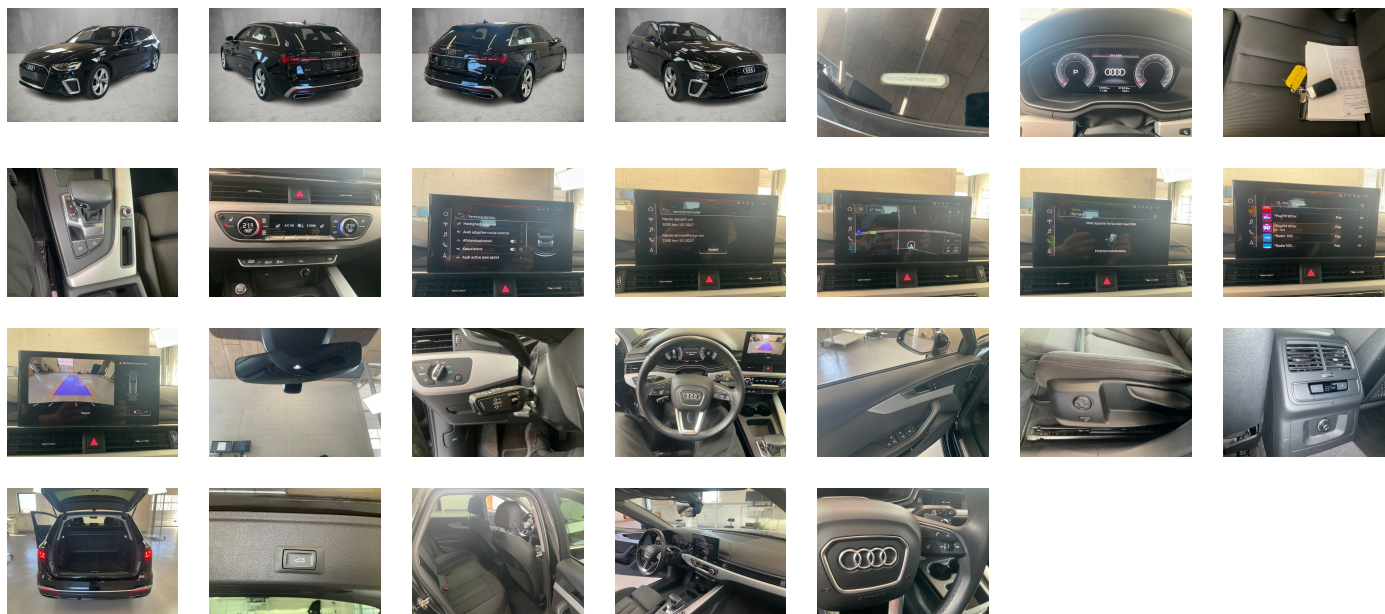
### Legal tire tread (minimum 1.6 mm):

Yes

## ACCESSORIES







Driving on the right, No self-collection, Audi AG, Top speed limited to 210 km/h, S line, Part set without country-specific prescriptive standard, Type approval country Denmark, Operating permit- alteration, 4-cyl. SI eng. 2.0 l/150 kW (16V) turbo FSI- homogen.- base eng. TR6/T2A/T2C/ TC3/T12/T66/T4X/T12/T5V/TC1/T1F/T4E/T4M, Regional code " ECE " for radio, No special edition, Control of series production, Without AdBlue tank, Basic equipment variant, Preparation for functions on demand, Production wheels, Country group A, Seat belts in Black, No special purpose vehicle- standard equipment, Without preconditioning, Without antenna amplifier, Without rear differential, Vehicles with special upgrade measures, Accent surfaces- Matt Black, Without Car2X, S tronic, Audi connect navigation & infotainment, Preparation for smartphone interface, Audi connect emergency call & service with Audi connect remote & control, SI engine, Data module- Europe, Tires with optimized rolling resistance- speed-limited- 245/40 R18, Battery 380 A (68 Ah), Reversing camera, Refrigerant R1234yf, Without head-up display, Wagon/Avant, Left-hand drive, Engine cover, Transit coating (type 1), Standard battery/alternator capacity, System cloth, Assist package Tour, LED headlights and LED rear lights with dynamic turn signal in rear, Storage and Luggage Compartment package, Service indicator 30 000 km or 2 years ( variable ), With multifunction camera, Rear window-rear door and side windows in clear glass, Interior lighting, Camera-based traffic sign recognition, Digital Audio Broadcasting, Electromechanical power steering, Sport seats- front, Control (in-plant), 4-cylinder SI engine 2.0 l unit 06N.A 888evo4, Hold assist, Instrument cluster- km/h speedometer, Without garage door opener, Standard pedal cluster, Standard electric, Extended pedestrian protection, Door sill trims with aluminum inlays- front- illuminated- S logo, Tires without specification of tire brand, Wheels- 5-Y-spoke- S design- 8.0J x 18- 245/40 R18 tires, Equipment package for Denmark, Equipment package for Denmark, Internal control code, Internal control code, Internal control code, Standard, Standard manufacturing sequence, tiptronic, Weight category front axle weight range 8, Mild hybrid, With special labels safety certificates for Denmark, Fuel tank with increased capacity, Standard exhaust system, Without ignition/starter switch locking system- without steering lock, Floor mats- front and rear, Without special color trim, Manual in Danish, Weight range 7 installation control only- no requirement forecast, Standard climatic zones, Basic, Fuel system for SI engine with direct injection (FSI), Sport suspension, Preparation for trailer hitch, Special identification label (EU), Tire repair kit, Disk brakes- rear- 16-inch (ECE), Disk brakes- front- 16-inch (ECE), Standard wheel bolts, Without additional front underbody guard, Vehicle tool kit, First-aid kit with warning triangle and high-visibility vests, Installation parts for four-cylinder engine, Leather steering wheel in 3-spoke design with multifunction plus and steering wheel heating, Front-wheel drive, Initial standard fuel filling, Without locking and starting systems, Insert for the filling up of unleaded fuel, Audi drive select, Labels in English and German, Bumpers- S line, Without additional tires, Model name as per new output designation, ISOFIX child seat mounting and top tether for the outer rear seats, Without roof insert (standard roof), Loading floor, Without child seat anchora in front (ISOFIX), Without backrest release for front seats, Front seats- manually adjustable, Passenger car design, Split-folding rear seat backrest, Roof rails in aluminum, Without roll-up sunshade, Seat heating- front, Emission standard EU6 AP, Without seat ventilation/massage seat, Luggage compartment lid- electrically opening and closing, Windshield with heat-reflecting glass and acoustic glass, Child-proof lock, Remote control key- without Safelock, Rear and side windows with heat-insulating glazing, Interior mirror- automatically dimming- frameless, Airbags- front, front passenger airbag can be deactivated, Side airbags- front and head airbag system, Gloss package, Luggage compartment trim (design 2), Without special body measures, Carrier frequency 433.92 MHz-434.42 Mhz, Without rear spoiler, Adhesive film, Without front spoiler, Inlays- diamond paint finish- Silver Gray, Exterior mirrors on the right- (large field of view)- convex, Left exterior mirror- aspherical, Sun visors- front, Head restraints- front, Without fire extinguisher, Additional stone guard body covers, Comfort center armrest- front, Exterior mirror housings in body color, Without decorative films/emblems, Roof in body color, Audi active lane assist, Body-colored door handles, Audi pre sense city, Headlining in cloth in specific color, Luggage compartment mat, Rear trim panel (ECE), Front license plate carrier, Exterior mirrors- electrically adjustable and heated, Top speed limited to 210 km/h, Electronic immobilizer, Without heat accumulator/auxiliary heater, Without preparation for VTS (vehicle tracking system), Without leather, Vehicle class differentiation -8W0/8WA-, Tire pressure loss indicator, Start-stop system, Without wind deflector, MMI navigation plus with MMI touch, Without extended safety system, Parking system plus, Without lane change assist, High beam assistant, LED headlights, Lumbar support- pneumatically adjustable with massage function for the front seats, Separate daytime running light, 8 loudspeakers, Audi adaptive cruise control, LED rear lights plus, Without headlamp washer system, Two-tone horn, Not hot country, 3-zone deluxe automatic air conditioning, Without integrated toll system, Belt-driven integrated starter alternator 12 V- 130 - 200 A, Non-smoker version, Without neck heating, Without auxiliary heater/parking heater, Seat belt reminder, Audi virtual cockpit plus, Without additional warning lights, Without "Multimedia" in vehicle, Audi phone box light, Equipment options subset for Denmark, Standard-production quality

**PICTURES**



**Picture viewer:** <https://fm.bilsalg.dk/business/picturebrowser?t=full&guid=07d9aafc-8913-4d4b-aea6-be80fbbc7ed3&carid=20279460>

## OVERVIEW OF DAMAGES AND SHORTAGES

| N° | LOCATION  | TYPE    | SEVERITY | INSURANCE | NOTES            | DAMAGE GROUP |
|----|---|---------|----------|-----------|------------------|--------------|
| 1  | R. Rear Quarter Panel   | Dent    | C4       |           | Reporting needed | Group 1      |
|    |    |         |          |           |                  |              |
| 2  | Rear Bumper   | Scratch | C4       |           | Reporting needed | Group 1      |
|    |    |         |          |           |                  |              |
| 3  | R. Rear Rim   | Scratch | C4       |           | Reporting needed |              |
|    |    |         |          |           |                  |              |
| 4  | R. Rear Door  | Dent    | C3       |           |                  |              |
|    |    |         |          |           |                  |              |
| 5  | R. Front Door   | Scratch | C3       |           |                  |              |
|    |  |         |          |           |                  |              |
| 6  | Front Bumper  | Scratch | C3       |           |                  |              |
|    |  |         |          |           |                  |              |

Severity explanation:

C0 = No damage / C1 = Simple preparation / C2 = Minor preparation needed / C3 = Can be smart repaired / C4 = Repair/spray paint / C5 = Need replacement

## ELECTRICAL AND MECHANICAL CONDITION

| N° | LOCATION            | TYPE | NOTES |
|----|---------------------|------|-------|
| 1  | Is the car drivable | Yes  |       |