

**VEHICLE DESCRIPTION - Škoda Fabia Ambition 1.0 TSI**



**First registration date**  
4/2023

**VIN:**  
TMBER9PJ1P4062959

**Colour:**  
Blue Metallic Normal gloss

**Mileage (km):**  
44.174

**Gear:**  
Manual (6 Gears)

**Fuel type:**  
Gasoline

**Body type:**  
Hatchback

**Number of doors:**  
5

**Drive type:**  
FWD

**Model year:**  
2021

**Engine power:**  
81 kW

**Number of seats:**  
5

**Engine size (cc)**  
999

**Interior:**  
Black Fabric

**VEHICLE DETAILS**

**Number of keys:**  
2

**Number of license plates:**  
2

**Registration certificate:**  
Part 1 & 2 present

**Service documentation:**  
Yes

**Inspection date:**  
24-04-2026

**Last service (year/month):**  
2025/3


**Mileage (km) at last service:**  
28.176

**SUMMARY OF THE VEHICLE'S CONDITION**

**Is the car in a driveable condition:**  
Yes

**Legal tire tread (minimum 1.6 mm):**  
Yes

## WHEELS

 TYPE	SEASON	BRAND	POSITION	RIM	SIZE	TREAD
Fitted	Summer tires		Front Left	Alloy rim	15"	4 mm
Fitted	Summer tires		Rear Right	Alloy rim	15"	4 mm
Fitted	Summer tires		Rear Left	Alloy rim	15"	4 mm
Fitted	Summer tires		Front Right	Alloy rim	15"	4 mm

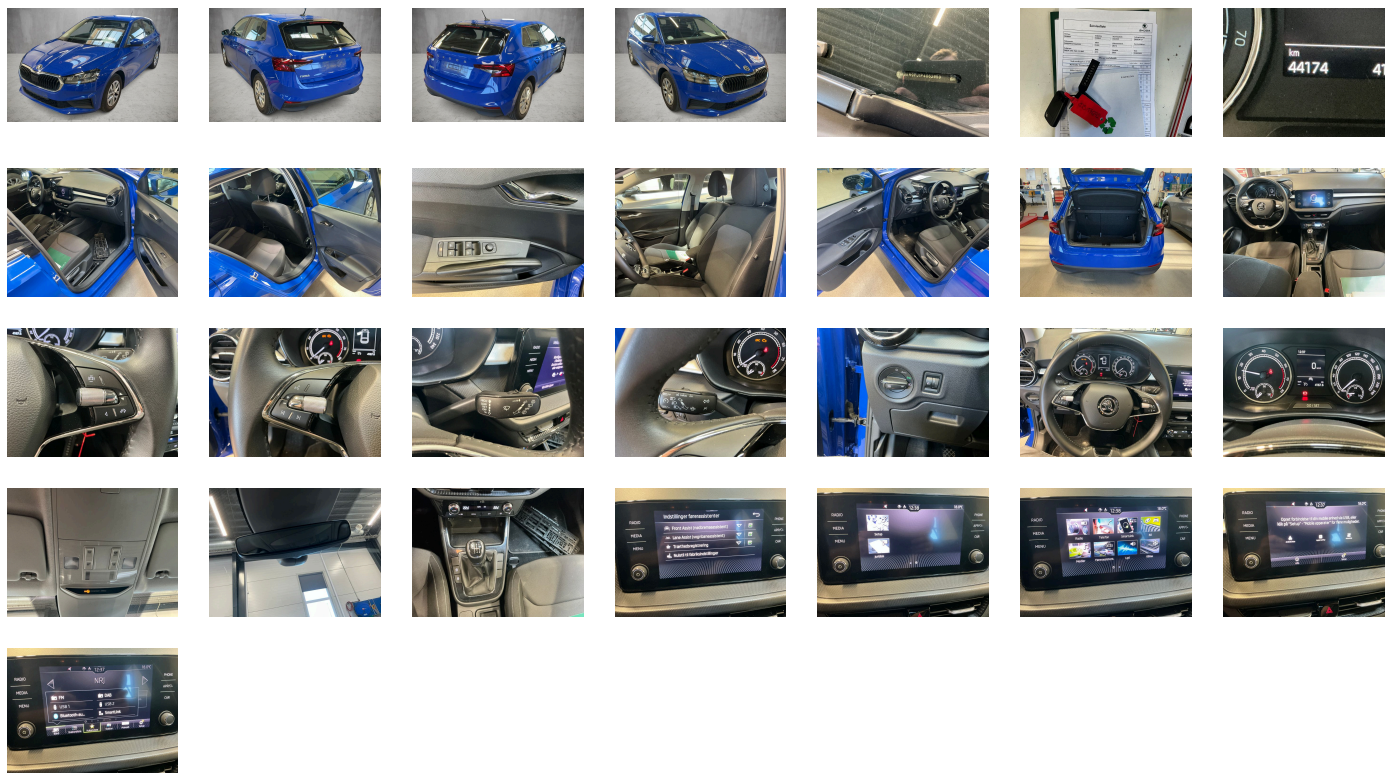
### Legal tire tread (minimum 1.6 mm):

Yes

## ACCESSORIES






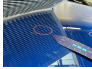
Driving on the right, Standard version, Comfort equipment, Part set without country-specific prescriptive standard, Type approval country Denmark, Operating permit- alteration, 3-cylinder SI engine 1.0 l/81 kW TSI base engine is TJ4/TC5, Without ECO function, Remote Access / Pro-active service, DRIVER ALERT SYSTEM, Regional code " ECE " for radio, No special edition, Standard paint coating, CO2 variant, No special purpose vehicle- standard equipment, 6-speed manual transmission, Shock absorption in front, Without bracket, Curb weight range 1, Rear axle weight- type 1, Radio Bolero 8", Battery 380 A (59 Ah) EFB+, Tires 185/65 R15 88H super-low rolling resistance- generation 2, Without camera systems/accident sensors, Refrigerant R1234yf, without USB in interior rear view mirror, Hatchback, Left-hand drive, Suspension range 04 installation control only- no requirement forecast, Without adapter, With umbrella, E-Call+, Seat trim covers in fabric, Without storage compartment package/box, LongLife Service Regime, Without voice control, Service indicator 30 000 km or 2 years ( variable ), Chrome package, With multifunction camera, Without drawers under front seats, Without add. lights (interior lighting), Without dynamic road sign display, DAB - Digital radio reception, Standard seats in front, Lower decorative inserts, Control of logistics 2, 3-cylinder SI engine 1.0 l unit 05C.A, Without hill start assist/hill descent control/comfort driving assist, Instrument cluster- km/h speedometer, 2x USB front (typ C data), Standard pedal cluster, Extended and proactive pedestrian and cyclist protection, Tires without specification of tire brand, Remote Access 1 year, Front stabilizer bar, 4 doors, Wheelbase, Installation differentiation for transmission MQ 200\_GA -- vehicle components --, Standard manufacturing sequence, Fuel tank, Without alternative drive system, Nameplate set in basic style, Standard rear axle, Rear exhaust tailpipe (standard), Without floor mats, Manual in Danish, Weight range 8 installation control only- no requirement forecast, Standard climatic zones, Rear overhang-short, Electronic stability control (ESC), Fuel system for fuel-injected SI engine (tropicalized), Antifreeze up to -25 degree Celsius tolerance up to -30 degree C, Preparation for tow bar, Special identification label for EC for M1 passenger vehicles, Activated carbon canister (Evaporative Emission Control System (EVAP)), Breakdown kit, Rear shock absorption, Disk brakes rear, Trims for alloy wheels, Power steering, Wheel bolts with anti-theft protection (unlockable), Additional front underbody guard, Without tool kit and jack, Front-wheel drive, Disc brakes in front (Geomet D), Initial standard fuel filling, Without delivery equipment, Axial and vertical adjustable steering column, Vehicle class differentiation -6VN-, Without "drive select", Body-colored bumpers, Standard bumpers, Fresh air intake system with combinationfilter, Fuel filler cap, Multi-function steering wheel, Child seat anchors f. child seat system i-Size- 2x top tether and child seat anchors in front on front passenger side, Without partition, Central console - cuholder "Snowman", Without roof insert (standard roof), Without luggage/load compartment floor, Without backrest release for front seats, Door and side trim panel, Height - adjustable driver and co-driver seat, Rear seat backrest split 60:40- unsplit rear seat bench, Without storage compartments in trunk, 3-point seat belts in front- with pretensioner/lap belt pretensioner and height adjustment, 3rd head restrain rest, Preparation for roof load rack, Luggage compartment cover- folding, Acoustics package "Standard", 3-point seat belts- outer rear with ECE label, Without storage compartment, Seat heater for front seats separately controlled, Emission standard EU6 AP, Heat-reflecting windshield, Central locking w/ radio remote control- interior controls- without SAFELock, Side and rear windows in heat-insulatingglass, Breakaway interior rearview mirror- auto-dimming, Rear floor panel module- type 1, Front and rear windows electric (auto up/down function for all windows), Airbag on driver and front passenger side- knee airbag on driver side- with front passenger airbag deactivation, Side airbag in front and rear with curtain airbag, Standard decorative trims, Standard glove compartment, Alloy wheels "ROTARE" silver 5-SJ x 15" - 4 pcs, Carrier frequency 433.92 MHz-434.42 Mhz, Exterior mirrors: convex on driver side- convex on front passenger side, Rear spoiler, Transport protection film with additional transport protection measures, Decorative inserts, Folding grab handles at roof frame, Sun visors with mirror- airbag label on front passenger sun visor, Front head restraints, Without fire extinguisher, Without additional side body covers (stone guard), Center armrest in front, Outside door mirrors and door handles inbody color, Without decorative films/emoles, Lane Assist, Radiator grille, Forward collision warning incl. autonomous emergency braking- without adaptive cruise control, Vent, Without tie down straps/net/pocket, Hand brake lever handle in leather, Gearshift knob/handle in leather, Without luggage compartment floor covering, Without additional seals outside, Exterior mirrors- electr. adjustable- heated - painted in exterior colour (forMC colored black), Electronic immobilizer, Without socket, Without protective film for scuff plate, Without heat accumulator/auxiliary heater, Tire pressure monitoring system, Start-stop system with regenerative braking, Spectacle storage compartment/bracket, Without lumbar support in seat backrests, Without navigation device, Without extended safety system, Parking sensors rear, Without lane change assist, Without second battery, Alternator 140 A, Without light control, LED headlamps, Separate daytime running light with automatic headlight control and manual Coming and Leaving Home feature, Rear window wiper and washer system with intermittent control, Windshield wiper intermittent control with light sensor, Key for locking system with remote control, Headlight range control, 4 speakers front + 2 rear incl. koda Surround, Two reading lights in front- two in rear, Rear fog lamp for driving on the right, Cruise control with Speedlimiter, Rear combination lamp, Without front fog lamps, Washer fluid level indicator, Without headlamp washer system, Single-tone horn, Antenna for FM reception only, Not hot country, Climatronic with impact pressure control- CFC-free, Luggage compartment lighting, Without additional malfunction display, Non-smoker's package, Without auxiliary heater/parking heater, Seatbelt warning - front + rear seats, "MAXI DOT" (KI Mid), Heated washer nozzles in front, "SMART LINK", Bluetooth, Equipment options subset for Denmark

**PICTURES**



**Picture viewer:** <https://fm.bilsalg.dk/business/picturebrowser?t=full&guid=a1c9938b-ad26-4b40-bd1d-20e72fdf588a&carid=20259357>

## OVERVIEW OF DAMAGES AND SHORTAGES

N°	LOCATION	TYPE	SEVERITY	INSURANCE	NOTES	DAMAGE GROUP
1	Hood	Dent	C4		Reporting needed	Group 1
						
2	Front Bumper	Scratch	C4		Reporting needed	
						
3	Roof	Dent	C4		Reporting needed	Group 1
						

Severity explanation:

C0 = No damage / C1 = Simple preparation / C2 = Minor preparation needed / C3 = Can be smart repaired / C4 = Repair/spray paint / C5 = Need replacement

## ELECTRICAL AND MECHANICAL CONDITION

N°	LOCATION	TYPE	NOTES
1	Is the car drivable	Yes	