

VEHICLE DESCRIPTION - Seat Ibiza 1.0 MPI



First registration date:
3/2023

VIN:
VSSZZZKJ0PR027291

Colour:
Gray Metallic Normal gloss

Mileage (km):
45.122

Gear:
Manual (5 Gears)

Fuel type:
Gasoline

Body type:
Hatchback

Number of doors:
5

Drive type:
FWD

Model year:
2021-2025

Engine power:
59 kW

Number of seats:
5

Engine size (cc):
999

Interior:

VEHICLE DETAILS

Number of keys:
2

Number of license plates:
2

Registration certificate:
Part 1 & 2 present

Service documentation:
No

Inspection date:
08-04-2026

Last service (year/month):

Mileage (km) at last service:

SUMMARY OF THE VEHICLE'S CONDITION

Is the car in a driveable condition:
Yes

Legal tire tread (minimum 1.6 mm):
Yes

WHEELS

TYPE	SEASON	BRAND	POSITION	RIM	SIZE	TREAD
Fitted	Summer tires		Front Left	Alloy rim	17"	6 mm
Fitted	Summer tires		Rear Right	Alloy rim	17"	6 mm
Fitted	Summer tires		Rear Left	Alloy rim	17"	6 mm
Fitted	Summer tires		Front Right	Alloy rim	17"	6 mm

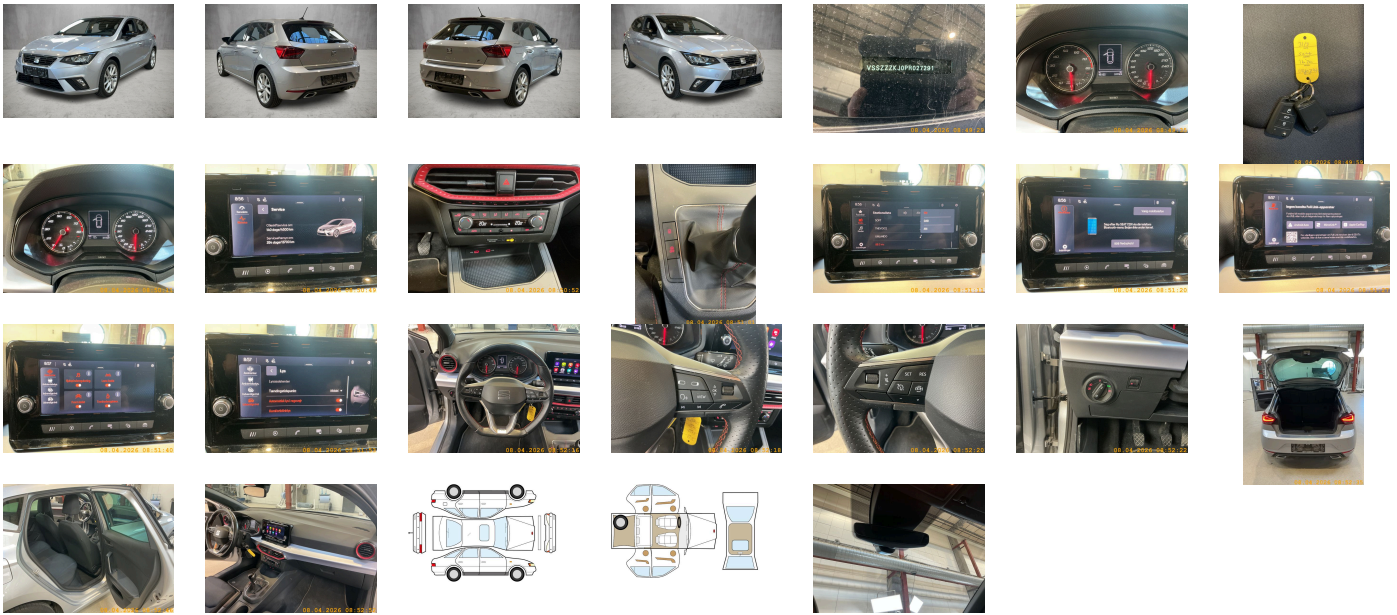
Legal tire tread (minimum 1.6 mm):

Yes

ACCESSORIES

Driving on the right, Standard version, In-plant control of self-collection, Top sports equipment, Part set without country-specific prescriptive standard, Type approval country Denmark, Operating permit- alteration, 3-cylinder gasoline engine 1.0 l/59 kW base engine: T5Y- "MPI", Without ECO function, Online service- with OCU- without head unit coding- without engine immobilizer interconnection, Driver alert system, Regional code " ECE " for radio, No special edition, Control of series production, Standard paint coating, Without customized installation, Variant, No special purpose vehicle- standard equipment, Vehicles with special upgrade measures, Without applications, 5-speed manual transmission "M5", Shock absorption in front, Tires 215/45 R17 91W xl, Entry-level infotainment system Radio 2 (MIB3) 8.25-inch, Battery 320 A (49 Ah), Without camera systems/accident sensors, Refrigerant R1234yf, Standard license plate lighting, Hatchback, Left-hand drive, Suspension range 11 installation control only- no requirement forecast, Private emergency call system, Seat trim covers in fabric, Park distance control using ultrasonic sensors, Analog instrument cluster, LongLife Service Regime, Without voice control, Service indicator 30 000 km or 2 years (variable), Chrome package, With multifunction camera, Without drawers under front seats, Interior ambient lighting- type 1, Without dynamic road sign display, Digital radio reception, Standard seats in front, 3-cylinder SI engine 1.0 l unit 05C.1, Hill start assist, Instrument cluster- km/h speedometer, External- USB type C- only data socket(s), Standard pedal cluster, Extended and proactive pedestrian and cyclist protection, Tires without specification of tire brand, Alloy wheels 7J x 17, Front stabilizer bar, 4 doors, Wheelbase, Installation differentiation for transmission MQ 200 -- vehicle components --, Standard manufacturing sequence, Without alternative drive system, Nameplate set, Heavy-duty rear axle (design 2), Rear exhaust tailpipe (standard), Without floor mats, Without special color trim, Without information kit, Weight range 8 installation control only- no requirement forecast, Standard climatic zones, Rear overhang- short, Without special specifications, Electronic stability control (ESC), Fuel system for fuel-injected SI engine (tropicalized), Antifreeze up to -25 degree Celsius tolerance up to -30 degree C, Without trailer hitch, Special identification label for EC for M1 passenger vehicles, Activated carbon canister (Evaporative Emission Control System (EVAP)), Breakdown kit, Rear shock absorption- sports version, Drum brakes in rear, Standard air cleaner, Trims for alloy wheels, Power steering, Standard wheel bolts, Without additional front underbody guard, Tool kit, Vehicle class differentiation -6F0-, Without first aid kit and warning triangle, Front-wheel drive, Electronic differential lock XDS- dynamic traction support, Disc brakes in front (Geomet D), Initial standard fuel filling, Without delivery equipment, Axial and vertical adjustable steering column, Leather-wrapped multi-function sports steering wheel, Without "drive select", Sports bumpers, Labels in Danish- Finish and Swedish, Standard design, Fresh air intake system with combinationfilter, Without additional tires, Type sign and company logo, Child seat anchors for child seat system ISOFIX, 3-point seat belt for center rear seat, Without roof insert (standard roof), Without luggage/load compartment floor, Without backrest release for front seats, Door and side trim panel, Manual height adjustment for front seats, Unsplit rear seat bench- split folding backrest, Without mounting fixture in luggage compartment, 3-point seat belts in front- with belt clamping device- without height adjustment, Three rear head restraints, Without roof rails/roof load rack, Luggage compartment cover- folding, Without additional noise suppression measures for passenger compartment, 3-point seat belts- outer rear with ECE label, Seat heater for front seats separately controlled, Emission standard EU6 AP, Protective side molding, Heat-reflecting windshield, Central locking w/ radio remote control-interior controls- without SAFELOCK, Side windows in heat-insulating glass- from B-pillar and rear window dark tinted, Breakaway interior rearview mirror- auto-dimming, Standard dashboard, Rear floor panel module- type 1, Power windows with comfort operation and circuit breaker, Airbag on driver and front passenger side- without knee airbag- with front passenger airbag deactivation, Without luggage nets/pockets on backrests, Side airbag in front with curtain airbag, Standard decorative trims, Luggage compartment trim (design 1), Without special body measures, Carrier frequency 433.92 MHz-434.42 Mhz, Without rear spoiler, Transport protection film (minimum protection) with additional transport protection measures, Decorative inserts, Right exterior mirror- convex, Left exterior mirror- convex, Sun visors with mirror- airbag label on front passenger sun visor, Front head restraints, Without fire extinguisher, Without additional side body covers (stone guard), Without center armrest in front, Exterior mirror housings and various add-on parts in body color, Emblems, Lane keeping system, Forward collision warning incl. autonomous emergency braking- without adaptive cruise control, Vent, Unsplit molded headliner, Hand brake lever handle in leather, Gearshift knob/handle in leather, Interior light in footwell, Exterior mirrors- power-folding/ adjustment- heated, Electronic immobilizer, Without CD changer/CD player, Without heat accumulator/auxiliary heater, Tire pressure monitoring system, Start-stop system with regenerative braking, Without lumbar support in seat backrests, Without CD/DVD for navigation, Without navigation device, Without extended safety system, Park distance control, Without lane change assist, Without second battery, Alternator 140 A, Without light control, LED headlamps, Separate daytime running light with automatic headlight control and manual Coming and Leaving Home feature, Rear window wiper and washer system with intermittent control, Windshield wiper intermittent control with light/rain sensor, Headlight range control, 6 speakers (passive), LED rear combination lamp, 2 reading lights in front, Rear fog lamp, Cruise control system and speed limiter, Front fog lamps, Without washer fluid level indicator, Without headlamp washer system, Single-tone horn, Antenna for AM/FM reception, Not hot country, Climatronic with impact pressure control- CFC-free, Non-smoker's package, Without auxiliary heater/parking heater, Visual and acoustic seat belt reminder- electric contact in front and rear, Multi-function display/trip computer "Medium", Without heated washer nozzles, Wired & Wireless App-Connect, Mobile phone interface, Equipment options subset for Denmark

PICTURES



Picture viewer: <https://fm.bilsalg.dk/business/picturebrowser?t=full&guid=d1f7b860-2776-4bbf-b40b-b0f95dc4b460&carid=20237981>

OVERVIEW OF DAMAGES AND SHORTAGES

No damages or shortages

ELECTRICAL AND MECHANICAL CONDITION

N° LOCATION	TYPE	NOTES
1	Is the car drivable	Yes