

VEHICLE DESCRIPTION - Audi A5 Prestige Plus 2.0 40 TFSI MHEV



First registration date:
3/2023

VIN:
WAUZZZF5XPA031620

Colour:
Red Metallic Normal gloss

Mileage (km):
54.491

Gear:
Automatic (7 Gears)

Fuel type:
Hybrid petrol

Body type:
Hatchback

Number of doors:
5

Drive type:
FWD

Model year:
2020-2024

Engine power:
150 kW

Number of seats:
5

Engine size (cc):
1984

Interior:
Black Leather

VEHICLE DETAILS

Number of keys:
2

Number of license plates:
2

Registration certificate:
Part 1 & 2 present

Service documentation:
Yes

Inspection date:
17-04-2026

Last service (year/month):
2025/2

Mileage (km) at last service:
39.141

SUMMARY OF THE VEHICLE'S CONDITION

Is the car in a driveable condition:
Yes

Legal tire tread (minimum 1.6 mm):
Yes

WHEELS

TYPE	SEASON	BRAND	POSITION	RIM	SIZE	TREAD
Fitted	Winter tires		Front Left	Alloy rim	18"	7 mm
Fitted	Winter tires		Front Right	Alloy rim	18"	7 mm
Fitted	Winter tires		Rear Left	Alloy rim	18"	7 mm
Fitted	Winter tires		Rear Right	Alloy rim	18"	7 mm
Extra Wheel	Summer tires		Front Left	No rim	18"	4 mm
Extra Wheel	Summer tires		Front Right	No rim	18"	4 mm
Extra Wheel	Summer tires		Rear Left	No rim	18"	4 mm
Extra Wheel	Summer tires		Rear Right	No rim	18"	4 mm

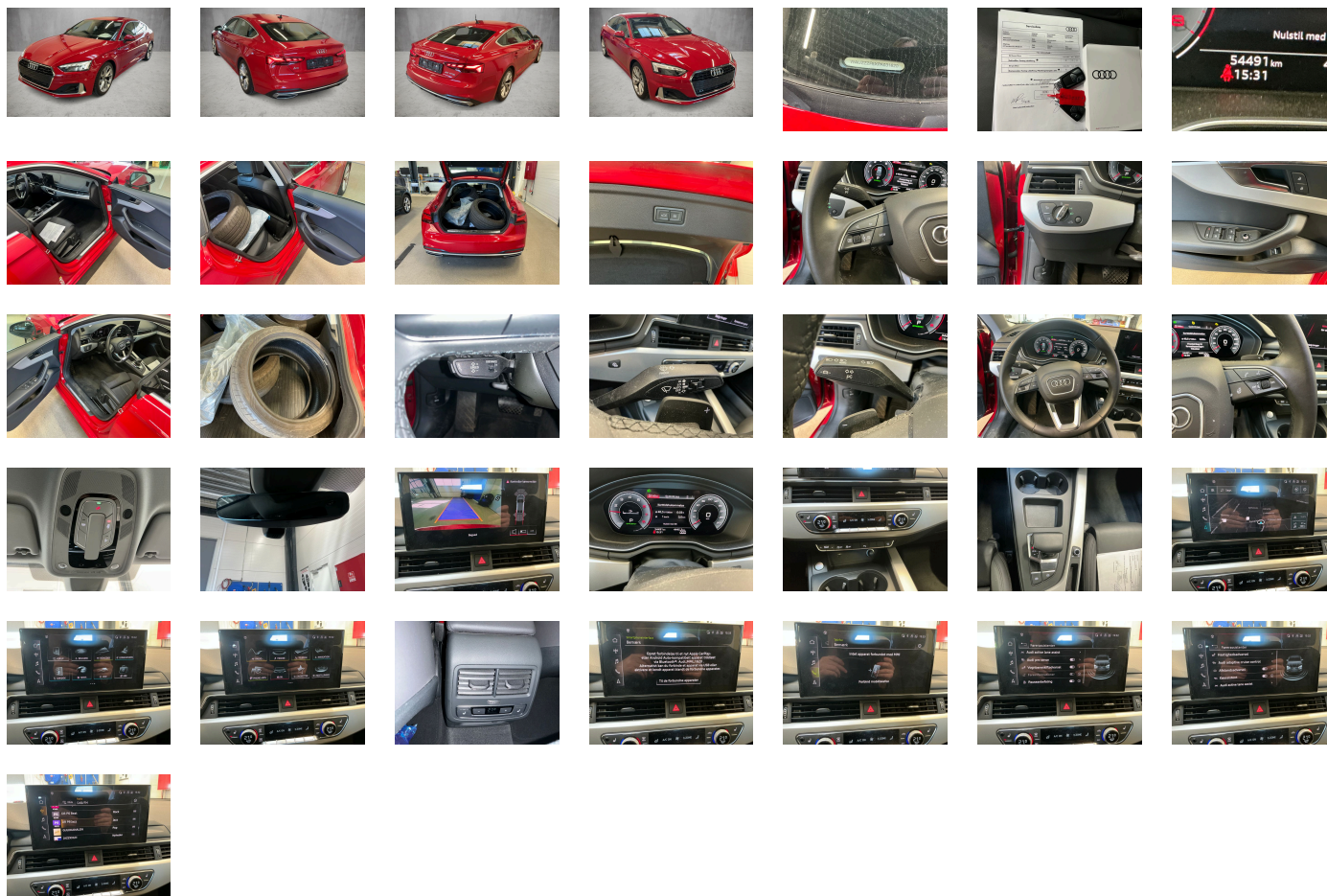
Legal tire tread (minimum 1.6 mm):

Yes

ACCESSORIES









Standard-production quality, Driving on the right, No self-collection, Audi AG, Category 1, advanced, Part set without country-specific prescriptive standard, Type approval country Denmark, Operating permit- alteration, Wheels- 5-V-spoke Y- 8.5J x 18- 245/40 R18 tires, 4-cyl. SI eng. 2.0 I/150 kW (16V) turbo FSI- homogen.- base eng. TR6/T2A/T2C/ TC3/TI2/T66/T4X/TI2/T5V/TC1/T1F/T4E/T4M, Regional code " ECE " for radio, No special edition, Control of series production, Without AdBlue tank, Basic equipment variant, Preparation for functions on demand, Production wheels, Country group A, N.N.N. Type 1, No special purpose vehicle- standard equipment, Without preconditioning, LTE support for Audi phone box, Without rear differential, Vehicles with special upgrade measures, Accent surfaces- Matt Black, Without Car2X, S tronic, Audi connect navigation & infotainment, Smartphone interface, Audi connect emergency call & service with Audi connect remote & control, SI engine, Data module- Europe, Tires with optimized rolling resistance- speed-limited- 245/40 R18, Battery 380 A (68 Ah), Reversing camera, Refrigerant R1234yf, Without head-up display, Sportsback, Left-hand drive, Engine cover, Transit coating (type 1), Standard battery/alternator capacity, Leather/mono.pur 550 artificial leather combination, Convenience key with sensor-controlled release of the luggage compartment lid, Matrix LED headlights and LED rear lights, Winter package 2, Without Storage package, Service indicator 30 000 km or 2 years (variable), With multifunction camera, Clear glass, Interior lighting, Camera-based traffic sign recognition, Digital Audio Broadcasting, Electromechanical power steering, Sports seats in front, 4-cylinder SI engine 2.0 I unit 06N.A 888evo4, Hold assist, Instrument cluster-km/h speedometer, Without garage door opener, Standard pedal cluster, Standard electric, Extended pedestrian protection, Tires without specification of tire brand, Equipment package for Denmark, Equipment package for Denmark, Internal control code, Internal control code, Internal control code, Internal control code, Standard, Standard manufacturing sequence, tiptronic, Weight category front axle weight range 7, Mild hybrid, With special labels safety certificates for Denmark, Fuel tank with increased capacity, Standard exhaust system, Without ignition/starter switch locking system- without steering lock, Floor mats- front and rear, Without special color trim, Manual in Danish, Weight range 6 installation control only- no requirement forecast, Standard climatic zones, Basic, Fuel system for SI engine with direct injection (FSI), Standard suspension, Preparation for trailer hitch, Special identification label (EU), Tire repair kit, Disk brakes- rear- 16-inch (ECE), Disk brakes- front- 16-inch (ECE), Standard wheel bolts, Without additional front underbody guard, Tool kit, First-aid kit with warning triangle and high-visibility vests, Installation parts for four-cylinder engine, Leather steering wheel in 3-spoke design with multifunction plus and steering wheel heating, Front-wheel drive, Initial standard fuel filling, Without locking and starting systems, Insert for the filling up of unleaded fuel, Audi drive select, Labels in English and German, Bumpers- advanced, Without additional tires, Model name as per new output designation, ISOFIX child seat mounting and top tether for the rear seats, Without roof insert (standard roof), Without luggage/load compartment floor, Without child seat anchora in front (ISOFIX), Without backrest release for front seats, Front seats- manually adjustable, Passenger car design, Rear seat system- 3-seater, Omission of roof rails, Without roll-up sunshade, Seat heating- front and rear, Emission standard EU6 AP, Without seat ventilation/massage seat, Luggage compartment lid- electrically opening and closing, Insulating glass windshield, Manual child safety lock, Convenience key without Safelock, Rear and side windows with heat-insulating glazing, Interior mirror- automatically dimming- frameless, Airbags- front, front passenger airbag can be deactivated, Side airbags- front and head airbag system, Gloss package, Luggage compartment trim (design 2), Without special body measures, Carrier frequency 433.92 MHz-434.42 Mhz, Without rear spoiler, Adhesive film, Without front spoiler, Inlays- diamond paint finish- Silver Gray, Exterior mirrors on the right- (large field of view)- convex, Left exterior mirror- aspherical, Sun visors- front, Variable head restraints for the front seats, Without fire extinguisher, Without additional side body covers (stone guard), Comfort center armrest- front, Exterior mirror housings in body color, Without decorative films/emblems, Roof in body color, Audi active lane assist, Body-colored door handles, Audi pre sense city, Headlining in cloth in specific color, Luggage compartment mat, Rear trim panel (ECE), Front license plate carrier, Exterior mirrors- electrically adjustable- heated and folding- automatically dimming on both sides, Top speed limited to 210 km/h, Electronic immobilizer, Without heat accumulator/auxiliary heater, Without preparation for VTS (vehicle tracking system), Without leather, Vehicle class differentiation -8WB/8WC/8WF-, Tire pressure loss indicator, Start-stop system, Door sill trims with aluminum inlays- front, Without wind deflector, MMI navigation plus with MMI touch, Audi pre sense rear and basic, Parking system plus, Side assist, Matrix LED headlights with dynamic turn signal, Matrix LED headlights with dynamic turn signal, Lumbar support- pneumatically adjustable with massage function for the front seats, Separate daytime running light, 8 loudspeakers, Audi adaptive cruise control, LED rear lights plus, Without headlamp washer system, Two-tone horn, Not hot country, 3-zone deluxe automatic air conditioning, Without integrated toll system, Belt-driven integrated starter alternator 12 V- 130 - 200 A, USB charging interfaces in the rear, Without neck heating, Without auxiliary heater/parking heater, Seat belt reminder, Audi virtual cockpit plus, Without additional warning lights, Without "Multimedia" in vehicle, Audi phone box, Equipment options subset for Denmark

PICTURES



Picture viewer: <https://fm.bilsalg.dk/business/picturebrowser?t=full&guid=fd7156c2-6bc8-45b2-80b9-317b9ac24ddd&carid=20152898>

OVERVIEW OF DAMAGES AND SHORTAGES

N°	LOCATION	TYPE	SEVERITY	INSURANCE	NOTES	DAMAGE GROUP
1	L. Rear Rim	Scratch	C4		Reporting needed	
						
2	R. Front Rim	Scratch	C4		Reporting needed	
						
3	Rear Bumper	Scratch	C4		Reporting done	
						
4	R. Rear Rim	Scratch	C4		Reporting needed	
						

Severity explanation:

C0 = No damage / C1 = Simple preparation / C2 = Minor preparation needed / C3 = Can be smart repaired / C4 = Repair/spray paint / C5 = Need replacement

ELECTRICAL AND MECHANICAL CONDITION

N°	LOCATION	TYPE	NOTES
1	Is the car drivable	Yes	