

**VEHICLE DESCRIPTION - Audi Q3 Attitude 1.5 35 TFSI**



**First registration date:**  
3/2023

**VIN:**  
WAUZZZF37P1096147

**Colour:**  
Black Metallic Normal gloss

**Mileage (km):**  
48.988

**Gear:**  
Automatic (7 Gears)

**Fuel type:**  
Gasoline

**Body type:**  
SUV

**Number of doors:**  
5

**Drive type:**  
FWD

**Model year:**  
2019-2025

**Engine power:**  
110 kW

**Number of seats:**  
5

**Engine size (cc):**  
1498

**Interior:**  
Dark grey Fabric

**VEHICLE DETAILS**

**Number of keys:**  
2

**Number of license plates:**  
2

**Registration certificate:**  
Part 1 & 2 present

**Service documentation:**  
No

**Inspection date:**  
27-03-2026

**Last service (year/month):**

**Mileage (km) at last service:**

**SUMMARY OF THE VEHICLE'S CONDITION**

**Is the car in a driveable condition:**  
Yes

**Legal tire tread (minimum 1.6 mm):**  
Yes

## WHEELS

TYPE	SEASON	BRAND	POSITION	RIM	SIZE	TREAD
Fitted	Winter tires		Rear Left	Alloy rim	17"	4 mm
Fitted	Winter tires		Front Right	Alloy rim	17"	4 mm
Fitted	Winter tires		Front Left	Alloy rim	17"	4 mm
Fitted	Winter tires		Rear Right	Alloy rim	17"	4 mm
Extra Wheel	Summer tires		Rear Left	Alloy rim	17"	4 mm
Extra Wheel	Summer tires		Front Right	Alloy rim	17"	4 mm
Extra Wheel	Summer tires		Front Left	Alloy rim	17"	4 mm
Extra Wheel	Summer tires		Rear Right	Alloy rim	17"	4 mm

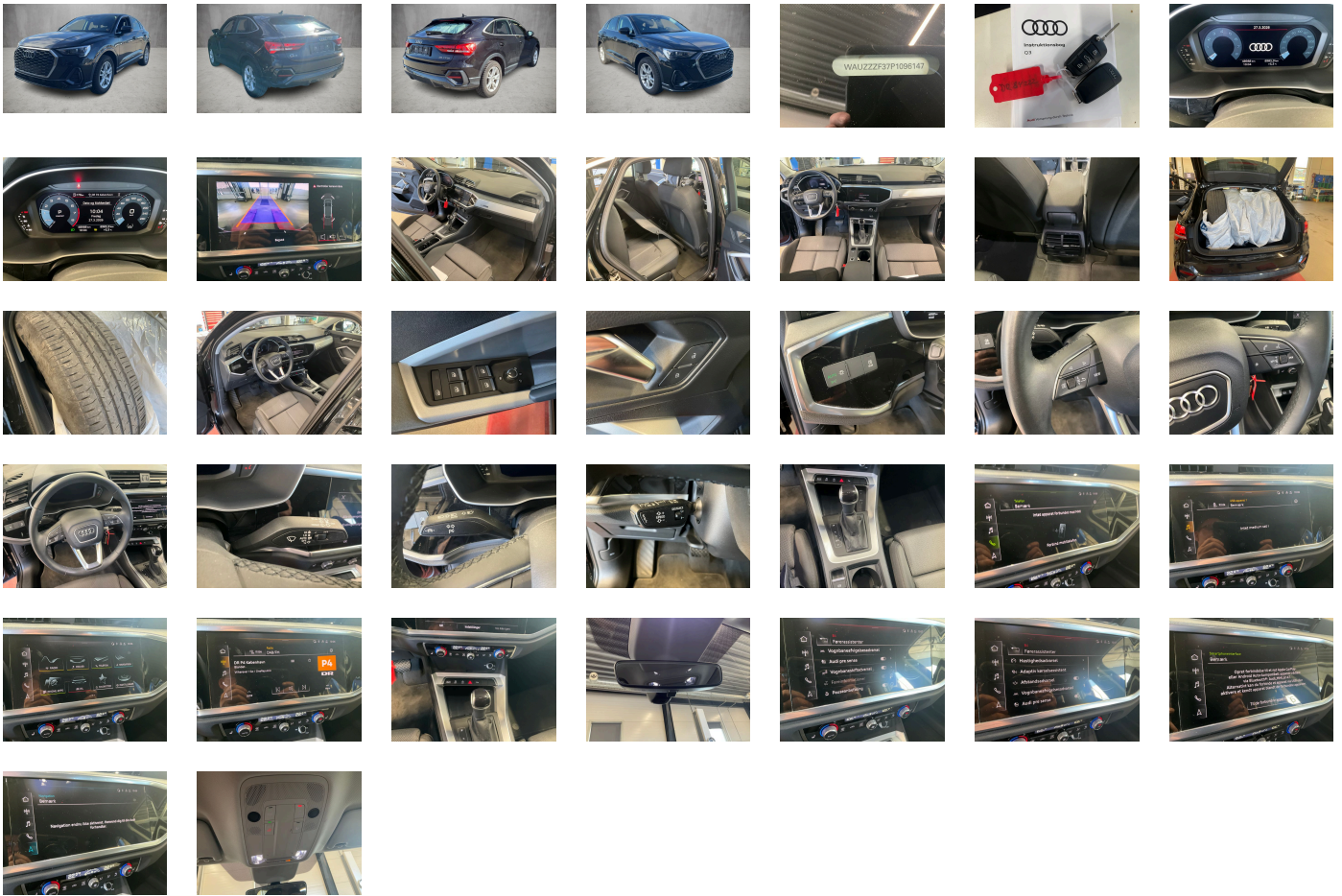
### Legal tire tread (minimum 1.6 mm):

Yes

## ACCESSORIES




Standard-production quality, Driving on the right, No self-collection, Audi AG, Basic exterior, Part set without country-specific prescriptive standard, Type approval country Denmark, Wheels- 5-twin-spoke- 7.0J x 17- 215/65 R17 tires, Operating permit- alteration, 4-cylinder SI engine 1.5 l/110 kW TSI base engine is TJ7/N09/T9F/T57/T0D, ECO function, Audi connect remote & control (for MMI navigation plus), Regional code " ECE " for radio, Without charging cable, No special edition, Control of series production, Basic equipment, Production wheels, N.N.N. Type 1, No special purpose vehicle- standard equipment, Without antenna amplifier, Without acoustic vehicle alerting system, Without sound measures for the vehicle interior (for Audi/Seat only), Vehicles without special upgrade measures, Accent surfaces- Gloss Black, Shock absorption in front, S tronic, Audi connect navigation & infotainment, SI engine, Top infotainment system High (MIB3), Battery 420 A (70 Ah), Tires 215/65 R17 99V super-low rolling resistance- generation 2, Reversing camera, Refrigerant R1234yf, Body style variant 1, Left-hand drive, Suspension range 17 installation control only- no requirement forecast, Without wall mount, Engine cover, Transit coating (type 1), Without control unit for charging system, Standard battery/alternator capacity, Statutory emergency call, 4-cylinder SI engine 1.5 l unit 05E.D, Fabric "Index", Assist package, Preparation for MMI navigation plus, Without Storage package, LongLife Service Regime, Speech dialog system, Service indicator 30 000 km or 2 years ( variable ), Interior in aluminum look, With multifunction camera, Rear window- rear door and side windows in clear glass, Interior lighting, Without dynamic road sign display, Digital Audio Broadcasting, Sport seats- front, Control of special edition prices, Hill hold assist, Electromechanical parking brake, Smartphone interface, Standard rear seat release, Instrument cluster- km/h speedometer, Without garage door opener, Standard pedal cluster, Extended and proactive pedestrian and cyclist protection, Tires without specification of tire brand, Equipment package for Denmark, Equipment package for Denmark, Internal control code, Internal control code, Internal control code, Front stabilizer bar, Rear stabilizer bar, Wheelbase, Standard manufacturing sequence, Installation differentiation for transmission DQ381 -- vehicle components --, Without alternative drive system, With special labels safety certificates for Denmark, Standard exhaust system, Without electronic steering column lock, Floor mats- front and rear, Manual in Danish, Weight range 3 installation control only- no requirement forecast, Standard climatic zones, Electronic Stabilization Control ESC, Fuel system for fuel-injected SI engine, Special identification label (EU), Activated carbon canister (Evaporative Emission Control System (EVAP)), Tire repair kit, Seat occupancy sensor, Sport suspension, Preparation for trailer hitch, Trims for alloy wheels, Progressive steering, Standard wheel bolts, Without additional front underbody guard, Tool kit, Vehicle class differentiation -F30/F3A-, First-aid kit with warning triangle, Without folding table on front seat backrest, Installation parts for four-cylinder engine, Leather steering wheel- 3-spoke with multifunction plus, Front-wheel drive, Disk brakes- front- 16-inch (ECE), Increase in initial standard fuel filling, Disc brakes in rear, Audi drive select, Bumpers- standard, Labels in English and German, Loading sill protector- plastic, Without additional tires, Model name as per new output designation, Without electric motor (hybrid), ISOFIX and top tether for outer rear seats, Without partition, Without roof insert (standard roof), Without child seat mounting- front (ISOFIX), Without backrest release for front seats, Front seats- manually adjustable, Without special measures, Omission of roof rails, Head restraints- rear (3), 3-point seat belts- outer rear with ECE label, Rear license plate carrier (ECE), Seat heating- front, Emission standard EU6 AP, Without seat ventilation/massage seat, Manual luggage compartment lid, Windshield with heat-reflecting glass and acoustic glass, Manual child safety lock, Remote control key- without Safelock, Interior mirror- dimming, Airbags- front, front passenger airbag can be deactivated, Side airbags- front and head airbag system, Gloss package, Without special body measures, Carrier frequency 433.92 MHz-434.42 Mhz, Rear spoiler, Rear seat bench plus with center armrest and cup holder, Adhesive film, Without front spoiler, Inlay- Micrometallic- Silver, Exterior mirrors on the right- (large field of view)- convex, Left exterior mirror- aspherical, Head restraints- front, Without fire extinguisher, Comfort center armrest- front, Exterior mirror housings in body color, Headlining in cloth in specific color, Side decorative films, Adaptive cruise assist with emergency assist, Audi pre sense front for adaptive cruise control, Exterior mirrors- electrically adjustable and heated, Speed limiter, Electronic immobilizer, Without socket, Without heat accumulator/auxiliary heater, Interior elements in Steel Gray, Tire pressure loss indicator, Start-stop system with recuperation, Door sill trims with plastic inlays, 4-way lumbar support for the front seats, Preparation for MMI navigation plus, Without extended safety system, Parking system plus, Side assist, Without charging cable (industrial connector), Without mode 3 charging cable, Headlights, Without second battery, Alternator 140 A, High beam assistant, Separate daytime running light, Light/rain sensor, Automatic-static headlight range control, 6 loudspeakers, Adaptive cruise control, Rear lights, Without front fog lamps, Washer fluid level indicator, Without headlamp washer system, Two-tone horn, Not hot country, 2-zone deluxe automatic air conditioning, Non-smoker version, Without auxiliary heater/parking heater, Audi virtual cockpit, Without logo projection, Without "Multimedia" in vehicle, Bluetooth interface, Operating voltage 12 V, Equipment options subset for Denmark

**PICTURES**



**Picture viewer:** <https://fm.bilsalg.dk/business/picturebrowser?t=full&guid=0e8f3b4b-8af6-4247-9a13-11ec8804ee69&carid=20063317>

**OVERVIEW OF DAMAGES AND SHORTAGES**

N°	LOCATION	TYPE	SEVERITY	INSURANCE	NOTES	DAMAGE GROUP
1	Front Windscreen	Stone Chips	C5		Reporting needed	
						

Severity explanation:

C0 = No damage / C1 = Simple preparation / C2 = Minor preparation needed / C3 = Can be smart repaired / C4 = Repair/spray paint / C5 = Need replacement

**ELECTRICAL AND MECHANICAL CONDITION**

N°	LOCATION	TYPE	NOTES
1	Is the car drivable	Yes	