

VEHICLE DESCRIPTION - Seat Ibiza Style 1.0 MPI



First registration date: 2/2023	VIN: VSSZZKJ1PR064897
Colour: Black Metallic Normal gloss	Mileage (km): 38.940
Gear: Manual (5 Gears)	Fuel type: Gasoline
Body type: Hatchback	Number of doors: 5
Drive type: FWD	Model year: 2021-2025
Engine power: 59 kW	Number of seats: 5
Engine size (cc): 999	Interior: Black Fabric

VEHICLE DETAILS

Number of keys: 2	Number of license plates: 2	Registration certificate: Part 1 & 2 present	Service documentation: Yes
Inspection date: 26-03-2026	Last service (year/month): 2025/2	Mileage (km) at last service: 25.508	

SUMMARY OF THE VEHICLE'S CONDITION

Is the car in a driveable condition: Yes	Legal tire tread (minimum 1.6 mm): Yes
--	--

WHEELS

 TYPE	SEASON	BRAND	POSITION	RIM	SIZE	TREAD
Fitted	Winter tires		Rear Left	Steel rim	15"	4 mm
Fitted	Winter tires		Front Right	Steel rim	15"	4 mm
Fitted	Winter tires		Front Left	Steel rim	15"	4 mm
Fitted	Winter tires		Rear Right	Steel rim	15"	4 mm
Extra Wheel	Summer tires		Rear Left	Alloy rim	15"	5 mm
Extra Wheel	Summer tires		Front Right	Alloy rim	15"	5 mm
Extra Wheel	Summer tires		Front Left	Alloy rim	15"	5 mm
Extra Wheel	Summer tires		Rear Right	Alloy rim	15"	5 mm

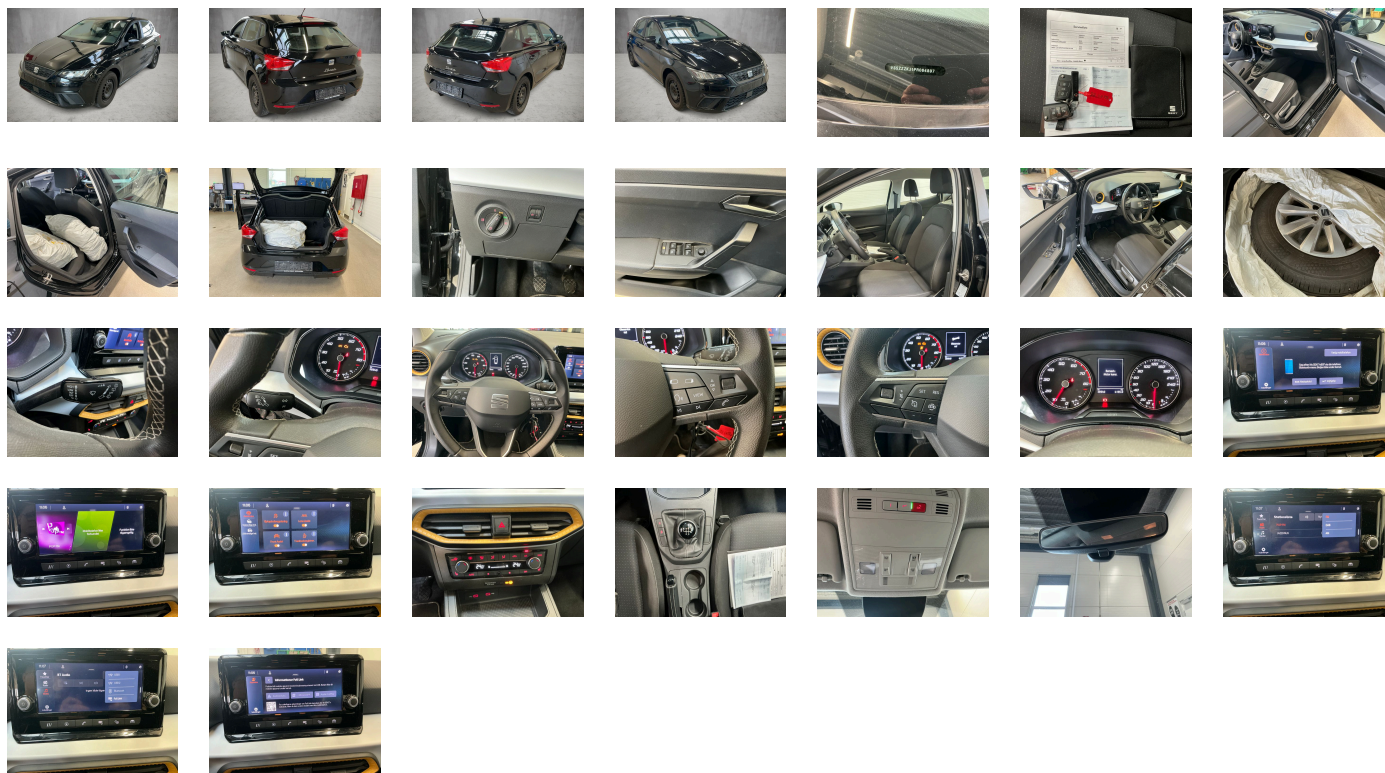
Legal tire tread (minimum 1.6 mm):

Yes

ACCESSORIES

Driving on the right, Standard version, In-plant control of self-collection, Luxury equipment, Part set without country-specific prescriptive standard, Type approval country Denmark, Operating permit- alteration, 3-cylinder gasoline engine 1.0 l/59 kW base engine: T5Y- "MPI", Without ECO function, Online service- with OCU- without head unit coding- without engine immobilizer interconnection, Driver alert system, Regional code " ECE " for radio, No special edition, Control of series production, Standard paint coating, Without customized installation, Variant, No special purpose vehicle- standard equipment, Vehicles with special upgrade measures, Without applications, 5-speed manual transmission "M5", Shock absorption in front, Entry-level infotainment system Radio 2 (MIB3) 8.25-inch, Battery 320 A (49 Ah), Tires 185/65 R15 88H super-low rolling resistance- generation 2, Without camera systems/accident sensors, Refrigerant R1234yf, Standard license plate lighting, Hatchback, Left-hand drive, Suspension range 03 installation control only- no requirement forecast, Private emergency call system, Seat trim covers in fabric, Analog instrument cluster, Comfort package (w/o power-folding exterior mirrors- w/o rain sensor), FULL LINK- USB and WLAN only, LongLife Service Regime, Without voice control, Service indicator 30 000 km or 2 years (variable), Chrome package, With multifunction camera, Without drawers under front seats, Without add. lights (interior lighting), Without dynamic road sign display, Digital radio reception, Standard seats in front, 3-cylinder SI engine 1.0 l unit 05C.1, Hill start assist, Instrument cluster- km/h speedometer, External- USB type C- only data socket(s), Standard pedal cluster, Extended and proactive pedestrian and cyclist protection, Tires without specification of tire brand, Front stabilizer bar, 4 doors, Wheelbase, Installation differentiation for transmission MQ 200 -- vehicle components --, Standard manufacturing sequence, Without alternative drive system, Nameplate set in basic style, Standard rear axle, Rear exhaust tailpipe (standard), Without floor mats, Without special color trim, Without information kit, Weight range 4 installation control only- no requirement forecast, Standard climatic zones, Rear overhang- short, Without special specifications, Electronic stability control (ESC), Fuel system for fuel-injected SI engine (tropicalized), Antifreeze up to -25 degree Celsius tolerance up to -30 degree C, Without trailer hitch, Special identification label for EC for M1 passenger vehicles, Activated carbon canister (Evaporative Emission Control System (EVAP)), Breakdown kit, Rear shock absorption, Drum brakes in rear, Standard air cleaner, Trims for alloy wheels, Power steering, Standard wheel bolts, Without additional front underbody guard, Tool kit, Vehicle class differentiation -6F0-, Without first aid kit and warning triangle, Front-wheel drive, Without differential lock, Disc brakes in front (Geomet D), Initial standard fuel filling, Without delivery equipment, Axial and vertical adjustable steering column, Leather-wrapped multi-function sports steering wheel, Without "drive select", Body-colored bumpers, Labels in Danish- Finish and Swedish, Standard design, Fresh air intake system with combinationfilter, Without additional tires, Type sign and company logo, Child seat anchors for child seat system ISOFIX, 3-point seat belt for center rear seat, Without roof insert (standard roof), Without luggage/load compartment floor, Without backrest release for front seats, Door and side trim panel, Manual height adjustment for front seats, Unsplit rear seat bench- split folding backrest, Without mounting fixture in luggage compartment, 3-point seat belts in front- with belt clamping device- without height adjustment, Three rear head restraints, Without roof rails/roof load rack, Luggage compartment cover- folding, Without additional noise suppression measures for passenger compartment, 3-point seat belts- outer rear with ECE label, Seat heater for front seats separately controlled, Emission standard EU6 AP, Protective side molding, Heat-reflecting windshield, Central locking w/ radio remote control-interior controls- without SAFELOCK, Side and rear windows in heat-insulatingglass, Breakaway interior rearview mirror- dimming, Standard dashboard, Rear floor panel module- type 1, Power windows with comfort operation andcircuit breaker, Airbag on driver and front passenger side- without knee airbag- with front passenger airbag deactivation, Without luggage nets/pockets on backrests, Side airbag in front with curtain airbag, Standard decorative trims, Alloy wheels 5.5J x 15, Luggage compartment trim (design 1), Without special body measures, Carrier frequency 433.92 MHz-434.42 Mhz, Without rear spoiler, Transport protection film (minimum protection) with additional transport protection measures, Decorative inserts, Right exterior mirror- convex, Left exterior mirror- convex, Sun visors with mirror- airbag label on front passenger sun visor, Front head restraints, Without fire extinguisher, Without additional side body covers (stone guard), Without center armrest in front, Exterior mirror housings and various add-on parts in body color, Without decorative films/emblems, Lane keeping system, Forward collision warning incl. autonomous emergency braking- without adaptive cruise control, Vent, Unsplit molded headliner, Hand brake lever handle in leather, Gearshift knob/handle in leather, Without interior light in footwell, Exterior mirrors- power-adjustable/ heated, Electronic immobilizer, Without CD changer/CD player, Without heat accumulator/auxiliary heater, Tire pressure monitoring system, Start-stop system with regenerative braking, Without lumbar support in seat backrests, Without CD/DVD for navigation, Without navigation device, Without extended safety system, Without park distance control, Without lane change assist, Without second battery, Alternator 140 A, Without light control, LED headlamps, Separate daytime running light with automatic headlight control and manual Coming and Leaving Home feature, Rear window wiper and washer system with intermittent control, Windshield wiper intermittent control with light sensor, 2 reading lights in front, Headlight range control, 6 speakers (passive), Rear combination lamp- standard design, Rear fog lamp, Cruise control system and speed limiter, Without front fog lamps, Without washer fluid level indicator, Without headlamp washer system, Single-tone horn, Antenna for AM/FM reception, Not hot country, Climatronic with impact pressure control- CFC-free, Non-smoker's package, Without auxiliary heater/parking heater, Visual and acoustic seat belt reminder- electric contact in front and rear, Multi-function display/trip computer "Medium", Without heated washer nozzles, MirrorLink, Mobile phone interface, Equipment options subset for Denmark

PICTURES



Picture viewer: <https://fm.bilsalg.dk/business/picturebrowser?t=full&guid=c13e692e-fde4-4654-9923-b4676fefdb79&carid=20025352>

OVERVIEW OF DAMAGES AND SHORTAGES

No damages or shortages

ELECTRICAL AND MECHANICAL CONDITION

N° LOCATION	TYPE	NOTES
1	Is the car drivable	Yes